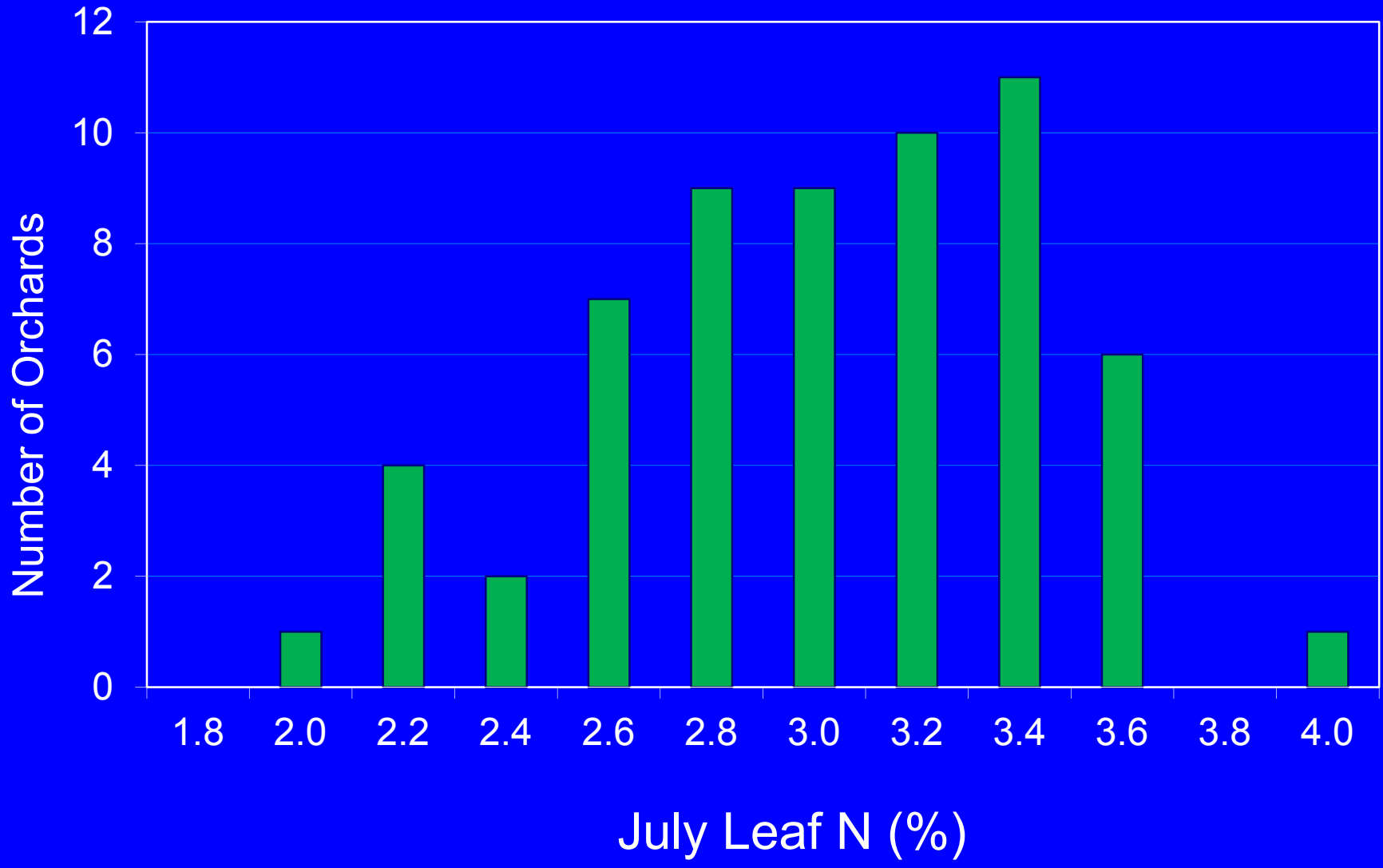


Nutrient Elements in Stone Fruit

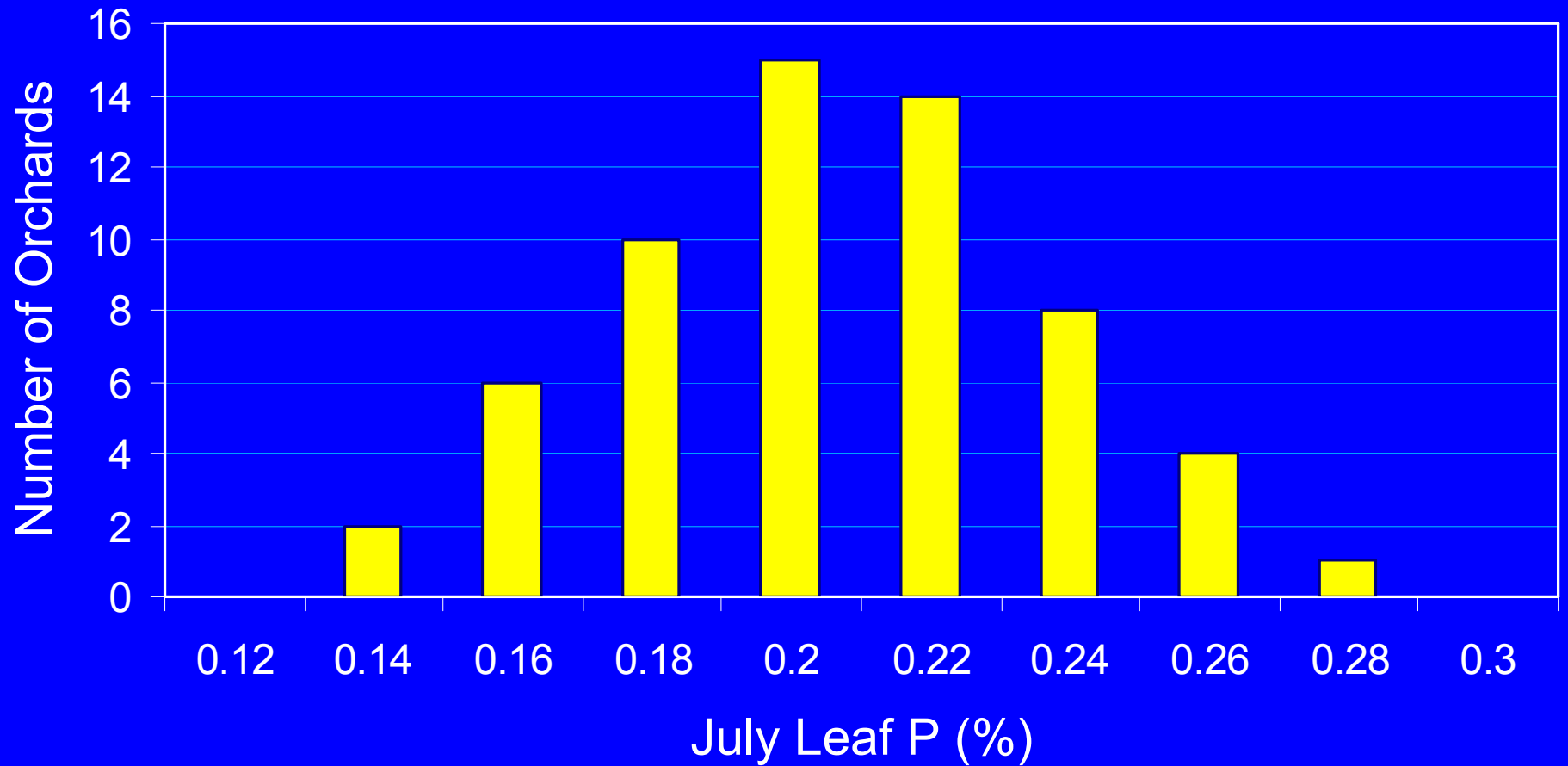
Level in leaves

	PEACHES AND NECTARINES			PLUMS		
	Deficient below	Optimum range	Toxic over	Deficient below	Optimum range	Toxic over
	%	%	%	%	%	%
N	2.3	2.6 - 3.0	-	-	2.3 - 2.8	-
P	-	0.1 - 0.3	-	-	0.1 - 0.3	-
K	1.0	Over 1.2	-	1.0	Over 1.1	-
Ca	-	Over 1.0	-	-	Over 1.0	-
Mg	0.25	Over 0.25	-	0.25	Over 0.25	-
Cl	-	-	0.3	-	-	0.3
S	-	-	-	-	-	-
	p p m					
Fe	60	Over 60	-	-	-	-
Mn	20	Over 20	-	20	Over 20	-
Zn	15	Over 20	-	18	Over 18	-
B	18	20 - 80	100	25	30 - 60	80
Cu	-	Over 4	-	4	Over 4	-
Mo	-	-	-	-	-	-

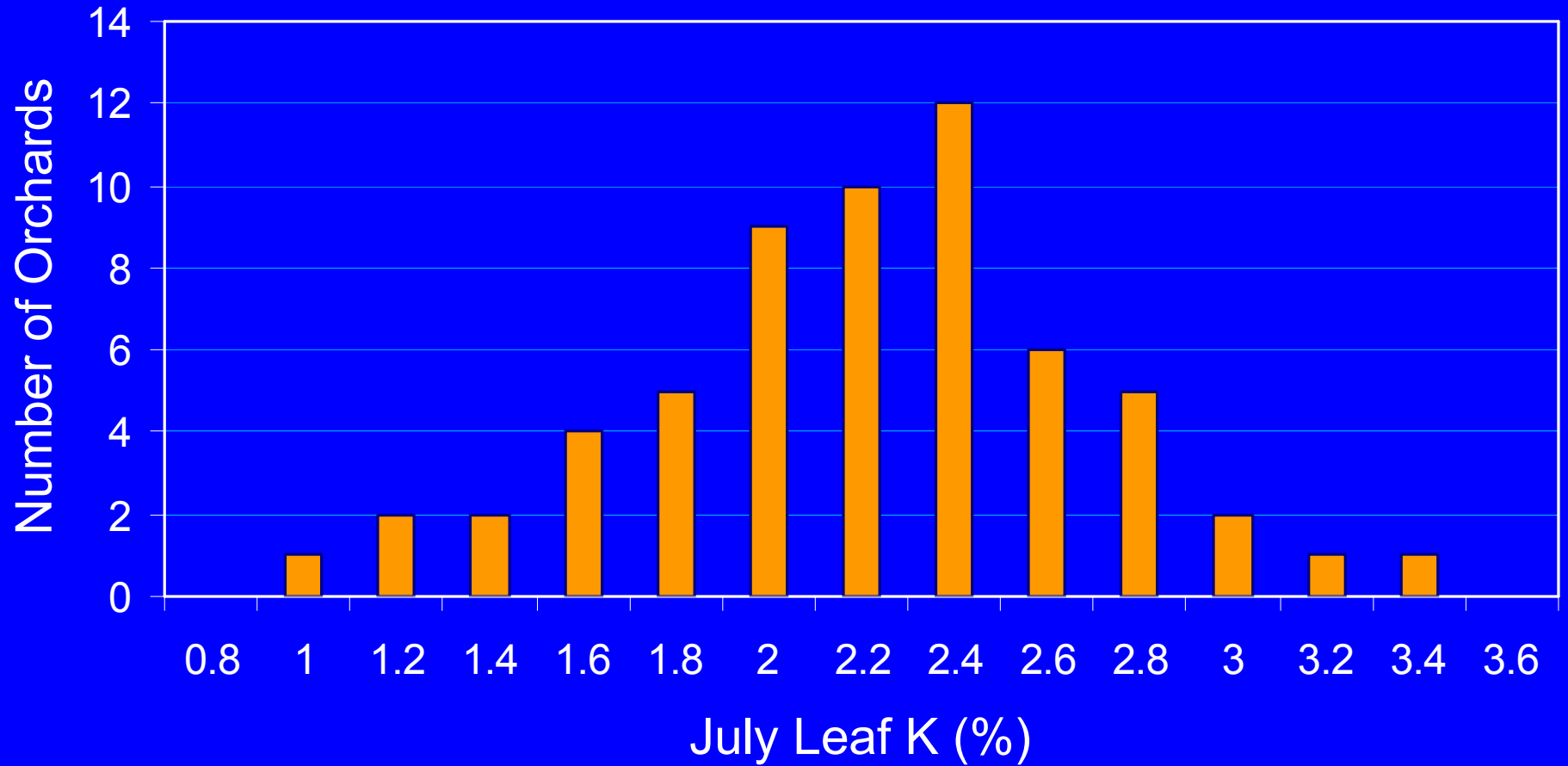
Orchard Survey - Nitrogen



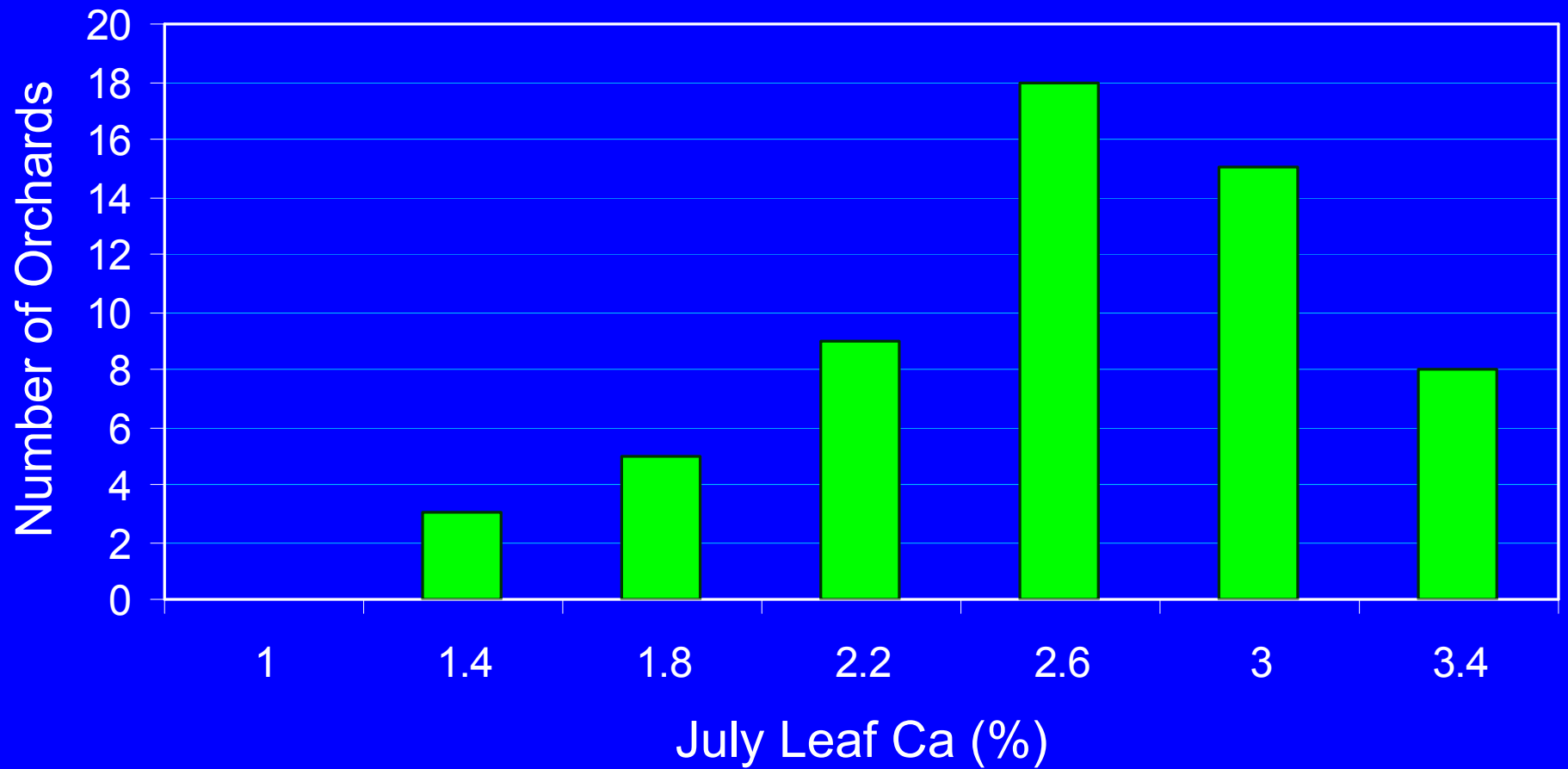
Orchard Survey - Phosphorus



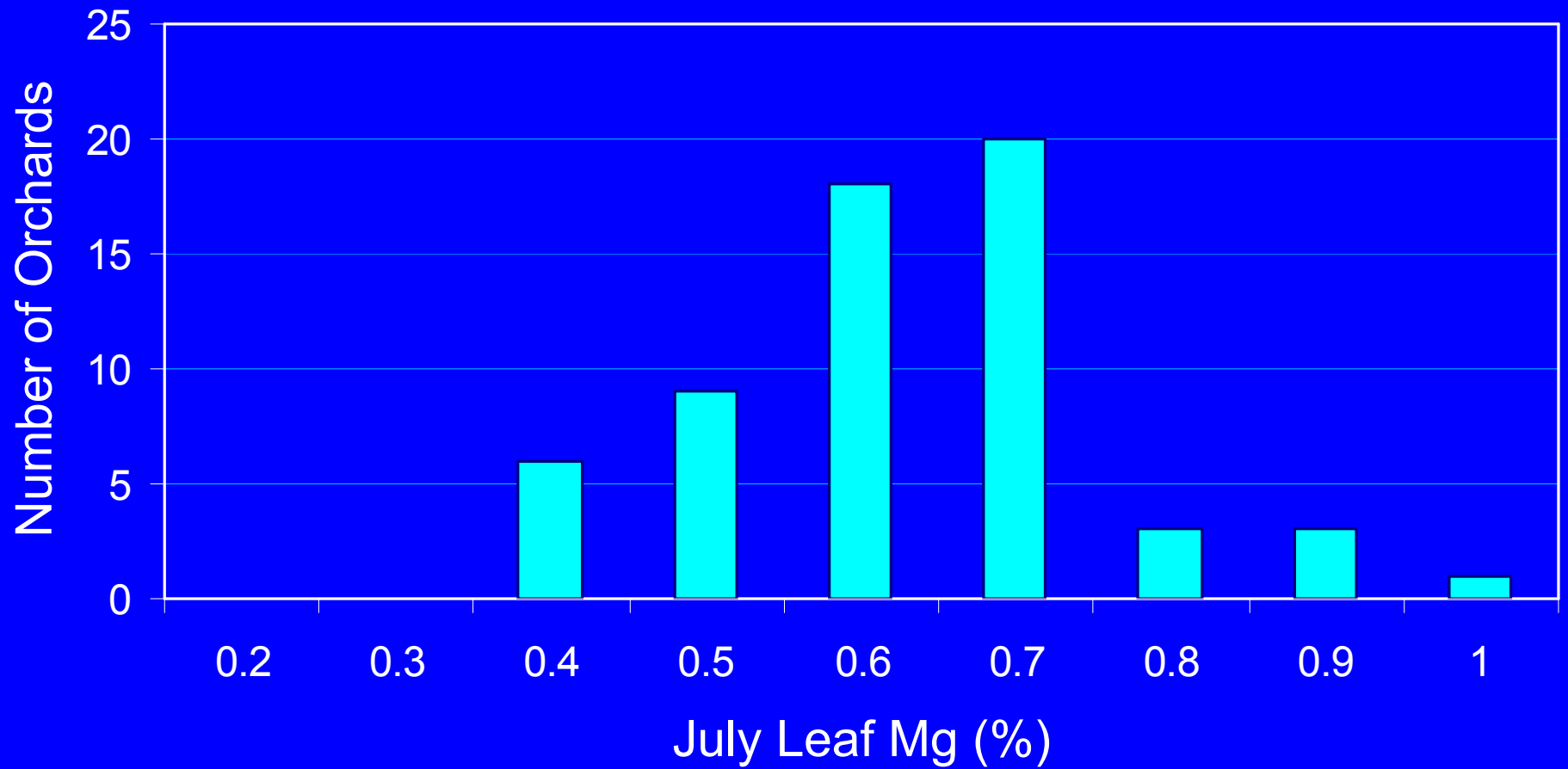
Orchard Survey - Potassium



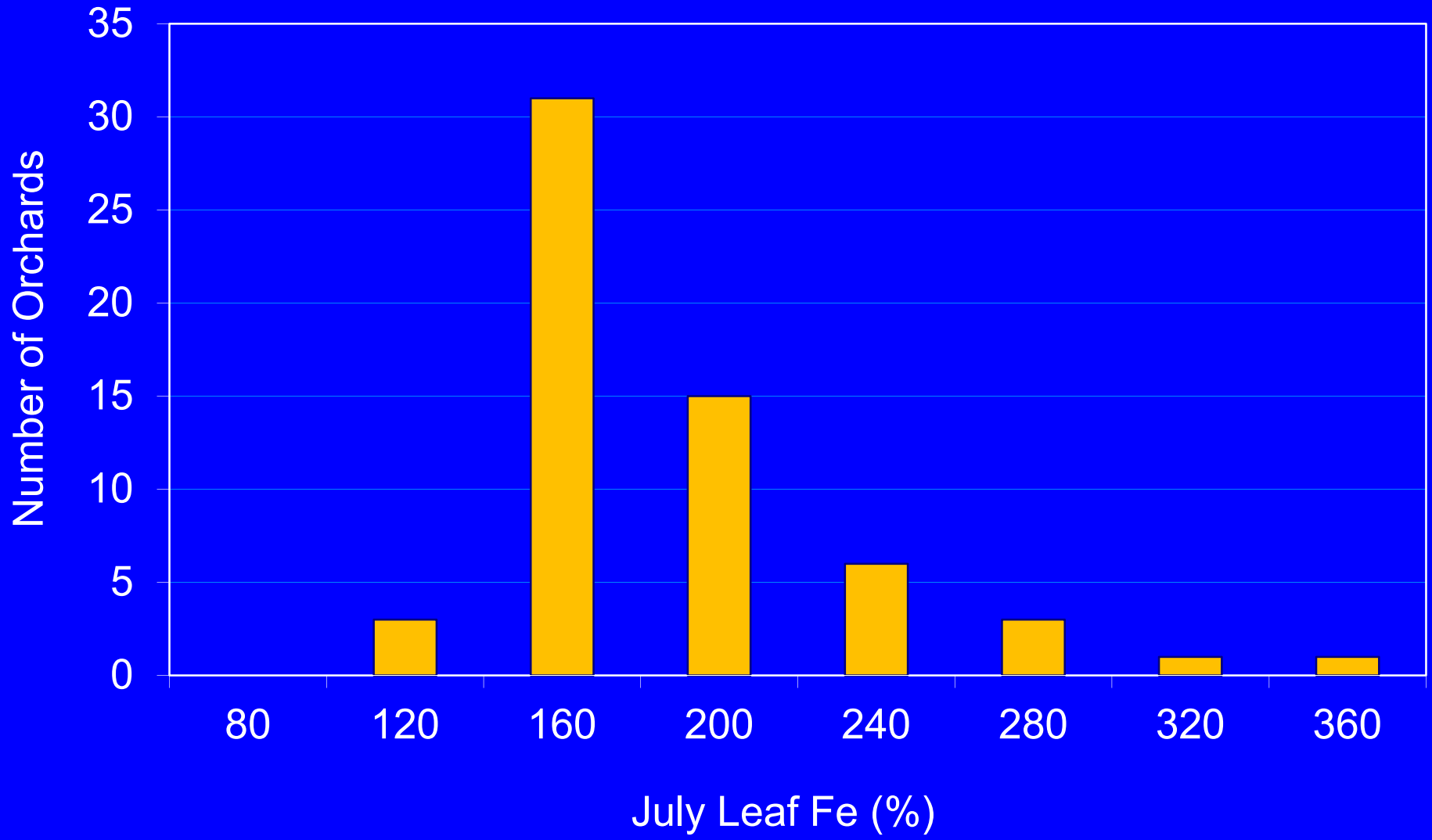
Orchard Survey - Calcium



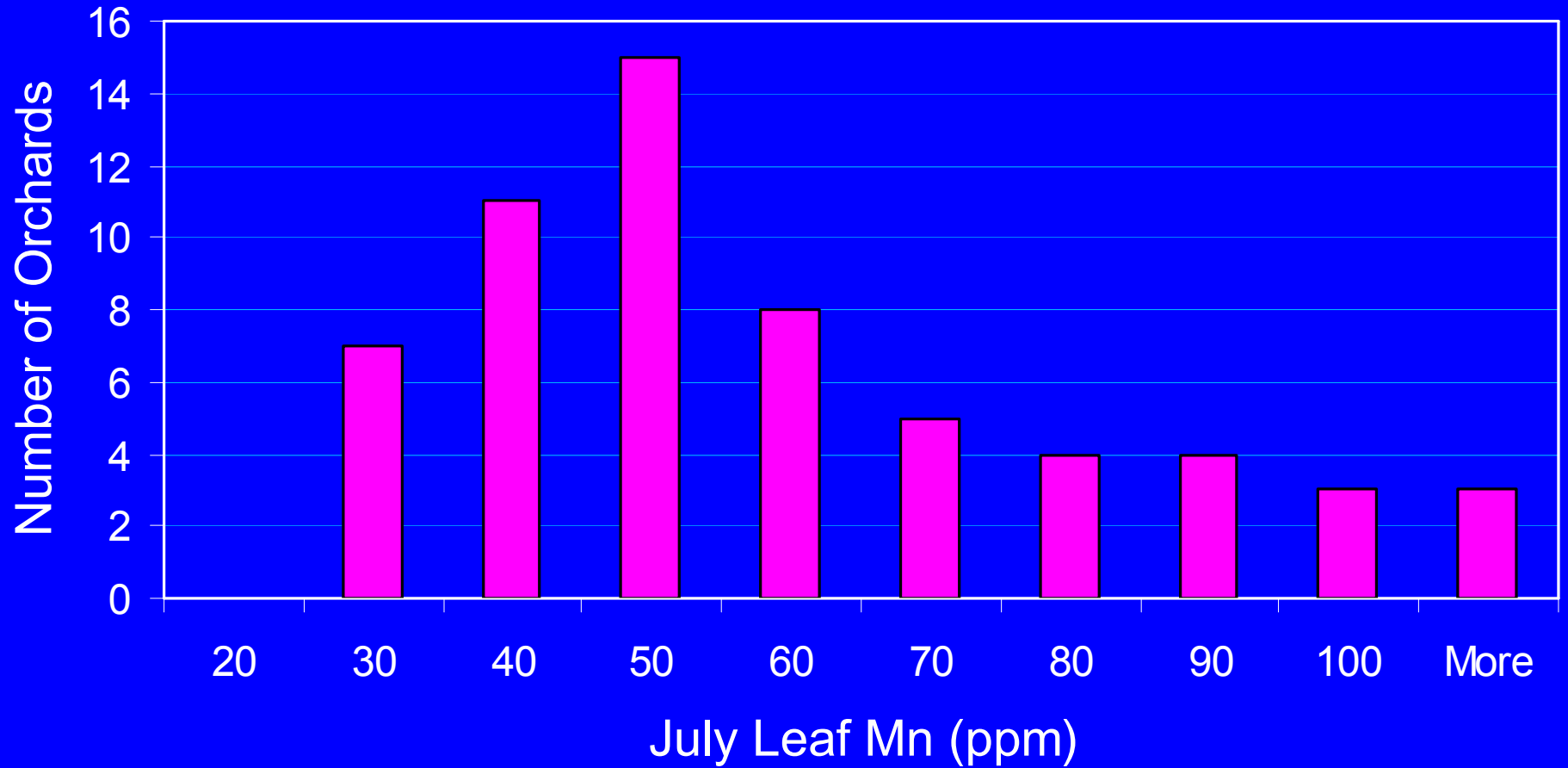
Orchard Survey - Magnesium



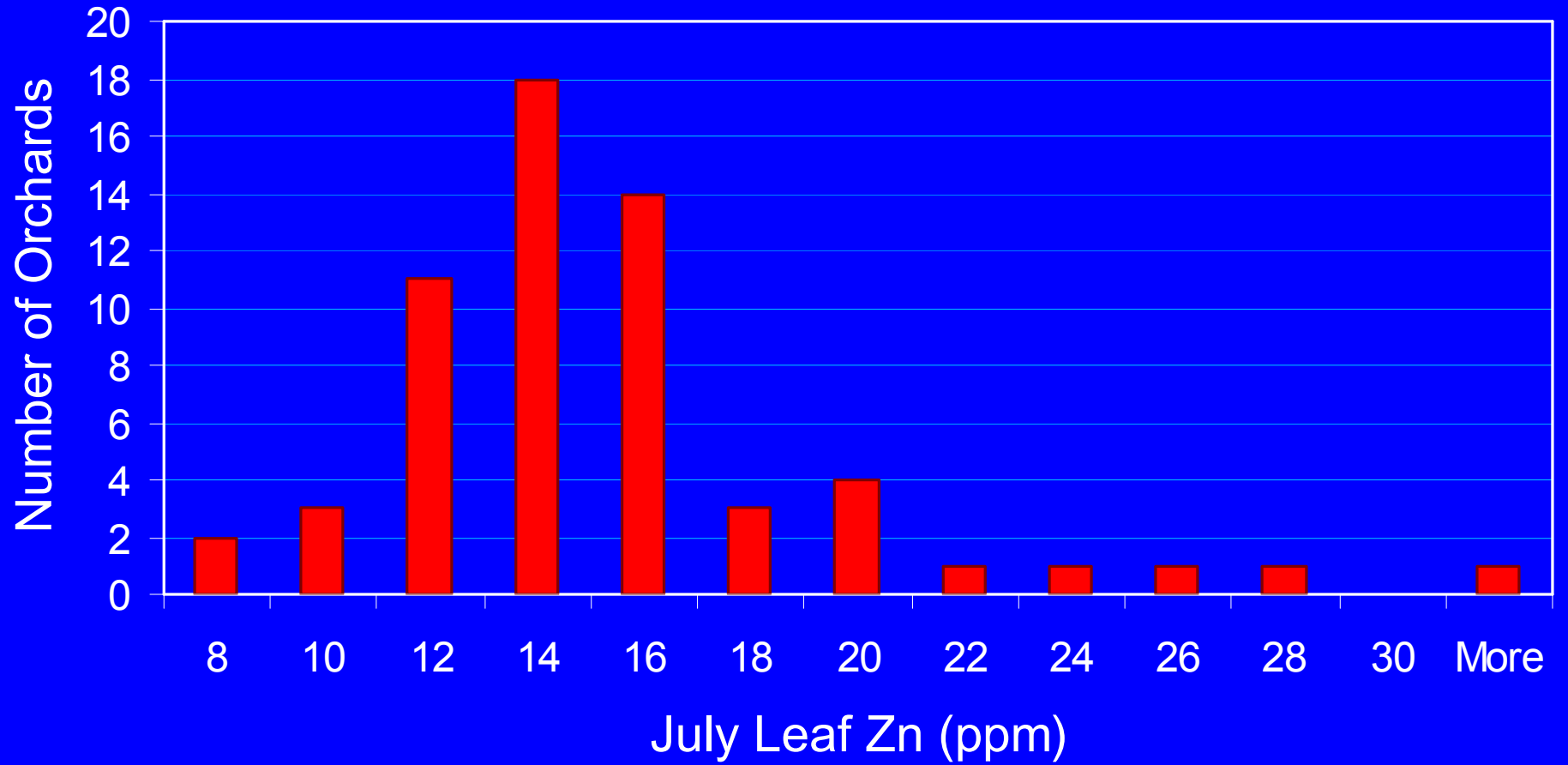
Orchard Survey - Iron



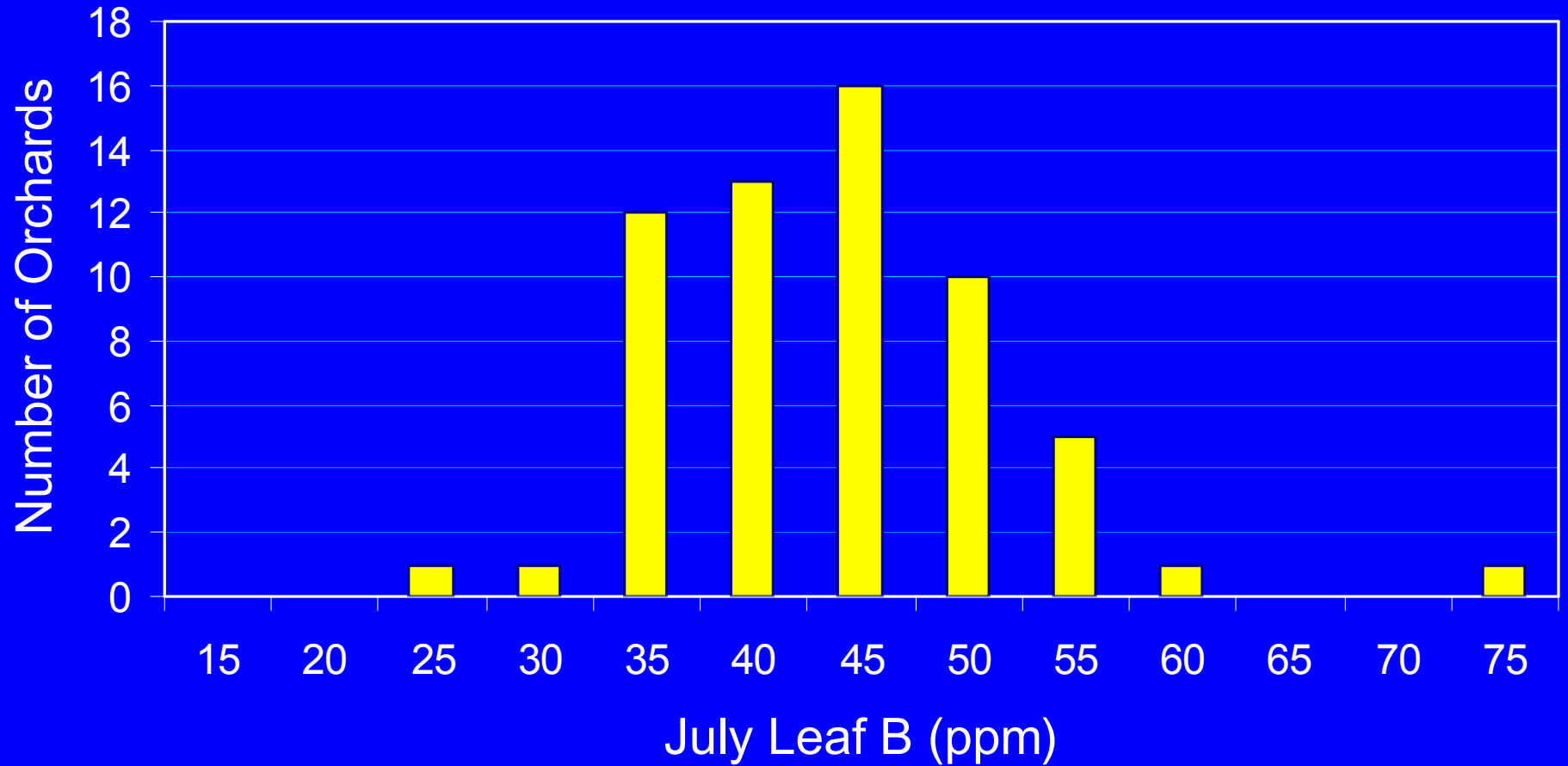
Orchard Survey - Manganese



Orchard Survey - Zinc



Orchard Survey - Boron



Orchard Survey - Copper

