

## **Appendix A: Inventory of Identified County Land for Food Production**

### **Table of Contents**

Potential Community Garden Sites.....	A-1
Potential Small-Scale Farm Operation Sites .....	A-13
Potential Grazing Sites .....	A-19

# Potential Community Garden Sites

## District 1

### Sonoma County Regional Parks

Maxwell Farms

<u>APN</u>	<u>Acres</u>	<u>Zoning</u>	<u>Combining District</u>
127-141-027	0.68	PF	BR F2 VOH
127-141-028	0.34	PF	None
127-141-017	10	PF	BR F2 VOH
127-141-015	35	PF	BR F2 VOH
127-141-014	35	PF	BR SD SR VOH

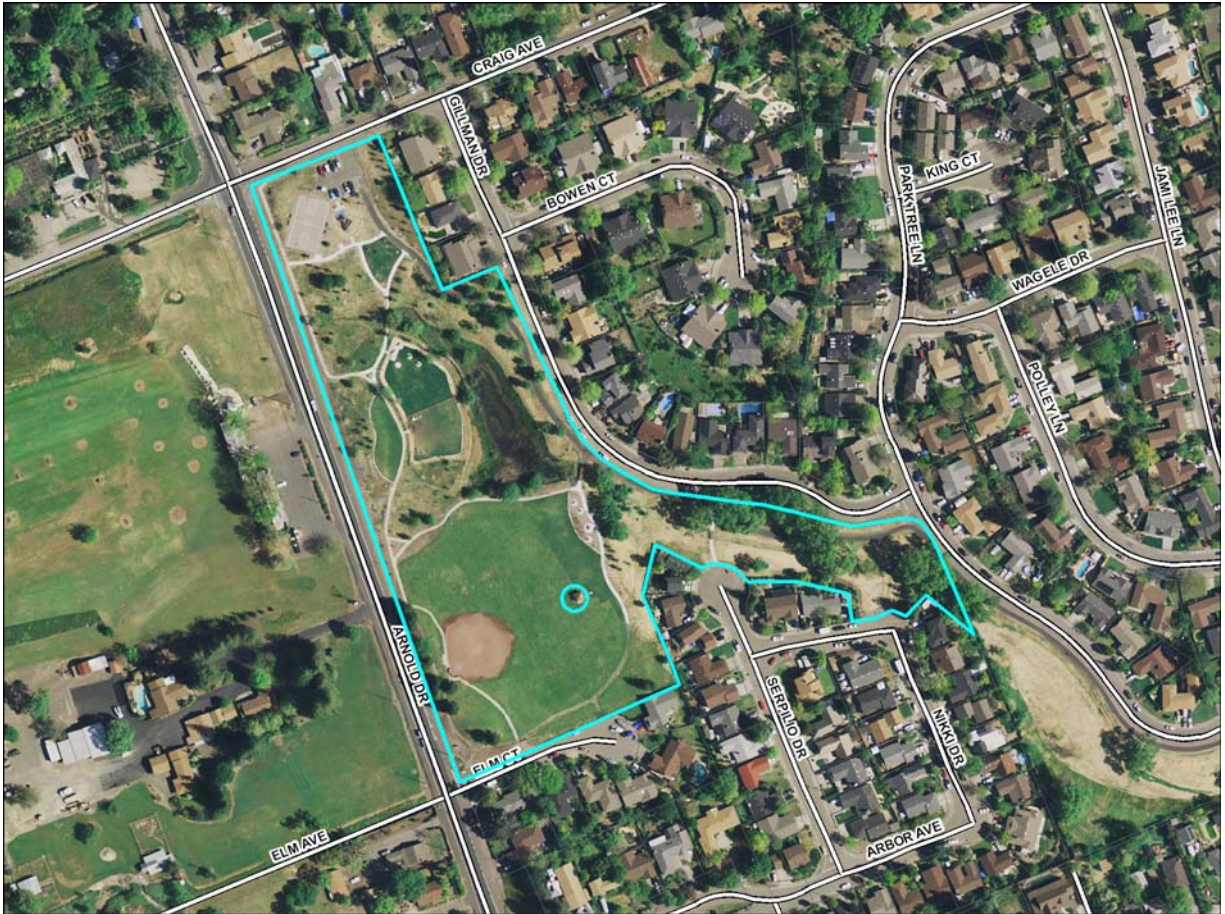


# District 1

## Sonoma County Regional Parks

Ernie Smith

<u>APN</u>	<u>Acres</u>	<u>Zoning</u>	<u>Combining District</u>
052-261-024	9.88	PF	SR

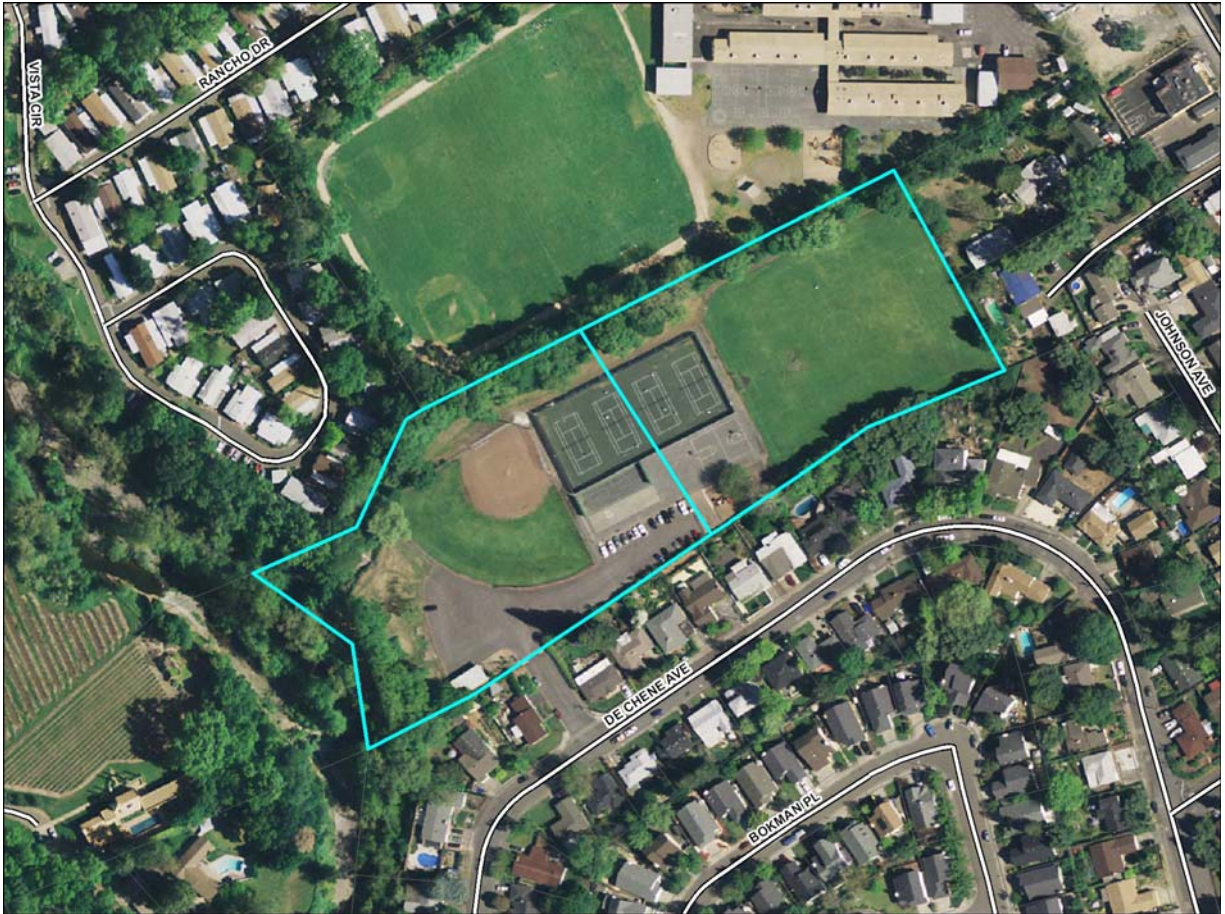


## District 1

### Sonoma County Regional Parks

Larson

<u>APN</u>	<u>Acres</u>	<u>Zoning</u>	<u>Combining District</u>
056-201-059	3.27	PF	VOH
056-201-021	4.0	PF	BR F2 VOH

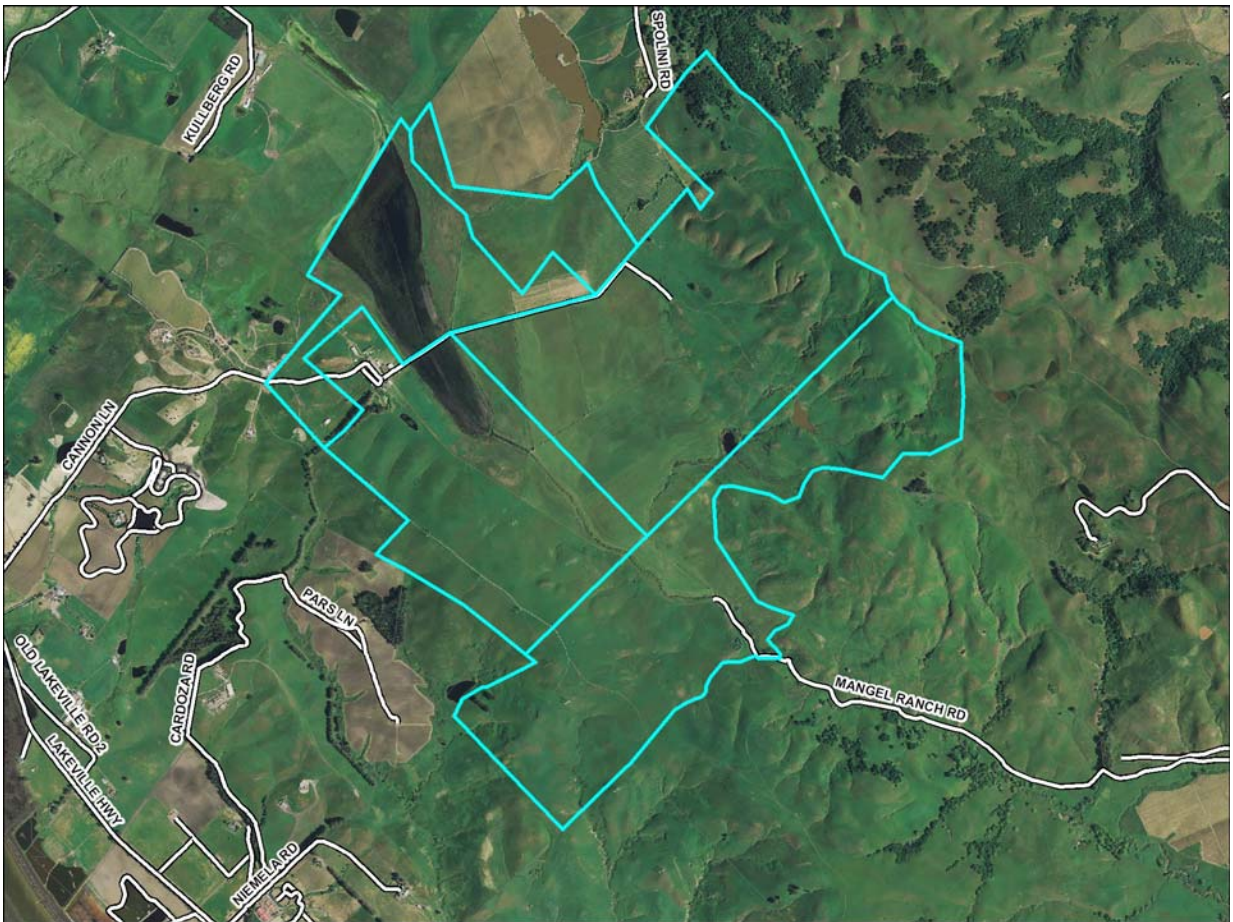


## District 1

### Sonoma County Regional Parks

Tolay Ranch

<u>APN</u>	<u>Acres</u>	<u>Zoning</u>	<u>Combining District</u>
068-060-058	100	LEA B6 60	VOH
068-060-057	217.62	LEA B6 60, LIA B6 60	SR VOH
068-070-004	355.83	LEA B6 60, LIA B6 60	SR VOH
068-080-001	500	LEA B6 60, LIA B6 60	G SR VOH
068-070-005	573.92	LEA B6 60, LIA B6 60	G VOH



## District 2

### County of Sonoma

#### Stony Point Petaluma Frontage

<u>APN</u>	<u>Acres</u>	<u>Zoning</u>
007-422-041	0.6	C2 - Commercial 2 (City of Petaluma)

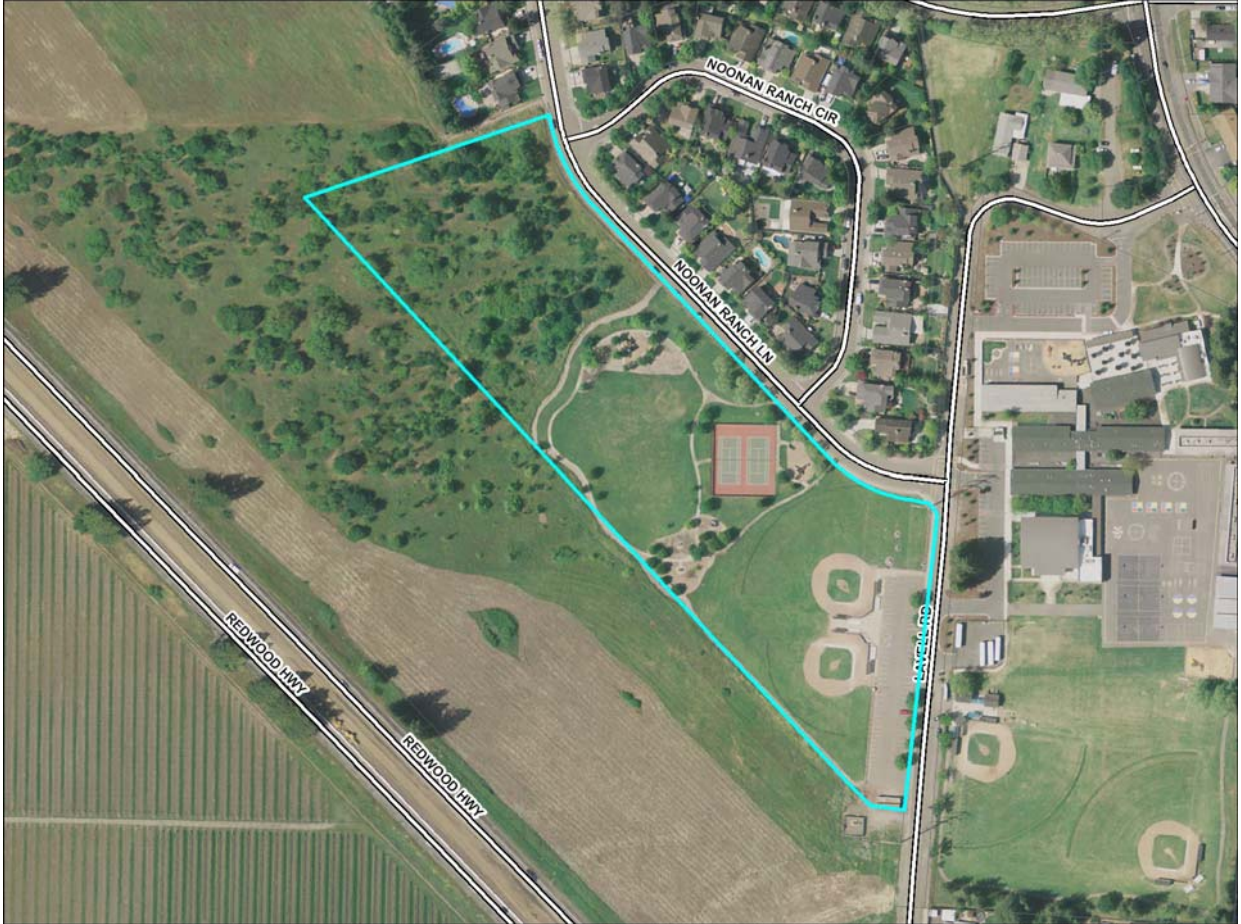


## District 4

### Sonoma County Regional Parks

Maddux Ranch

<u>APN</u>	<u>Acres</u>	<u>Zoning</u>	<u>Combining District</u>
058-090-019	10	PF B7	SD VOH



## District 4

### *Sonoma County Regional Parks*

Tom Schopflin

<u>APN</u>	<u>Acres</u>	<u>Zoning</u>	<u>Combining District</u>
058-050-051	21	LIA B6 20, PF	SR VOH

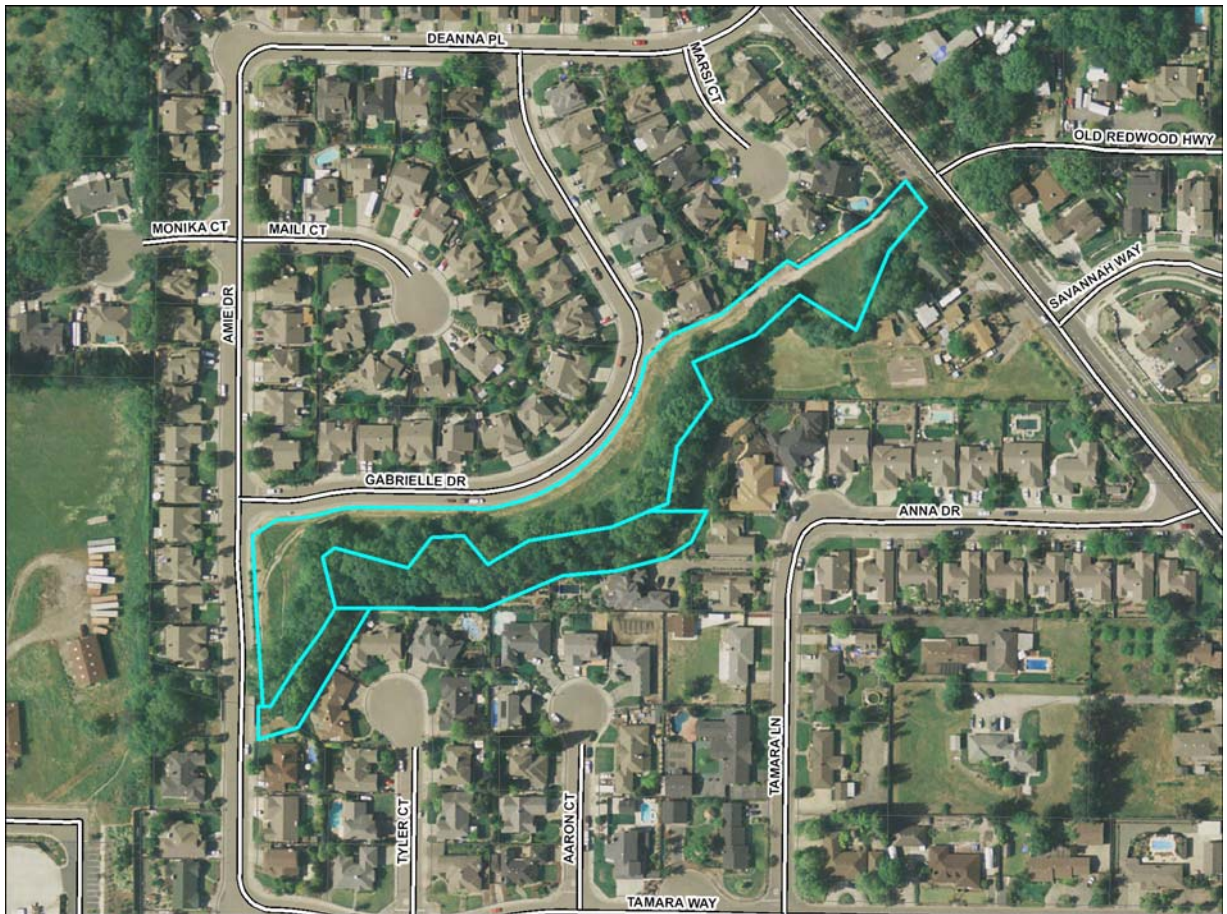


## District 4

### *Sonoma County Water Agency*

Faught Creek Channel near Amie Dr and Gabrielle Dr

<u>APN</u>	<u>Acres</u>	<u>Zoning</u>
163-171-009	2.5	OS Open Space (Town of Windsor)
163-150-042	1.12	SR Surrounding Residential (Town of Windsor)
163-150-038	0.27	SR Surrounding Residential (Town of Windsor)

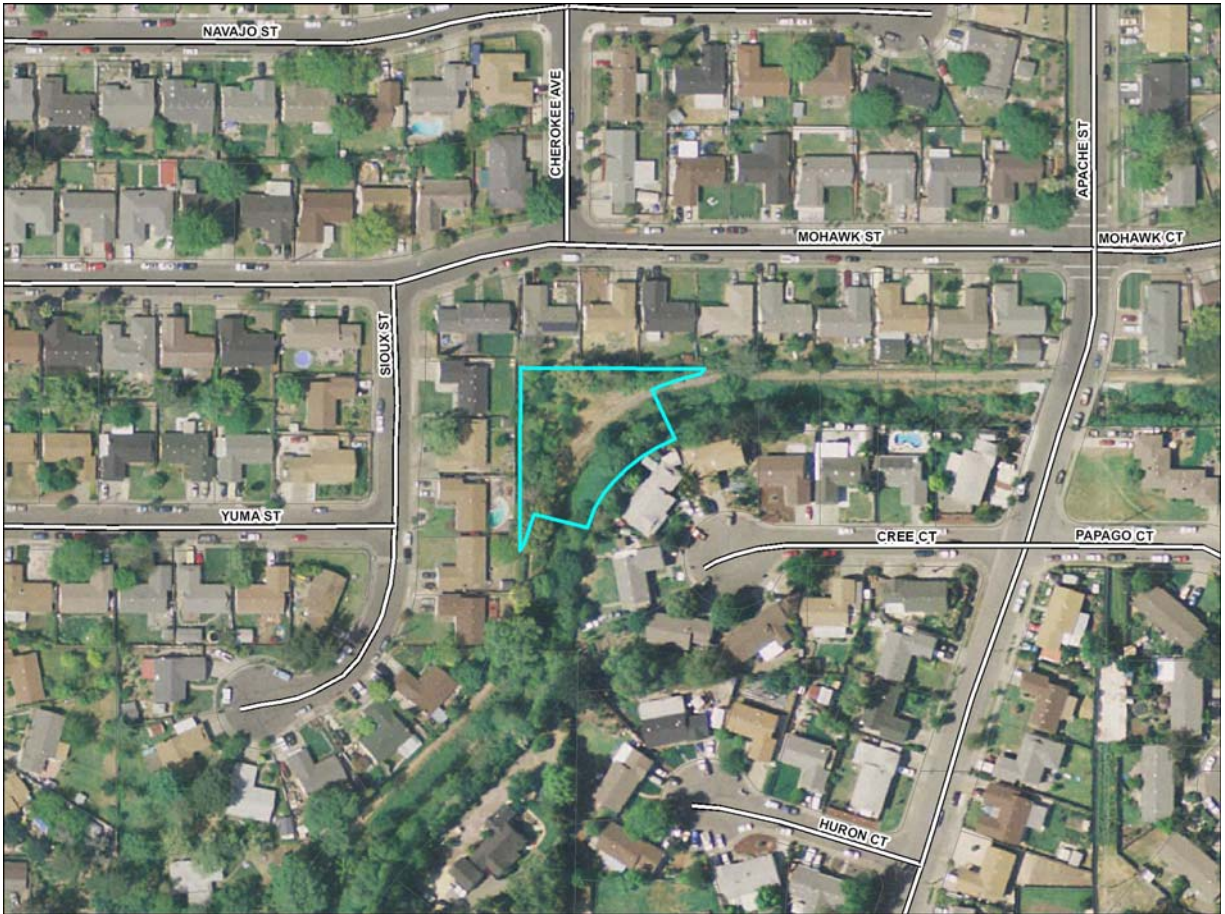


## District 4

### *Sonoma County Water Agency*

Remnant on Paulin Creek Channel near Creek Court

<u>APN</u>	<u>Acres</u>	<u>Zoning</u>
015-533-079	0.41	R-1-6 Single Family Residential (City of Santa Rosa)



## District 4

### County of Sonoma

Old Redwood Hwy & Lakewood

<u>APN</u>	<u>Acres</u>	<u>Zoning</u>
164-040-002	0.06	VR- Village Residential 5-8 dwelling unit/ac



## District 4

### *County of Sonoma*

Vineyards, Open Space, & Residential

<u>APN</u>	<u>Acres</u>	<u>Zoning</u>
163-012-019	0.07	SR- Surrounding Residential 3-6 dwell un/ac



## District 5

### *Sonoma County Regional Parks*

Ragle Ranch

<u>APN</u>	<u>Acres</u>	<u>Zoning</u>	<u>Combining District</u>
077-170-001	155.58	PF	BR F2 VOH



# Potential Farm Operation Sites

## District 1

### *Sonoma County Regional Parks*

Alder Park

<u>APN</u>	<u>Acres</u>	<u>Zoning</u>	<u>Combining District</u>
Unknown	3	Unknown	Unknown



## District 2

**Sonoma County Water Agency**  
Old Sonoma-Marin Drive-In Site

<u>APN</u>	<u>Acres</u>	<u>Zoning</u>	<u>Combining District</u>
019-280-012	16.53	LEA B6 160, LEA B6 60BR F2 SR	VOH



### District 3

#### *Sonoma County Water Agency*

Upper end of Todd Creek Channel near East Robles Ave

<u>APN</u>	<u>Acres</u>	<u>Zoning</u>	<u>Combining District</u>
044-101-063	4.25	R2 B6 10 DU, RR B8	VOH

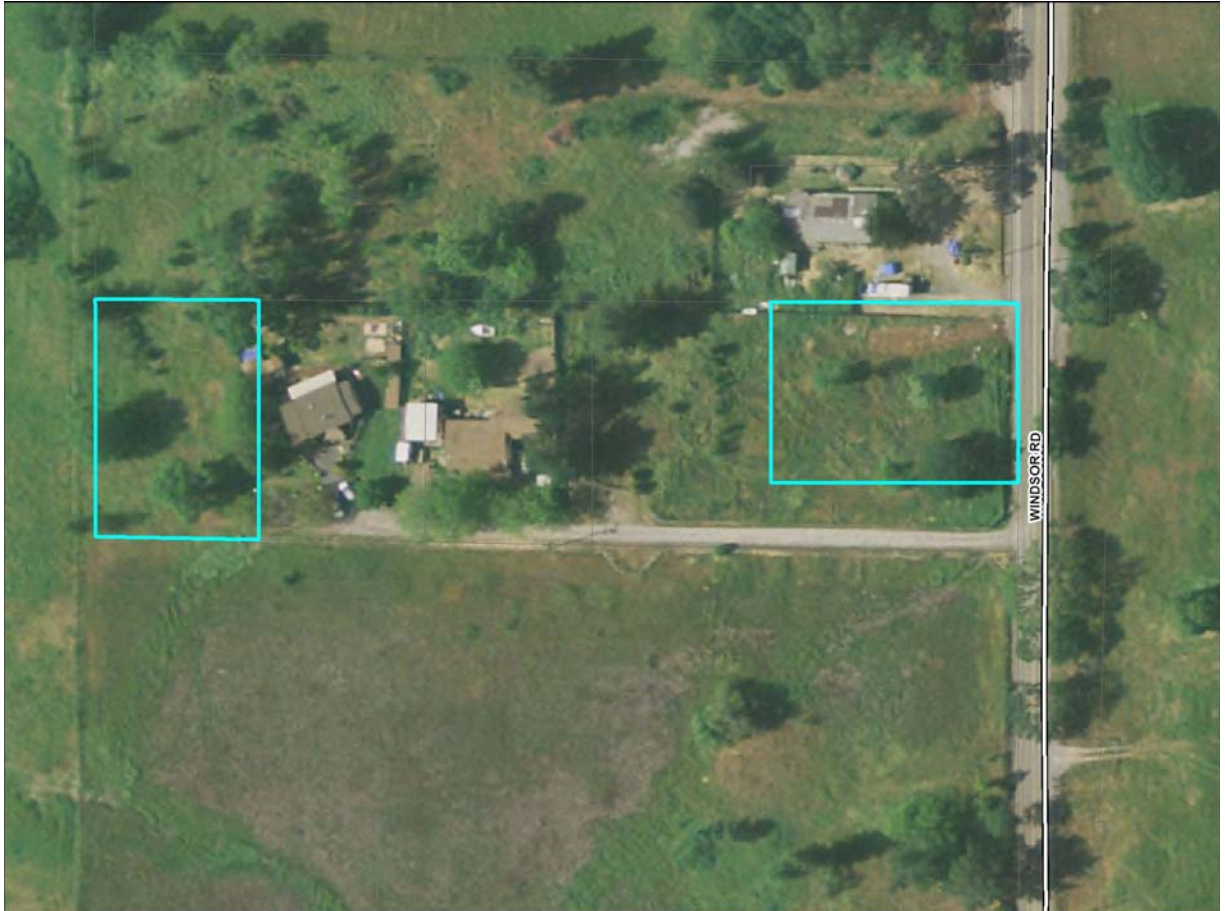


## District 4

### County of Sonoma

Windsor Small Lot 1&2

<u>APN</u>	<u>Acres</u>	<u>Zoning</u>	<u>Combining District</u>
066-250-019	0.42	DA B6 40	VOH
066-250-016	0.42	DA B6 40	VOH

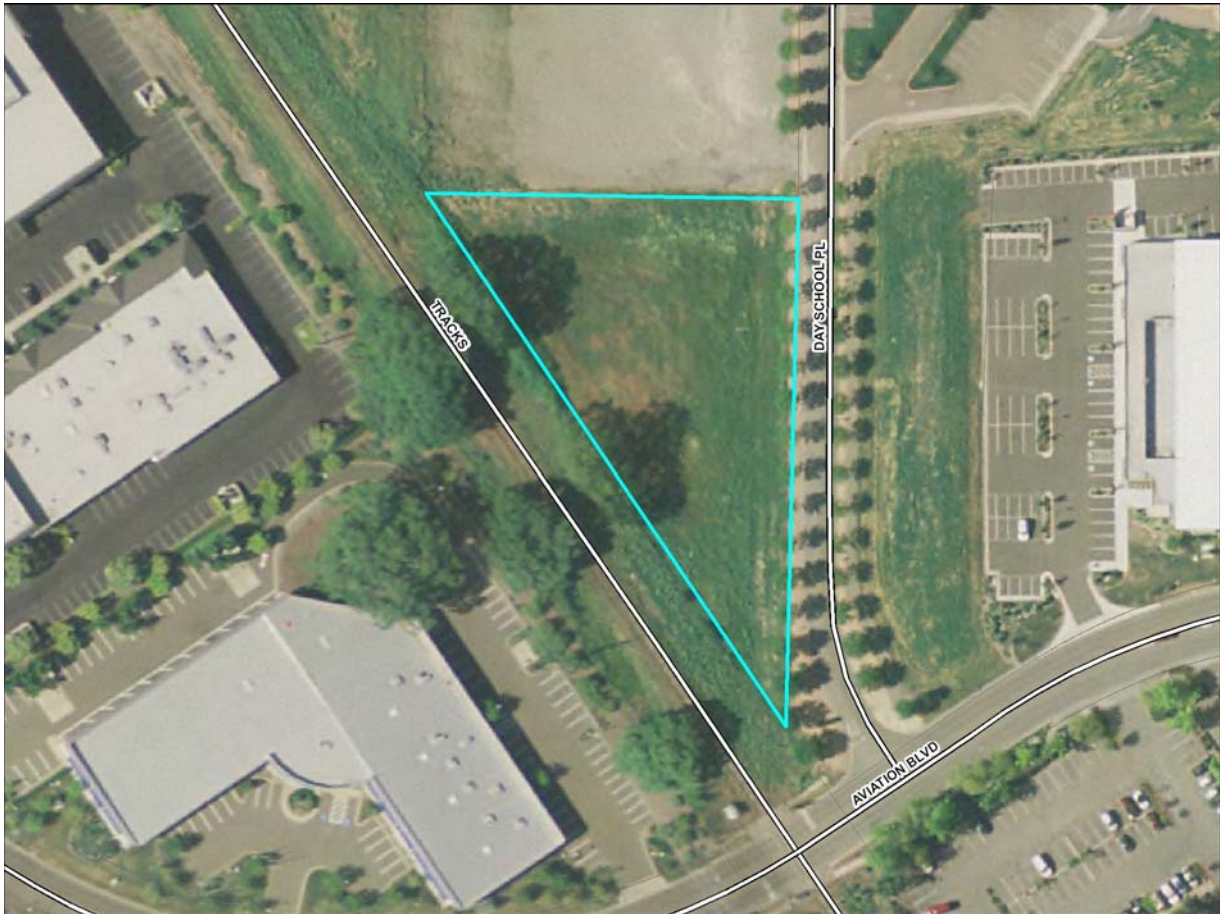


## District 4

**County of Sonoma**

Aviation Blvd Lot

<u>APN</u>	<u>Acres</u>	<u>Zoning</u>
059-271-062	1.06	LI - Light Industrial (City of Windsor)

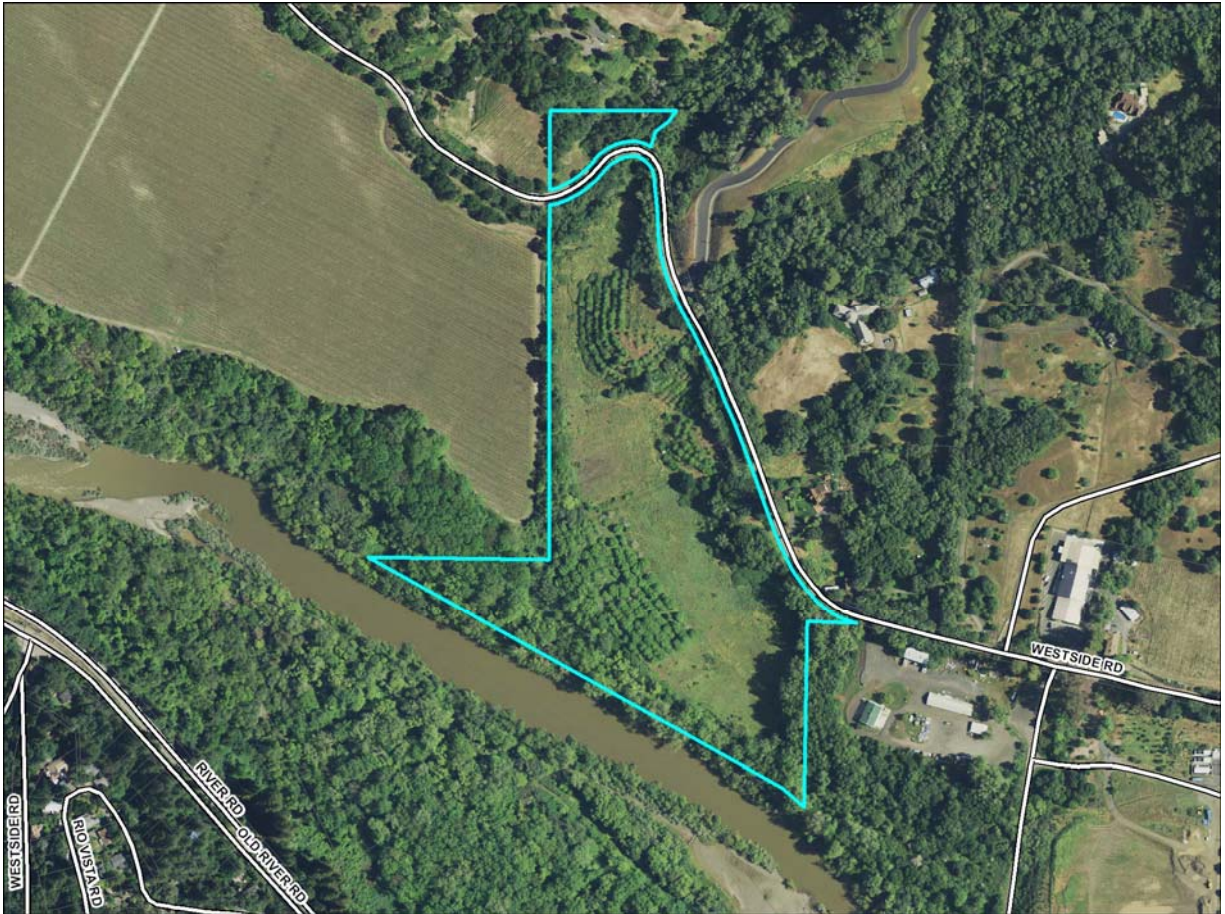


## District 5

### *Sonoma County Water Agency*

Mirabel area (White Property)

<u>APN</u>	<u>Acres</u>	<u>Zoning</u>	<u>Combining District</u>
110-280-022	29.3	RRD B6 160	BR F1 F2 SR VOH



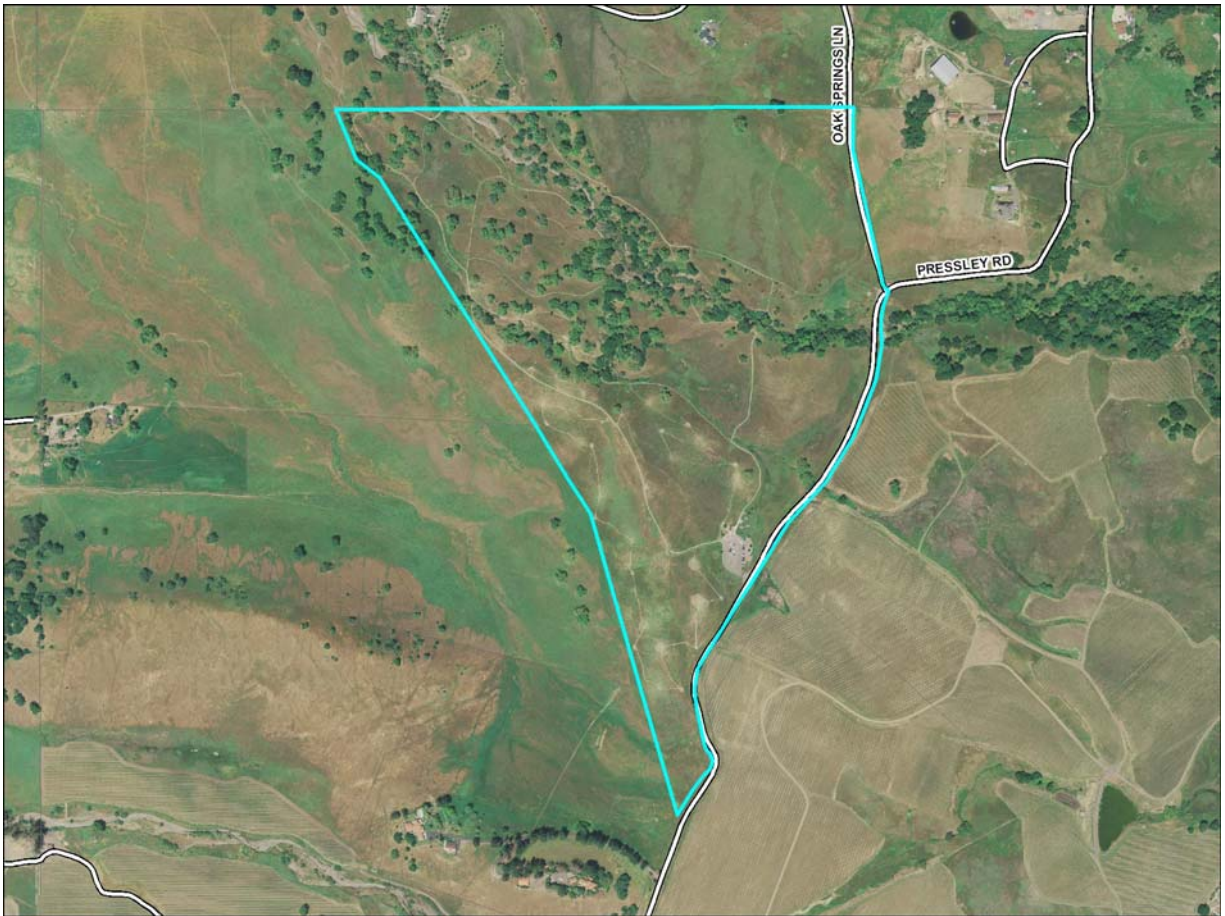
# Potential Grazing Sites

## District 1

### *Sonoma County Regional Parks*

Crane Creek

<u>APN</u>	<u>Acres</u>	<u>Zoning</u>	<u>Combining District</u>
047-251-003	128.84	PF	BR SR

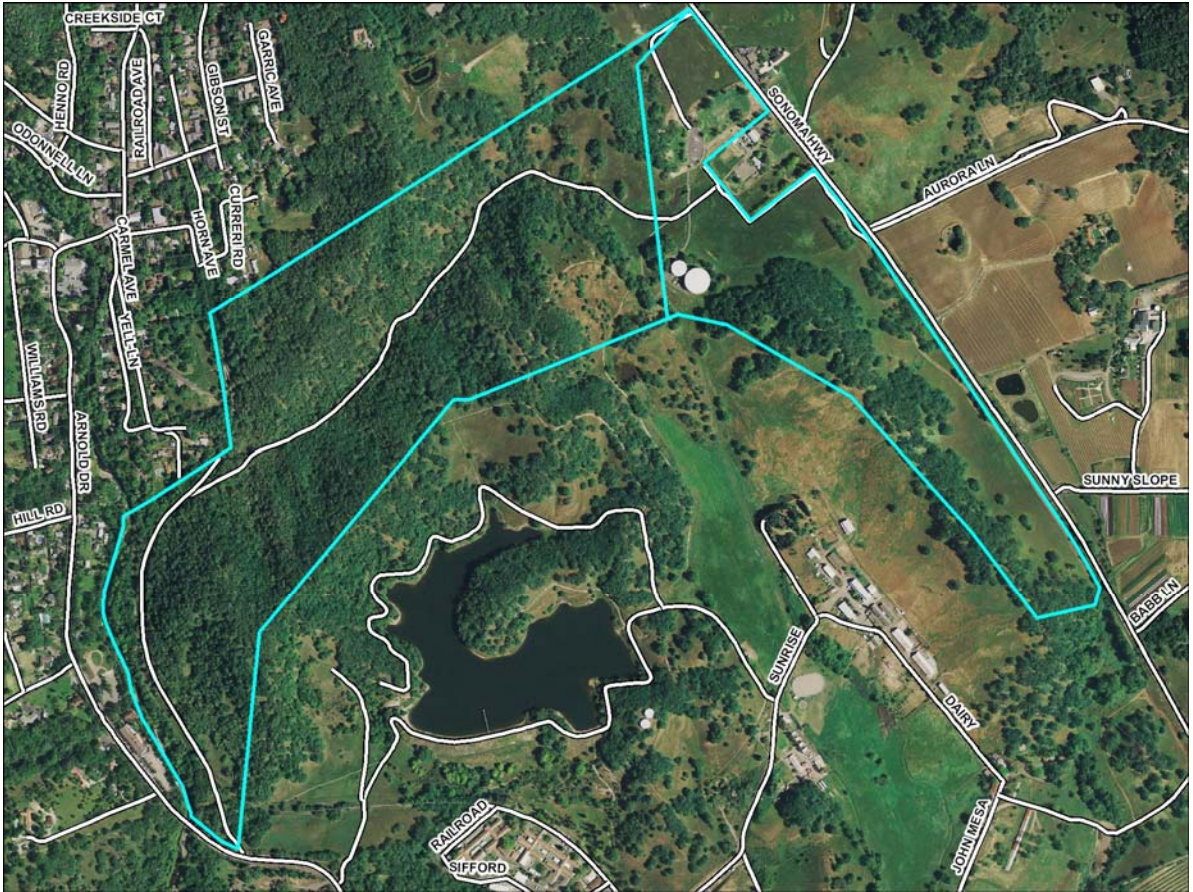


# District 1

## Sonoma County Regional Parks

Sonoma Valley

<u>APN</u>	<u>Acres</u>	<u>Zoning</u>	<u>Combining District</u>
054-150-011	138.81	PF B7	BR F2 SD SR
054-150-012	69.3	PF B7	SD SR



## District 1

### *Sonoma County Regional Parks*

Bouverie Wildlife Preserve

<u>APN</u>	<u>Acres</u>	<u>Zoning</u>	<u>Combining District</u>
054-160-022	22.61	LIA B6 60	SR



## District 1

### *Sonoma County Agricultural Preservation & Open Space District*

Sonoma Mountain Ranch

<u>APN</u>	<u>Acres</u>	<u>Zoning</u>	<u>Combining District</u>
136-190-008	80	RRDWA B6 100	SR VOH
136-190-016	192.5	RRDWA B6 40	SR
136-190-003	10.05	RRDWA B6 40 Z	SD SR

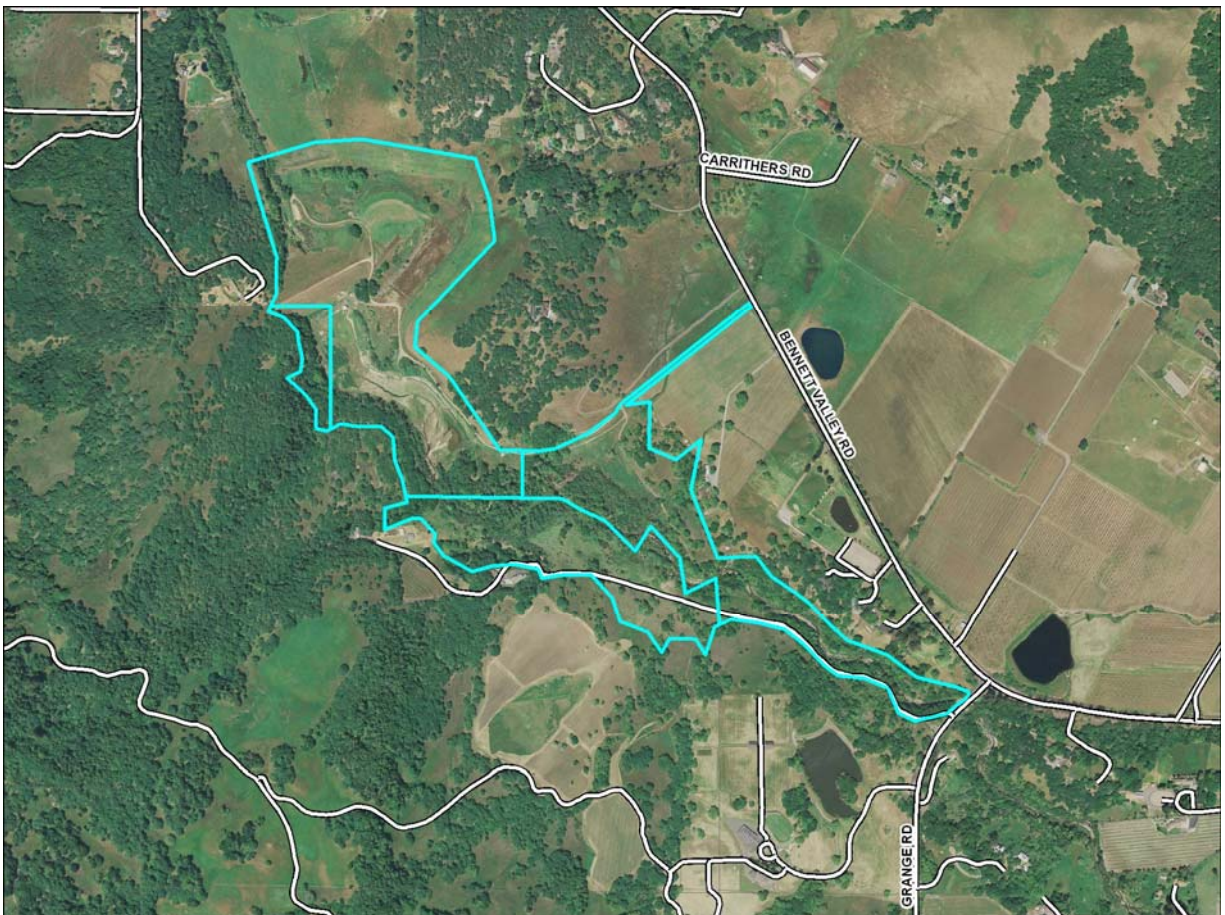


## District 1

### Sonoma County Water Agency

Matanzas Reservoir

<u>APN</u>	<u>Acres</u>	<u>Zoning</u>	<u>Combining District</u>
049-130-006	59.4	RRD B6 40/10 (Ac/DU)/AcMin	BR SD SR VOH
049-150-010	24.34	Under review – consult a planner	
049-060-054	30.89	DA B6 20	BR SD SR VOH
049-150-009	4.11	RRD B6 40/10 (Ac/DU)/AcMin	BR SD SR

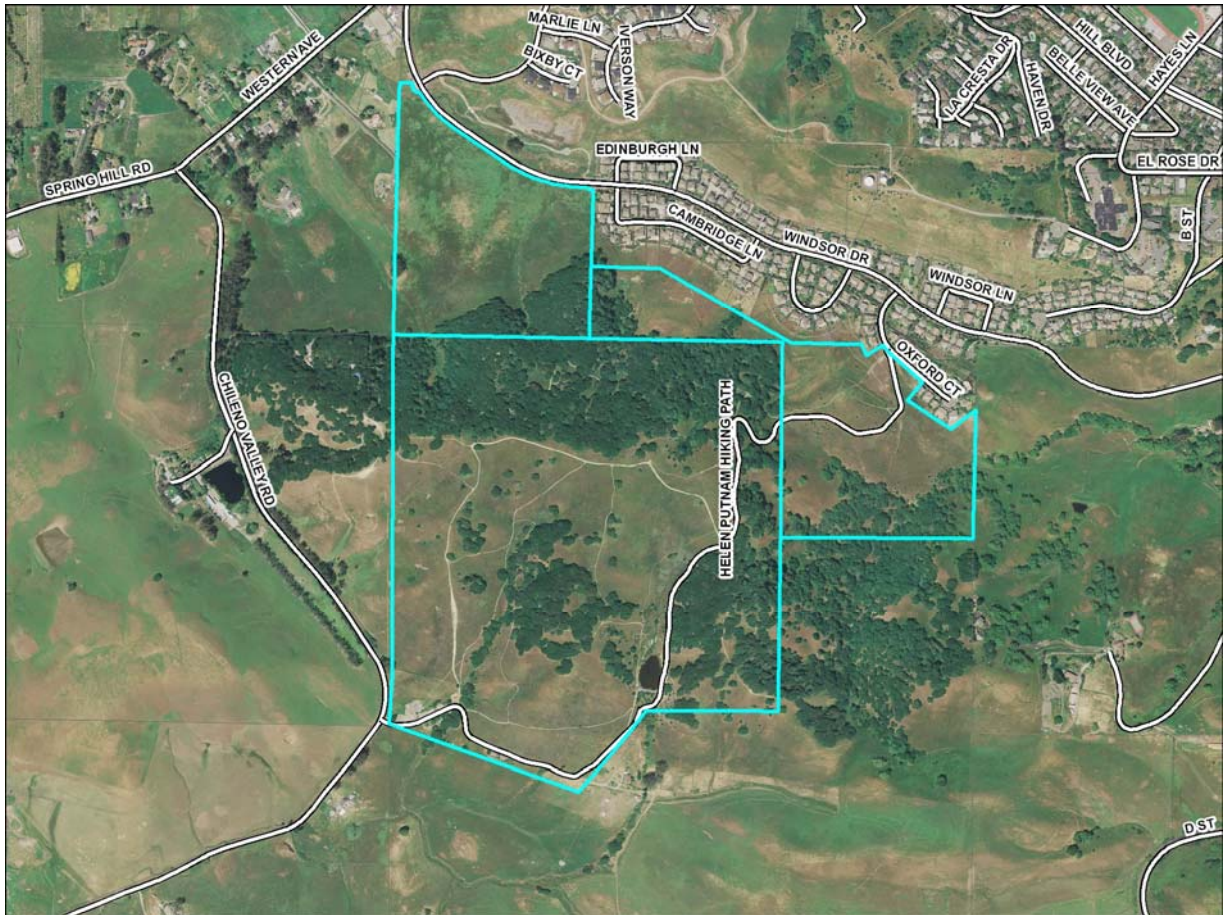


## District 2

### Sonoma County Regional Parks

Helen Putnam

<u>APN</u>	<u>Acres</u>	<u>Zoning</u>	<u>Combining District</u>
020-030-042	39.6	OSP	Open Space Park (City of Petaluma)
020-080-012	171	PF B7	None
019-120-039	45.25	OSP	Open Space Park (City of Petaluma)



## District 2

**County of Sonoma**

Landfill (already grazed)

<u>APN</u>	<u>Acres</u>	<u>Zoning</u>	<u>Combining District</u>
024-080-020	131.1	LEA B6 100 Z	None

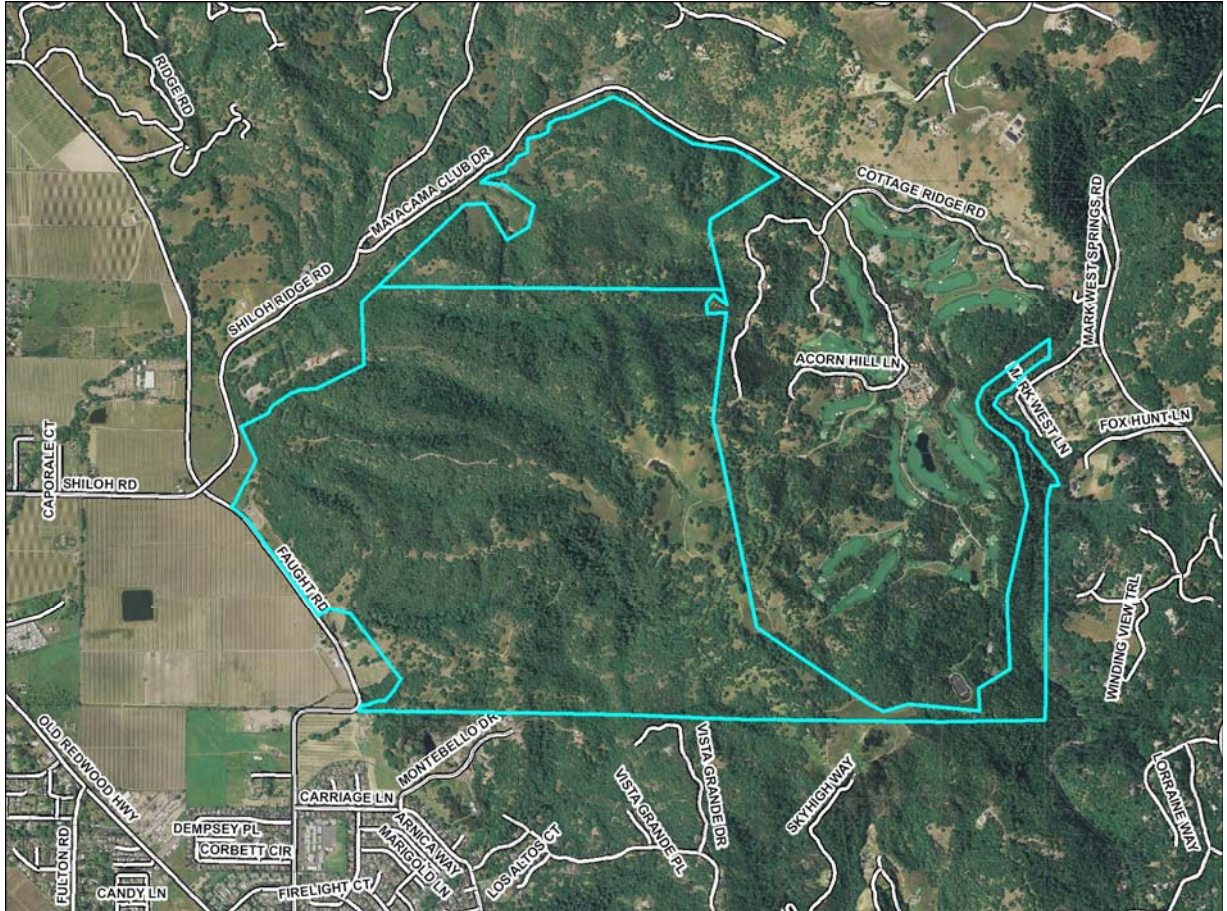


## District 4

### Sonoma County Regional Parks

Shiloh Ranch

<u>APN</u>	<u>Acres</u>	<u>Zoning</u>	<u>Combining District</u>
067-260-032	691.56	PF	BR F1 F2 G SR
079-150-030	153.87	PF	None

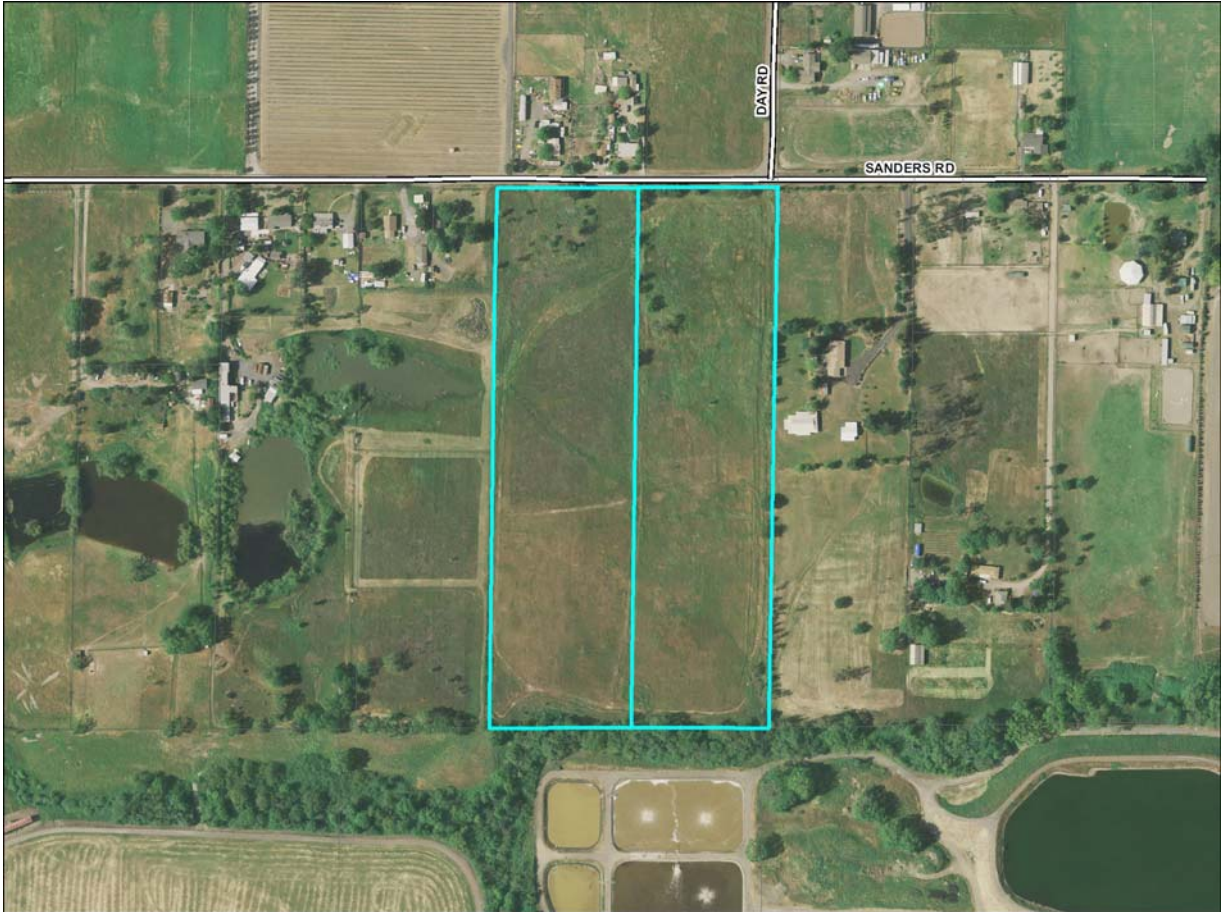


## District 4

### *County of Sonoma*

Airport Approach

<u>APN</u>	<u>Acres</u>	<u>Zoning</u>	<u>Combining District</u>
164-170-014	10	PF	F2 VOH
164-170-015	10	PF	F2 VOH



## District 5

### *Sonoma County Regional Parks*

#### Stillwater Cove

<u>APN</u>	<u>Acres</u>	<u>Zoning</u>	<u>Combining District</u>
109-060-006	~97	PF CC	SR
(Include parcels 003, 007, 008, 009, 011)			

