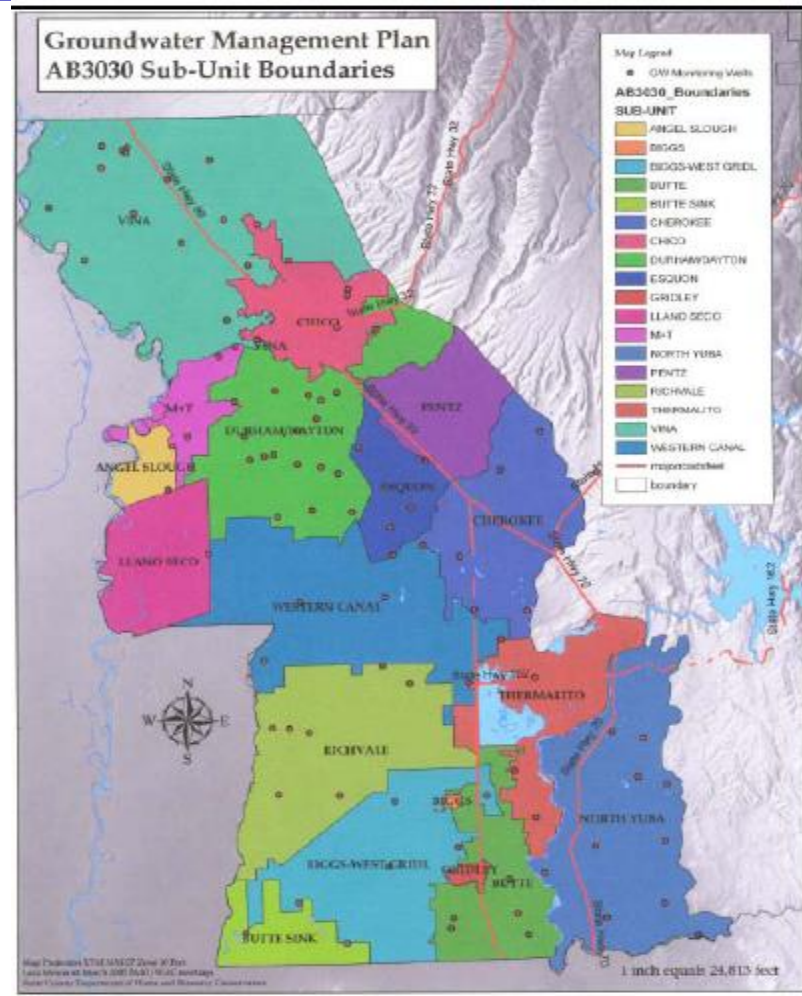


***“Experiences & Lessons  
Learned as Local  
Groundwater Management is  
Implemented”***

***Paul Gosselin, Director  
Butte County Department of Water and Resource  
Conservation***

# Groundwater Management – Basin Management Objective Program



# *Butte County BMO - Chronology*

- **2000** Concept presented to the Butte County Water Commission
  - **BMO Components**
    - Management Areas
    - Key BMO elements
    - Public Input
    - Monitoring
    - Adaptive Management
    - Enforcement
- **2002** – Butte County Board of Supervisors approved development of BMOs
- **2004** – “Groundwater Management Ordinance (Chapter 33A) adopted
- **2006** – Implementation began
- **2008** – BMOIC launched
- **2009** – Technical Advisory Committee Review and Recommendations
- **2011** - Look Back and Program Improvements

# *Butte County BMO - Areas Reviewed*

## **Key BMO Components**

- **Public Participation**
- **Monitoring**
- **BMO/Alert Stage Methodology**
- **Evaluation and Response to BMO**
- **Reporting**
- **Outreach**

# *Butte County BMO - Review Process*

## **Successes**

- **Subinventory Units designations**
- **Monitoring**
  - **Key wells**
  - **Monitoring frequency**
  - **Monitoring parameters**
- **BMO Criteria and Alert Stages**
- **BMO Data**
- **Outreach on Groundwater Conditions**

## **Areas for Improvement**

- **BMOs and Alert Stages definitions**
- **Role of the WAC**
- **Role of SIU representatives**
- **TAC review process**
- **Response to BMO noncompliances**
- **Reporting**

# *Butte County BMO – Review Process*

- **Clarify the role of BMO program**
  - Systematic monitoring
  - Establish criteria to evaluate groundwater
  - Evaluate and report results
  - Provide outreach to stakeholders
- **Goal**
  - Provide information to foster (not regulate) local groundwater management

## *Butte County BMO - Future*

**Improvements Based on Future  
Experiences and Lessons**