



Designing or Redesigning Your Garden

Central Valley Style

Central Valley Style

- 1) *Any architectural style or theme:* “Central Valley Mission,” “Central Valley Cottage,” “Central Valley Modern.”
- 2) *Emphasis on climate-right plants – they make up the majority of the garden:* Includes California natives and plants that don’t grow as well in other parts of California. Some may require summer water, but require less labor and are zone-right.
- 3) *Lawn is a feature, not a space filler:* Often there is no lawn at all, or alternate ground covers instead of turf.
- 4) *Plants include food and/or heritage – they are features/focal points:* Featured plants that require more resources (labor, water, fertilizer) and originate in very different climate zones.
- 5) *Includes sustainable practices:* Composting, mulch, efficient irrigation, permeable walk & driveways, wildlife habitat.





Design = Plan

Start with function(s)



Plan your areas: hardscape, circulation, entertainment, service, trees, planting beds.



Plants = List the favorites, food, etc. that you want to have.

“I just have to have a few rose bushes”

“I really want to grow my own vegetables, at least tomatoes”

“I don’t want to get rid of the entire lawn, maybe just make it smaller.”



How much space or number of plants will this be?

To be an example of Central Valley Style, these categories are not the majority, but they are important parts of the garden.

Design = Plan

Plants = List the favorites, food, etc. that you want to have.



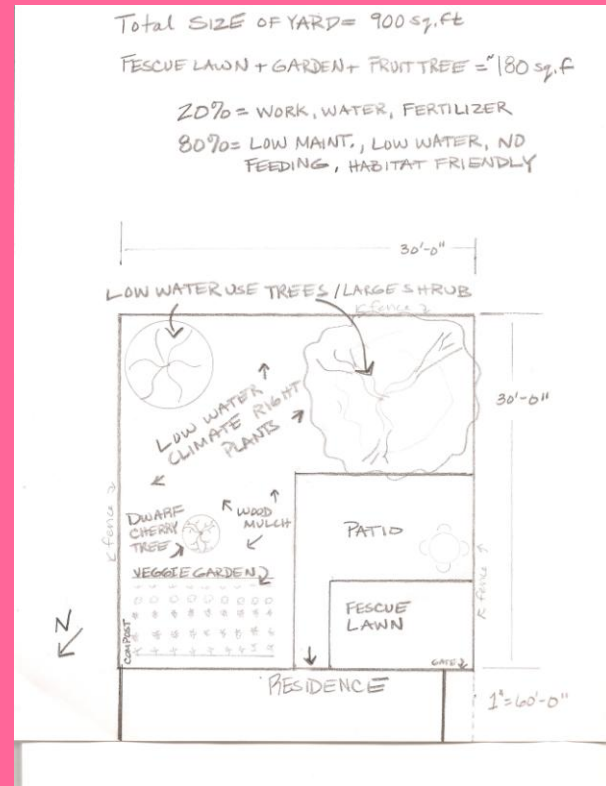
Plants = How much space/how many plants do you still need to fill the beds? These can be any combination of California native or other climate-adapted plants from all over the world.

- 1) low added water need.
- 2) not much bothered by pests and diseases.
- 3) don't require much, if any, pruning.
- 4) don't require fertilizer.



Don't forget to still design for "four season interest." Include foliage texture and color, season of bloom, berries, mix of evergreen and deciduous, vertical and horizontal plants.

Pareto Principle or 80/20 rule



20% of the landscape will take 80% of the resources.
80% of the landscape needs only 20% of the resources

resources = your time, money to hire help, water, fertilizer, pest control

Function(s)=

- ❖ bird friendly
- ❖ good view from house
- ❖ entertain during warm weather
- ❖ STOP MOWING LAWN
- ❖ keep mature trees, and add a Dogwood.
- ❖ make it more interesting



Sustainability & Function







Place to fill in with color annuals or just “play” with plants. Allows for “impulse buying” without guilt. (Part of 20%, but bird bath & mulch make it sustainable too.)

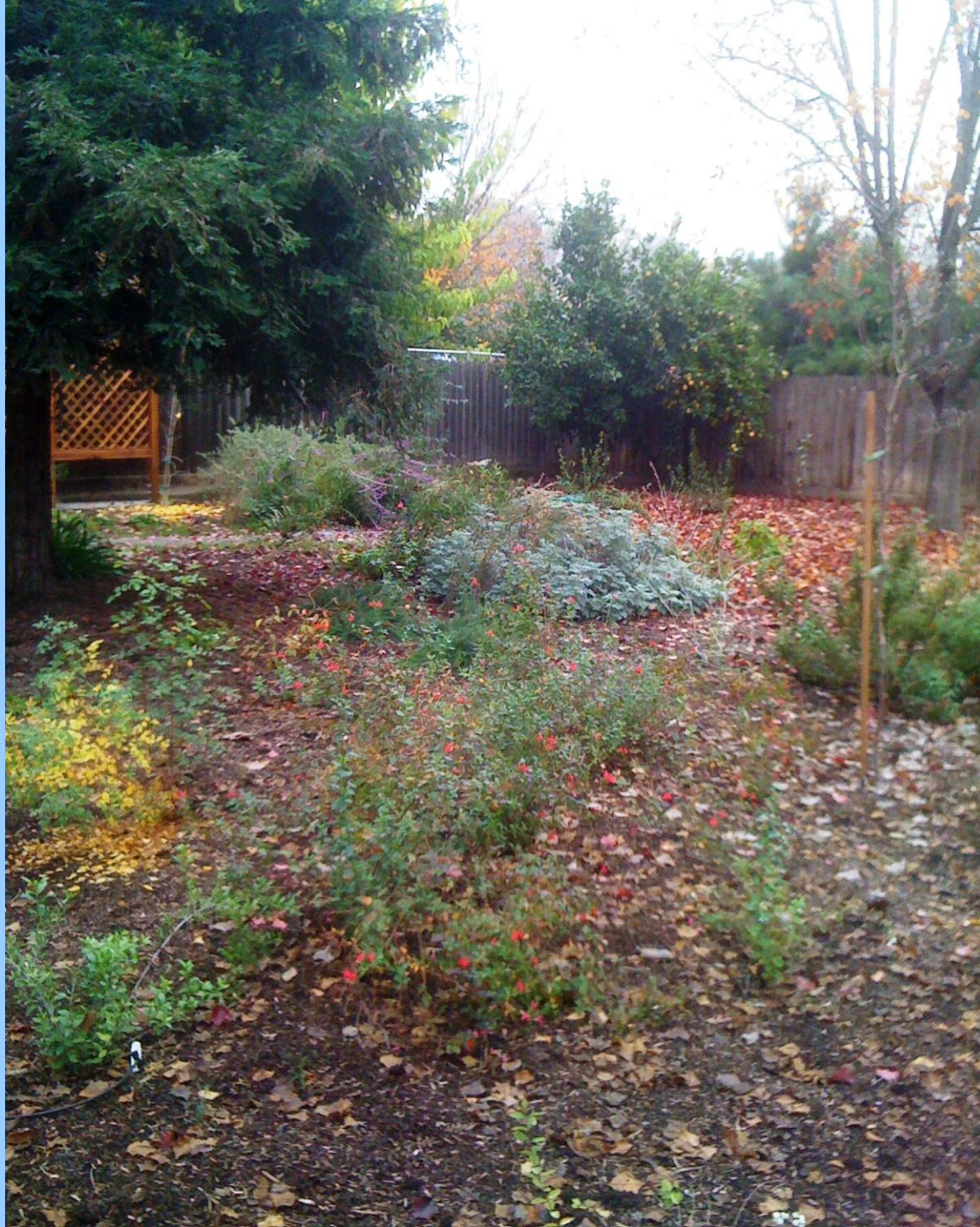
20%

Coastal
Redwoods

Dogwood

Lemon
Tree

Camelia



80%

CA native
and other
climate-
adapted
plants with
low water
and low
maintenance
needs.







Function(s)=

No Lawn

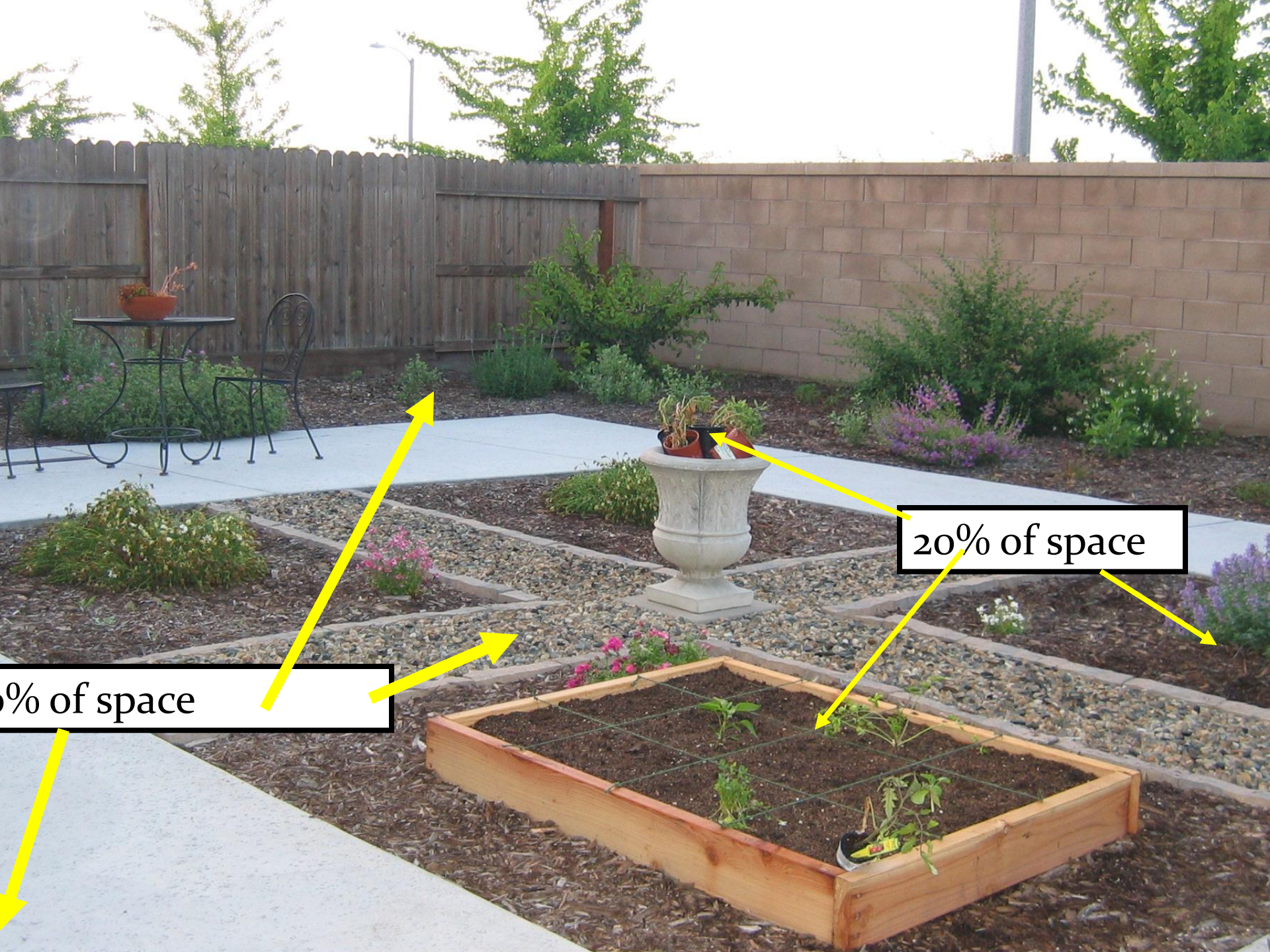
Low Maintenance

Low Water/comply
with water rationing
easily

View from House

Have some Vegetables
and Herbs





5% of space

20% of space









Function (s)=

Reduce lawn Size

Make Front Yard More interesting

Increase birds and pollinators

Low Maintenance and Low Water Use

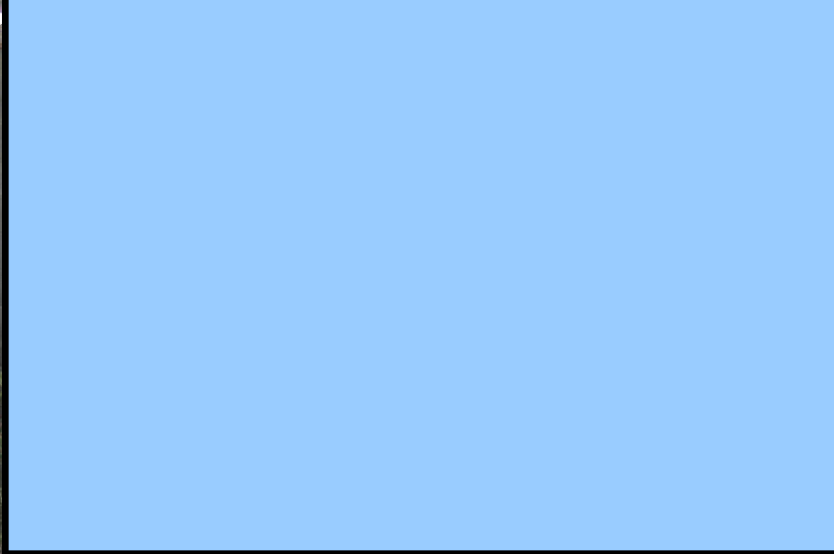
Be able to buy plants over time and tuck them in wherever there's a gap

Have some favorites like a few rose bushes.

Loves herbs but there's no room in backyard and don't want to try to keep a set-aside herb garden looking good all the time.



Planting Beds are a mix of edibles, herbs and climate adapted, easy care plants.



20%

Chinese
Elm tree

Rose
bushes

Lawn
(reduced
size)

Some
small
annual
herbs



80%

California
native and
other
climate-
adapted
plants

including
perennial
herbs.

Any kind of architectural or design theme can be combined with Central Valley Style!





Includes Food, Heritage
or Cultural favorites

Sustainable
Practices ---
permeable path

Emphasis on
Climate-Right
Plants





Function(s) =

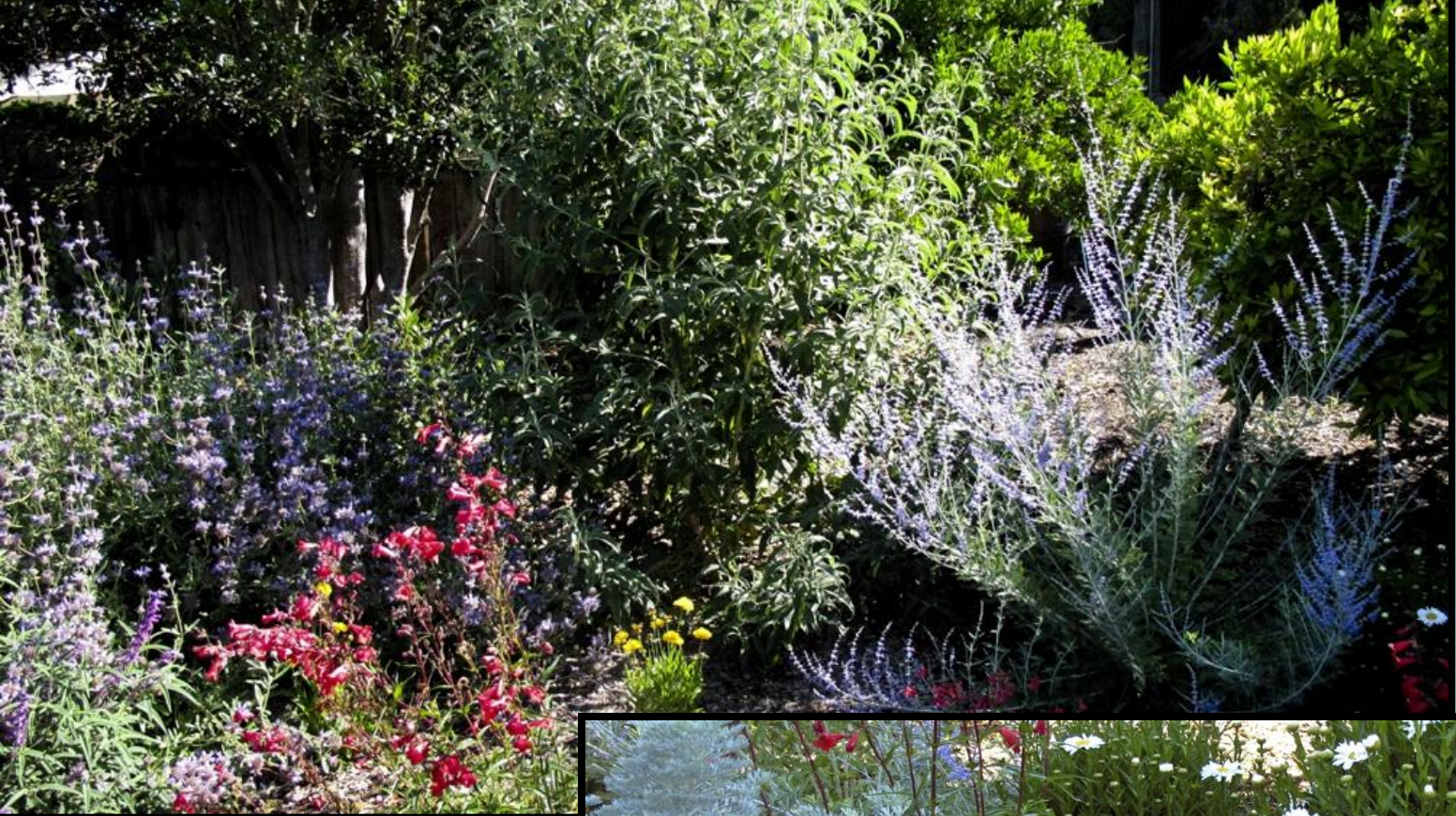
Turn “ordinary” tract home back yard into beautiful space

Reduce lawn for lower maintenance and resource use

Place to sit and enjoy wildlife

Place for elderly but active lady to work but not get overwhelmed.









- 1) Combines with any architectural or design theme
- 2) Emphasis on climate-adapted plants
- 3) Includes food-producing and/or family, cultural or heritage favorites
- 4) Sustainable Practices
- 5) Lawn is placed & sized with intention and is a feature of the whole.

















As with any style, gardens can be
influenced by
or
demonstrate many elements of
or
be a **strong bold example** of
“Central Valley Style.”

*Gardens, even within a single style, are as
unique as their inventors and caretakers....*

The End

Thank You



Presented by
Tulare/ Kings U.C.C.E
Master Gardeners