



Can Climate Benefit Payments Link Communities to Forests in Northern California?

Bill Stewart

UC Forestry Specialist

Stewart@nature.berkeley.edu

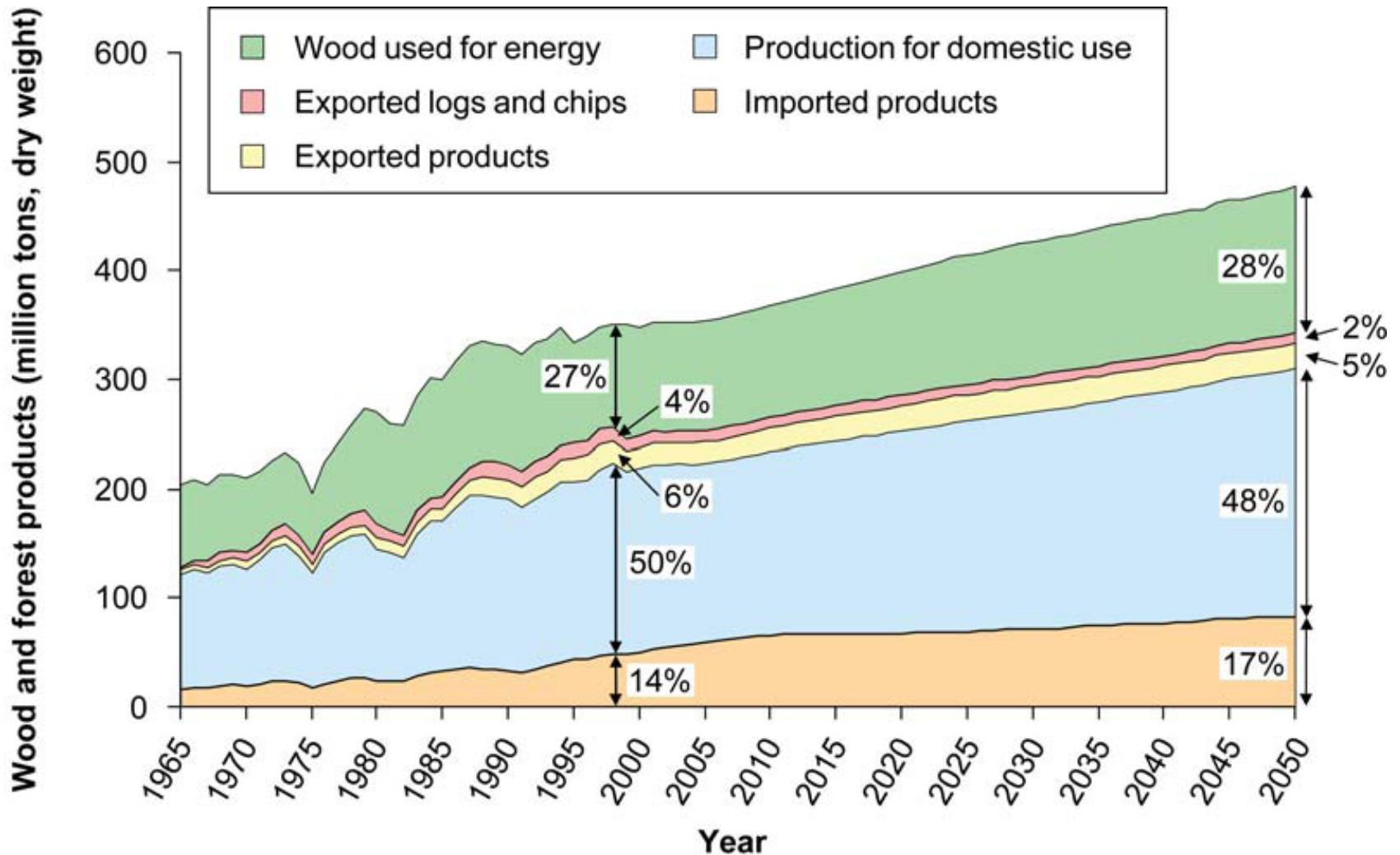
October 30, 2008

At what price is carbon mgt=timber mgt?

CA 2008/ 2 nd half	South- east US	If \$/mbf =	Then \$/CO2 ton is an equal deal
	Pulp- wood	50	6
White Fir	Chip-n- Saw	100	13
Doug. fir		150	19
Pine	Pine	200	25
		250	31
Redwood		600	75

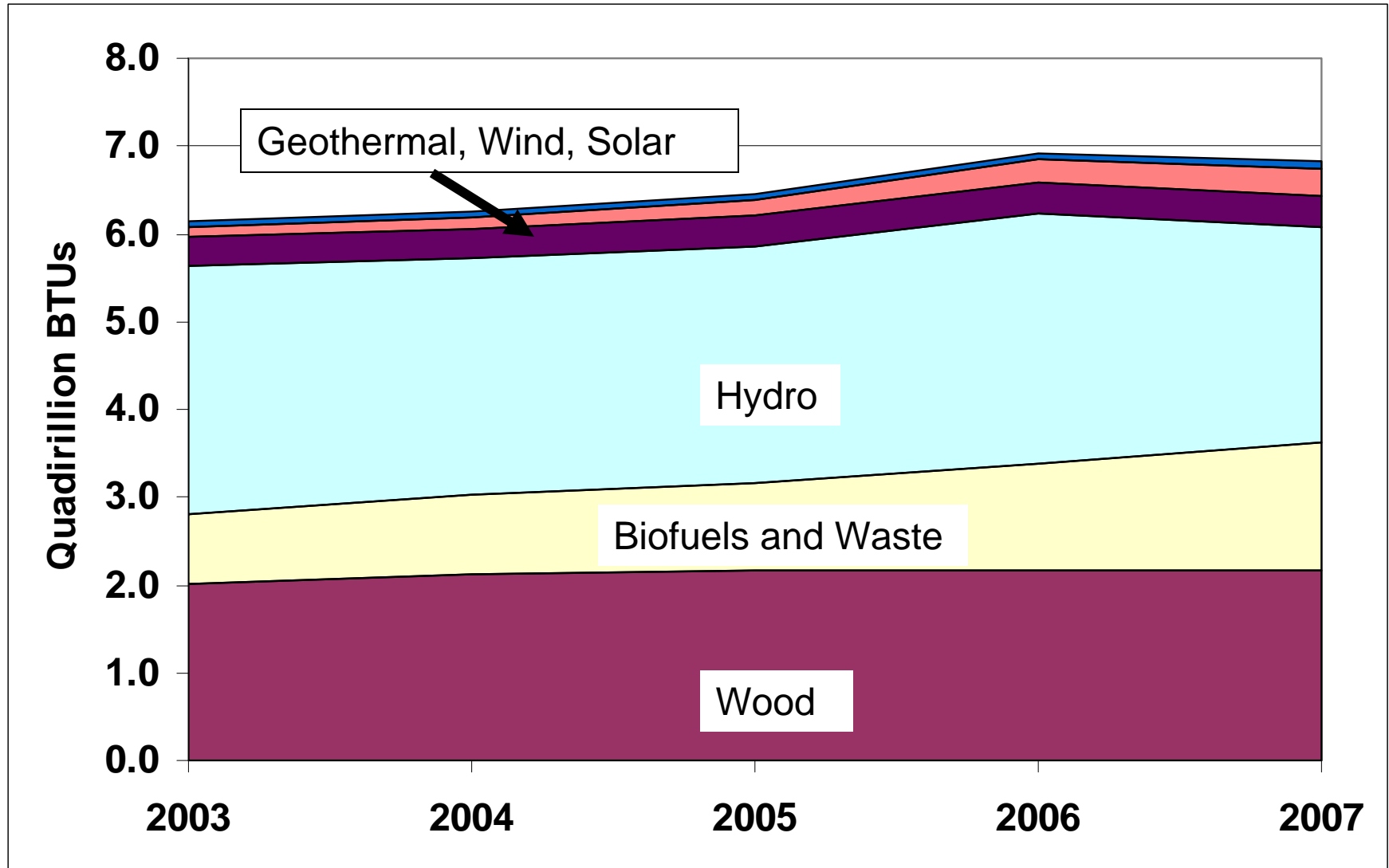
But a forest carbon lease lasts 100 years and you must carry fire and replacement insurance for the whole period from initial payment

Even without a low-carbon premium, wood energy is big





Wood-Based Renewable Energy: Significant but not Growing

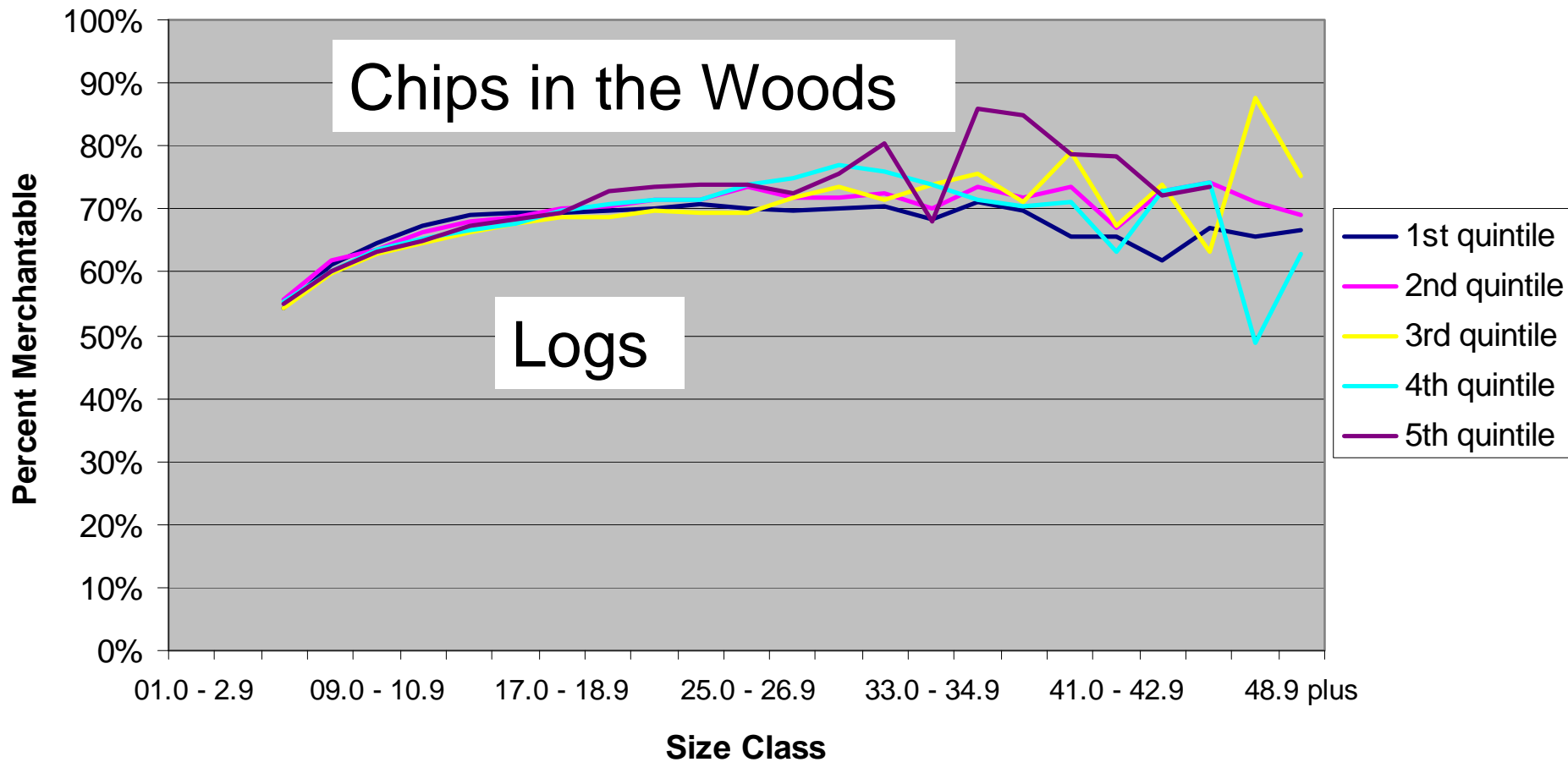


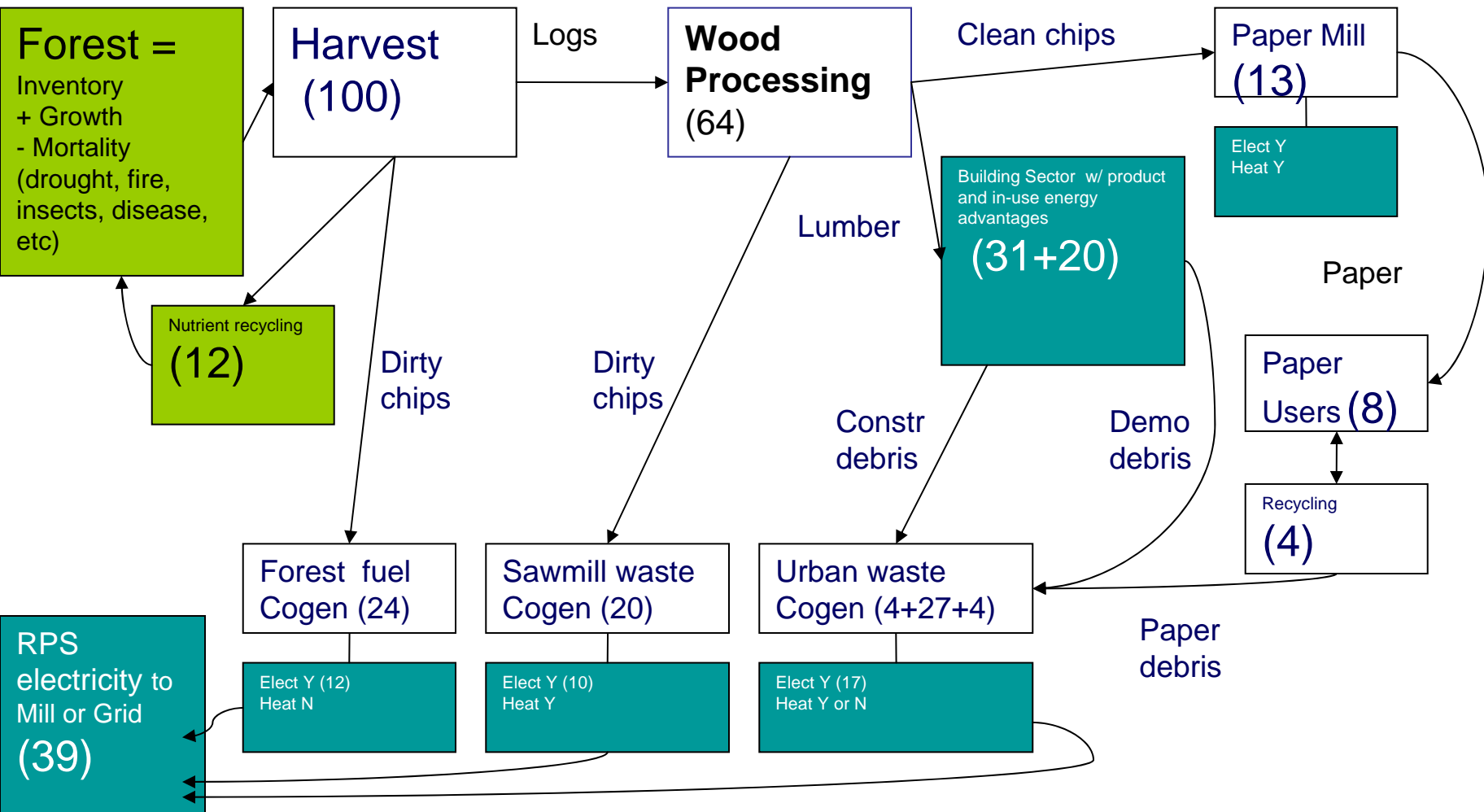


Merchantable/Total Biomass from High Volume per Acre (1st Quintile) to Low Volume per Acre (5th Quintile) Stands

Chips in the Woods

Logs





European Accounting – Track and Maximize the Renewable Energy Benefits

Most Forest Based Climate Benefits Show up in Other Sectors

