

Managing Navel orangeworm: Monitoring and Control

Joel Siegel, USDA/ARS,
SJVASC, Parlier

San Joaquin Valley

Perspective

Quick Review



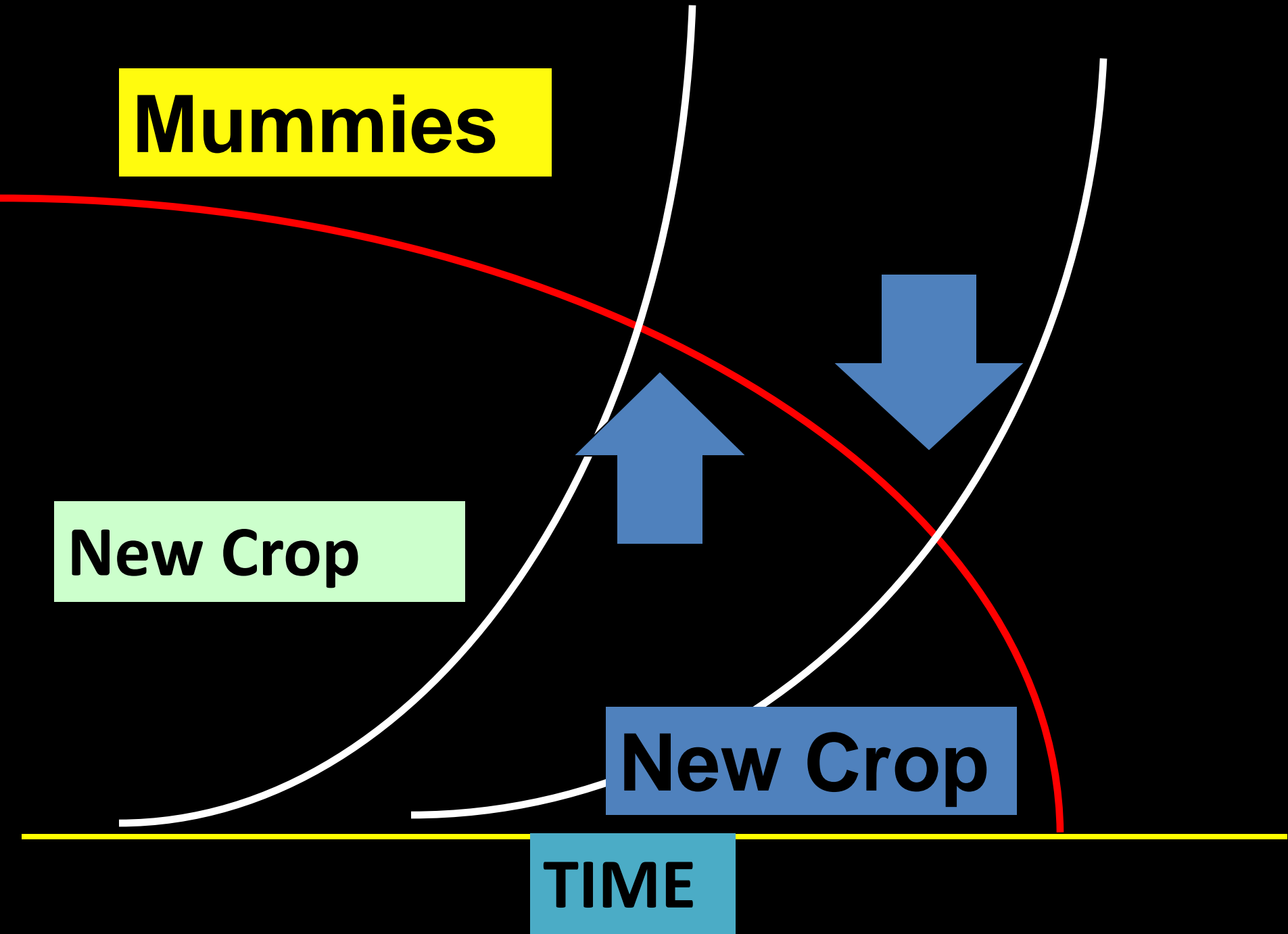
**Sanitation is the
foundation**

Mummies

New Crop

New Crop

TIME



**As food quality
decreases, development
time increases**

Mummies:

1,050 DD

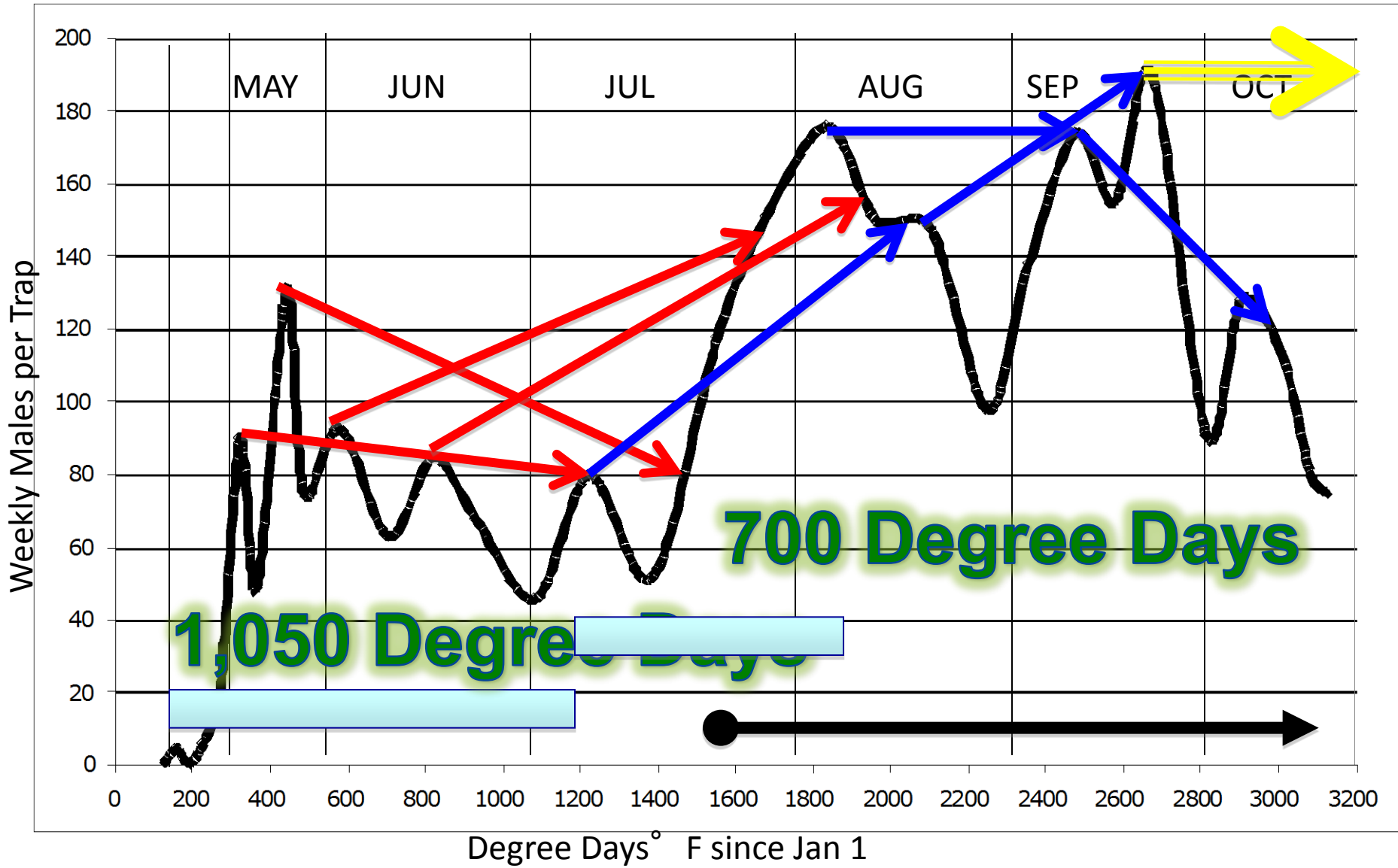
New Almonds:

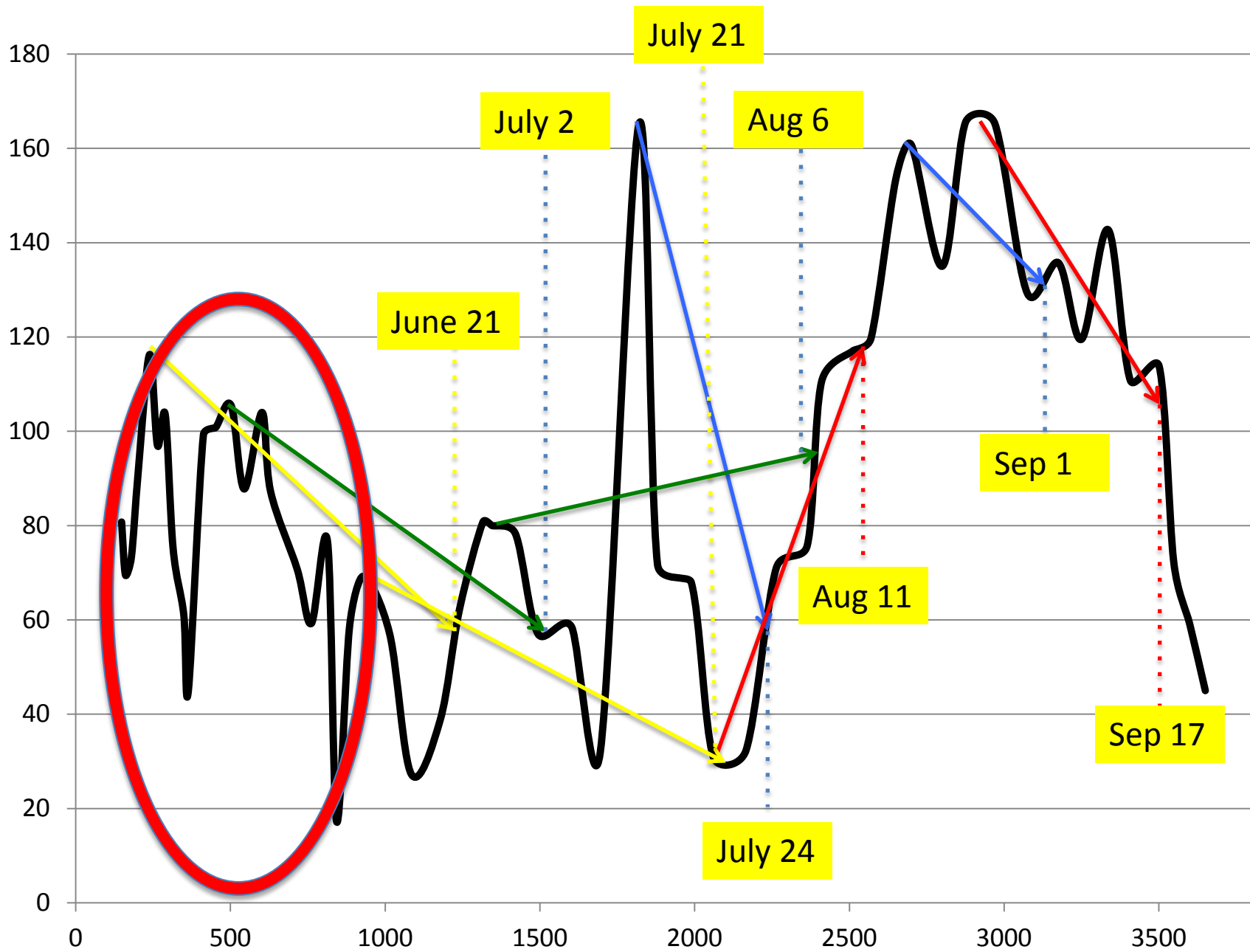
700 DD

New Pistachios:

500-600 DD

Almonds Madera 2010: Block 12-16





Weather to date

NOW seasonal dynamic

Pheromone vs Egg traps

Coverage and Sprays



Heat

Degree Days through May 23

County	2014	2013	2012
Fresno (Parlier)	1,103.9	939.8	832.5
Kern (Lost Hills)	1,075.6	970.8	870.0
Kings (Stratford)	1,085.7	965.4	858.6
Madera (Firebaugh)	1,015.3	897.1	840.0
Tulare (Delano)	1,083.3	1,034.4	930.5

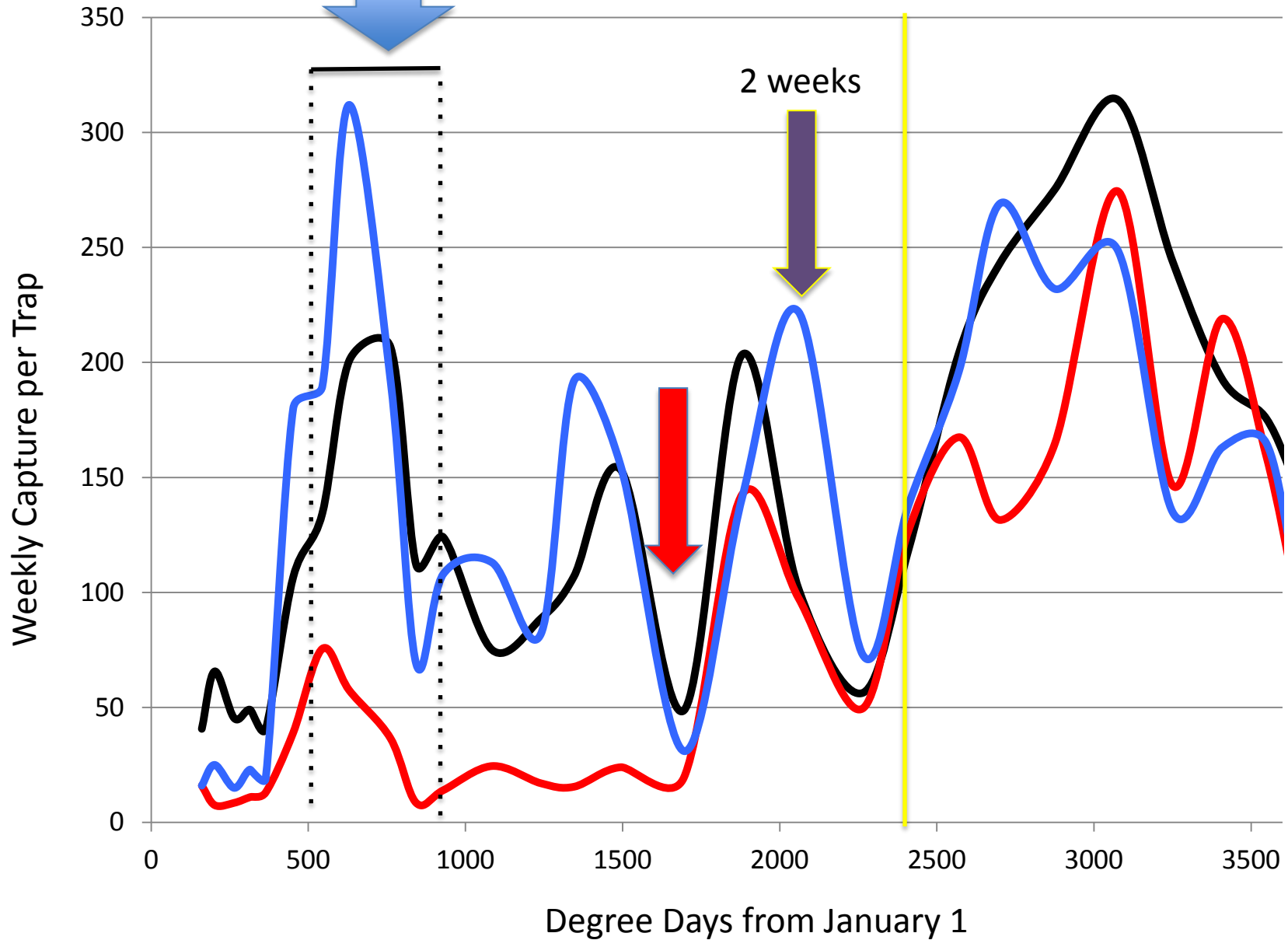
<http://www.ipm.ucdavis.edu/WEATHER/index.html>

**Development will be faster,
potential for an extra generation,
peaks will come sooner, almonds
split earlier**

Treatment Strategy

**Tradeoff between
Population Dynamics
And Nut Susceptibility**

Almonds



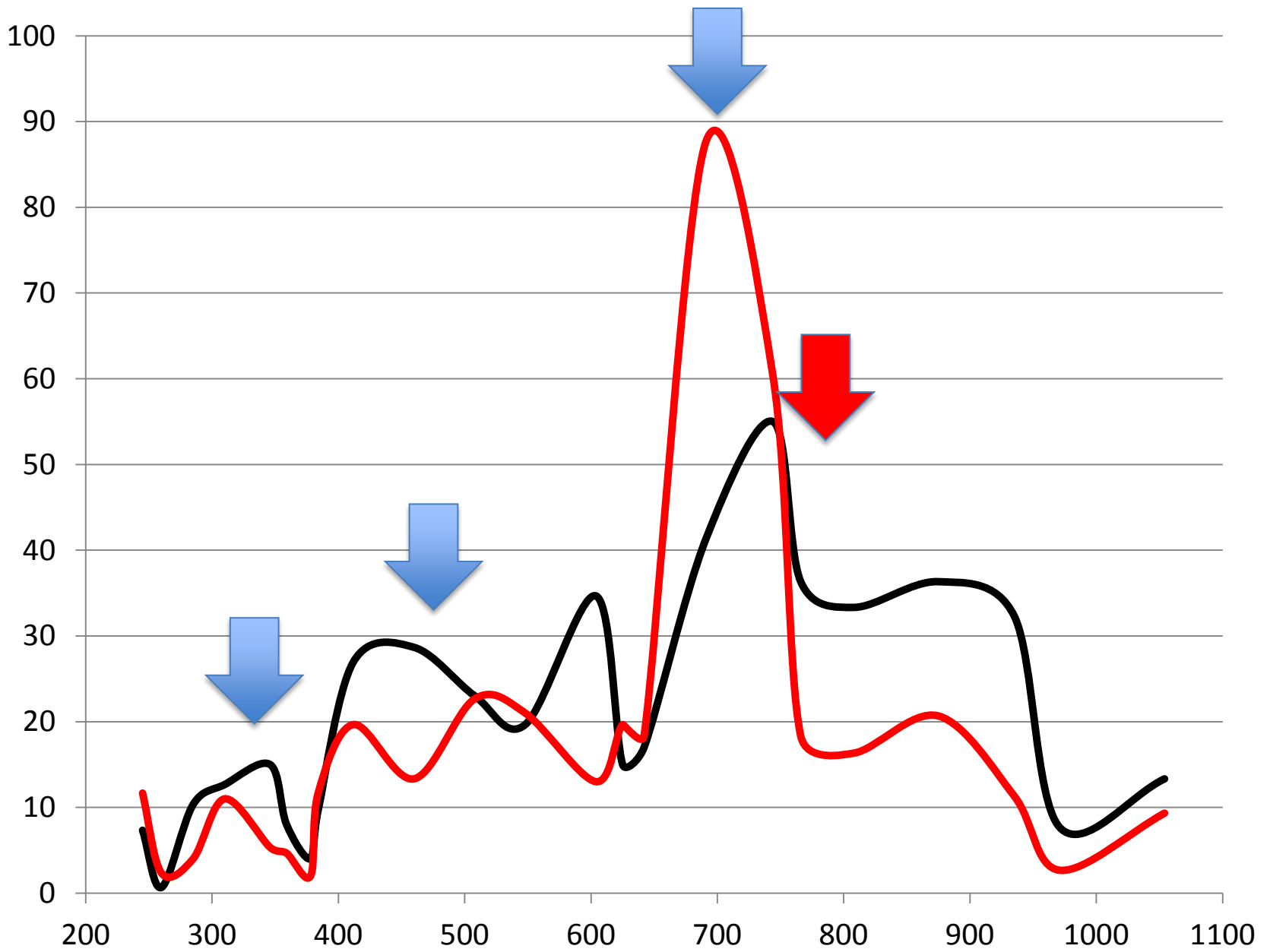
Timing-Population

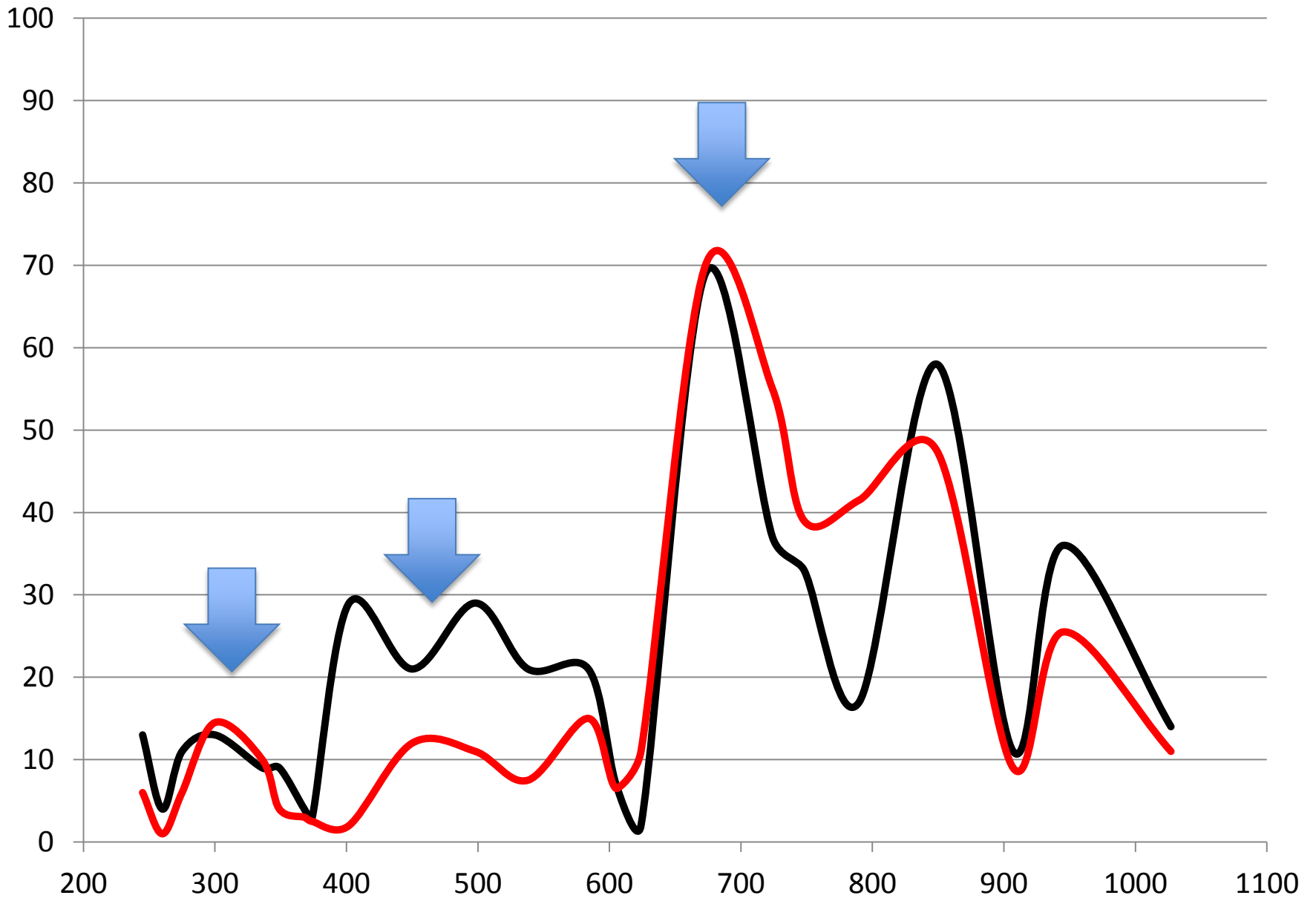


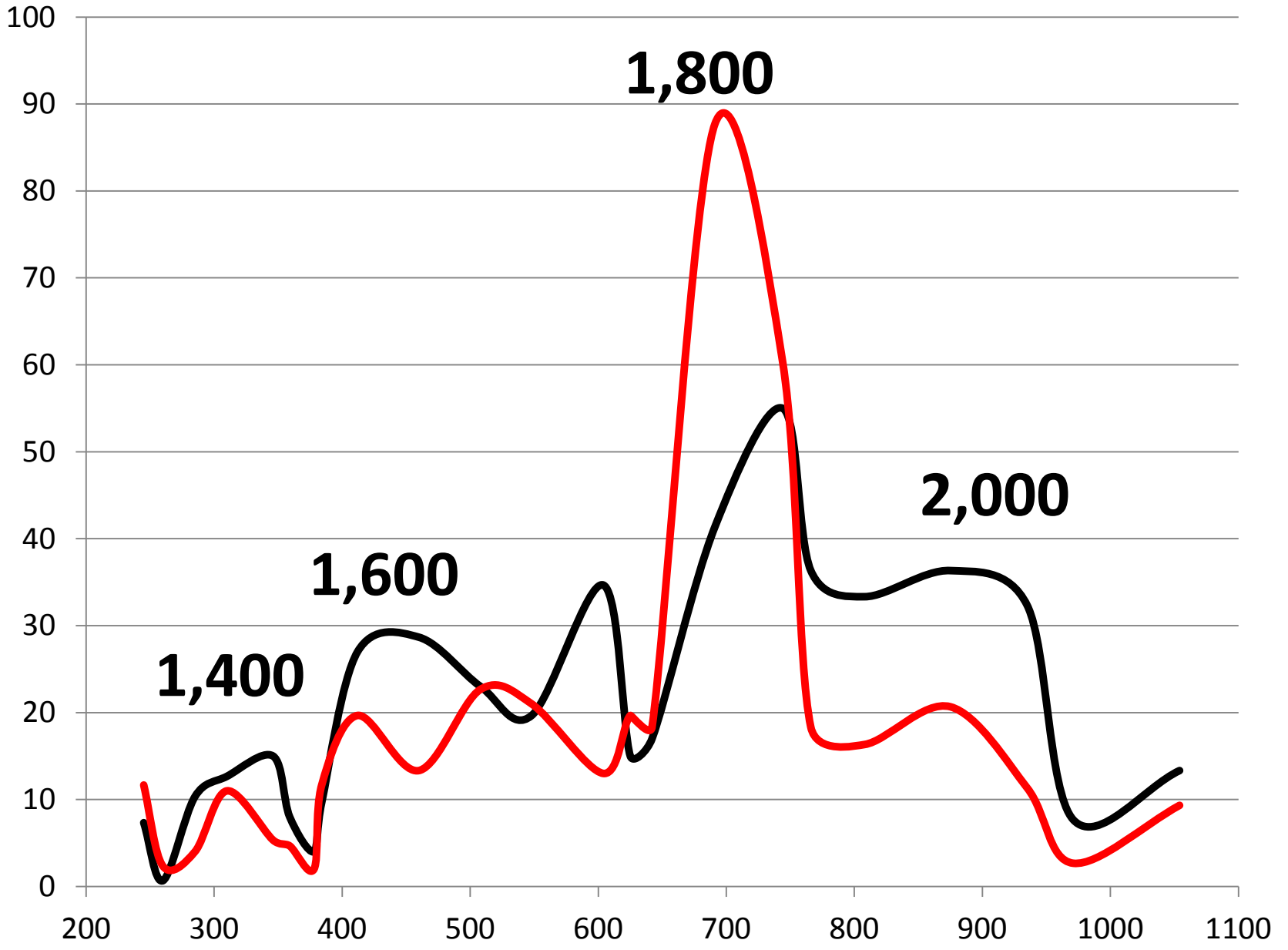
Pheromone Traps

The new kid in town

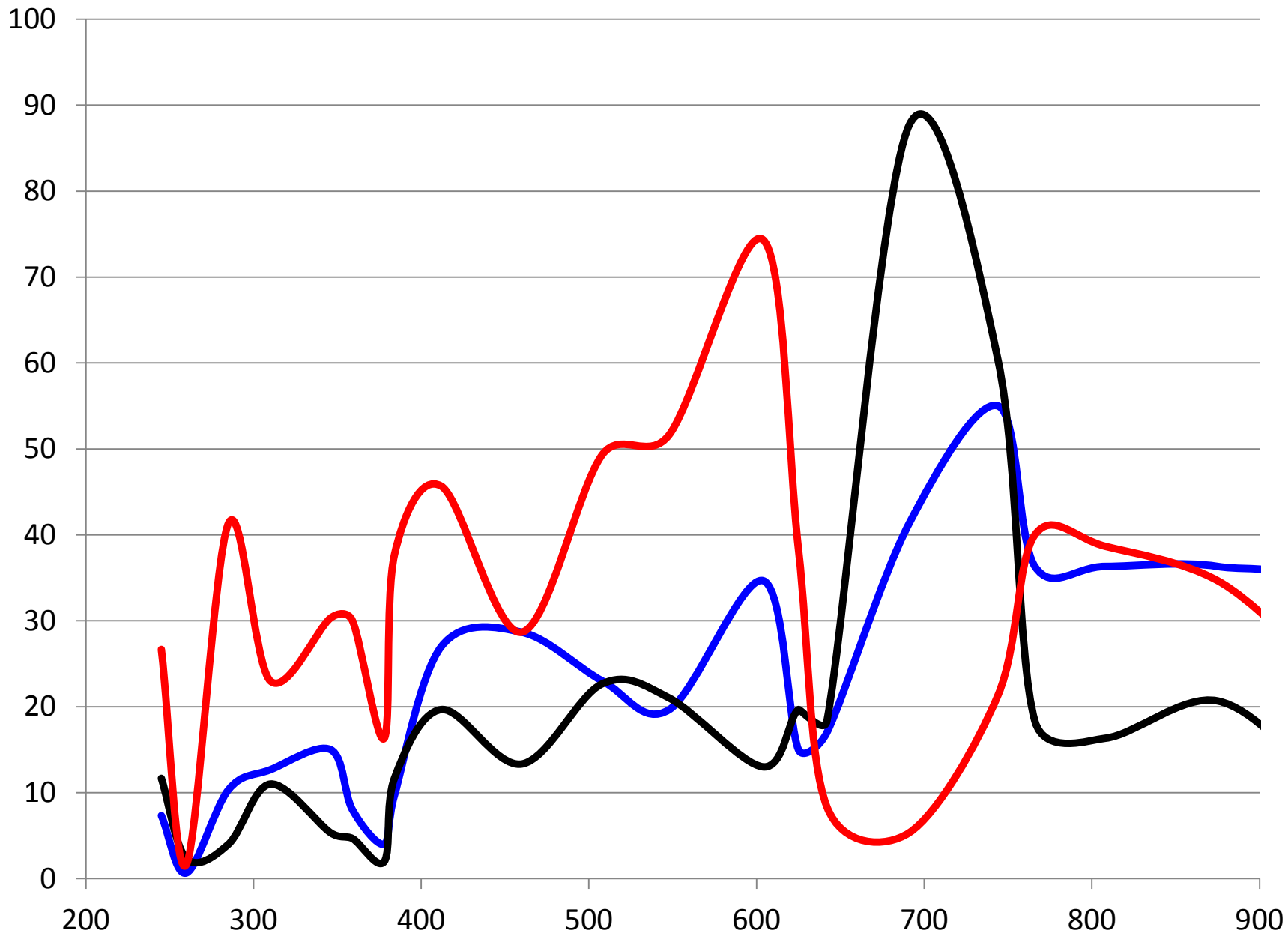
Why focus
on the dumbest
part of the
population?

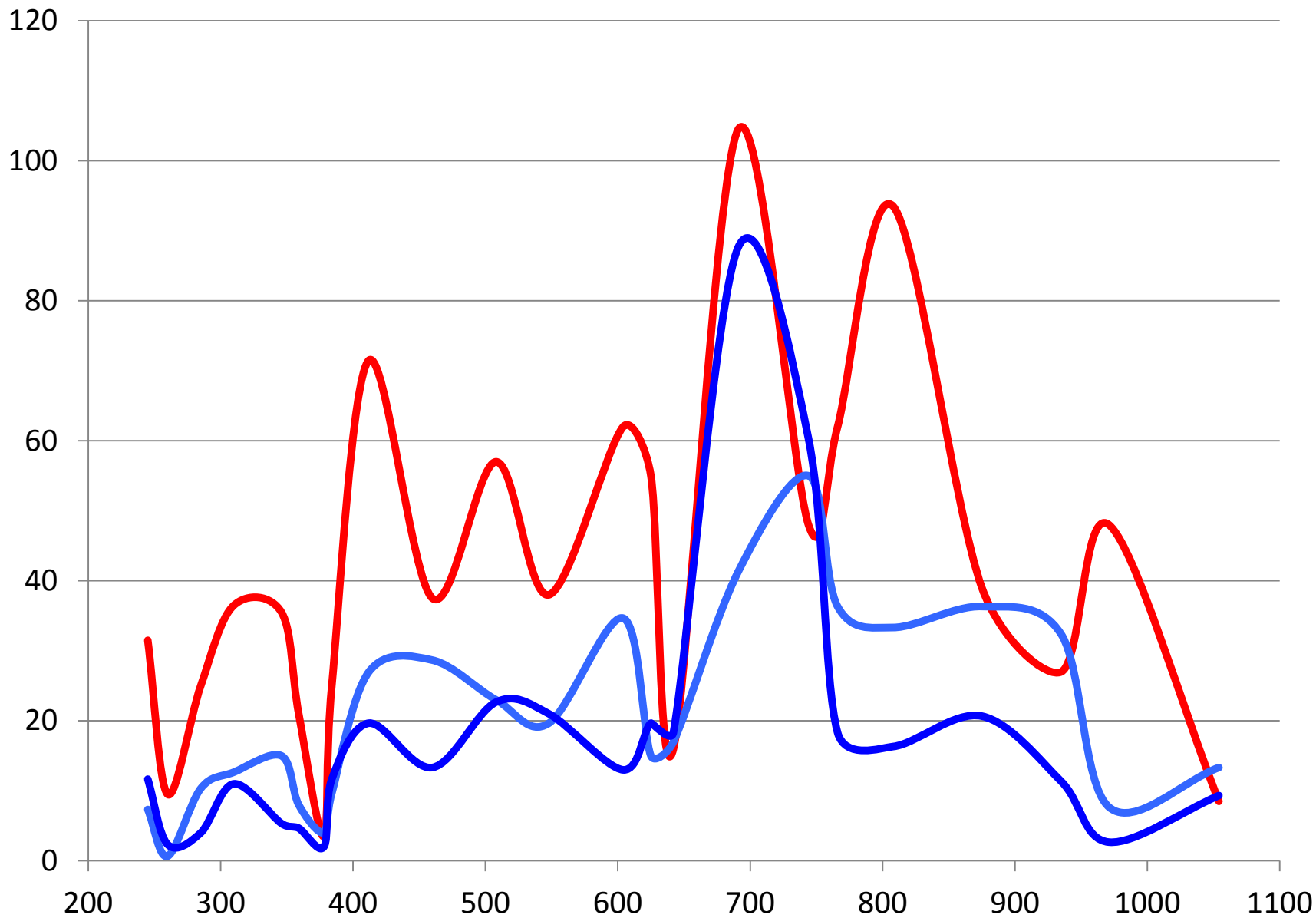


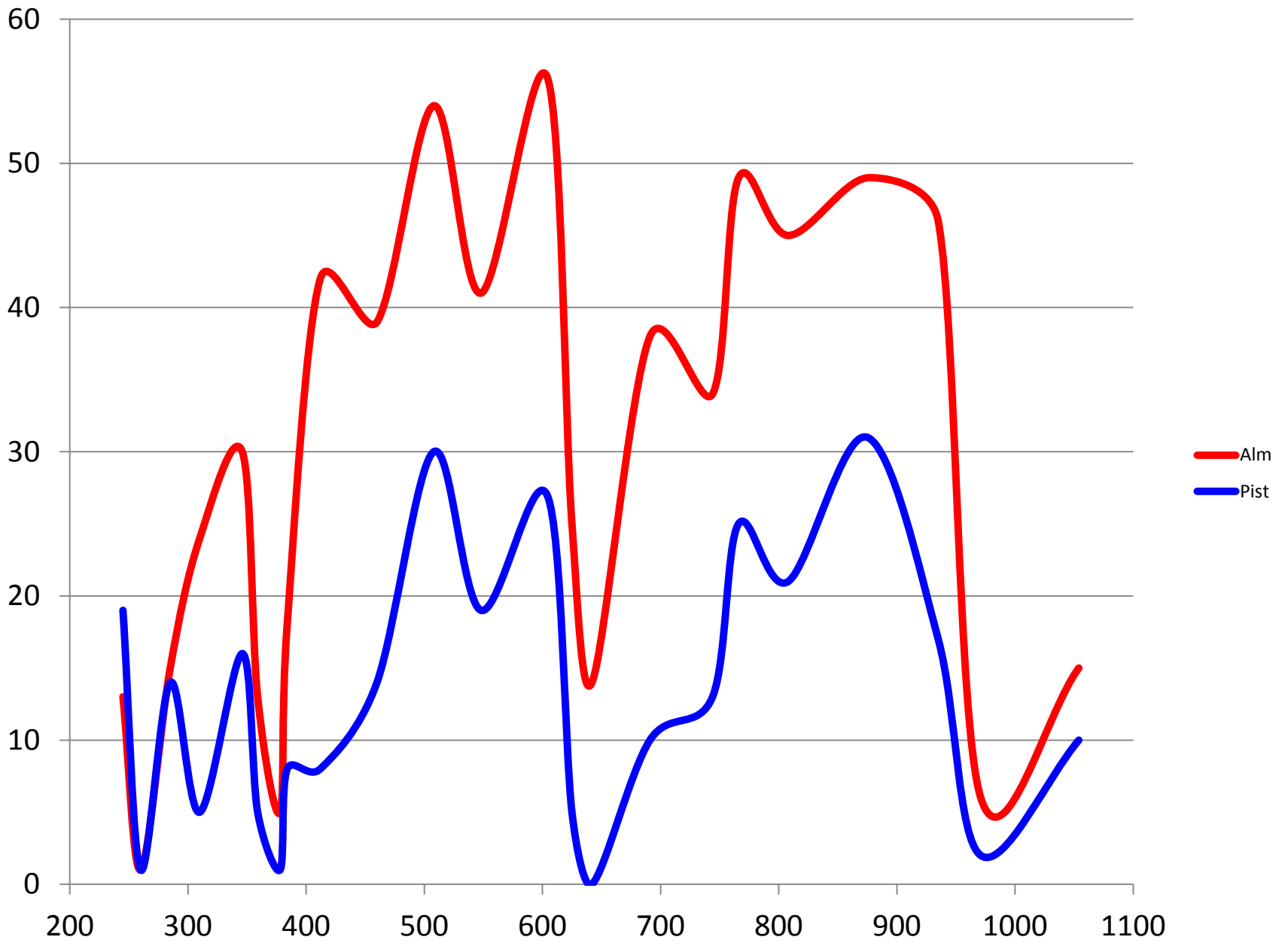


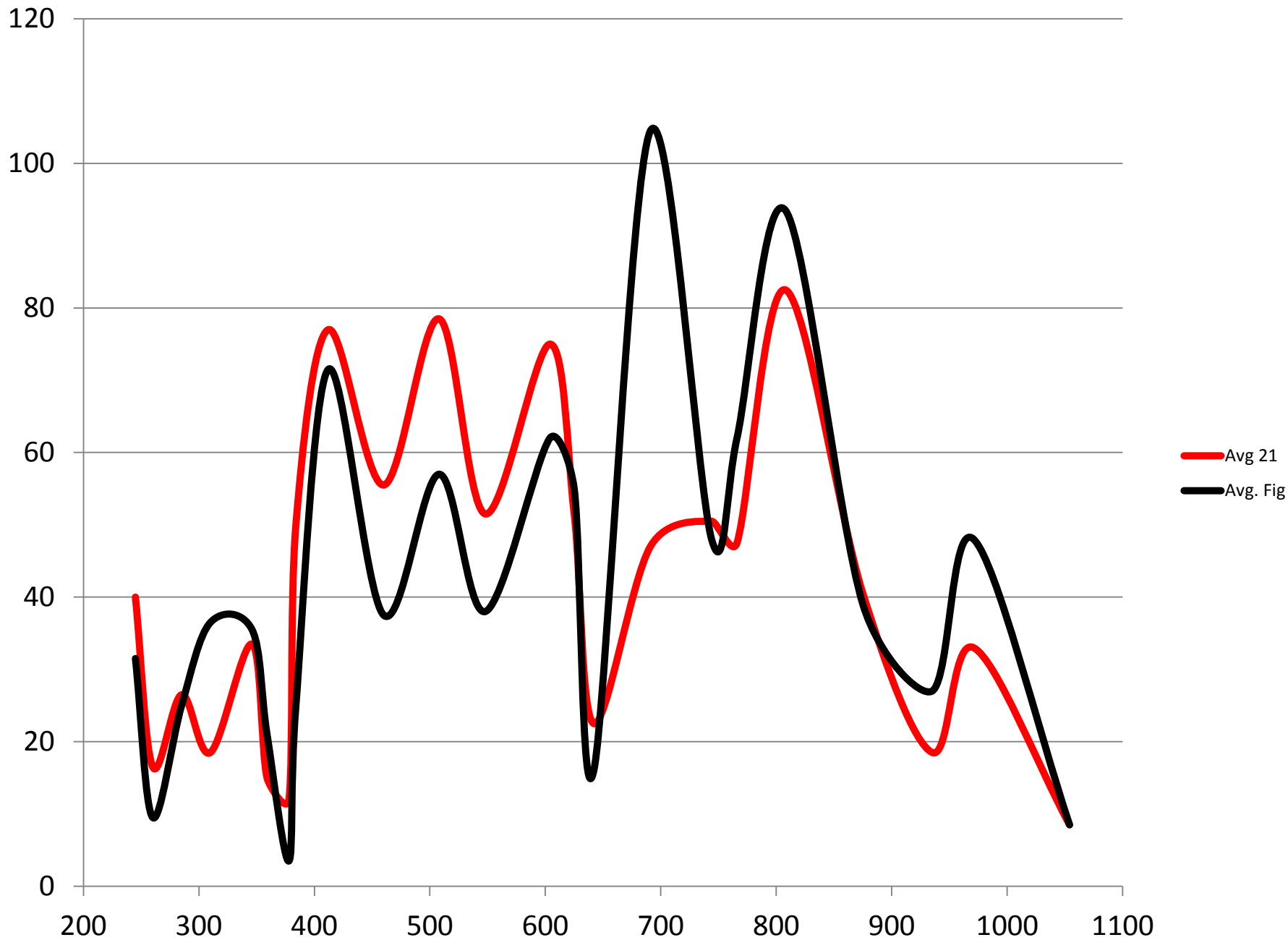


Life on
the
Interface

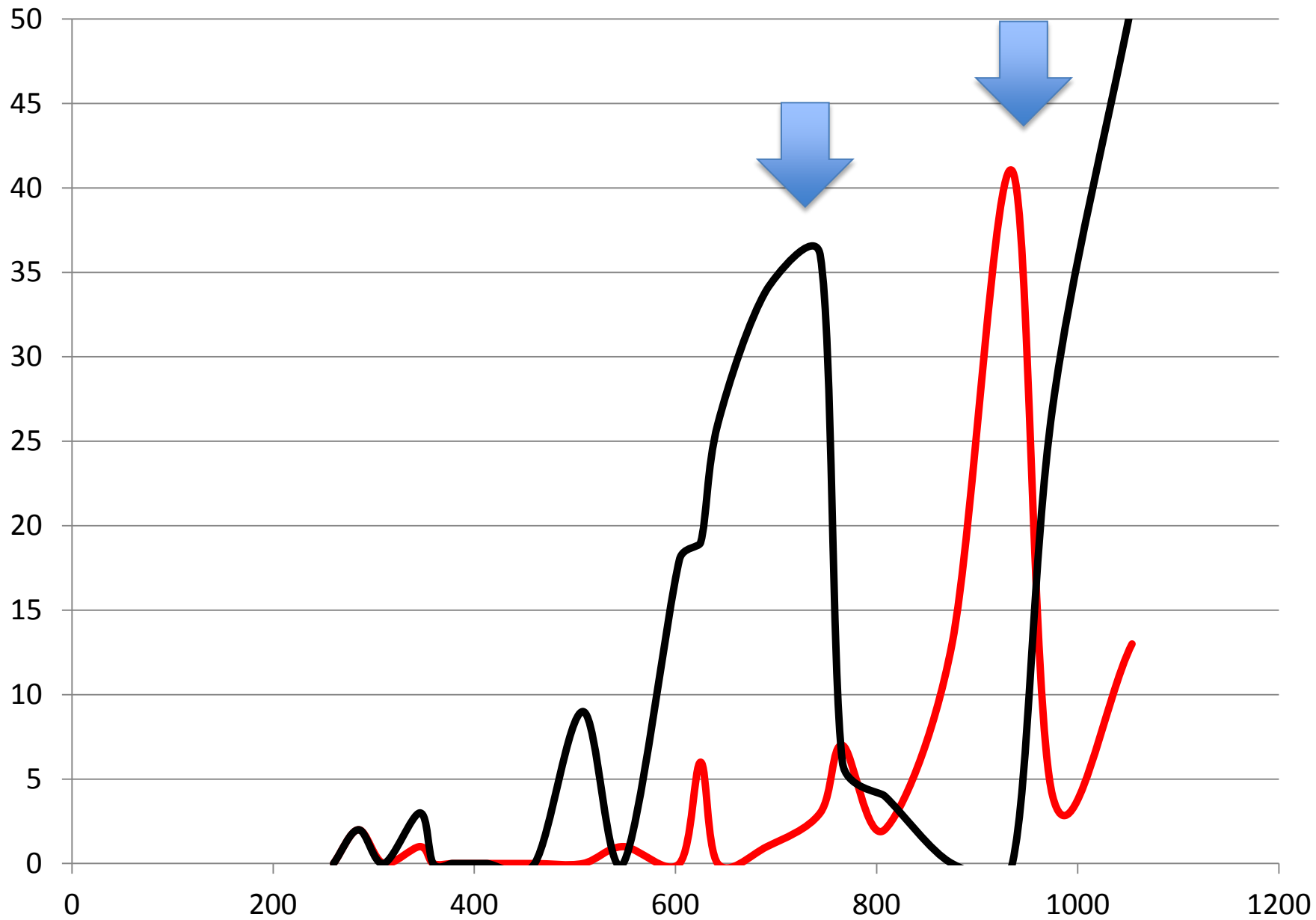


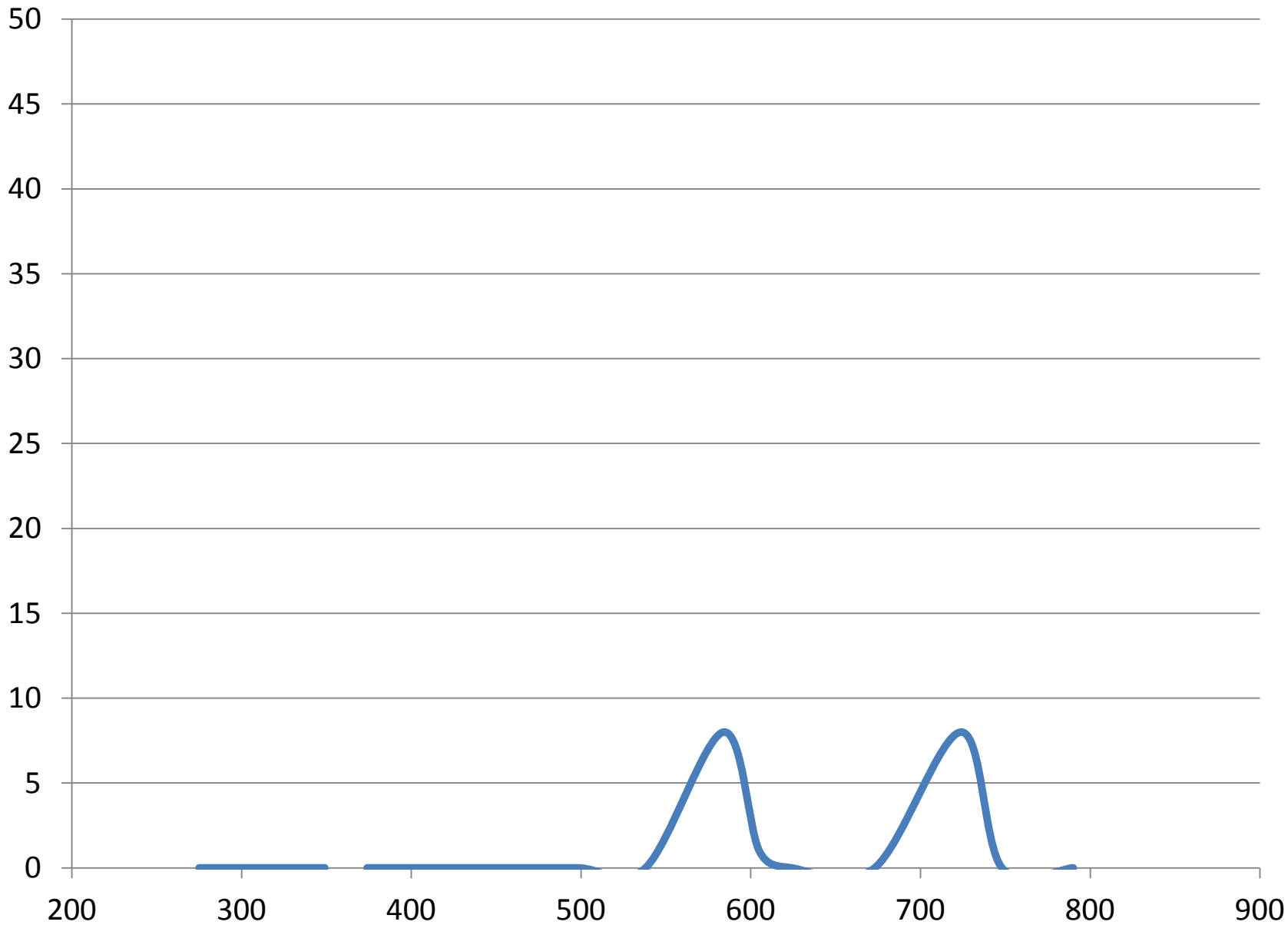


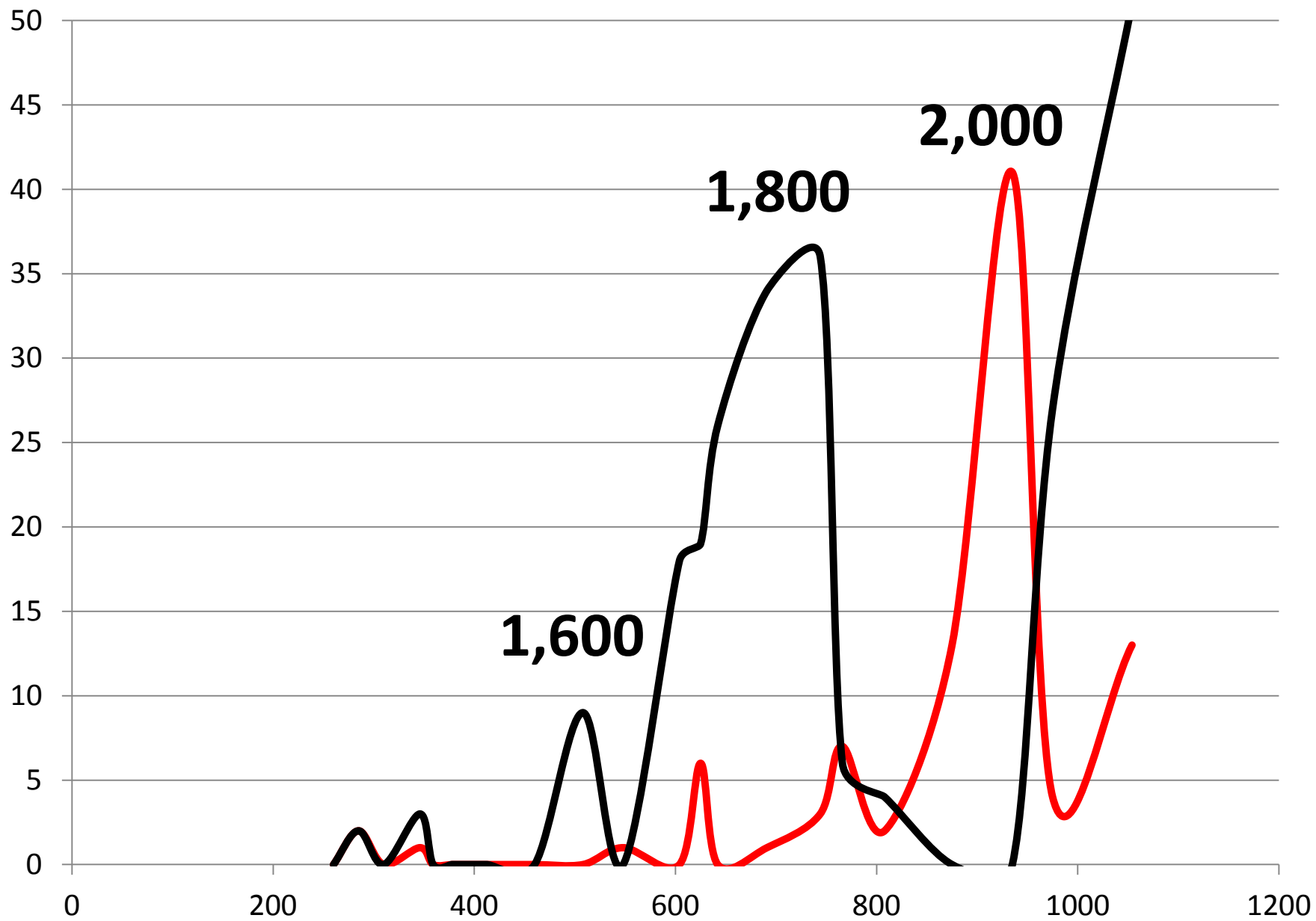




Eggs







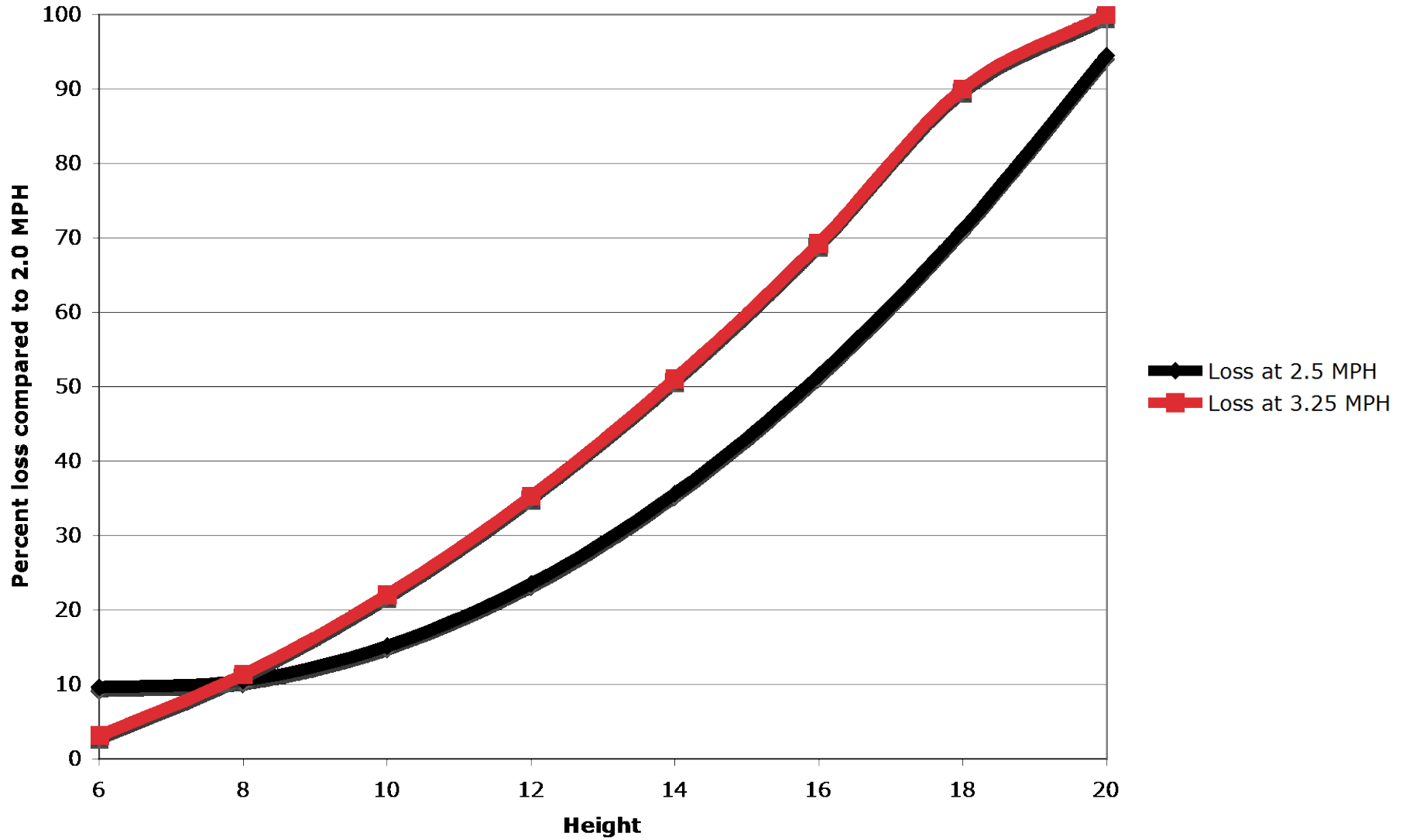
Coverage and Navel Orangeworm



Jack Dibble's Barrier

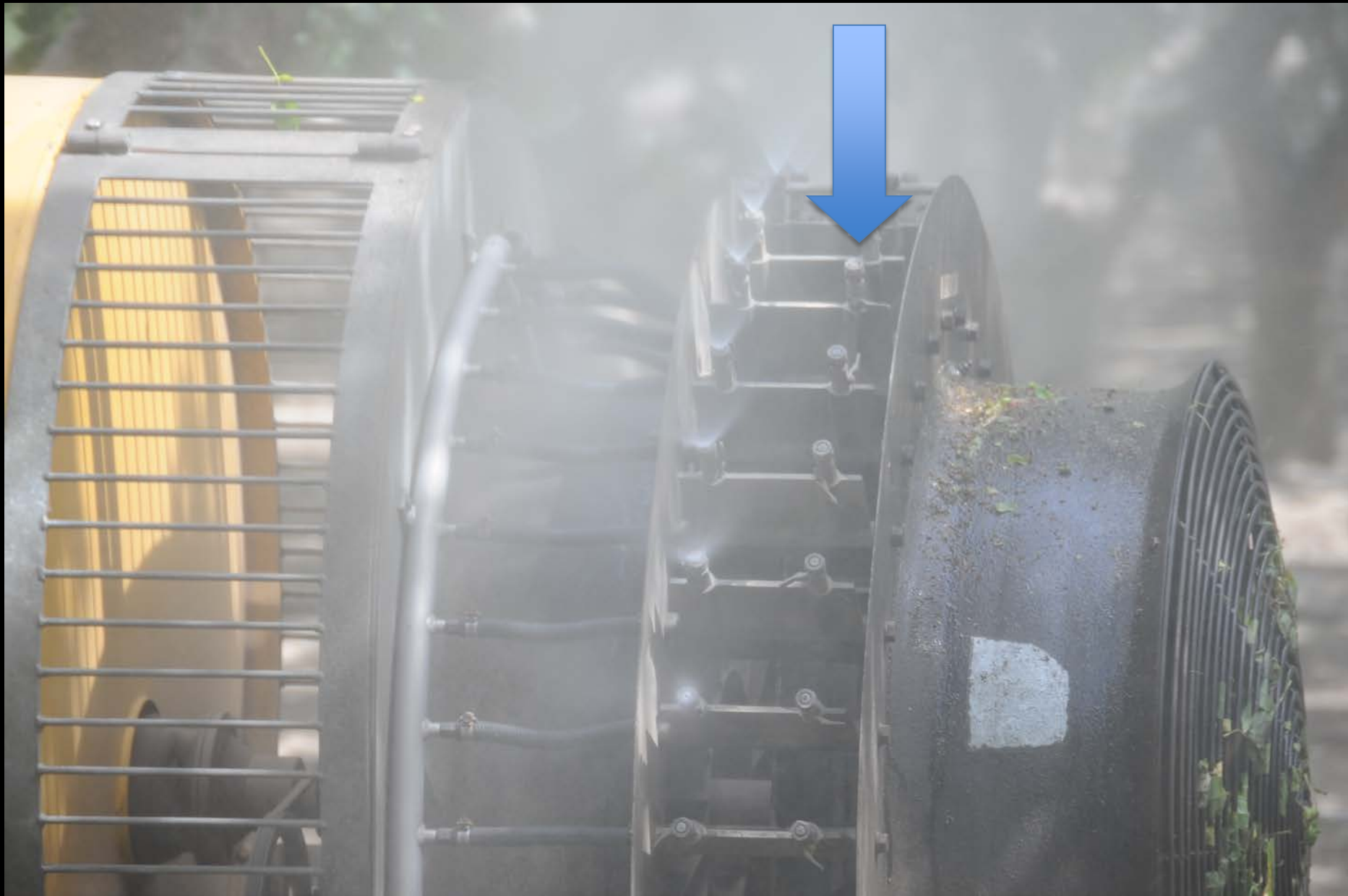
2 MPH

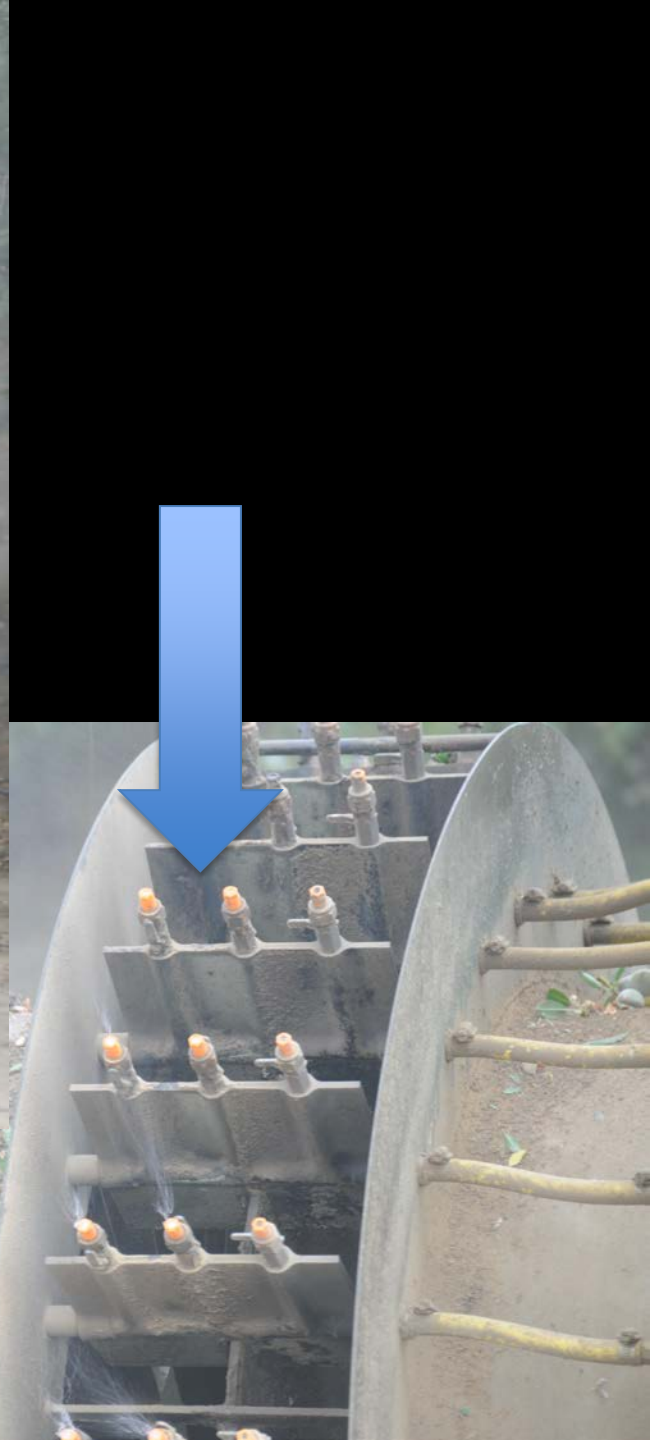
Spray reduction at 2.5, 3.25 MPH vs 2.0 MPH



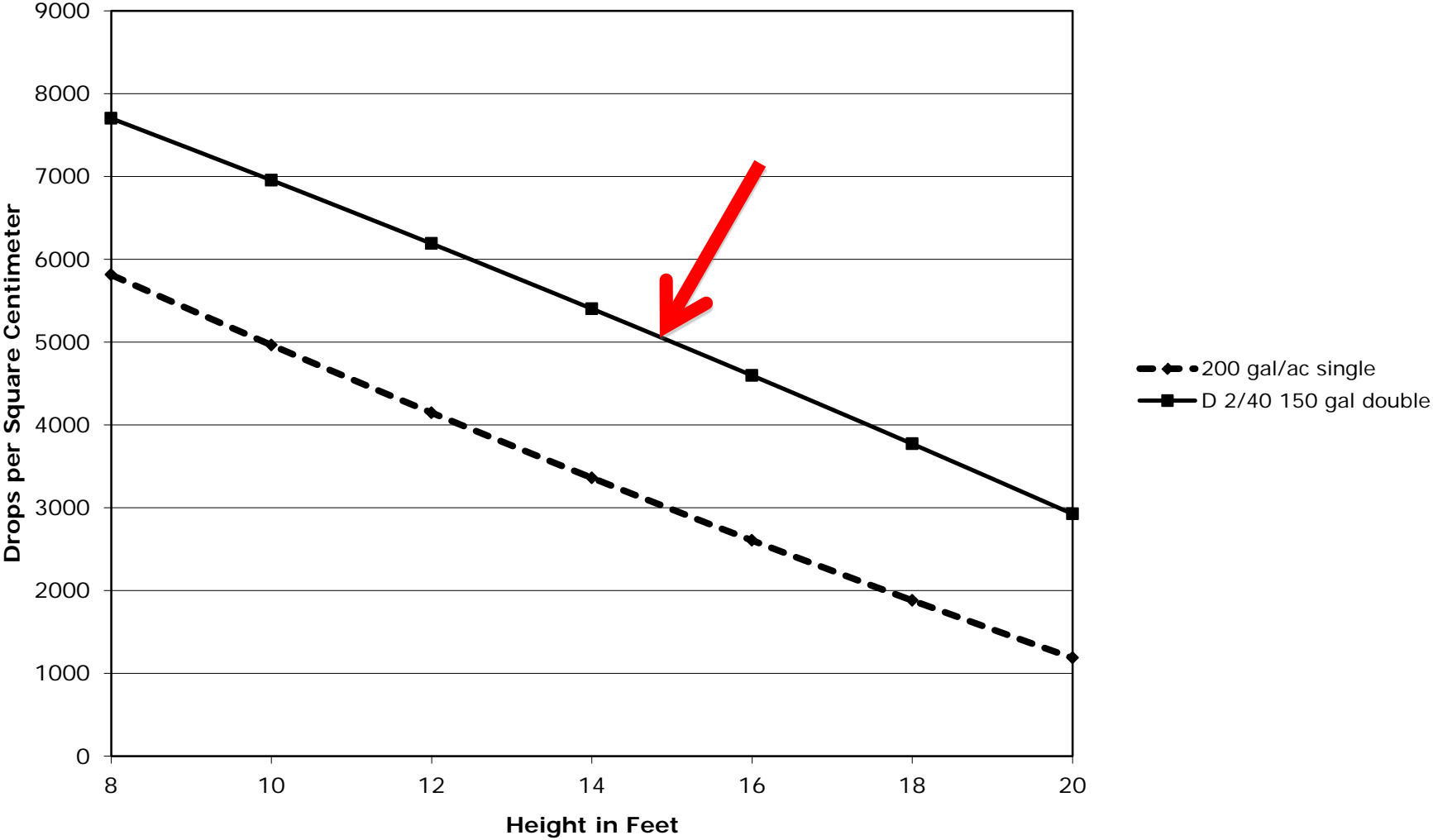
2

nozzles per vane





2 mph, PTO 200 gal/ac vs Engine Driven 150 gal/ac,
Large Almonds, Fresno County



PTO 200 gpa

Vs

Engine Driven

100 gpa




Testing this Summer





D2-40



The future
will be better
tomorrow

Dan Quayle