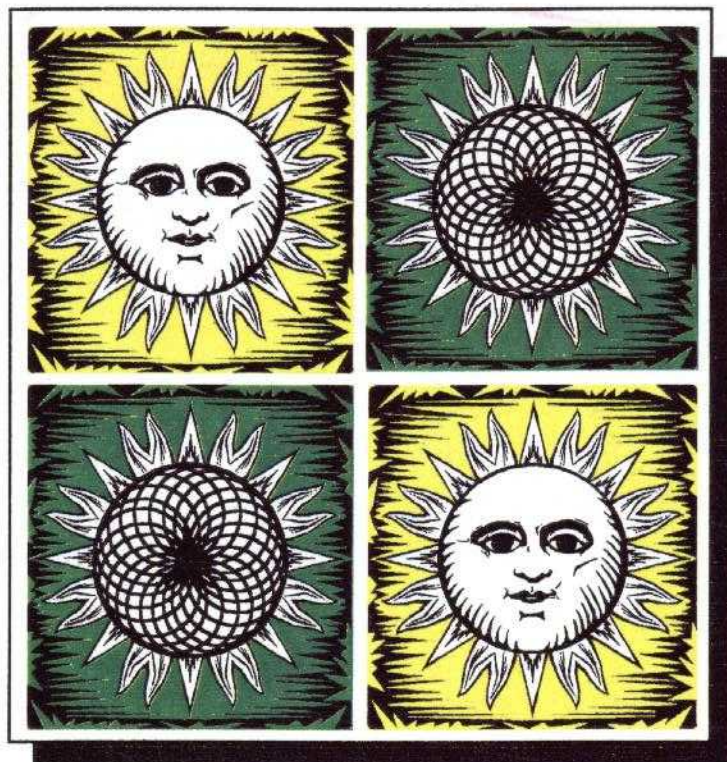


**DROUGHT RESISTANT PLANTS
FOR
MONTEREY COUNTY**



**MONTEREY COUNTY
PLANNING AND BUILDING INSPECTION DEPARTMENT**

NOVEMBER 1998



Introduction

The purpose of this guide is to assist Monterey County residents in selecting landscape plants which are water-conserving, ornamental and low maintenance. The plants listed in this guide include California natives and others from areas of the world with Mediterranean-type climates with long dry periods. Some have very low water needs and, once established, require little or no summer watering. Others require some summer watering after established, and are referred to in this guide as having "moderate" water needs, however all plants in this list are considered to be "drought resistant".

The county has been divided into four plant environment areas (see map): coastal, coastal foothills, inland valleys and inland foothills and columns 15 through 18 in the guide indicate which plants are suitable for each area. These areas are a general guide for plant selection, however many factors can influence a plants suitability for a particular site. Factors to consider when choosing a plant for a specific site are:

Micro-climate: Each individual site has its own micro-climate determined by local topography and includes factors such as sun/shade, temperature, wind and amount of moisture in soil and air.

Soil: acidity or alkalinity, texture, and drainage are important considerations when choosing a plant. Information on soil types and characteristics can be obtained from the USDA Resource Conservation District at the following locations:

Monterey Coast
USDA Resource Conservation Dist.
635 Sanborn Place, Suite 7
Salinas, CA 93901
(408) 424-1036


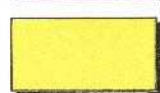

Gabilan- Santa Lucia
USDA Resource Conservation Dist.
522 North Second St.
King City, CA 93930
(408) 385-5545

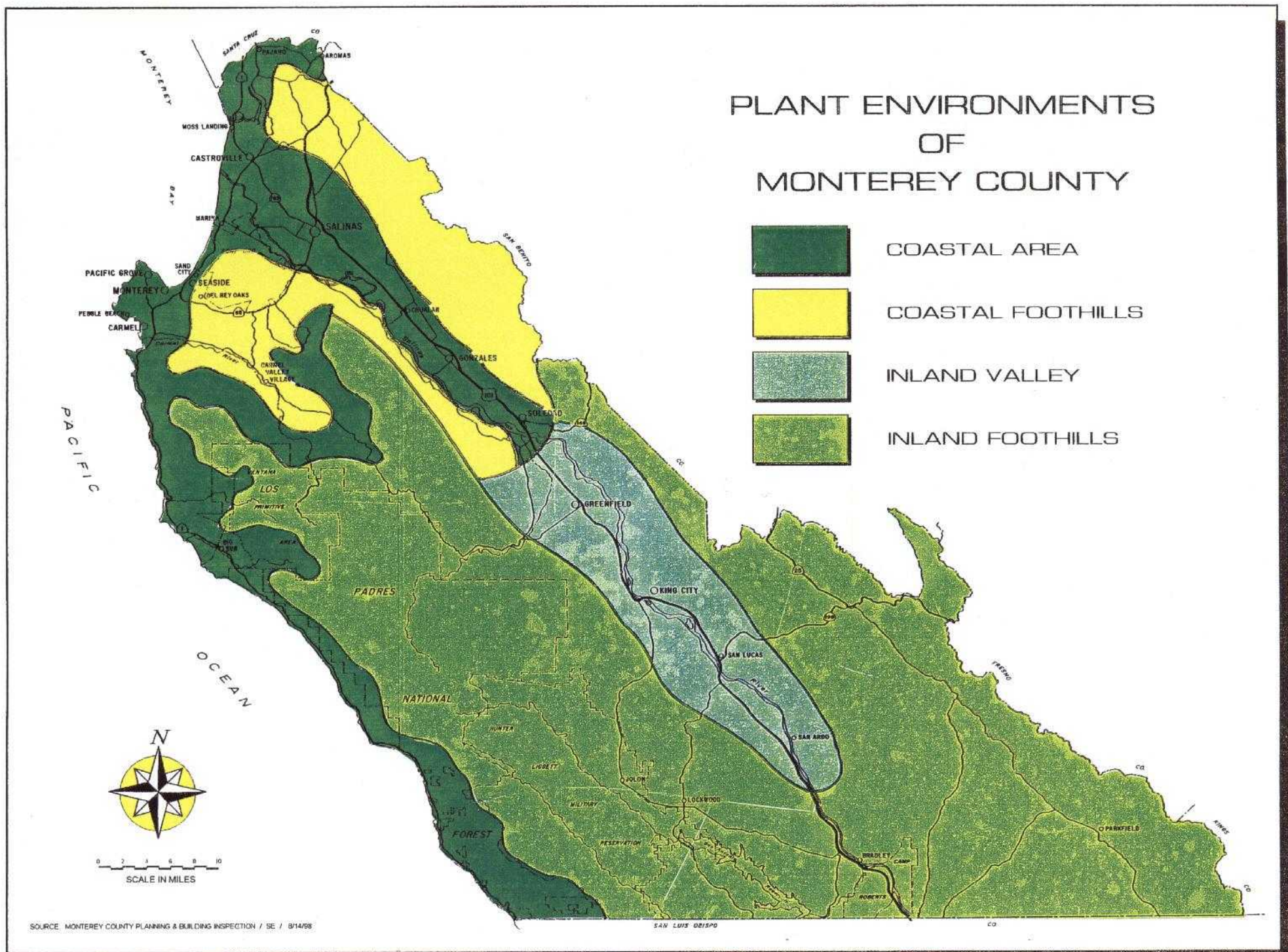
Plant features: This guide will assist in selecting plants for various purposes and features, including erosion control, deer resistance, plants that do well at the sea coast, fire resistance, flowering, wind resistance, screening, and landscaping around established oaks.

Key Contributors

Elena Freeman, Landscape Consultant
Steve Early, Planning Graphics Supervisor
Monterey County Planning and Building Inspection Department

PLANT ENVIRONMENTS OF MONTEREY COUNTY

-  COASTAL AREA
-  COASTAL FOOTHILLS
-  INLAND VALLEY
-  INLAND FOOTHILLS



DROUGHT RESISTANT PLANTS FOR MONTEREY COUNTY

LARGE TREES

	Botanical Name	Common Name	1	2	3	4	5	6	7	8	9	10	11	12	13	14	15	16	17	18	19	20	21	22
			Height at maturity	Speed of Growth	Evergreen	Deciduous	Good for the sea coast	Wind resistant	Flowering	Native to California	Native to Monterey Co.	Deer resistant	Erosion control	Screening	Fire resistant	Landscaping around oaks	Coastal area (see map)	Coastal foothills (see map)	Inland valley (see map)	Inland foothills (see map)	Very low water needs	Low water needs	Moderate water needs	Comments
1	<i>Aesculus californica</i>	California Buckeye	40'+			●			●	●	●						●	●	●	●	●			
2	<i>Agonis flexuosa</i>	Peppermint Tree	40'	Fast	●		●	●									●	●	●	●	●			
3	<i>Ailanthus altissima</i>	Tree of Heaven	to 50'	Fast		●		●									●	●	●	●	●			
4	<i>Alnus cordata</i>	Italian Alder	20-40'	Fast		●											●	●	●	●	●		●	
5	<i>Angophora costata</i>	Gum Myrtle	to 40'		●				●								●	●	●	●	●			
6	<i>Araucaria araucana</i>	Monkey Puzzle Tree	70-90'		●				●		●						●	●	●	●	●		●	
7	<i>Arbutus menziesii</i>	Madrone			●					●	●						●	●	●	●	●			
8	<i>Brachychiton acerifolius</i>	Flame Tree	to 60'			●			●								●	●	●	●	●			
9	<i>Brachychiton populneus</i>	Bottle Tree	to 40'		●			●									●	●	●	●	●		●	
10	<i>Broussonetia papyrifera</i>	Paper Mulberry	to 50'			●											●	●	●	●	●		●	
11	<i>Calocedrus decurrens</i>	Incense Cedar	to 80'		●			●		●		●					●	●	●	●	●		●	
12	<i>Casuarina stricta</i>	Beefwood	20-35'		●		●	●				●					●	●	●	●	●		●	
13	<i>Catalpa speciosa</i>	Western Catalpa	40-70'			●			●								●	●	●	●	●		●	
14	<i>Cedrus atlantica</i>	Atlas Cedar	to 60'	Slow	●						●						●	●	●	●	●		●	
15	<i>Cedrus deodora</i>	Deodar Cedar	30-50'		●						●	●					●	●	●	●	●		●	
16	<i>Celtis australis</i>	European Hackberry	30-40'			●		●				●					●	●	●	●	●		●	
17	<i>Celtis occidentalis</i>	Common Hackberry	to 50'			●		●									●	●	●	●	●		●	
18	<i>Ceratonia siliqua</i>	Carob Tree	20-40'		●						●		●	●			●	●	●	●	●		●	
19	<i>Chorisia speciosa</i>	Floss Silk Tree	30-60'		●				●								●	●	●	●	●		●	
20	<i>Ginkgo biloba</i>	Maidenhair Tree	30-50'			●					●						●	●	●	●	●		●	
21	<i>Gleditsia triacanthos</i>	Honey Locust	35-50'			●						●					●	●	●	●	●		●	
22	<i>Grevillea robusta</i>	Silk Oak	50-60'		●				●								●	●	●	●	●		●	
23	<i>Hoheria populnea</i>	New Zealand Lacey	50-60'		●				●								●	●	●	●	●		●	
24	<i>Juglans hindsii</i>	Calif. Black Walnut	30-60'			●				●							●	●	●	●	●		●	
25	<i>Juniperus californica</i>	Calif. Juniper	to 40'		●												●	●	●	●	●		●	
26	<i>Juniperus occidentalis 'Glauc'</i>	Sierra Juniper	50-60'		●												●	●	●	●	●		●	
27	<i>Koelreuteria paniculata</i>	Golden Rain Tree	20-30'			●		●	●								●	●	●	●	●		●	
28	<i>Lithocarpus densiflora</i>	Tanbark Oak	40-80'		●				●	●	●		●				●	●	●	●	●		●	
29	<i>Lyonothamnus floribundus</i>	Catalina Ironwood	30-60'		●					●							●	●	●	●	●		●	
30	<i>Maytenus boaria</i>	Mayten Tree	30-50'	Slow	●						●						●	●	●	●	●		●	
31	<i>Morus alba 'Stribling'</i>	White Mulberry	20-60'			●											●	●	●	●	●		●	
32	<i>Pinus radiata</i>	Monterey Pine	30-90'	Fast	●		●			●	●						●	●	●	●	●		●	
33	<i>Pistacia chinensis</i>	Chinese Pistache	30-50'			●											●	●	●	●	●		●	
34	<i>Pittosporum undulatum</i>	Victorian Box	30-40'		●												●	●	●	●	●		●	
35	<i>Podocarpus gracillior</i>	Fern Pine	to 60'		●												●	●	●	●	●		●	
36	<i>Podocarpus macrophyllus</i>	Yew Pine	to 50'		●						●						●	●	●	●	●		●	
37	<i>Populus fremontii</i>	Fremont Cottonwood	40-60'	Fast		●											●	●	●	●	●		●	
38	<i>Pseudotsuga menziesii</i>	Douglas Fir	70-250'		●					●		●					●	●	●	●	●		●	
39	<i>Quercus agrifolia</i>	Coast. Live Oak	20-70'		●					●	●	●		●			●	●	●	●	●		●	see photo pg. 11
40	<i>Quercus ilex</i>	Holly Oak	40-70'		●			●			●		●				●	●	●	●	●		●	
41	<i>Quercus kelloggii</i>	Black Oak	30-50'			●				●		●					●	●	●	●	●		●	
42	<i>Robinia ambigua 'Idahoensis'</i>	Idaho Locust	to 40'			●			●								●	●	●	●	●		●	
43	<i>Schinus molle</i>	Calif. Pepper	25-40'		●					●		●					●	●	●	●	●		●	
44	<i>Umbellularia californica</i>	Calif. Bay	75'		●					●	●	●	●	●			●	●	●	●	●		●	

DROUGHT RESISTANT PLANTS FOR MONTEREY COUNTY

SMALL TREES

	Botanical Name	Common Name	1 Height at maturity	2 Speed of Growth	3 Evergreen	4 Deciduous	5 Good for the sea coast	6 Wind resistant	7 Flowering	8 Native to California	9 Native to Monterey Co.	10 Deer resistant	11 Erosion control	12 Screening	13 Fire resistant	14 Landscaping around oaks	15 Coastal area (see map)	16 Coastal foothills (see map)	17 Inland valley (see map)	18 Inland foothills (see map)	19 Very low water needs	20 Low water needs	21 Moderate water needs	22 Comments
1	<i>Adenostema sparsifolium</i>	Red Shanks	6-20'		●			●	●							●	●	●		●				
2	<i>Albizia julibrissin</i>	Silk Tree	10'-40'	Fast		●		●								●	●	●	●		●			
3	<i>Arbutus unedo</i>	Strawberry Tree	8-35'	Slow	●		●							●		●	●	●			●			
4	<i>Arctostaphylos manzanita</i>	Common Manzanita	6-20'		●				●							●	●	●	●		●			
5	<i>Carpinus betulus</i>	European Hornbeam	to 40'			●										●	●	●	●		●			
6	<i>Ceanothus 'Ray Hartman'</i>	NCN	12-20'		●				●	●						●	●	●	●		●			
7	<i>Ceanothus arboreus</i>	Felt-leaf Ceanothus	10-25'	Fast	●				●	●						●	●	●	●	●				
8	<i>Ceanothus thrysiflorus</i>	Blue Blossom	6-20'		●				●	●						●	●	●	●		●			
9	<i>Cercidium floridum</i>	Blue Palo Verde	15-25'			●			●	●							●	●	●		●			
10	<i>Cercis occidentalis</i>	Western Redbud	10-18'			●			●					●		●	●	●	●		●			
11	<i>Chitalpa tashkentensis</i>	Chitalpa	20'	fast		●										●	●	●	●		●			
12	<i>Comarostaphylis diversifolia</i>	Mountain Mahogany	6-18'		●				●							●	●	●	●	●				
13	<i>Cotinus coggyria</i>	Smoke Tree	25'			●			●								●	●	●		●			
14	<i>Crataegus phaenopyrum</i>	Washington Thorn	25'			●			●		●					●	●	●	●			●		
15	<i>Cupressocyparis leylandii</i>	Leylandii Cypress	20'	Fast	●		●									●	●	●	●			●		
16	<i>Cupressus gowenia</i>	Gowen's Cypress	15-25'		●		●		●	●	●					●	●	●	●			●		
17	<i>Dracaena draco</i>	Dragon Tree	to 20'		●											●					●			
18	<i>Eleagnus angustifolia</i>	Russian Olive	to 20'			●	●	●											●	●		●		
19	<i>Eriobotrya japonica</i>	Loquat	15-30'		●											●	●	●	●		●			
20	<i>Geijera parvifolia</i>	Australian Willow	15-20'		●											●	●	●				●		
21	<i>Hakea laurina</i>	Sea Urchin	to 30'		●		●									●	●	●			●			
22	<i>Ilex altacalarensis 'Wilsonii'</i>	Wilson Holly	6-20'		●			●			●					●	●	●	●		●			
23	<i>Ilex aquifolium</i>	English Holly	to 40'	Slow	●						●					●	●	●	●		●			
24	<i>Lagerstroemia indica</i>	Crape Myrtle	6-30'			●			●								●	●	●	●		●		
25	<i>Laurus nobilis</i>	Grecian Laurel	12-40'	Slow	●								●			●	●	●	●		●			
26	<i>Lysiloma thornberi</i>	Feather Bush	12'		●											●	●	●			●			
27	<i>Malus species</i>	Ornamental Crabapple	6-30'			●			●							●	●	●	●			●		
28	<i>Melaleuca amillarlis</i>	Drooping Melaleuca	15-30'		●		●				●		●			●	●	●	●		●			
29	<i>Melaleuca elliptica</i>	NCN	8-15'		●				●							●	●	●	●		●			
30	<i>Melaleuca ericifolia</i>	Heath Melaleuca	10-25'		●		●	●	●			●				●	●	●	●		●			
31	<i>Melaleuca linarifolia</i>	Flaxleaf Paperbark	to 25'		●				●							●	●	●	●		●			
32	<i>Metrosideros excelsus</i>	New Zealand Christmas Tree	to 30'		●		●	●							●	●	●				●			
33	<i>Myrica californica</i>	Pacific Wax Myrtle	10-30'		●				●	●			●			●	●	●	●		●			
34	<i>Olea europaea</i>	Olive	10-30'		●			●			●				●	●	●	●	●		●			
35	<i>Parkinsonia aculeata</i>	Jerusalem Thorn	15-30'			●		●								●	●	●	●		●			
36	<i>Pittosporum crassifolium</i>	Karo Tree	to 25'		●		●	●								●	●	●	●			●		
37	<i>Prunus caroliniana</i>	Carolina Laurel Cherry	20-40'		●											●	●	●	●		●			
38	<i>Prunus cerasifera 'atropurpurea'</i>	Purple Leaf Plum	25-30'			●										●	●	●	●		●			see photo pg. 11
39	<i>Prunus lusitanica</i>	Portugal Laurel	10-20'		●			●	●							●	●	●	●		●			
40	<i>Sophora japonica</i>	Japanese Pagoda Tree	to 20'			●										●	●	●	●		●			
41	<i>Tristania laurina</i>	Swamp Myrtle	15'		●				●							●	●					●		
42	<i>Vitex agnus-castus</i>	Chaste Tree	6-25'			●			●							●	●	●	●		●			
43	<i>Zizyphus jujuba</i>	Chinese Jujube	20-30'	Slow	●											●	●				●			

1 2 3 4 5 6 7 8 9 10 11 12 13 14 15 16 17 18 19 20 21 22

DROUGHT RESISTANT PLANTS FOR MONTEREY COUNTY

LARGE SHRUBS

	Botanical Name	Common Name	1 Height at maturity	2 Speed of Growth	3 Evergreen	4 Deciduous	5 Good for the sea coast	6 Wind resistant	7 Flowering	8 Native to California	9 Native to Monterey Co.	10 Deer resistant	11 Erosion control	12 Screening	13 Fire resistant	14 Landscaping around oaks	15 Coastal area (see map)	16 Coastal foothills (see map)	17 Inland valley (see map)	18 Inland foothills (see map)	19 Very low water needs	20 Low water needs	21 Moderate water needs	22 Comments
1	<i>Adenostema fasciculatum</i>	Chamise	to 12'		●		●		●					●		●	●	●	●	●				
2	<i>Alyogyne huegii</i>	Blue Hibiscus	5-8'		●			●								●	●					●		
3	<i>Arbutus unedo 'compacta'</i>	Strawberry Tree	5'		●								●			●	●	●	●	●		●		
4	<i>Arctostaphylos densiflora</i>	Vinehill Manzanita	5-6'		●				●							●	●	●	●	●				
5	<i>Arctostaphylos pajaroensis</i>	Pajaro Manzanita	3-8'		●				●	●					●	●	●	●	●	●		●		
6	<i>Atriplex lentiformis breweri</i>	Brewer Saltbush	5-7'		●		●		●	●		●				●	●	●	●	●	●			
7	<i>Azara microphylla</i>	Boxleaf Azara	12-18'		●											●	●	●				●		Shade
8	<i>Berberis darwinii</i>	Darwin Barberry	5-10'		●		●	●			●					●	●	●	●	●		●		see photo pg. 11
9	<i>Caesalpinia spp.</i>	Bird of Paradise Bush	to 10'			●											●	●				●		
10	<i>Calliandra tweedii</i>	Brazilian Flame Bush	6-8'		●				●							●	●					●		
11	<i>Callistemon citrinus</i>	Lemon Bottlebrush	10-25'	Fast	●			●	●				●			●	●	●	●	●		●		see photo pg. 11
12	<i>Callistemon viminalis</i>	Weeping Bottlebrush	20-30'	Fast	●			●	●							●	●	●	●	●		●		
13	<i>Calycanthus occidentalis</i>	Western Spice Bush	4-12'		●	●			●	●						●	●	●	●	●		●		
14	<i>Carissa grandiflora</i>	Natal Plum	5-7'	Fast	●		●	●	●				●	●		●	●					●		
15	<i>Catha edulis</i>	Khat	8-20'		●		●	●								●	●					●		
16	<i>Ceanothus 'Frosty Blue'</i>	NCN	6-9'		●				●				●			●	●	●	●	●	●			
17	<i>Ceanothus 'Ray Hartman'</i>	NCN	12-20'		●				●				●			●	●	●	●	●	●			
18	<i>Ceanothus impressus</i>	Santa Barbara Ceanothus	6-9'		●			●	●	●		●				●	●	●	●	●	●			
19	<i>Ceanothus thryssiflorus</i>	Blue Blossom	6-21'		●		●	●	●	●		●	●			●	●	●	●	●	●			
20	<i>Cercis occidentalis</i>	Western Redbud	10-18'			●		●	●	●					●	●	●	●	●	●				
21	<i>Cercocarpus betuloides</i>	Mountain Mahogany	5-12'		●										●	●	●	●	●	●				
22	<i>Chaenomeles spp.</i>	Flowering Quince	3-6'			●			●		●					●	●	●	●	●		●		
23	<i>Chamaelium uncinatum</i>	Geraldton Waxflower	6-12'		●				●							●	●	●	●	●		●		
24	<i>Chimonanthus praecox</i>	Wintersweet	10-15'			●			●							●	●	●	●	●		●		
25	<i>Cistus purpureus</i>	Orchid Spot Rockrose	2-6'	Fast	●		●	●	●		●					●	●	●	●	●		●		
26	<i>Comarostaphylis diversifolia</i>	Summer Holly	6-8'		●				●						●	●	●	●	●	●	●			
27	<i>Cotoneaster lacteus</i>	Red Clusterberry	6-8'		●		●	●			●	●	●			●	●	●	●	●	●			
28	<i>Daphne odorata</i>	Winter Daphne	4-6'		●				●		●					●	●	●	●	●		●		
29	<i>Dendromecon harfordii</i>	Island Bush Poppy	10-20'		●				●	●	●		●			●	●	●	●	●	●			
30	<i>Dodonea viscosa</i>	Hopseed Bush	10-15'		●		●	●			●		●			●	●	●	●	●		●		see photo pg. 11
31	<i>Echium fastuosum</i>	Pride of Madeira	6-10'		●		●	●	●			●				●	●					●		
32	<i>Eleagnus pungens</i>	Silverberry	6-15'		●		●	●								●	●	●	●	●	●			
33	<i>Escallonia varieties</i>	NCN	3-25'		●			●	●		●		●	●		●	●	●	●	●	●		●	
34	<i>Euonymus japonica</i>	Evergreen Euonymus	8-10'		●			●			●		●			●	●	●	●	●	●			
35	<i>Fallugia paradoxa</i>	Apache plume	3-8'		●				●	●		●				●	●	●	●	●	●			
36	<i>Feijoa sellowiana</i>	Pineapple guava	18-25'		●				●		●		●			●	●	●	●	●	●			
37	<i>Forsythia x intermedia</i>	Forsythia	Varies			●										●	●	●	●	●	●			
38	<i>Fremontodendron californicum</i>	Flannel Bush	6-20'	Fast	●				●	●	●	●	●			●	●	●	●	●	●			
39	<i>Garrya elliptica</i>	Coast Silktassel	to 10'		●			●	●	●	●	●	●	●	●	●	●	●	●	●	●			
40	<i>Garrya fremontii</i>	Fremont Silktassel	4-8'		●				●	●	●				●	●	●	●	●	●	●			
41	<i>Grevillea lanigera</i>	Wooly Grevillea	3-6'		●				●		●					●	●					●		
42	<i>Grevillea rosmarinifolia</i>	Rosemary Grevillea	to 6'		●				●		●					●	●	●	●	●	●			
43	<i>Hakea suaveolens</i>	Sweet Hakea	10-20'		●		●	●			●		●			●	●	●	●	●	●			
44	<i>Heteromeles arbutifolia</i>	Toyon	6-25'		●		●	●	●	●	●	●	●	●	●	●	●	●	●	●	●			see photo pg. 11

1 2 3 4 5 6 7 8 9 10 11 12 13 14 15 16 17 18 19 20 21 22

DROUGHT RESISTANT PLANTS FOR MONTEREY COUNTY

LARGE SHRUBS

Botanical Name	Common Name	1 Height at maturity	2 Speed of Growth	3 Evergreen	4 Deciduous	5 Good for the sea coast	6 Wind resistant	7 Flowering	8 Native to California	9 Native to Monterey Co.	10 Deer resistant	11 Erosion control	12 Screening	13 Fire resistant	14 Landscaping around oaks	15 Coastal area (see map)	16 Coastal foothills (see map)	17 Inland valley (see map)	18 Inland foothills (see map)	19 Very low water needs	20 Low water needs	21 Moderate water needs	22 Comments	
45 <i>Hibiscus syriacus</i>	Rose of Sharon	10-12'			●			●																
46 <i>Ilex altacalarensis 'wilsonii'</i>	Wilson Holly	6-20'		●								●				●	●	●	●			●		
47 <i>Jasminum humile</i>	Italian Jasmine	10'		●				●								●	●	●				●		
48 <i>Kerria japonica</i>	Kerria	to 8'		●				●			●					●	●	●	●			●		Shade
49 <i>Lavatera assurgentifolia</i>	Tree Mallow	to 12'	Fast	●		●			●		●					●	●	●	●			●		see photo pg. 11
50 <i>Leptospermum laevigatum</i>	Australian Tea Tree	to 20'		●		●	●	●			●					●	●	●	●			●		
51 <i>Leptospermum scoparium</i>	New Zealand Tea Tree	2-20'		●		●	●	●			●					●	●	●	●			●		see photo pg. 11
52 <i>Leucophyllum frutescens</i>	Texas Ranger	5-12'		●			●					●				●	●	●	●			●		
53 <i>Lupinus albifrons</i>	Silver Bush Lupine	2-6'			●			●	●						●		●	●	●			●		
54 <i>Lupinus arboreus</i>	Yellow Bush Lupine	5-8'			●	●	●	●	●	●						●	●	●	●			●		
55 <i>Lupinus chamissonis</i>	Purple Bush Lupine				●	●			●	●						●	●					●		
56 <i>Mahonia nervosa</i>	Longleaf Mahonia	2-6'		●					●							●	●	●	●			●		
57 <i>Mahonia pinnata</i>	California Grape Holly	4-5'		●					●	●	●		●			●	●	●	●			●		
58 <i>Melianthus major</i>	Honeybush	2-6'		●												●	●	●	●			●		
59 <i>Myrsine africana</i>	African Boxwood	3-8'		●		●										●	●	●	●			●		
60 <i>Myrtus communis cultivars</i>	NCN	6-15'		●								●				●	●	●	●			●		
61 <i>Nandina domestica</i>	Heavenly Bamboo	6-8'		●		●	●			●		●				●	●	●	●			●		see photo pg. 12
62 <i>Nerium oleander</i>	Oleander	8-12'			●	●	●	●			●		●			●	●	●	●			●		
63 <i>Ochna serrulata</i>	Bird's Eye Bush	4-8'	Slow	●		●		●								●	●	●	●			●		
64 <i>Osmanthus fragrans</i>	Sweet Olive	to 10'		●				●			●					●	●	●	●			●		
65 <i>Osmanthus heterophyllus</i>	Hollyleaf Osmanthus	4-8'		●				●								●	●	●	●			●		
66 <i>Philadelphus mexicanus</i>	Mock Orange	3-8'		●				●								●	●	●	●			●		
67 <i>Phormium tenax</i>	New Zealand Flax	to 10'		●		●	●									●	●	●	●			●		
68 <i>Photinia fraseri</i>	Photinia	to 10'		●									●			●	●	●	●			●		see photo pg. 12
69 <i>Pittosporum eugeniodes</i>	Pittosporum	to 40'		●									●	●		●	●	●	●			●		
70 <i>Pittosporum tenuifolium</i>	Pittosporum	to 40'		●		●							●	●		●	●	●	●			●		
71 <i>Plumbago auriculata</i>	Cape Plumbago	6'		●												●	●	●	●			●		
72 <i>Prostanthera rotundifolia</i>	Mint Bush	4-10'		●				●								●	●	●	●			●		
73 <i>Prunus illicifolia</i>	Holly-Leaf Cherry	6-20'		●		●	●	●	●			●				●	●	●	●			●		
74 <i>Psidium littorale</i>	Lemon or Strawberry Guava	8-10'		●		●		●								●	●	●	●			●		
75 <i>Punica granatum</i>	Pomegranate	3-10'			●			●						●		●	●	●	●			●		
76 <i>Pyracantha varieties</i>	Firethorn	3-25'		●			●				●		●			●	●	●	●			●		
77 <i>Quercus dumosa</i>	California Scrub Oak	3-10'		●					●							●	●	●	●			●		
78 <i>Rhamnus alaternus</i>	Italian Buckthorn	12-20'	Fast	●		●						●	●	●	●	●	●	●	●			●		
79 <i>Rhamnus californica</i>	Coffeeberry	3-15'		●		●			●	●				●		●	●	●	●			●		
80 <i>Rhus integrifolia</i>	Lemonadeberry	3-10'		●		●			●			●				●	●	●	●			●		
81 <i>Rhus ovata</i>	Sugar Bush	2-10'		●		●			●				●			●	●	●	●			●		
82 <i>Romneya coulteri</i>	Matilija Poppy	8'			●			●	●			●				●	●	●	●			●		
83 <i>Rosa rugosa</i>	Ramanas Rose	3-8'			●	●	●	●				●				●	●	●	●			●		
84 <i>Sambucus spp.</i>	Elderberry	4-20'			●				●		●					●	●	●	●			●		
85 <i>Sarcococca ruscifolia</i>	NCN	4-6'	Slow	●				●			●					●	●	●	●			●		
86 <i>Simmondsia californica</i>	Jojoba	3-6'		●										●		●	●	●	●			●		
87 <i>Symphoricarpos albus</i>	Snowberry	2-6'			●						●		●			●	●	●	●			●		
88 <i>Syzygium paniculatum</i>	Brush Cherry	30-60'		●												●	●	●	●			●		
89 <i>Vaccinium ovatum</i>	Evergreen Huckleberry	2-10'			●				●	●						●	●	●	●			●		
90 <i>Viburnum odoratissimum</i>	NCN	10-20'		●												●	●	●	●			●		
91 <i>Viburnum suspensum</i>	Sandankwa Viburnum	8-10'		●							●					●	●	●	●			●		
92 <i>Viburnum tinus</i>	Laurustinus	6-12'		●							●					●	●	●	●			●		
93 <i>Xylosma congestum</i>	NCN	8-10'		●			●	●					●	●		●	●	●	●			●		see photo pg. 12
94 <i>Yucca aloifolia</i>	Spanish Bayonet	10'	Slow	●							●					●	●	●	●			●		
95 <i>Yucca whipplei</i>	Our Lord's Candle	3-14'		●					●							●	●	●	●			●		

1 2 3 4 5 6 7 8 9 10 11 12 13 14 15 16 17 18 19 20 21 22

DROUGHT RESISTANT PLANTS FOR MONTEREY COUNTY

SMALL SHRUBS

Botanical Name	Common Name	1 Height at maturity	2 Speed of Growth	3 Evergreen	4 Deciduous	5 Good for the sea coast	6 Wind resistant	7 Flowering	8 Native to California	9 Native to Monterey Co.	10 Deer resistant	11 Erosion control	12 Screening	13 Fire resistant	14 Landscaping around oaks	15 Coastal area (see map)	16 Coastal foothills (see map)	17 Inland valley (see map)	18 Inland foothills (see map)	19 Very low water needs	20 Low water needs	21 Moderate water needs	22 Comments
1 <i>Acanthus mollis</i>	Bear's Breech	2-3'		●												●	●	●					
2 <i>Anisodonteia hypomaduram</i>	Cape Mallow	to 6'		●				●								●	●	●			●		
3 <i>Arctostaphylos densiflora</i> 'Howard McMinn'	Manzanita	30"		●			●	●								●	●	●	●		●		see photo pg. 12
4 <i>Buddleia davidii</i>	Butterfly Bush	4'			●			●			●					●	●	●	●		●		
5 <i>Calliandra californica</i>	Baja Fairy Duster	3'		●				●			●					●	●	●			●		
6 <i>Calocephalus brownii</i>	Cushion Bush	3'		●		●		●								●	●	●			●		
7 <i>Carpenteria californica</i>	Bush Anemone	3-6'	Slow	●				●			●					●	●	●			●		
8 <i>Cassia artemisioides</i>	Feathery Cassia	3-5'		●				●			●					●	●				●		
9 <i>Castilleja latifolia</i>	Monterey Paintbrush	2'				●		●	●							●	●				●		
10 <i>Ceanothus 'Joyce Coulter'</i>	NCN	2-5'		●			●	●	●		●					●	●	●	●		●		
11 <i>Cerastostigmata willmottianum</i>	Chinese Plumbago	2-4'		●		●		●								●	●	●	●		●		
12 <i>Chamaelium uncinatum</i>	Geraldton Waxflower	6-12'		●				●								●	●	●			●		
13 <i>Cistus villosus 'protratus'</i>	Sageleaf Rockrose	2'		●		●	●	●			●	●				●	●	●	●		●		
14 <i>Convolvulus cneorum</i>	Bush Morning Glory	2-4'		●				●						●		●	●	●			●		
15 <i>Coprosma kirkii</i>	Mirror Plant	2-3'		●			●							●		●	●	●			●		
16 <i>Correa alba</i>	Australian Fuchsia	2-4'		●		●		●								●	●	●			●		Summer Flowers
17 <i>Correa pulchra</i>	Australian Fuchsia	2-4'		●		●		●								●	●	●			●		Winter Flowers
18 <i>Cotoneaster microphyllus</i>	Rockspray Cotoneaster	2-3'		●			●	●			●	●				●	●	●	●		●		see photo pg. 12
19 <i>Diplacus species</i>	Sticky Monkey Flower	1-4'						●	●							●	●	●			●		
20 <i>Dorycnium hirsutum</i>	NCN	to 2'		●				●								●	●	●			●		
21 <i>Eriogonum species</i>	Buckwheat	1-4'				●		●	●		●				●	●	●	●			●		
22 <i>Eriophyllum confertiflorum</i>	Golden Yarrow	1-4'				●		●	●							●	●				●		
23 <i>Eriophyllum staechadifolium</i>	Lizard Tail	1-4'				●		●	●							●	●				●		
24 <i>Euryops hybrid</i>	Yellow Bush Daisy	2-5'		●		●		●								●	●	●			●		
25 <i>Galvesia speciosa</i>	Island Bush Snapdragon	3-4'		●				●							●	●	●	●			●		
26 <i>Gautheria shallon</i>	Salal			●		●		●	●	●						●	●	●	●		●		
27 <i>Halimicistus sahucci</i>	NCN	2'		●				●								●	●	●	●		●		
28 <i>Jasminum floridum</i>	Showy Jasmine	3-4'		●				●								●	●	●	●		●		
29 <i>Juniperus conferta</i>	Shore Juniper	1'		●		●										●	●				●		see photo pg. 12
30 <i>Kniphofia uvaria</i>	Red Hot Poker	2-6'		●		●		●						●		●	●	●			●		
31 <i>Lantana montevidensis</i>	NCN	3-6'		●				●								●	●	●	●		●		
32 <i>Lavandula dentata</i>	French Lavender	3'		●				●								●	●	●	●		●		
33 <i>Leucophyllum frutescens</i>	Texas Ranger	5-12'		●				●								●	●	●	●		●		
34 <i>Limonium perezii</i>	Sea Lavender	1-2'				●		●								●	●				●		
35 <i>Pyracantha varieties</i>	NCN	3-25'		●				●			●				●	●	●	●			●		
36 <i>Raphiolepis indica varieties</i>	India Hawthorn	2-7'		●				●								●	●	●	●		●		
37 <i>Rhamnus crocea</i>	Redberry	2-3'		●				●	●						●	●	●	●			●		
38 <i>Ribes malvaceum</i>	Chaparral Currant	2'			●			●							●	●	●	●	●		●		
39 <i>Ribes sanguineum glutinosum</i>	Pink Flowering Currant	4-12'			●			●	●	●						●	●	●	●		●		
40 <i>Ribes speciosum</i>	Fuchsia Flowering Gooseberry	3-6'		●				●	●						●	●	●	●			●		
41 <i>Ribes viburnifolium</i>	Catalina Currant	3'		●		●		●		●	●			●	●	●	●	●			●		
42 <i>Rosmarinus officinalis</i>	Rosemary	2-6'		●		●	●	●			●	●				●	●	●	●		●		
43 <i>Salvia species</i>	Sage	1-2'		●	●	●		●			●				●	●	●	●			●		see photo pg. 12
44 <i>Santolina chamaecyparissus</i>	Lavender cotton	1-2'		●		●		●								●	●	●	●		●		
45 <i>Sollya heterophylla</i>	Australian Bluebell Creeper	2-3'				●		●			●					●	●	●	●		●		
46 <i>Teucrium fruticans</i>	Bush Germander	4-8'		●		●		●								●	●	●	●		●		
47 <i>Trichostema lanatum</i>	Woolly Blue Curis	3-5'		●				●	●	●						●	●	●	●		●		
48 <i>Westringia rosmariniformis</i>	NCN	3-6'		●		●	●	●			●					●	●	●	●		●		see photo pg. 12
49 <i>Zauschneria californica</i>	California Fuchsia	1-2'		●	●	●	●	●			●				●	●	●	●			●		

DROUGHT RESISTANT PLANTS FOR MONTEREY COUNTY

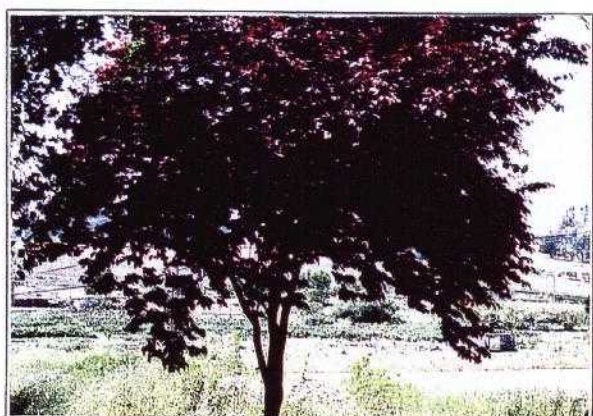
GROUND COVERS

			1	2	3	4	5	6	7	8	9	10	11	12	13	14	15	16	17	18	19	20	21	22
			Height at maturity	Speed of Growth	Evergreen	Deciduous	Good for the sea coast	Wind resistant	Flowering	Native to California	Native to Monterey Co.	Deer resistant	Erosion control	Screening	Fire resistant	Landscaping around oaks	Coastal area (see map)	Coastal foothills (see map)	Inland valley (see map)	Inland foothills (see map)	Very low water needs	Low water needs	Moderate water needs	Comments
Botanical Name	Common Name																							
1	<i>Abronia latifolia</i>	Yellow Sand Verbena	2-8'				•	•	•	•	•						•							(Dune)
2	<i>Abronia umbellata</i>	Pink Sand Verbena	2-8'				•	•	•	•	•						•							(Dune)
3	<i>Aeonium spathulium</i>	NCN			•		•								•									
4	<i>Arctostaphylos 'Emerald Carpet'</i>	NCN	9-14"		•			•									•	•	•	•				
5	<i>Arctostaphylos edmundsii</i>	Little Sur Manzanita	8-12"		•		•	•		•	•						•	•	•	•				
6	<i>Arctostaphylos hookeri</i>	Monterey Carpet Manzanita	to 12"		•			•		•	•		•				•	•	•	•				
7	<i>Arctostaphylos pumila</i>	Dune Manzanita	1-2 1/2'		•			•		•	•						•	•	•	•				(Dune)
8	<i>Arctotheca calendula</i>	Capeweed	to 12"		•		•	•	•						•		•	•	•	•				
9	<i>Arctotis hybrids</i>	African Daisy	12-18"		•		•		•								•	•	•	•				(Dune)
10	<i>Armeria maritima</i>	Sea Pink/Thrift	6-8"				•		•	•	•						•							
11	<i>Artemisia caucasia</i>	Silver Spreader	3-6"		•												•	•	•	•				
12	<i>Artemisia pycnocephala</i>	Sandhill Sage	1-2'				•			•	•						•	•	•	•				
13	<i>Asparagus sprengeri</i>	Sprenger Asparagus	1'		•		•	•				•					•	•	•	•				
14	<i>Atriplex semibaccata</i>	Australian Saltbush	1'		•		•										•	•	•	•				
15	<i>Baccharis pilularis 'Twin Peaks'</i>	Dwarf Coyote Bush	8"-24"		•		•	•		•	•						•	•	•	•				
16	<i>Bergenia crassifolia</i>	Winter Blooming Bergenia	20"		•				•								•	•	•	•				
17	<i>Camissonia cheiranthifolia</i>	Beach Primrose					•										•	•	•	•				
18	<i>Ceanothus griseus 'horizontalis'</i>	NCN	18-30"		•		•		•	•	•		•				•	•	•	•				see photo pg. 13
19	<i>Ceratostigmata plumbaginoides</i>	NCN	6-12"			•											•	•	•	•				
20	<i>Chamaemelum nobile</i>	Chamomile	3-12"		•												•	•	•	•				
21	<i>Convolvulus mauritanicus</i>	Ground Morning Glory	1-2'		•		•		•								•	•	•	•				
22	<i>Coprosma kirkii</i>	NCN	2-3'		•												•	•	•	•				
23	<i>Coprosma pumila 'Verde Vista'</i>	NCN	to 2 1/2'		•												•	•	•	•				
24	<i>Cotoneaster 'Lowfast'</i>	NCN	12"		•												•	•	•	•				
25	<i>Cotoneaster buxifolius</i>	Bright Bead Cotoneaster	1-2'		•				•								•	•	•	•				
26	<i>Cotoneaster conspicuus decorus</i>	Necklace Cotoneaster	4-6"		•												•	•	•	•				
27	<i>Cotoneaster horizontalis</i>	Rock Cotoneaster	2-3'			•											•	•	•	•				
28	<i>Cotoneaster micropyllus</i>	Rockspray Cotoneaster	2-3'		•												•	•	•	•				
29	<i>Drosanthemum floribundum</i>	Rosea Iceplant	6"		•		•		•								•	•	•	•				
30	<i>Dryopteris arguta</i>	Wood Fern	1-3'									•	•				•	•	•	•				
31	<i>Erigeron glaucus</i>	Seaside Daisy	10-12"		•				•	•	•						•	•	•	•				
32	<i>Erigeron karvinskianus</i>	Fleabane	10-12"		•				•								•	•	•	•				see photo pg. 13
33	<i>Erysimum ammodendrum</i>	Coast Wall Flower	4-6"				•		•								•	•	•	•				dune
34	<i>Fragaria chiloensis</i>	Beach Strawberry	6-12"		•		•			•	•						•	•	•	•				
35	<i>Gazania species</i>	NCN	6"		•												•	•	•	•				
36	<i>Hedera helix</i>	English Ivy			•												•	•	•	•				
37	<i>Helianthemum nummularium</i>	Sunrose	6-8"		•		•		•								•	•	•	•				
38	<i>Hypericum calycinum</i>	St. Johnswort	to 12"		•		•		•			•	•				•	•	•	•				invasive
39	<i>Lantana montevidensis</i>	Lantana	1 1/2-3'		•			•				•	•				•	•	•	•				
40	<i>Lotus scoparius</i>	Deerweed	1 to 4'		•		•			•	•						•	•	•	•				
41	<i>Mahonia repens</i>	Creeping Mahonia	to 3'		•		•		•	•			•				•	•	•	•				
42	<i>Myoporum parvifolium 'Prostratum'</i>	NCN	3"		•								•				•	•	•	•				
43	<i>Oenothera berlandieri</i>	Mexican Evening Primrose	10-12"						•								•	•	•	•				see photo pg. 13
44	<i>Osteospermum fruticosum</i>	Highway Daisy	6-12"		•		•	•	•								•	•	•	•				

DROUGHT RESISTANT PLANTS SUITABLE FOR
MONTEREY COUNTY



Quercus agrifolia - Coast Live Oak Large Tree # 39



Prunus cerasifera 'atropurpurea' - Purple Leaf Plum Small Tree # 38



Berberis darwinii - Darwin Barberry Large Shrub # 8



Callistemon citrinus - Lemon Bottlebrush Large Shrub # 11



Dodonea viscosa - Hopseed Bush Large Shrub # 30



Leptospermum scoparium - New Zealand Tea Tree Large Shrub # 51



Heteromeles arbutifolia - Toyon Large Shrub # 44



Lavatera assurgentifolia - Tree Mallow Large Shrub # 49

DROUGHT RESISTANT PLANTS SUITABLE FOR
MONTEREY COUNTY



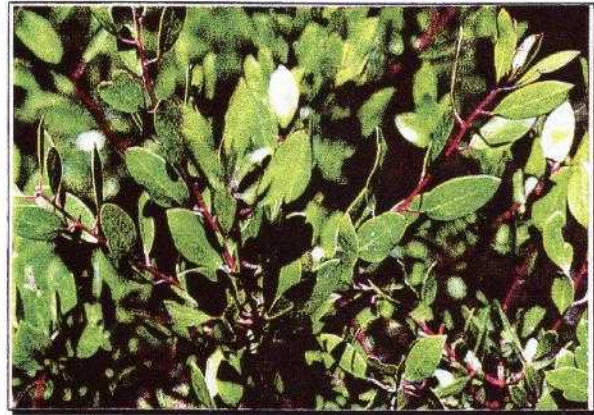
Nandina domestica - Heavenly Bamboo Large Shrub # 61



Photinia fraseri - Photinia Large Shrub # 68



Xylosma congestum - Xylosma Large Shrub # 93



Arctostaphylos densiflora 'Howard McMinn' - Manzanita Sm. Shrub # 3



Cotoneaster microphyllus - Rockspray Cotoneaster Small Shrub # 18



Juniperus species - Juniper Small Shrub # 29



Salvia species - Sage Small Shrub # 43



Westringia rosmariniformis - Westringia Small Shrub # 48

DROUGHT RESISTANT PLANTS SUITABLE FOR
MONTEREY COUNTY



Ceanothus griseus 'horizontalis' - Ceanothus Ground Cover # 18



Erigeron karvinskianus - Fleabane Ground Cover # 32



Oenothera berlandieri - Mexican Evening Primrose Ground Cover # 43



Rosmarinus officinalis 'prostratus' - Creeping Rosemary Ground Cover # 52



Ganzania - NCN Ground Cover # 35



Thymus species - Thyme Ground Cover # 60



Erysium 'Bowles Mauve' - Wallflower Perennial # 23



Gaura lindheimeri - Gaura Perennial # 27

DROUGHT RESISTANT PLANTS SUITABLE FOR
MONTEREY COUNTY



Helichrysum petiolatum - Strawflower Perennial # 31



Nepeta fassenii - Cat Mint Perennial # 43



Penstemon species - Penstemon Perennial # 47



Tulbaghia violacea - Society Garlic Perennial # 60



Helictotrichon species - Blue Oatgrass Ornamental Grass # 5



Passiflora species - Passion Flower Vine # 14



Bougainvillea species - Bougainvillea Vine # 1



Tecomaria capensis - Cape Honeysuckle Vine # 20