



UNIVERSITY OF CALIFORNIA
Agriculture and Natural Resources

UC Cooperative Extension

2024 ANNUAL REPORT

*University of California
Cooperative Extension*



Table of Contents



- 01-02** Message from the Director
- 03-06** Meet Our Team
- 07** Meeting Strategic Pillars
- 08** Introducing our New Water and Soil Advisor
- 09** Say Hello to: Our New Livestock and Natural Resources Advisor
- 10** Identifying Not So Beneficial Insects
- 11** Providing Extension Through the Grapevine
- 12** Advancing Sustainable Specialty Crops
- 13** Reducing Regulatory Hurdles
- 14** Improving Dairy Resilience
- 15** Digging Deep into Soil Health
- 16** Grazing to Reduce Fire Fuels
- 17** Igniting Respect for Fire
- 18** Helping Youth Find Their Spark
- 19** Cultivating Environmental Stewardship
- 20** Strengthening Regional Food Systems
- 21** Offering Community Health Strategies
- 22** Sharing Tips and Tricks for Home Food Preservation
- 23** Future Outlook
- 24** Thank You to Our Partners and Collaborators

Message from the Director



We would like to thank Stephanie for her 40 years of dedicated service to Sonoma County.

Dear Chair Lynda Hopkins, Chris Coursey, James Gore, Rebecca Hermosillo, and David Rabbitt,

The **University of California Cooperative Extension (UCCE)** is proud to present our 2024 Annual Report, highlighting the department's accomplishments through our innovative programs in Sonoma County. UCCE is your county department that provides education and research-driven information to improve agriculture production and natural resources management. The department's programmatic delivery is aligned with the County's strategic pillars: Climate Action and Resiliency. The UCCE department has expanded over the past few years, providing even more support to agriculture and natural resource issues.

As the retiring Livestock and Range Management advisor, I created a prescribed grazing program to increase the use of livestock grazing for fuels reduction. The innovative strategic grazing program targets landscapes to maintain fuel breaks, control shrub encroachment, and reduce vegetation near the wildland-urban interface (WUI).

UCCE Dairy Advisor works with Sonoma County dairy producers to receive California Department of Food and Agriculture Alternative Manure Management Program grants, totaling over \$2.2 million to separate manure solids and increase compost production for land application. The UCCE Dairy Advisor also leads composting workshops for dairy producers, providing hands-on experience in composting basics and the mechanics of creating and using compost on their farms.

UCCE Sonoma Fire Advisor, working with the Agriculture Commissioner, is creating an online training to increase access for landowners and employees to receive training for the Agriculture Access Program, ensuring local livestock, dairy, and viticulture producers' access to their properties in disasters. UCCE Fire Advisor provides training to landowners and managers, achieving more stewardship on the landscape using prescribed fire.

UCCE Agriculture Ombudsperson held office hours at the local Farm Service Agency (FSA) office providing outreach and demystifying funding opportunities for climate smart farming, disaster programs and loan opportunities. The UCCE Agriculture Ombudsman works with over 75 individual producers around regulatory hurdles: continuing to connect producers to resources and agriculture agencies with regards to business development, land access and overall funding opportunities.

UCCE Specialty Crop Advisor creates positive impacts in the farming community by providing science-based, actionable information and training tailored to meet local growers' needs and priorities to expand growers' contributions to Sonoma County's local food system. Outreach and educational activities are strengthened via partnerships with local organizations, technical service providers, and agricultural professionals.

UCCE Integrated Pest Management (IPM) Advisor brings together members of the grape industry for hands-on workshops with microscopes to walk through how to identify sharpshooters that spread *Xylella fastidiosa* that causes Pierce's disease of grapevines and vineyard leafhoppers. These classes teach growers how to identify specific insects, providing them crucial, initial knowledge on how to implement IPM techniques in their vineyards.

UCCE Climate Smart Agriculture Specialist works with local farmers and ranchers to receive 38 Healthy Soils Program awards. These projects directly address climate mitigation, and upon completion will have sequestered 27,969 metric tons of carbon dioxide equivalent due to an improvement of soil health on their farms.

UCCE 4-H Administrative Aide continues to grow the local 4-H community, connecting with more families, and helping develop new 4-H projects, which include animal sciences, animal showmanship, leadership development, and community service. The AA works directly with the 4-H Community Club Council (CCC), which was awarded the Friend of Agriculture from the Sonoma County Harvest Fair.

UCCE Master Gardeners continue to thrive, implementing demonstration gardens around the County to provide community members a hands-on opportunity to learn about growing local food. The Master Gardeners secured over \$1M from the County of Sonoma to create a centrally located 4.5-acre demonstration garden on the County's Los Guilicos campus which will continue to be a venue for school visits, which will focus on Title 1 schools.

UCCE Master Food Preserver Program certified 27 volunteers who continue to share knowledge about a variety of home food preservation techniques with Sonoma County residents. Their efforts increase the ability for Sonoma County residents to reduce their food insecurity and preserve locally raised food products.

As the UCCE retiring Department Head, it has been my privilege to work with such amazing County Supervisors over my 40-year tenure in Sonoma County. I leave knowing that the partnerships created during the 107-year partnership between UCCE and the County of Sonoma will continue to thrive and grow.

Stephanie Larson, PhD

UCCE, Livestock & Range
Management Advisor, Emeritus

Meet our Team



Stephanie Larson, PhD
County Director, Livestock &
Range Management Advisor



Deborah Curle
Master Food Preserver Coord.
& Admin Service Officer



Judy Hatfield
Senior Office Assistant



Cindy Kron, PhD
Integrated Pest
Management Advisor



Chris Chen, PhD
Integrated Vineyard
Systems Advisor



Ellie Andrews, PhD
Specialty Crops Advisor

Meet our Team cont.



Paolo Solari
Senior Ag Program
Assistant



Kerry McGrath
Agricultural Ombudsperson



Randi Black, PhD
Dairy Advisor



Amanda Charles
Climate Smart
Agriculture CES



Helaine Berris
Soil and Water Advisor



Devii Rao
Livestock and Natural
Resources Advisor

Meet our Team cont.



Steven Worker
4-H Youth Development
Advisor



Diego Mariscal
4-H Regional Supervisor



Shelley Ferina
4-H Administrative Aid



Karla Naiced Osuna
4-H Community
Education Specialist



Mimi Enright, MBA
Master Gardener & Community
Food Systems Coord.



**Julia Van Soelen
Kim, MPH, MS**
Food Systems Advisor

Meet our Team cont.



Zaw Wai Htoo, PhD
Community Health Advisor



Tori Norville, MS, RPF
Fire Science Advisor



Bella Zahra
Staff Research Associate



Mike Jones, PhD, RPF
Forest Advisor



Steven Swain
Environmental Horticulture
Advisor



Kerry Winger
Sudden Oak Death Outreach
Coordinator

Strategic Initiatives



<https://socostrategicplan.org/>

Strategic Plan Alignment

The department's programmatic delivery aligns with the County's strategic pillars – **Climate Action and Resiliency** and **Racial Equity and Social Justice** – with a focus on three critical areas:

- Climate smart agriculture
- Community resiliency
- Sustainable science

UCCE designs and implements programs through a social equity lens, ensuring inclusive and equitable access to resources and outcomes.

Climate smart agriculture programs equip agricultural producers with strategies to maintain economic viability while improving their climate impact.

With the establishment of the North Coast Emergency Food Systems Partnership, our efforts strengthen regional collaboration and support the development of a more **resilient community** food system.

Our work in **sustainable science** drives innovative solutions for managing local working landscapes – including rangelands, forests and agriculture lands – while enhancing ecosystem services such as carbon sequestration, food production, and the provision of clean air and water for the benefit of all Sonoma County residents.

Introducing: Our New Water and Soil Advisor



Meet Helaine Berris



Helaine is the new Area Water and Soils Resources Advisor, serving Sonoma, Napa, Marin, and Mendocino counties. Originally from Nevada, she holds a B.S. in Eco-Hydrology from the University of Nevada Reno and a M.S. in Hydrologic Science and a M.S. in International Agricultural Development from UC Davis. She was a Soil Conservationist for the USDA-Natural Resources Conservation Service in Seattle, Washington. She also worked for an ag-tech company and was a teacher in China and Spain for 4 years.



2025 Water and Soil Vision



Her vision for the Water & Soil Program includes providing outreach and research for on-farm water management and innovation. The program focuses around practices that help Sonoma County agricultural producers improve farm scale water efficiency and soil health, meet local regulations, and adapt to environmental extremes. Her primary goals for 2025 are to learn as much as she can about her new community and complete a needs assessment to better understand producer/stakeholder challenges and barriers around water.

Helaine Berris, MS
Soil and Water Advisor

Say Hello to: our New Livestock & Natural Resources Advisor ⁰⁹



Meet Devii Rao



Devii is our new Livestock and Natural Resources Advisor serving Sonoma and Marin counties. Devii grew up in Marin County, in San Rafael and is excited to be back home! She was the Livestock and Natural Resources Advisor in San Benito, Monterey, and Santa Cruz counties conducting research focused on targeted grazing, prescribed burning, and climate change mitigation on working rangelands. She also worked for Point Reyes National Seashore, Gold Ridge Resource Conservation District, and the Marin/Sonoma Weed Management Area.



Plans for 2025



Devii will soon conduct a needs assessment to understand the highest priority concerns and issues in Sonoma County. She will use that information to develop her research and education program. She anticipates that she will be focusing on economic and ecological sustainability of livestock grazing operations, and educating the public about the many benefits of grazing in addition to food production, including improving native plant and wildlife habitat and keeping our communities safer from wildfire.

Devii Rao, MS
Livestock and Natural Resources Advisor

Identifying Not So Beneficial Insects...



Sharpshooter and Leafhopper Identification Workshops

Cindy Kron, Integrated Pest Management (IPM) Advisor for the North Coast, brings together members of the grape industry for hands-on workshops with microscopes to identify sharpshooters that spread *Xylella fastidiosa* that causes Pierce's disease of grapevines and vineyard leafhoppers. The class starts with color handouts exploring identification features followed by pinned insects to practice finding these identifying features under the microscope. The class goes one step further with identifying the different species collected from the vineyard on yellow sticky cards (insect traps). Properly identifying insects is the first step of IPM.

Cindy Kron, PhD
Integrated Pest Management Advisor

2nd Biennial North Coast Olive Field Day

The 2nd Biennial North Coast Olive Field Day took place at the end of July 2024 and was a sold-out event. Growers had the opportunity to taste local olive oil and connect with olive researchers about current research results involving olive fruit fly, canopy management and nutrition, alternate bearing, olive diseases, and irrigation.

The North Coast IPM Seminar

The North Coast IPM Seminar is an annual grape-centric virtual meeting held over two half days in late November. The seminar brings the latest research results from researchers working on vineyard pest and disease issues that affect the Sonoma County grape industry. Videos from previous year's presentations can be viewed: <http://ucanr.edu/ncipm2024videos>

Providing Extension Through the Grapevine

Viticulture Industry Events

In 2024, the UCCE Sonoma Viticulture Program increased programmatic offerings by 44% when compared with 2023. The wide breadth of partner organizations who help co-organize these events brings expertise to Sonoma County and helps develop Sonoma County’s reputation as a region on the forefront of viticultural innovation and education. A wide audience of viticultural professionals attend the program’s events. These events include Sonoma County Grape Day, Soil Carbon Workshop, Organic Crops Workshop, and reoccurring PCA Breakfasts. Each of these events are well-received and may be pursued in future years.



Research in Rootstock

A long term research study looking into the efficacy of grapevine rootstocks for climate adaptation was concluded with the final data measurements taken in October 2024. The data includes: stem water potential measurements on grapevine leaves and sampled grape clusters for titratable acidity testing. This represents 3-years of data collection and has potential to help put Sonoma County on the forefront of climate-adaptive viticulture as vineyards continue to face climate-related challenges to farming winegrapes.

126%

Increase in viticulture event participation



44%

Increase in program offerings



11

Sonoma County extension events



Chris Chen, PhD
Integrated Vineyard Systems Advisor

Advancing Sustainable Specialty Crops

Challenges in the Field

Collaborative problem-solving and science-based advising focuses on in-field agricultural challenges to improve sustainability in high-value and niche specialty crop systems, such as apples, olives, other fruits, diversified vegetables, etc. Ellie Andrews, the Specialty Crops Advisor, increased grower practical knowledge, skills, and adoption of sustainable farming approaches that promote plant health, production, Integrated Pest Management (IPM), and crop system resilience and climate adaptation. Outreach and extension education focused on growers' key common needs to support sustainable specialty crop production and create positive impacts in the farming community. Science-based, actionable information and training was tailored to meet local growers' needs and priorities to expand growers' contributions to our local food system. Outreach and educational activities strengthen partnerships with local organizations, technical service providers, and agricultural professionals. Ellie supports the Sonoma Marin Agriculture and County Climate Coalition in collaboration with many local



partners to advance the implementation of science-based climate smart practices in specialty crop systems.

Applied Research

To answer growers' questions, Ellie established six field trials addressing key challenges in apples, pears, olives, and diversified vegetable systems. Collaborations with local and statewide agricultural professionals and UC experts strengthen this grower-guided applied research in specialty crops in Sonoma County.

20

Educational Extension Events



54

Farm Visits



To stay in the know on all things specialty crops:

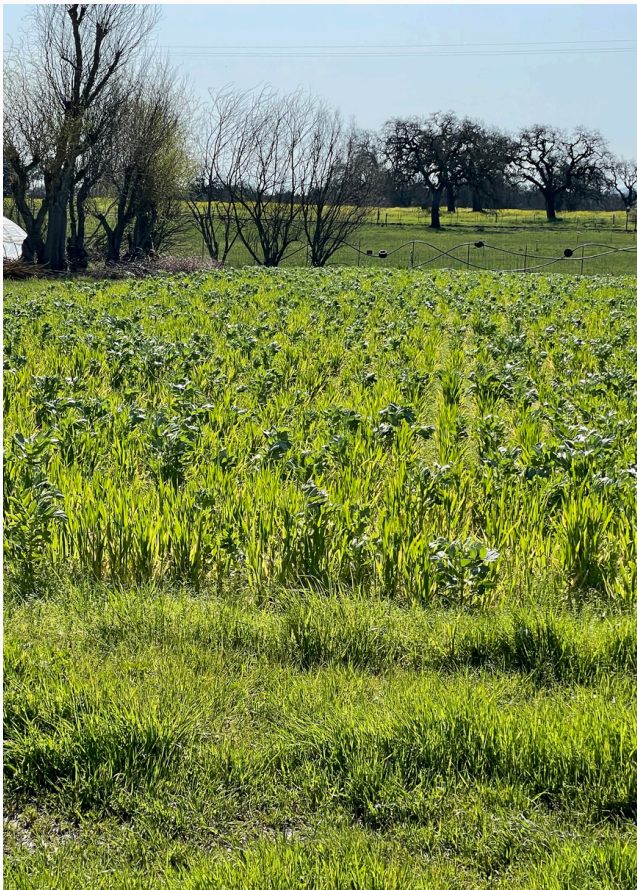


@specialtycrops

Reducing Regulatory Hurdles

Addressing concerns and limitations within our agricultural sector

Kerry McGrath, Agricultural Ombudsperson, works as an impartial individual in partnership with California Department of Food and Agriculture (CDFA) and Farm Service Agency (FSA) to help their programs be more accessible to growers in Sonoma County. Kerry and UCCE Marin's Sustainable Agriculture Coordinator held office hours at our local FSA office and worked directly with them on outreach and demystifying their funding opportunities for climate smart farming, disaster programs and loan opportunities. In 2024, she worked with over **75 individual producers** around regulatory hurdles. She continues to connect with Sonoma County producers to resources and agencies with regards to business development, land access and overall funding opportunities.



Kerry continues to be an active participant in the broader agricultural community. She is on the CDFA Small-Scale Producer Advisory Committee (CSPAC) which helps ensure that CDFA programs, resources and technical assistance are tailored to the needs of small-scale producers. The CSPAC helps facilitate communication between small-scale producers and CDFA, ensuring that their concern and perspectives are being heard. She is also on the Santa Rosa Junior College Agriculture and Natural Resource Advisory Committee. She, along with other committee members, weigh in on curriculum development, including new program development and modifications to existing programs.

75+



Individual Farmers Assisted

Improving Dairy Resilience



Benefits of Alternative Manure Management

Randi and Amanda collected manure samples from North Coast dairies with manure separators funded through the CDFA Alternative Manure Management Program. This was part of a larger statewide study supported by California Department of Food and Agriculture. Across the sampled separators, 25% of volatile solids were removed. Manure separators in Sonoma County removed 38% of volatile solids. Sonoma County differs in climate and dairy farm management from other regions, likely contributing to the higher efficiency. Equipping dairy farmers with regional and seasonal expectations for efficacy can improve practice implementation and long-term commitment to reducing their climate impact. Further, Sonoma County dairies continue to implement innovative technologies to produce climate conscious foods for their local communities.

Randi Black, PhD
Dairy Advisor

Preventing HPAI on Local Dairies

Randi partnered with California Dairy Quality Assurance Program (CDQAP) to bring three in-person workshops on Highly Pathogenic Avian Influenza (HPAI) preparation, biosecurity, and financial resources in regions of Northern California not yet affected. These workshops were attended by 75 participants representing local dairies. UCCE also collaborated with CDQAP and California Milk Advisory Board to provide bi-weekly webinars updating attendees on the current HPAI situation, pressing topics related to HPAI, and connecting dairy producers and support industries with resources. These efforts empowered local dairies to keep their cows and workforce safe while still producing nutritious local food.

75



Workshop Participants

Digging Deep into Soil Health

Climate Smart Agriculture Program



Amanda Charles, Climate Smart Agriculture Community Education Specialist

One-on-one Technical Assistance

In an effort to incentivize more climate friendly farming, Amanda Charles, our Climate Smart Agriculture Community Education Specialist (CES), set out to meet with local farmers and ranchers to discuss project ideas and put together applications for funding programs regarding soil health improvement. 31 applications were submitted for 23 farmers. Amanda worked in conjunction with our Dairy Advisor, Randi Black, to submit 4 applications for CDFA's Alternative Manure Management Program.

In 2021, our CES worked with local farmers and ranchers to receive 38 Healthy Soils Program awards. These projects are in their final year of implementation, sequestering 27,969 metric tons of carbon dioxide equivalent due to an improvement of soil health on their farms. That's a lot of healthy Sonoma County soil!



\$2.5 million

Was applied for to reduce on-farm methane emissions by...



3,232 MTCO_{2e}

which is equivalent to...

1,142 tons

of waste recycled instead of landfilled



Grazing to Reduce Fire Fuels



Strategic Prescribed Grazing

Dr. Stephanie Larson, UCCE's Livestock & Range Management Advisor Emeritus, created a prescribed grazing program to maximize the benefit of livestock grazing for fuels reduction. The innovative strategic grazing program targets landscapes, to maintain fuel breaks, control shrub encroachment, and reduce vegetation near wildland-urban interface (WUI) areas. UCCE's efforts increase the total grazable acreage in Sonoma County; working with landowners and managers to better manage working landscapes to achieve climate mitigation and conservation goals.

Stephanie Larson, PhD
Livestock and Range
Management Advisor Emeritus



Match.Graze.

Stephanie continues to expand Match.Graze, <https://matchgraze.com/>, to better serve grazers in the Bay area. There are already over 200 users in the Bay area, and more land opportunities are being explored. Sonoma County has a unique opportunity to support the economic development of a full-scale grazing program – from cooperative grazing units, contract grazing, and commercial grazing for commercial livestock producers.

Wildfire Fuel Mapper (WFM)

Stephanie also continues to expand the WFM. Phase II, now allows landowners to select multiple parcels, maps or forages to help them prioritize where and how to manage vegetation to reach resource goals and reduce fire risks.

Igniting Respect for Fire



Technical Expertise

Tori Norville, the Fire Science Advisor, is a member of two technical advisory groups guiding the County’s efforts in creating a Wildfire Resilience Program. The creation of this program will allow Sonoma County to perform fuel reduction and stewardship projects more efficiently; leading to healthy ecosystems and increased wildfire protection for communities.

Hands-on Skills with Fire

In 2024 Tori hosted the second annual Sonoma Pile Burning Workshop with the Santa Rosa Circuit Riders. This workshop empowers participants to utilize fire as a tool.

90%

of Pile Burning Workshop participants stated they would be willing to try pile burning the next year

Fire Preparedness for Agricultural Operations

With agriculture being a huge industry within Sonoma County, Tori worked in collaboration with the UCANR Fire Network to produce printed resources for agricultural landowners and hosts workshops for farmers and ranchers.

New Staff Research Assoc.

Bella Zahra was hired in August 2024. She is assisting with research and will help expand the Program’s outreach and education.



Tori Norville, MS, RPF
Fire Science Advisor



Helping Youth Find Their Spark



18

Sonoma County 4-H sparked curiosity and learning in 1,043 youth, ages 5-18, with over 200 projects offered through 17 Community Clubs, 5 Afterschool Clubs, 2 residential overnight summer camps, and 4 week-long STEM day camps. Over 600 4-H youth and adult volunteers led these projects and events, totaling over 24,000 collective hours of educational content.

Strengthening Partnerships Through expanded partnerships, 4-H grows and connects with more families, and helps develop new 4-H projects, which include: animal sciences, animal showmanship, leadership development, community service, soccer & nutrition, robotics, STEM, and vocational arts.

Intentional Community Education Sonoma County 4-H hosts events such as the 4-H Chicken Que, showcasing Sonoma 4-H's projects, and the North Bay Science Discovery Day. Over 10,000 attendees participated in the 12th annual North Bay Science Discovery Day, a public education event organized by UC ANR 4-H, supported by 52 sponsors, 75 exhibitors (with 120 hands-on activities), and 150 volunteers. The event sparked wonder and curiosity -- 86% of attendees reported an increased interest for science!



Projects Offered

200+



Hours of Educational Content

24,000+



North Bay Science Discovery Day Attendees

10,000



Cultivating Environmental Stewardship

One Garden at a Time



Meaningful Program Impact

UC Master Gardeners of Sonoma County (UCMGSC) continues its over 10+ year partnership with Sonoma Water on the Garden Sense landscape water conservation program, which has helped save over **200 million gallons of water** since its inception. The Portable Container Gardens project team hosted seven workshops to provide Sonoma County residents with limited access to garden space the opportunity to learn about growing their own food. As a founding member of the Resilient Landscapes Coalition (funded by the

County of Sonoma) UCMGSC continues to educate on practices to mitigate the risk of wildfire damage.

Hands-on Learning Opportunities

UCMGSC has demonstration gardens around the County to provide community members a hands-on opportunity to learn. UCMGSC secured over **\$1M** from the County of Sonoma to create a centrally located **4.5 acre demonstration garden** on the County's Los Guillicos campus which will continue to be a venue for school visits (with a focus on Title 1 schools).

240 Master Gardeners
17,816 Volunteer Hours

Mimi Enright, MBA
Master Gardener Program Coordinator



Strengthening Regional Food Systems

The Food Systems team leads the North Coast Emergency Food System Partnership, a \$1.5M project spanning 6 counties, from Marin to Del Norte. The project includes a 275-person Community of Practice that is building relationship and increasing capacity among local food systems stakeholders and emergency managers to increase the amount of local food in emergency feeding—including everyday distributions from food banks and pantries and emergency food assistance in disasters.



“My key takeaway [from this event is the] importance of centering equity when planning for disaster response, as well as lived experiences of socially disadvantaged groups in order for the system to be sustainable long-term.”
– Event participant, North Coast Emergency Food System Partnership



Community Based Food Networks (CBFNs) The project team launched CBFNs in each of the 5 supervisorial districts in the County to build community food systems resilience. Working collaboratively across a range of food system and social service organizations, CBFNs aim to create a structure of shared trust and commitment to improve food access for vulnerable communities. This work builds on UCCE Sonoma’s leadership of the Sonoma Community Organizations Active in Disaster (COAD) Food Access group and the Sonoma County Food Recovery Coalition.

Farmer’s Market Research Julia Van Soelen Kim, Food Systems Advisor for the North Bay, continues community-engaged research to expand access to farmers markets with Farmers Market LIFE. The collaborative effort pilots innovations to make farmers markets more welcoming to the whole community, expands use of CalFresh and Market Match nutrition incentives, and improves the financial viability of vendors. In the past year, Farmers Market Ambassadors connected community to the market and the market to the community. Read about the project in the article, [“The Impact of COVID-19 on CalFresh and Market Match Spending at Farmers Markets”](#).

Julia Van Soelen Kim, MPH, MS
Food Systems Advisor

Mimi Enright, MBA
Master Gardener Program Coordinator

Offering Community Health Strategies

The Community Nutrition and Health Program

Dr. Zaw Wai Htoo, Community Health Advisor, connects with stakeholders, explores health priorities, and delivers interactive presentations on vital nutrients and health for older adults. Zaw Wai collaborates with Cloverdale-Senior-Center management and visits local organic markets discussing sustainable food systems and distributing educational material such as a Resource Guide and information on nutrition and respiratory health in body-systems.



Resource Development and Technical Support

Zaw Wai offers articles including “Staying Safe in Extreme Heat” in the Sonoma and Marin Farm Bureau Journal, which serve as critical guides for at-risk populations with actionable tips/strategies, and resource links for broader outreach. He empowers individuals and caregivers with management strategies in his seminar series, “Deeper Understanding of Diabetes and Managing Blood Sugar”.

77%

Revenue targets



Workshops and Leadership

Zaw Wai served as Chairperson for Advancing Older-Adult Health and Nutrition Collaborative UCANR-UCSF-UCDavis and presented initiatives at the UC Regional Conference 2024 in Santa Cruz. He increases partnerships by participating in meetings with Health and Human Services, Aging and Disability Division Managers, “Meeting with Mayor & Friends”, Commissioners/Advisory Council, Executive Committee members, and President/CEO of Redwood-Empire-Foodbank.

67%

Increasing online sales



Sharing Tips and Tricks

For Home Food Preservation



Current Offerings

The UC Master Food Preserver Program of Sonoma County has 27 certified volunteers who share their knowledge about a variety of home food preservation techniques with Sonoma County residents for the past four years since the program became active locally. They currently offer monthly pressure gauge testing, free of charge to the general public.

27

Certified Volunteers



Future Plan

When doing presentations, demonstrations or hosting workshops, the group partners with County libraries, the Sonoma Clean Power Customer Center in Santa Rosa, Ceres Community Project, community gardens and more to reach Sonoma County communities and populations. In 2024, the group did 6 outreach events in the County. There are 15 trainees in the 2025 class who will become Master Food Preservers for future years to come!

6

Outreach Events



Deborah Curle,
Master Food Preserver Coordinator





Future Outlook

A New Chapter for UCCE Sonoma County:

Building the Future of Agriculture and Research

As 2025 unfolds, UC Cooperative Extension (UCCE) Sonoma County enters an exciting new era —guided by a regional leadership model designed to strengthen collaboration, optimize resources, and deepen our impact across the North Bay.

In March, Lauren Cartwright was appointed as the new UCCE Area Director for Marin, Napa, and Sonoma counties. A longtime Sonoma County resident with nearly two decades of experience in local government, economic development, and the wine industry, Lauren brings an understanding of the region’s agricultural landscape and a passion for community-based solutions. Her leadership promises to bring new momentum and strategic direction to our programs and partnerships.

This new model of regional leadership provides a unique opportunity to align efforts across counties, build synergies among local teams, and enhance our ability to conduct applied research, deliver technical support, and promote the value of agriculture in our communities. By integrating resources and expertise across the three county offices, we are better positioned to respond to emerging challenges and support the long-term sustainability of North Bay agriculture.

Recent staffing investments further demonstrate this commitment. We’ve received a new position allocation for a Weed Science Advisor and expanded the Livestock and Natural Resources Advisor role, bolstering our capacity to deliver science-based support to landowners, producers, and conservation partners. These additions reflect our ongoing mission: to serve as a trusted resource for the region’s agricultural and natural resource communities.

Looking ahead, UCCE is aligning its local initiatives with UC Agriculture and Natural Resources’ new strategic plan—Vision 2040. This ambitious blueprint charts a course for innovation, resilience, and equity across California’s agricultural and environmental sectors. Over the coming year, Lauren will work with local stakeholders to integrate Vision 2040 with county-level planning, ensuring that our strategies reflect shared priorities and maximize the impact of both county and university investments.

Together with our regional partners, we are shaping a future that honors our agricultural heritage while embracing the opportunities of tomorrow.

Thank you to our Partners and Collaborators

24

