

University of California President's Advisory Commission on Agriculture and Natural Resources

CHUCK AHLEM

Owner and Operator, Charles Ahlem Ranch



Chuck is the owner/operator of Charles Ahlem Ranch in Turlock with 4,000 Jersey milking cows and farming on 1,100 acres. He is the founding partner of Hilmar Cheese Company, which annually produces more cheese from its Hilmar, California site than any other facility in the world. He serves as a member of the USDA Trade Policy Committee, the

California Milk Advisory Board and the UC Davis Western Institute for Food Safety and Security. Ahlem served as undersecretary of the California Department of Food and Agriculture during the Schwarzenegger administration. Other positions of leadership have included serving as dairy industry representative on the State Board of Food and Agriculture and membership on the Central Valley Regional Water Quality Control Board. A lifetime resident of the Central Valley, Charles graduated with a degree in dairy science from CSU Fresno.

MANPREET BAINS

Partner, Manseena Orchards



Manpreet continues the farming legacy her parents built after emigrating from India. In 1969, Manpreet's parents established their farming operation, which produced prunes and peaches and ran a commercial prune dehydrator. In 2005, Manpreet and her sister officially took over general operation of their

parents' farms and created Manseena Orchards where they produce prunes and walnuts. Manpreet currently serves on the Board of Directors for the Agricultural Council of California and as an alumni liaison to the California Agricultural Leadership Foundation education team. She earned a B.A. in international studies with an emphasis in political science from Pepperdine University and an M.A. in international relations from the University of Chicago.

ASHLEY BOREN

Board Member, California Trout, California Water Data Consortium, Watershed Solutions Network



Ashley is the former CEO of Sustainable Conservation, a California nonprofit that advances the collaborative stewardship of California's land, air, and water for the benefit of people and nature. She currently serves on the Boards of California Trout, California Water Data Consortium, and Watershed Solutions

Network. Ashley has a B.A. in human biology, an M.A. in applied economics and an M.B.A. from Stanford University.

JARON BRANDON

Supervisor District 5, Tuolumne County



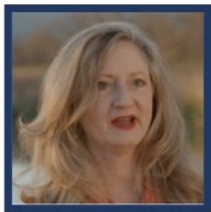
Jaron is a Tuolumne County native who grew up in his family's music store where he experienced the challenges facing small businesses. While earning his B.A. in government and political science at UC Merced, Jaron was elected president of the Associated Students, overseeing a \$1.3 million budget. He later served as an

intern in the California State Assembly, State Senate, and U.S. Congress. Jaron worked for a Bay Area tech startup doing editorial work and became the service's editor in chief before returning to Tuolumne County to join the family business. He was elected to the Board of Supervisors in 2020 as the Representative of District 5, which includes Railtown 1897 State Historic Park. Jaron is an advocate of smart growth and building on the area's historic heritage.

DON BRANSFORD*Owner and Operator, Bransford Farms*

Don was appointed to the State Board of Food and Agriculture in 2006 by Governor Schwarzenegger and reappointed in 2011. He served as chair of the USA Rice Federation Rice Producer's Group, the California Rice Commission, the Northern California Water Association and is president of the Glenn-Colusa Irrigation

District. He served on the board of the Farmers' Rice Cooperative and the California Rice Industry Association. Bransford Farms is a diversified farming operation growing rice, prunes, and almonds in the Sacramento Valley. He was appointed to the Bay Delta Advisory Council of CALFED by Governor Wilson in 1995 and was appointed to the Governor's Advisory Drought Planning Panel in 2000 by Governor Davis. He was named the USA Rice Federation's Rice Farmer of the Year for 1999 and awarded a Lifetime Achievement Award in the US rice industry in 2005.

CELESTE CANTÚ*Chair, San Diego Water Quality Control Board*

Previously, Celeste led the Santa Ana Watershed Project Authority and has been working on the crest-to-coast, corner-to-corner integrated regional watershed management plan addressing water-related issues and joining entities and stakeholders seeking to create a new vision of

sustainability for the Santa Ana River watershed. Celeste served as executive director of the California State Water Resources control board and as CEO of Water Education for Latino Leaders. She joined the PPIC Water Policy Center Advisory Council in 2015 and became chair in 2017. During the Clinton administration, Celeste served as the USDA rural development state director for California. Celeste was born and raised in the Imperial Valley to a pioneer family. There she served first as planning director for her hometown, Calexico, and later as executive director for the Imperial Valley Housing Authority. Celeste has a B.A. from Yale in urban planning and policy and an M.A. in public administration from Harvard's Kennedy School of Government.

PATRICIA CARRILLO*Executive Director, Agriculture and Land-Based Training Association (ALBA)*

Patricia has over a decade of experience working in the non-profit sector, including working in ALBA's Business Education Program from 2006-2013. In that role, she developed tools and curricula for beginning farm entrepreneurs, increased alternative financing opportunities for farmers, and advocated for socially disadvantaged

beginning farmers. Her skills include grant management and reporting, budgeting for small businesses, small business development consulting, and program monitoring and evaluation. Prior to ALBA, she was finance and operations director at the YWCA Monterey County and later program director at the Housing Resource Center of Monterey County, where she was responsible for homeless prevention, rapid rehousing, Veterans' assistance, security deposit guarantee, financial literacy and home ownership programs. She is a Salinas native and holds a B.S. in business administration from San Jose State University.

CAROL CHANDLER*Partner, Chandler Farms, L.P.*

Carol is past state president of California Women for Agriculture, a member of the CSU Fresno Water Task Force and served on the CSU Board of Trustees. She was a member of the UC Board of Regents and belongs to the La Feliz Guild of Valley Children's Hospital and the Common Threads Committee,

which honors philanthropic women in Valley communities. The California State Legislature named Carol as Woman of the Year in 1992 and 2002. She was elected to the board of Western Growers in 2004 and currently serves as treasurer. She received her B.A. from UC Davis and an M.A. from CSU Fresno. Before joining the family farm, growing grapes, peaches, plums, citrus and almonds, Carol taught at Fresno City College.

PAULA DANIELS

Executive Director, Los Angeles County Office of Food Systems and Co-Founder and Chair, Center for Good Food Purchasing



Paula is executive director of the L.A. County Office of Food Equity, a public-private partnership with L.A. County and L.A. philanthropy. She is also co-founder of the Center for Good Food Purchasing, founder of the Los Angeles Food Policy Council and was executive director of California Central, a USC

Villaraigosa Initiative. After a long career as an attorney in private practice, she served as a Los Angeles Public Works commissioner, a full-time position overseeing the department of public works, and senior advisor to Los Angeles Mayor Villaraigosa. She has been a commissioner with the California Coastal Commission and a gubernatorial appointee on the board of the California Bay-Delta Authority. Governor Brown appointed her to the California Water Commission, and she served in his office of planning and research as senior fellow for food systems, water and climate. She is a public policy leader in environmental food and water policy; awards include the 2012-13 Stanton Fellowship, the 2015 Pritzker Education Fellowship at the UCLA Institute of the Environment and Sustainability, and the 2013 Lee Chair in Real Estate Law and Urban Planning at UC Berkeley.

GRANT DAVIS

General Manager, Sonoma Water Agency



Grant is responsible for providing drinking water to over 600,000 residents in portions of Sonoma and Marin counties and wastewater management for 60,000 customers, for maintaining nearly 100 miles of streams and detention basins for flood protection, and for restoring habitat for three federally listed fish species in

the Russian River. His team also maintains a renewable energy portfolio that has resulted in a carbon free water supply and distribution system. Prior to joining Sonoma Water, Grant was executive director of The Bay Institute. He has also worked for Congresswoman Woolsey, State Senator Marks, and Assemblywoman Killea. Grant currently serves as a board member of the California Utility Executives and Managers Association, WaterReuse California, and the Bay Planning Coalition. He received his B.A. in political science from UC Berkeley.

JOHN DE LUCA

Board member, Bay Area Council



John, who received his Ph.D. in international relations at UCLA, served as senior advisor for agriculture, business, and public policy to UC President Janet Napolitano, following similar positions for UC Presidents Atkinson, Dynes, and Yudof. He also served as a member of the UC Davis Chancellor's Advisory Board and

is currently emeritus at UC Berkeley's Goldman School of Public Policy. He is past chairman of the board for the Ernest Gallo Clinic and Research Center at UCSF and its affiliate, the Institute for Molecular Neuroscience. He served as president and CEO of the Wine Institute from 1975 to 2003, where he directed the industry's legal and governmental activities in the U.S. and overseas, representing the California wine industry's hundreds of wineries and thousands of winegrowers. Prior to that, he served eight years as deputy mayor of San Francisco to Mayor Alioto. John was a Fulbright Scholar and was selected for the inaugural class of the White House Fellows program, where he served on the National Security Council and with the Vietnam Coordinating Committee. Currently, he is a member of the board of directors of the Bay Area Council.

MATT DIAS

President and CEO, California Forestry Association



Matt graduated from Cal Poly Humboldt in 1999 and shortly thereafter worked with the former Pacific Lumber Company through 2005. He then moved to Davenport, CA where he was employed with Big Creek Lumber Company. In 2012, he was appointed as the licensing officer with the California

Board of Forestry and Fire Protection and in 2015 he was appointed the executive officer for the same body, a position he held until his appointment as the president and CEO of Calforests in July 2021. Matt is Registered Professional Forester #2773.

LUCAS FRERICHS*Supervisor District 2, Yolo County*

Frerichs represents District 2, including the cities of Davis and Winters, the campus of UC Davis, and the rural land of southwestern Yolo County. From 2021-22, he served as Mayor and Councilmember for Davis. He is a leading regional voice for smart growth, multi-modal transportation,

public safety, economic development, and environmental sustainability. He serves on the boards and is former board chair of the Capitol Corridor JPA (Amtrak California); Yolo County Transportation District (Yolobus); Valley Clean Energy, Yolo county's local clean power provider; and the Yolo Habitat Conservancy. He began his work in public service as a staffer in the California State Assembly, working for four separate Assemblymembers. With 15 years' experience working in the State Capitol, he most recently worked as associate director of state policy for The Nature Conservancy. He received a B.A. in government from CSU Sacramento and earned a certificate in land use and environmental planning from UC Davis. In 2022, he earned his M.P.A. from the Maxwell School of Citizenship and Public Affairs at Syracuse University.

BILL FROST*UC Cooperative Extension Advisor Emeritus and former Associate Vice President, UC ANR*

Bill is a rangeland management consultant and former associate vice president of UC ANR. He joined UC ANR in 1994 as a UCCE advisor in natural resources in the central Sierra, following time with the University of Arizona Cooperative Extension. He held various positions with UC ANR including natural

resource and animal agriculture program leader and director of the UC ANR Research and Extension Center system. Earlier, he worked for the California Agricultural Technology Institute at CSU Fresno as a rangeland specialist and director of the San Joaquin Experimental Range. He holds a doctorate in range management from the University of Arizona and degrees in range science from UC Davis.

LUAWANNA HALLSTROM*Principal, Collaborative Communications™*

Hallstrom previously served as chief operating officer for Harry Singh & Sons, a family-owned vine-ripe tomato producer in the U.S., and general manager of Oceanside Produce, Inc. She received her B.S. in nutrition and food science from Cal Poly San Luis Obispo. She served as a member of

several agricultural organizations, including the California Farm Bureau, Western Growers Association, Roots of Change Council, Cal Poly College of Agriculture, and the Food and Environmental Sciences President's Advisory Council. She serves as president of the National Council for Agricultural Employers, co-chair of the National Agricultural Coalition for Immigration Reform, and as a board member with the California Department of Food and Ag, co-chairing California Ag Vision 2030. She advances legislation and policy that promotes sustaining agriculture, immigration reform, food safety, and a secure domestic food supply for our nation. Her work has been recognized internationally. Over the last 25 plus years she has listened, learned, and taken action as a voice of agriculture, focusing on issues through meaningful and original stories, providing insights into the industry, building bridges, and developing relationships.

JACK HANSON*President and Owner, Willow Creek Ranch*

Hanson, his wife Darcy, and their two sons own and operate a family cattle ranch near Susanville, where they run about 500 mother cows on owned and leased private lands along with BLM and California state lands. Hanson began his agriculture career in Siskiyou County in 1975, before moving his cattle operation

to his family's current ranch in 1985. He served as a Lassen County Supervisor from 2003 to 2013. Currently, he serves as the California Cattlemen's Association treasurer, the California Animal Health and Food Safety Laboratory System chairman, and the Tri-State Livestock Credit Corporation chair. Jack graduated from UC Berkeley with a B.A. in economics.

LON HATAMIYA*President and CEO The Hatamiya Group*

A consultant for ag tech companies, former secretary of California trade and commerce under Governor Davis, and former administrator at USDA, heading up the Agricultural Marketing Service and the Foreign Agricultural Service under President Clinton, Hatamiya specializes in retail, banking, and

financial institutions; international, national, and regional economic analysis; food and agriculture; intellectual property valuation; government and public policy; and litigation support. Currently, he serves on the board of Quiks, an online payment company, and Expansaesthetics, a preclinical-stage pharmaceutical company. He also serves on the advisory board of U.S. Bank and the Central Valley Fund and served as the vice chairman of the board for SunTherm Energy and on the board of Environmental Power Corporation, an alternative energy, renewable biogas company. He graduated from Harvard with a B.A. in economics and earned his M.B.A. and J.D. from UCLA.

ISMAEL (ISH) HERRERA*Co-Executive Director, Rural Prosperity Center (RPC)*

Herrera co-founded the RPC in 2024 with the goal of advancing socioeconomic prosperity in rural communities of California and beyond. As a community and economic development practitioner, Herrera and his co-founder bring over 40 years' combined experience to the RPC, which aims to build capacity, provide

technical assistance, and deliver programs in service to, and in partnership with, rural stakeholders. He also serves on the City Council for Kerman (Fresno County) and is a proud alumnus of UC Irvine.

ERIC HOLST*Associate Vice President, Ecosystems Program, Environmental Defense Fund (EDF)*

A fourth-generation Californian, Eric is an ecologist with expertise in developing strategies for wildlife conservation and habitat restoration on working forests, farms, and ranches. As a child, Eric was surrounded by national parks and working lands, which inspired his work on forests,

farms, and the ecosystems that surrounded them both. Eric works to establish productive partnerships with farmers and ranchers, putting EDF at the forefront of collaborative conservation efforts. He was principal at Holst Conservation Consulting from 2004-2006 and served as executive director of

the Resources Legacy Fund in 2004. Holst was program officer at the Doris Duke Charitable Foundation from 1999-2003 and a manager at the Conservation Agriculture Program at the Rainforest Alliance from 1996-1999. He earned an M.S. in environmental management from Duke University.

LUNA LATIMER*Director, Mid-Klamath Watershed Council*

Luna has worked at Mid-Klamath Watershed Council since 2003 when she did graduate research with the Orleans/Somes Bar Fire Safe Council. She received an M.A. in applied anthropology from Oregon State University, focusing on forest restoration projects on private land in

the middle Klamath region. She is a fifth-generation forest worker and currently works with private landowners, agencies, contractors, and non-profit organizations to restore both upslope and in-stream ecosystems. She is passionate about non-timber forest products and serves as a board advisor for the Northwest Forest.

JERRY LOHR*Founder, J. Lohr Vineyards and Wines*

Jerry graduated from South Dakota State University in 1958, received an M.S. from Stanford University in 1959, and completed all coursework for a Ph.D. in civil engineering before joining the Air Force in 1961. As an Air Force captain, he was posted as a research scientist at the NASA Ames Research

Center from 1961-64. Returning to civilian life, Jerry opened a land development and custom home building business, but his passion for farming and appreciation for wine soon led him to take on a new challenge: winegrowing. He has been producing wine for over 40 years and has been active in industry organizations and philanthropy at SD State, UC Davis, and Cal Poly San Luis Obispo. His three children are now active co-owners of the vineyard and wine business.

JULIET MAESTAS*Consultant, Blue Sky Education*

Dr. Maestas is an enrolled member of the Hoopa Valley Tribe and a descendant of the Yurok Tribe. She is a consultant with Red Sky Education, where she specializes in strategic planning, professional development, grant writing, and youth leadership initiatives for tribal communities, universities, and

organizations. She holds a doctorate and M.A. in higher education leadership from CSU Sacramento and a B.A. in Native American Studies from UC Davis. Her research focused on tribal culture endurance and postsecondary aspirations among Native American high school students in rural California reservations. Previously, as the president of the California Tribal College, she collaborated with UC Davis and UC Berkeley to develop workforce training programs and promote environmental stewardship. She played a key role in the establishment of the Tribal Youth Water Protectors certificate program in collaboration with UC Berkeley and collaborated with UC's Tribal Naturalist certificate program. She also co-founded Building Lives by Building Structure, a tribal-led nonprofit dedicated to workforce development through the construction of small, affordable, and environmentally sustainable homes.

CORRINE MARTINEZ*President and COO, Berryessa Gap Vineyards*

Corrine is President and Chief Operating Officer of Berryessa Gap Vineyards, a small boutique family-owned and operated winery in Winters, CA. She grew up in Winters, where she worked on family farming operations from an early age. She is a limited partner in the Martinez Family

Limited Partnership which owns several hundred acres of walnuts and prunes in Yolo and Solano Counties. Her initial career was in technology and business solutions, and she worked for over 20 years at Microsoft. Prior to joining Microsoft, she was co-founder and director of Evolve Software, a start-up pioneering the professional services automation industry. She earned a B.A. in English from UC Berkeley and an M.B.A. from the University of Chicago.

MIKE MELLANO*Chairman of the Board and Vice President of Farming, Mellano & Company*

Mike farms cut flowers and foliage on 400 acres in two locations in north San Diego County, including overseeing farming activities at "The Flower Fields," an agritourism site in Carlsbad, CA. He is past president of the San Diego County Farm Bureau and chairman of the California Cut Flower Commission, where he also served as chair of their Grower, Research, and Economic Development Committee. He is a member of the USDA Floriculture Research Initiative Task Force, a trustee and chair of the Kee Kitayama Research Foundation, and a board member of the American Floral Endowment. He represents UC on the Council for Agricultural Research, Extension, and Teaching. He received his Ph.D. in plant pathology from UC Riverside in 1988.

SOAPY MULHOLLAND*Principal, Sopac & Associates LLC*

Soapy is the former President of Sequoia Riverlands Trust, a regional nonprofit land trust dedicated to preserving the natural and agricultural legacy of the southern Sierra Nevada and San Joaquin Valley. During her nearly 20 years at its helm, she guided the organization from its inception to its current status as a nationally recognized and accredited land trust. Her love of agriculture and the Sierra foothills motivated her to relocate, in 1993, from San Diego to Springville, where she has owned and managed ranches and a small citrus operation since 1989. She has been a real estate developer and has served on boards and councils up and down the state, including for the Tejon Ranch Conservancy, California Agricultural Leadership Program, Leavens' Ranches, and the Pacific Lands Stewardship Council. She previously served on the Central Valley Regional Water Quality Board and remains active in water policy throughout California. She holds an undergraduate degree from UC Berkeley and a graduate credential from UCLA and is a graduate of the California Agricultural Leadership Program.

SHARON NANCE*President, NTAPROBLEM, LLC Consulting*

Sharon retired from her position as assistant state conservationist for field operations in Fresno, CA. Her experiences in the USDA and the Natural Resources Conservation Service (NRCS) include working in civil rights, legislative affairs, programs, and outreach and serving as the USDA Strikeforce

coordinator for eight western states. She began her career with USDA as California's rural sociologist, working with Southeast Asian fruit and vegetable producers in the Central Valley. She aided tribal nations with their "Seven Generation Plan" and was invited to conduct sociological observations in the Micronesian Islands. While serving as the California NRCS Environmental Justice Coordinator, she assisted EPA/EJ on public participation stakeholder sessions throughout California. Over the last 15 years, she has continued her work in outreach, training NRCS staff to develop and lead Cadres on Extending Outreach to all Communities. She is past president of the National Association of Black Natural Resource Conservation Service employees and a life member of the American Indian and Alaskan Native Association of NRCS employees and Equality USDA. She has a B.A. in psychology, an M.A. in education, and a Ph.D. in rural sociology and agricultural economics from Ohio State University. She and her partner, Carolyn Agrifoglio, have relocated to Oregon to live near their son and his wife.

ALEJANDRA SANCHEZ*Senior Manager, Global Sustainability, Driscoll's*

Alejandra has spent the past nine years identifying opportunities to leverage the private sector's scale to form strategic partnerships and sourcing strategies as mechanisms to build a more sustainable and equitable food system. She has worked with global commodity supply chains and major food retailers and

conducted research on food policies and good systems infrastructure. Her experience encompasses corporate sustainability policies, crop management, agricultural sustainability, risk management, corporate communications, advocacy, and community outreach. She has an M.A. from UC Davis in international agricultural development and received a research and innovation fellowship for agriculture from the UC system. She served with the International Center for Tropical Agriculture in Vietnam as a graduate student researcher and most recently served as sustainability manager at Taylor Farms. She has served on various sustainability boards and coalitions, including Sustainable Conservation, McDonald's and United Fresh. She currently sits on the board of the Monterey County Food Bank.

KATHIE SOWA*Senior Vice President, Commercial Banking Executive, Bank of America*

Kathie retired from commercial banking at Bank of America where she led teams serving clients with over \$50 million in sales revenue in the Central Valley and Central Coast of California, including clients from Redding to Bakersfield and Salinas/Monterey. Kathie was active in the banking industry and the Sacramento

community. She was 2017-18 chair of the Western Bankers Association and continues to serve on the board. She serves on the Board of Advisors for UC Davis and on the site board of City Year Sacramento, serving as chair for 2 years. City Year deploys more than 60 skilled AmeriCorps members to seven schools, working to increase student success and graduation rates. She previously served nine years on the board of the United Way California Capital Region. She graduated with a BBA in Real Estate Finance from Eastern Michigan University and an MBA from Loyola Marymount University. She is a graduate of the Pacific Coast Banking School and a certified Six Sigma Greenbelt.

CONNIE STEWART*Executive Director of Initiatives, Cal Poly Humboldt*

In 2020, Connie was promoted to become Cal Poly Humboldt's Executive Director of Initiatives. Today, she builds partnerships to inspire initiatives that advance Cal Poly Humboldt's vision and serve rural communities. To date, as a principal investigator, she has brought in more than \$20 million in external research

funding. Connie also actively represents that community as part of several statewide initiatives. Formerly, she worked for 14 years at the Northcoast Environmental Center and for six years as a state legislative field representative for one of the largest rural districts in California. In 1996, she was elected to the Arcata City Council and served two terms as Mayor, where she focused on energy efficiency policy, infrastructure, and land use planning. She helped create the Redwood Coast Energy Authority. In 2009, she became executive director of the California Center for Rural Policy, a research center committed to informing policy, building community, and promoting the health and well-being of rural people and environments. She is also a former member of the Pacific Forest Trust board.

JACQUELINE (JACKIE) TINETTI*Policy Analyst, Council for State Governments West*

Jackie Tinetti leads the Council of State Governments West's (CSG-West) Natural Resources portfolio, covering the dynamic issue areas of water, agriculture, environment, energy, and climate. She brings her enthusiasm in supporting the important policy work of the CSG-West Agriculture & Water

Committee, the Energy & Environment Committee, the Legislative Council on River Governance, and the Colorado River Forum. Jackie is the staff liaison for members in the Alaska and Idaho legislatures. Prior to joining CSG-West, Jackie held a variety of staff and management positions in California state and Sacramento area governments. Jackie graduated from CSU Sacramento.

MARY-ANN WARMERDAM*Senior Vice President, Governmental Affairs, Rural County Representatives of California and Managing Director, Milkshed Partners, LLC*

Mary-Ann has worked on agricultural, natural resource, and rural policy issues, representing both public and private sector entities. She recently rejoined Rural County Representatives of California (RCRC) to lead their Government Affairs team. Prior to that, she was with the Office of State

Controller Betty Yee as Deputy, Environmental Policy. Before joining the Controller's Office, she served as Senior Advocate, Natural Resources and Water for RCRC. She also spent several years as U.S. Regulatory Lead with the Clorox Company, working with key state and federal agencies on chemical management, pesticide, water quality, and related environmental issues. In addition to serving two Governors as director of the California department of pesticide regulation in the early 2000s, Mary-Ann was general manager of Yolo County's flood control and water conservation district; director of the California Farm Bureau Federation's public affairs; and PG&E's state affairs office. Mary-Ann is a partner in the family farm and real estate investment firm with her husband in Yolo County. She has an MBA and BS, summa cum laude, from CSU Fresno and completed the California Agricultural Leadership Program and the Kennedy School of Government's Executive Certification Program. She serves on the Yolo Land Trust.

RODGER WASSON*Owner and President, Wasson & Associates*

Roger formed his Northern California-based consulting firm in 2005 to offer consultancy to the agri-food industry. Using the latest scientific research results and emerging trends in health and nutrition, Wasson provides clients with transformational counsel covering all aspects of producing and marketing

superior products. The company manages the Tomato Products Wellness Council on behalf of growers, processors, and brand companies. The host of the Farm to Table Talk podcast, Rodger and his partner and son, Alec Wasson, focus on the interface between farmers and consumers. Rodger has successfully managed marketing programs for almonds, strawberries, tomatoes, beef, pork, lamb, and wool across the U.S. and globally. Their Illinois family farming heritage led them to launch the podcast as a bridge to better understanding of farm to table perspectives.

CHER WATTE ANGULO*Executive Director, Buy California Marketing Agreement*

Cher is executive director of the Buy California Marketing Agreement (BCMA) which manages the California Grown marketing campaign. Before this, Cher was executive director of the California Asparagus Commission and director of international trade policy at the California Department of Food and

Agriculture. She was also appointed manager of the department's agricultural export program by then Governor Wilson. Prior to her CDFA appointment, Cher was the director of national affairs and research for the California Farm Bureau Federation and legislative assistant to congressman Tony Coelho on the U.S. House of Representatives committee on agriculture. She is a former member of the Council for Agricultural Research, Extension, and Teaching (CARET) and the U.S. Department of Agriculture's agricultural trade advisory committee on fruits and vegetables.

PAUL WEGNER*Owner, Wenger Ranch*

A third-generation farmer, Paul farms almonds and walnuts on the family farm, which includes property purchased by his grandfather in 1910. His farming operations also include sharecropping, custom farm work, and walnut hulling. Paul was elected president of the California Farm Bureau

Federation in December 2009 and was elected to a fourth term in 2015. He is a former president of the Stanislaus County Farm Bureau. In January 2011, he was elected to the American Farm Bureau Federation board of directors and was re-elected in 2013 and 2015. Wenger attended Modesto Junior College before transferring to Cal Poly, San Luis Obispo, where he earned a degree in animal science. Wenger has been active in community affairs, serving in the Salida Volunteer Fire Department, the Hart-Ransom School Board of Trustees, and the Stanislaus Land Trust and Agricultural Pavilion boards.

EX-OFFICIO MEMBERS

WADE CROWFOOT

Secretary, California Natural Resources Agency



Wade was appointed California Secretary for Natural Resources by Governor Newsom in January 2019. He oversees an agency of 19,000 employees charged with protecting and managing California's diverse resources. As a member of the Governor's cabinet, he advises the Governor on natural

resources and environmental issues. Crowfoot brings over two decades of public policy and environmental leadership to the office, with expertise in water, fisheries, climate, and sustainability issues. He most recently served as CEO of the Water Foundation, a nonprofit philanthropy that builds shared water solutions for communities, economy, and the environment across the American West. He received a B.A. in political science from the University of Wisconsin-Madison and earned a master's degree in public policy from the London School of Economics, where he graduated with honors.

GLENDA HUMISTON

Vice President, UC ANR



As Vice President University of California Agriculture and Natural Resources (UC ANR), Glenda brings over 25 years of policy development and program implementation supporting sustainability, including time as a Peace Corps volunteer in Tunisia and as a consultant on environmental and agricultural issues

throughout the western states. She served President Obama from 2009-2015 as the California state director for USDA rural development and President Clinton from 1998-2001 as deputy undersecretary for natural resources and environment at USDA. Glenda managed the Sustainable Development Institute at the 2002 World Summit for Sustainable Development in South Africa and the 2006 World Water Forum in Mexico City. She earned her Ph.D. in environmental science, policy, and management from UC Berkeley, a master's in international agricultural development from UC Davis and bachelor's in animal science from Colorado State University.

KAREN ROSS

Secretary, California Department of Food and Agriculture



Karen was appointed secretary of CDFA by Governor Brown in 2011 and reappointed by Governor Newsom in 2019. She has extensive leadership experience on diverse agricultural issues nationally, internationally, and in California. Prior to CDFA, Secretary Ross served as chief of staff for USDA

Secretary Tom Vilsack. She served as President of the California Association of Winegrape Growers (CAWG) from 1996-2009, and as vice president of the Agricultural Council of California from 1989-1996. Among Karen's many achievements at CAWG was the development of the nationally recognized Sustainable Winegrowing Program, which assists wine grape growers in maintaining the long-term viability of agricultural lands and encourages them to provide leadership in protecting the environment, conserving natural resources, and enhancing their local communities. Karen grew up as a 4-H kid on a farm in western Nebraska. She and her husband, Barry, own 800 acres of the family farm, where her younger brother, a fourth-generation farmer, grows no-till wheat and feed grains and raises beef cattle. The Secretary has a B.A. from the University of Nebraska-Lincoln and is a graduate of the Nebraska Ag Leadership program.

CYNTHIA LARIVE

*Chair, UC ANR Governing Council
Chancellor, UC Santa Cruz*



Cynthia is Chancellor of UC Santa Cruz, a public research institution known worldwide for high-impact research, interdisciplinary solutions to global challenges, and a deep commitment to social and environmental justice. The university is home to the Center for Agroecology, which manages the certified-organic UC Santa Cruz Farm and Alan Chadwick Garden, both internationally known sites for training and research in organic horticulture and agriculture. The campus, designated as an Agricultural Experiment Station, launched a new AgTech Alliance earlier this year. As a first-generation college graduate, a common thread throughout Larive's career has been her commitment to student success, inclusion, and equity. She earned a bachelor's degree from South Dakota State, a master's from Purdue, and a Ph.D. in analytical chemistry from UC Riverside. She is a fellow of the American Association for the Advancement of Science, the American Chemical Society, and the International Union of Pure and Applied Chemistry, and has received campus and national awards for her teaching, research, and leadership.

ACADEMIC ADVISORS

DAVID ACKERLY

*Dean, Rausser College of Natural Resources
UC Berkeley*



David became Dean of UC Berkeley's Rausser College of Natural Resources in 2018. He joined the UC Berkeley Department of Integrative Biology from Stanford in 2005, held the Gill Chair in Natural History from 2010-2015, and served as associate dean of the College of Letters and Science's

Biological Sciences Division. As a plant ecologist and evolutionary biologist, David brings together multidisciplinary teams for research in climate change, biodiversity, and ecology. He is a senior fellow at UC Berkeley's Institute for Data Science and a recipient of the Graduate Division's Distinguished Faculty Mentor Award. He received his B.A. in biology from Yale and his doctorate from Harvard. He is a fellow of the California Academy of Sciences and the Ecological Society of America.

Peter W. Atkinson

*Dean, College of Natural & Agricultural Sciences
UC Riverside*



Peter, a professor of genetics in the department of entomology, joined UC Riverside in 1997. Prior to his tenure at Riverside, he was a senior research scientist at the Commonwealth Scientific and Industrial Research Organization in Canberra, Australia. A first-generation college student, Atkinson earned his Ph.D.

and B.S., with honors, from the University of Melbourne, Australia. Since joining UC Riverside, he has served in a number of administrative roles within the college, campus, and University of California system. His research focuses on developing and implementing genetic control strategies of pest insects. These area-wide strategies provide environmentally friendly alternatives to the use of conventional approaches.

RAKESH GOEL

Dean, School of Engineering, UC Merced



Rakesh came to UC Merced with extensive leadership experience from Cal Poly, San Luis Obispo, where he held a faculty appointment in civil and environmental engineering for over 25 years, including serving for more than 14 years as executive associate dean and chair of the civil and environmental engineering

department. Goel earned his B.Tech. in civil engineering from the Indian Institute of Technology in Delhi, India and his M.S. and Ph.D. in structural engineering from UC Berkeley. He is a fellow of the American Society of Civil Engineers (ASCE) and the Structural Engineering Institute, a registered civil engineer in California, and a certified safety assessment program worker for the California Office of Emergency Services. Goel is a national and international leader in his discipline of earthquake analysis and design of structures. His work has been adopted by seismic codes and guidelines in the U.S., such as ASCE 7-02 and FEMA-356. He has authored and co-authored more than 150 technical publications. Goel was awarded the Huber Research Prize and Norman Medal by the ASCE.

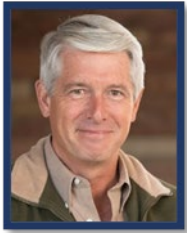
STACY PHILPOTT

Dean, Social Sciences Division, UC Santa Cruz



Stacy completed her B.S. degree at the University of Washington and went on to complete her Ph.D. in ecology and evolutionary biology at the University of Michigan. For her outstanding contributions in ecology, specifically in the areas of agroecology, trophic interactions, community assembly,

insect ecology, and relationships between biodiversity and ecosystem services; and for significant contributions in teaching, mentoring, curriculum development, and promoting women and students of color, she was elected an FSA fellow in 2021. Her research is centered around the intersection of agroecology and conservation biology and is generally aimed at understanding how agroecological management of farms and landscapes can contribute to biodiversity conservation, sustainable agricultural production, and to improvement of farmer well-being. One of the deciding factors of her research is the desire to advance the knowledge of basic ecological principles and find practical ways to apply them. Two projects that display applications of her research are her coffee agroecosystems in Mexico and urban agroecosystems in California.

MARK D. STETTER*Dean, Veterinary Medicine, UC Davis*

Mark became dean of the Davis School of Veterinary Medicine in October 2021. His areas of research and treatment expertise are diverse within his primary emphasis on wildlife and zoo animals. From 2012 to 2021, Stetter was dean and professor in the College of Veterinary Medicine and Biomedical Sciences at

Colorado State University. His significant contributions there were numerous and transformative. He helped drive the creation of a new medical education program in partnership with the University of Colorado School of Medicine and helped launch numerous diversity, equity, and inclusion initiatives. In addition, he was instrumental in the college raising over \$370 million for new buildings, student scholarships, endowed positions, and research programs, among other uses. Stetter earned both his B.S. in biochemistry and his D.V.M. from the University of Illinois at Urbana-Champaign.

ASHLEY STOKES*Dean, College of Agricultural and Environmental Sciences, UC Davis*

Ashley joined UC Davis as dean of the College of Agricultural and Environmental Sciences in July 2025 from the University of Tennessee, where she was a professor of veterinary large animal clinical studies. Stokes also served as dean of the University of Tennessee Institute of Agriculture's UT

Extension from 2021 to 2024 and oversaw a \$100 million budget and 1,000 faculty and staff. She has more than 30 years of experience in higher education, including six years at Colorado State University, where she was associate vice president for engagement and extension, assistant dean for admissions and student success, and interim senior director of CSU Online. While at the University of Hawaii at Manoa, Stokes was the sole veterinary extension specialist serving the state and several western Pacific countries. She earned her B.S. in physiological psychology from the University of Alabama, a D.V.M. and a Ph.D. in cardiovascular physiology and pharmacology from Louisiana State University, and an M.B.A. from Colorado State University. She was inducted into the Academy of Veterinary Consultants in 2014.