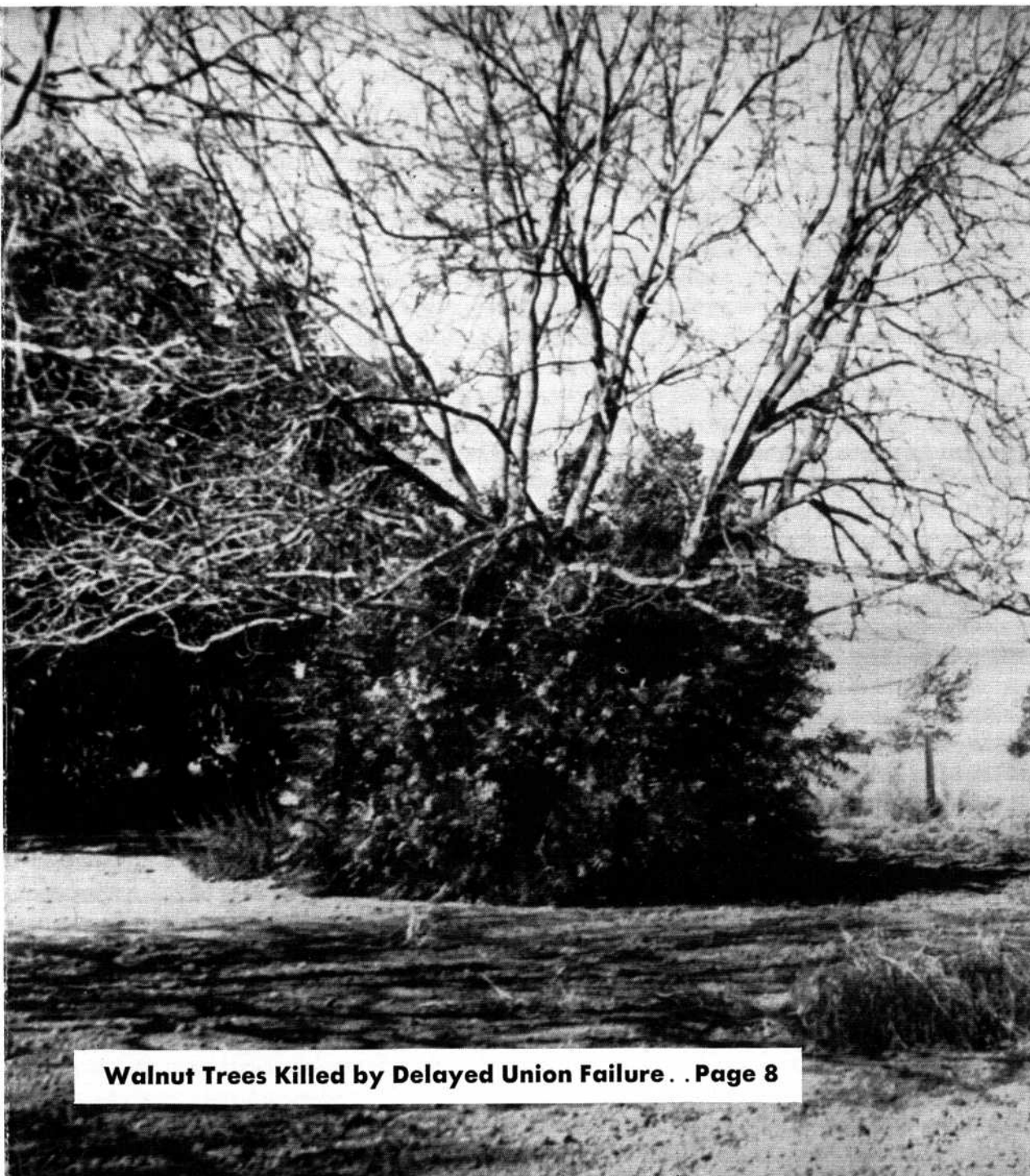




Division of Agricultural Sciences, University of California

California AGRICULTURE

Reports of Progress in Research by the California Agricultural Experiment Station



Volume 13 Number 3

MARCH
1959

Rural-Urban
Fringe Problems
Page 2

Hybrid Cotton
Breeding Program
Page 3

Stem Borer Found
on Safflower
Page 4

Lime-Induced
Chlorosis
Page 6

Disease Resistant
Tomato Varieties
Page 7

Blackline in
Walnut
Page 8

Evaluation of New
and Old Aphicides
Page 10

Ponderosa Pine
Planting Stock
Page 11

Root Injury in
Solution Tests
Page 12

Use of Sorptive
Dusts on Fleas
Page 13

Migrations of the
Ladybird Beetle
Page 15

Walnut Trees Killed by Delayed Union Failure . . Page 8