



CALIFORNIA AGRICULTURE

Volume 21

Number 7

JULY

1967

**Russian Thistle
Germination**

Page 2

**Seed Contamination
In Halo Blight
Transmission**

Page 3

**Spray Treatments
For Olive Abscission**

Page 5

**Chemical
Identification
Of Pear Species
For Rootstocks**

Page 8

**Diagnoses of
Pear Decline
And Rootstock
Identification**

Page 10

**Research
Previews**

Page 11

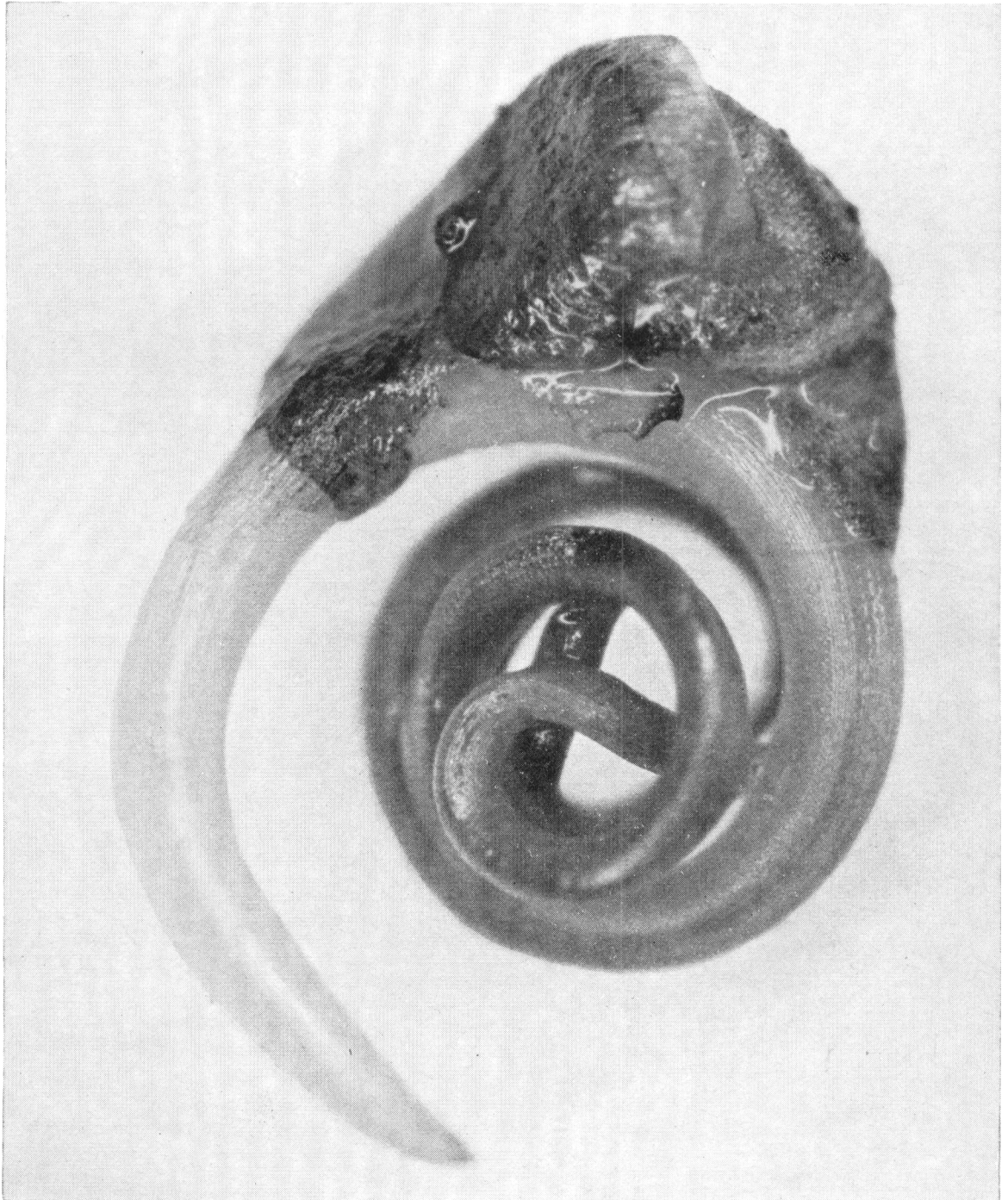
**Light Traps For
Detection of Moths
Of Cabbage Looper
And Bollworm**

Page 12

**Dual-Use
Return-Water
Irrigation**

Page 14

Russian thistle seed 61 minutes after being exposed to water. Spiral action of the unwinding embryo forces root into loose soil (see page 2).



Reports of Progress in Research by the California Agricultural Experiment Station