



DIVISION OF AGRICULTURAL SCIENCES • UNIVERSITY OF CALIFORNIA

# CALIFORNIA AGRICULTURE

Volume 15

Number 7

JULY  
1961

**Changes in Costs of  
Vegetable Production**

Page 2

**Influence of Soil Type  
on Reforestation**

Page 4

**Young Growth Timber  
Taxation Studies**

Page 5

**Brief Reports  
on Research**

Page 6

**Materials for  
Livestock Shades**

Page 7

**Irrigated Pasture  
Management**

Page 9

**Copra Meal Additive  
for Dairy Cattle Feed**

Page 10

**Fly Control in  
Ranch Buildings**

Page 11

**Insecticide Resistance  
in Grape Leafhoppers**

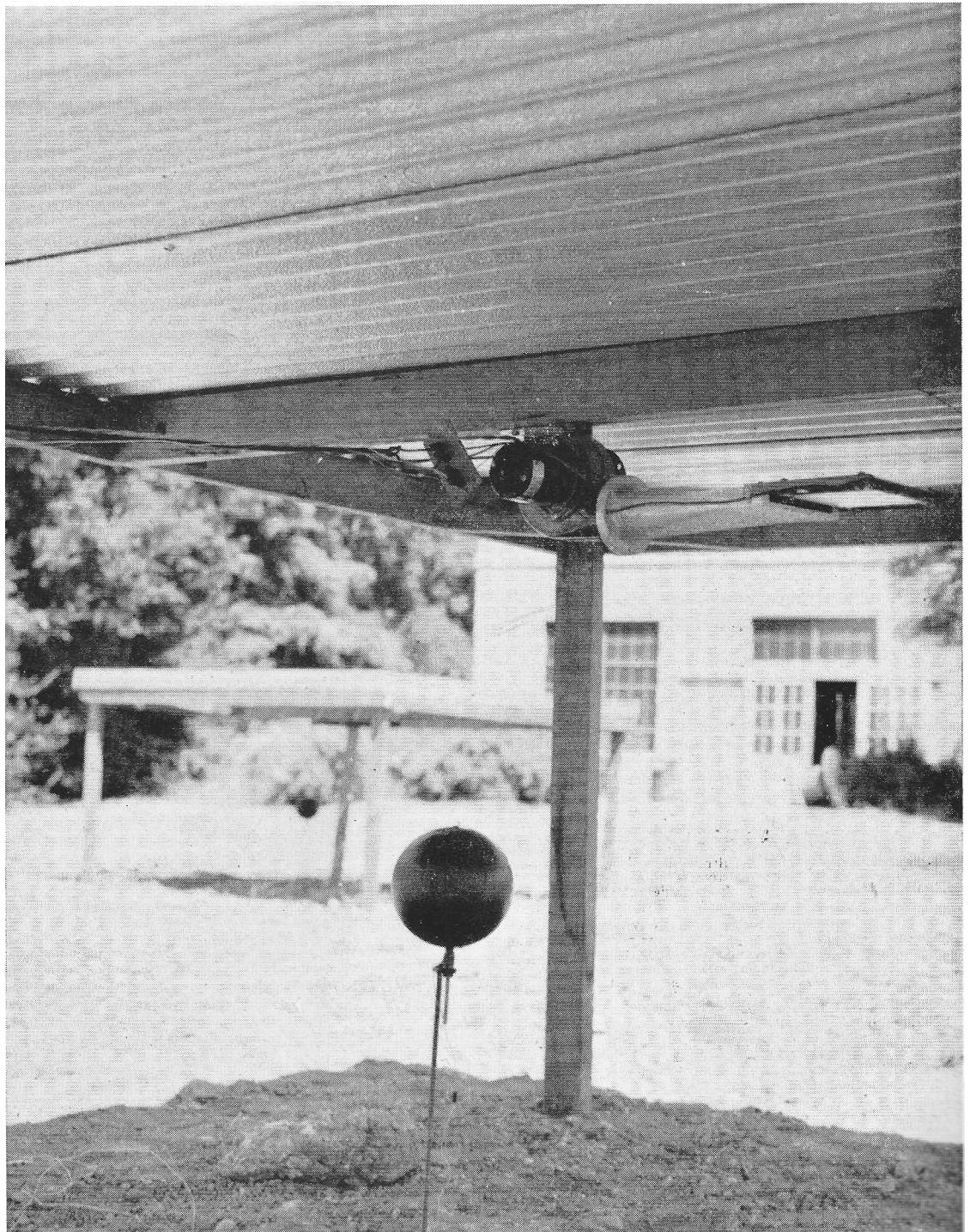
Page 13

**Morning-Glory Leaf  
Miner on Sweet Potato**

Page 15

**Radiant heat load  
reduction by shade  
materials tested**

Page 7



**Reports of Progress in Research by the California Agricultural Experiment Station**