



DIVISION OF AGRICULTURAL SCIENCES • UNIVERSITY OF CALIFORNIA

CALIFORNIA AGRICULTURE

Volume 20

Number 11

NOVEMBER

1966

**Promone Implants
For Heifers
In the Feedlot**

Page 2

**Clipping Tomato
Plants Aids
Maturity Control**

Page 4

**Tile Drainage
Tests in
Contra Costa**

Page 6

**Prebloom Thinning
Thompson Grapes
Feasible with
GA₃ Bloom Sprays**

Page 8

**Temperature Patterns
In Poly-tube-vented
Greenhouse**

Page 10

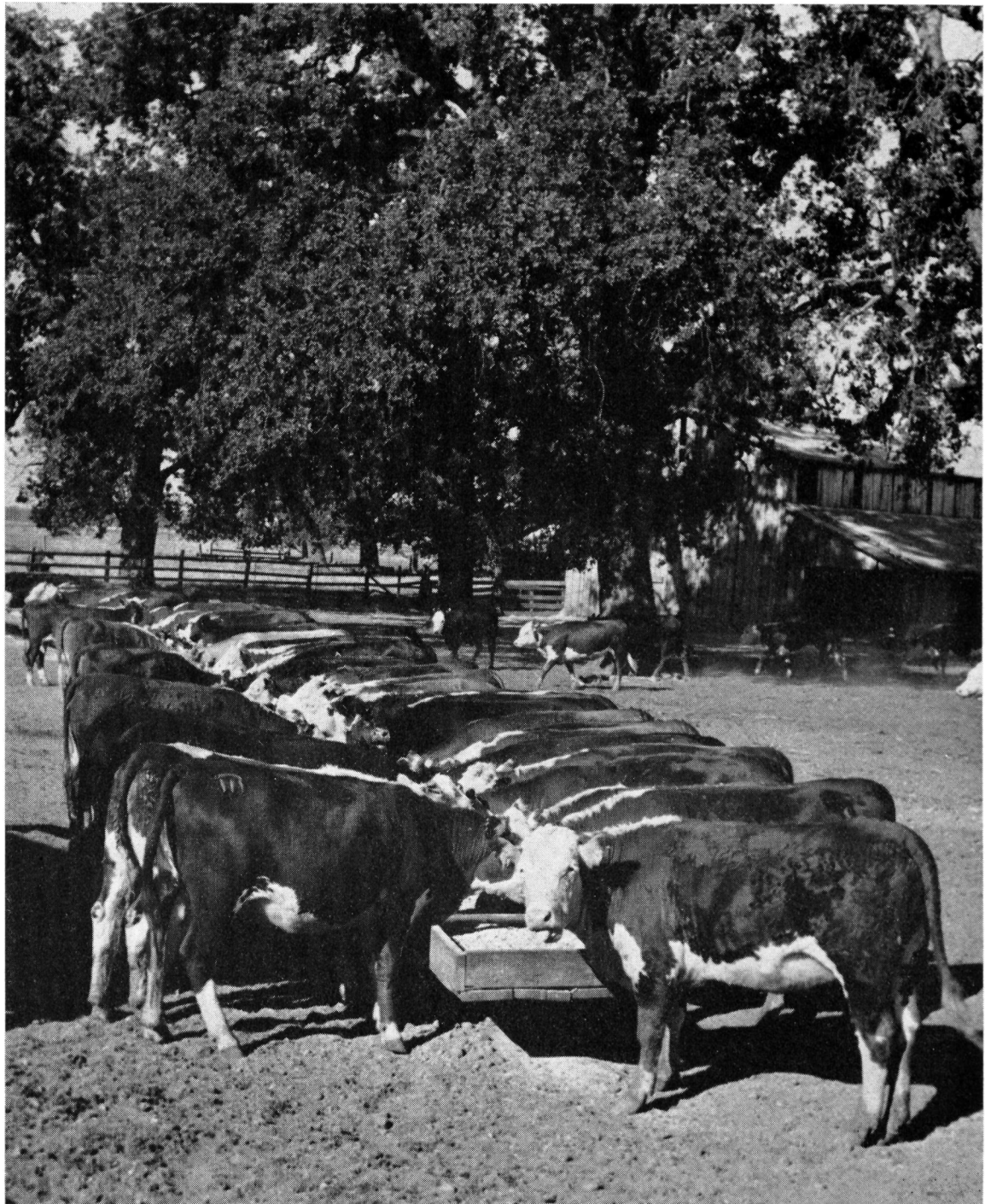
**Sodium Injury to
Chrysanthemum
Cuttings**

Page 12

**Controlling Rhizopus
Soft Rot in
Sweet Potatoes**

Page 14

Heifers at feed bunks in oak-shaded corral area at Roney Brothers Ranch, Butte County, during hormone-implant studies (see article on page 2).



Reports of Progress in Research by the California Agricultural Experiment Station