



DIVISION OF AGRICULTURAL SCIENCES • UNIVERSITY OF CALIFORNIA

CALIFORNIA AGRICULTURE

Volume 29

Number 4

APRIL

1975

**Biological
Control of
Russian Thistle**

Page 3

**Food System
Coordination**

Page 4

**Urbanization
and Streamflow
in Berkeley Hills**

Page 6

**Corn and Oat
Silage Preservation**

Page 8

Sealing Bunker Silos

Page 10

**Jajoba Seed
Development**

Page 12

**Lesion Nematode
Control in Apples**

Page 14

**Root-knot
Nematode Control
in Cantaloupe**

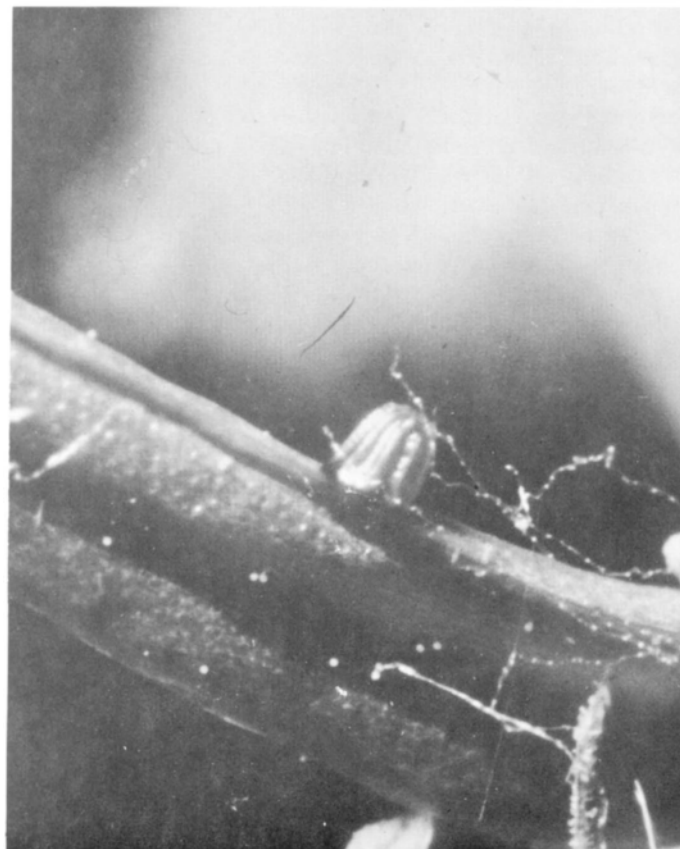
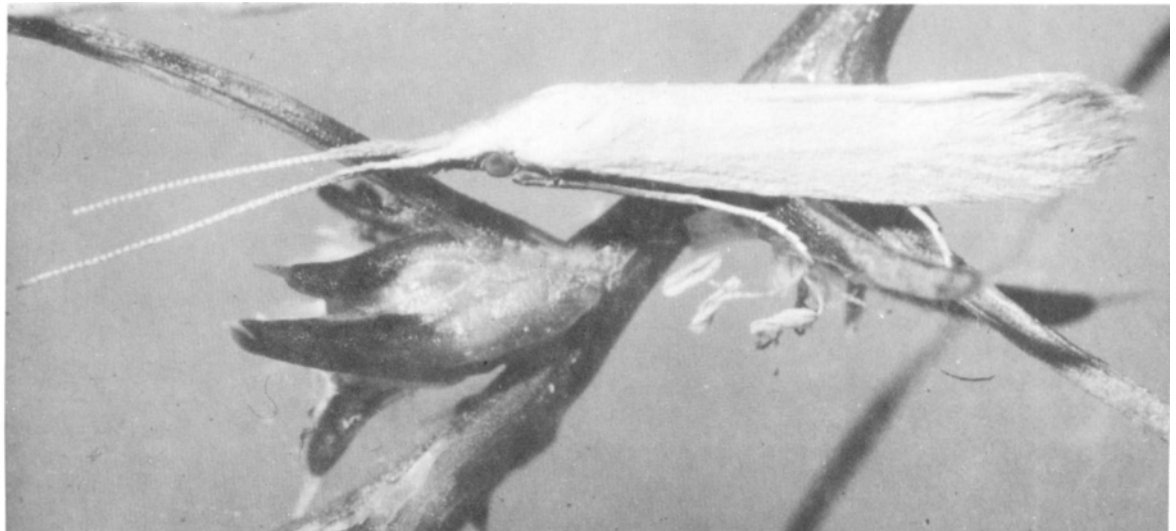
Page 15

**Surface Runoff
in Dairies**

Page 16

**Sunburn Protection
for Payne Walnuts**

Page 18



*Moth introduced for biological control of Russian thistle: (top) adult *Coleophora parthenica*, 12x; (lower left) egg of moth, 30x; (lower right) larva in stem of thistle, 10x.*

CAGRA 3 29 (4) 1-16 1975

Reports of Progress in Research by the Agricultural Experiment Station and Extension Service