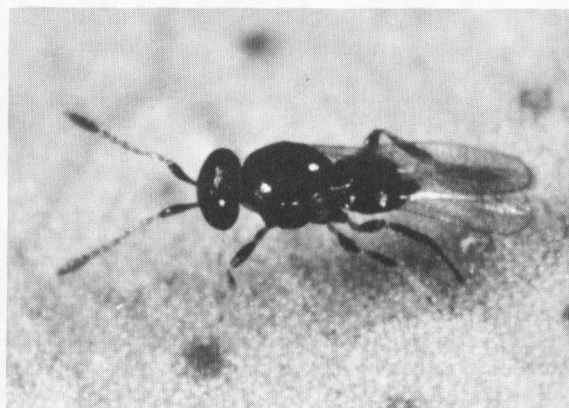
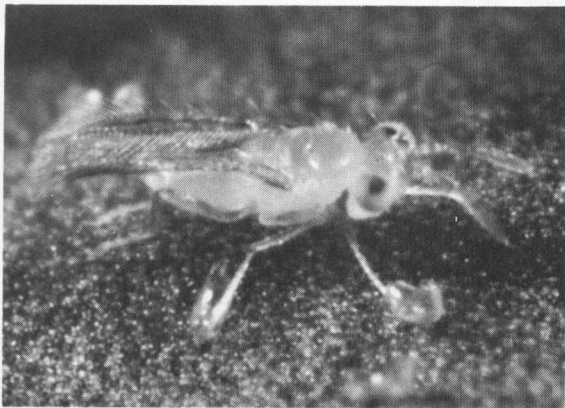




California Agriculture

May 1976

VOLUME 30 NUMBER 5



Biological Control of
Woolly Whitefly
Page 4

Phosphorus Application
through Drip Irrigation
Page 8

Walnut Blight Control
Page 10

Gibberellin Reduces
Ruby Seedless Set
Page 13

Trellising Thompson
Seedless for Greater Yield
Page 14

Pear and Apple Scab
Control
Page 16

Oat Hay Yields
Page 18

Above left, adult female *Cales noacki*, an import from Chile, and, right, adult female *Amitus spiniferus* from Mexico, both effective parasites of woolly whitefly (below).

(Page 4)