

**Growers in the San Joaquin Valley were surveyed to determine what fraction of their crop residue is field-burned and during what seasons field burning commonly occurs for each crop. Survey results show that only four crops — rice, almonds, walnuts, and wheat — account for 88% of the crop residue burned in the San Joaquin Valley, and 95% of the crop residue burned in the state (exclusive of forestry). Rice and almonds respectively account for 64% and 18% of the residue burned statewide.**



Photos show rice straw fire during a spring burn in February 1990. The fire is propagating against the wind (a so-called "baking" fire), with a visible plume trailing behind. Closeup shows the emission of volatile products (pyrolysates—the yellow smoke in the middle) as the fuel heats ahead of the flame. Also visible is the smoldering afterburn (the grey smoke behind the fire).

## Survey documents open burning in the San Joaquin Valley

Bryan M. Jenkins □ Scott Q. Turn □ Robert B. Williams

Open burning of crop residues in California remains a controversial issue due to the resulting air pollution and real or perceived threats to human health. Last year the open-burning controversy intensified after the discovery of fiber-like silica particles in the smoke from rice straw burns. Although little is known about the health impacts of these particles, increased awareness of the detrimental effects of all types of combustion products, regardless of source, has made the public less tolerant of agricultural burning. Increasing urban development in agricultural regions and the concomitant decline in ambient air

quality due to increased vehicular use, wood burning, and other residential, commercial, and industrial activities have only exacerbated the problem.

Agricultural burning is commonly practiced in a number of crops for expeditious removal of crop residues, and for disease and pest control. Alternatives to open burning have long been investigated and debated. In recent years several feasible alternatives have emerged, including new markets for residual crop biomass. Principal among these markets is the independent power generation industry developed over the last decade. In California,

about 60 plants have been constructed and now generate roughly 700 megawatts of power through combustion of biomass fuels.

Because they also emit pollutants, such new facilities must reduce or "offset" the emission of similar pollutants elsewhere in the region. Agricultural residues that are normally burned in the field can be claimed in determining the offset requirements. The ability to reduce the emission offset requirements from other sources represents an economic incentive to the power generation sector to utilize agricultural residues as fuel.

## Determining the offset credit

The California Air Resources Board (CARB) has developed a procedure to determine the offset credit permitted to any facility, partly based on the results of this research. The procedure utilizes information on the type and quantity of crop residue used by the facility, the amount of pollutant of each type normally emitted by the residue when burned in the field (called the emission factor), the fraction of each crop residue that historically has been burned in the field (called the historical burn fraction, or HBF), and the fraction of residue that is normally burned during any season of the year (called the quarterly distribution factor, or QDF). The procedure also uses information on the proximity of the fuel source (field) to the power plant site. Fuel obtained from within a 15-mile radius of the plant accrues a higher offset than fuel from outside this radius. To develop the procedure, CARB requires information on the values of HBF and QDF for various crops in the state.

## Survey scope and methods

This article describes the results of a survey conducted by UC Davis for CARB to quantify the values of HBF and QDF for six field crops (barley, corn, cotton, rice, sorghum and wheat) and 10 fruit and nut crops (almonds, apricots, cherries, grapes, nectarines, oranges, peaches, pistachios, plums and walnuts) in the state. From the data collected by the survey, an emission inventory for these crops was also derived. The inventories for five principal pollutants are reported here. Work on character-

izing other emissions from agricultural fuels is continuing.

Values of HBF and QDF were obtained from a telephone survey of growers in four counties in the San Joaquin Valley air basin (SJVAB): Fresno, Kern, Merced, and Stanislaus. The survey was undertaken because the only other direct source of information, the agricultural burn records collected by the local air pollution control districts, proved inaccurate. In several cases there was substantial over-reporting of burning and a lack of consistency throughout. Other techniques, such as satellite reconnaissance for determination of HBF, had been attempted by others but proved infeasible.

Individual growers were selected at random from the 1988 registered materials lists in each of the four counties. Respondents were questioned about the types of crops grown, total acreage in each crop, acreage burned, and month in which the residue was burned. Respondents were also asked how their current practice (reported for the most recent crop year) corresponded to past practices, and what expectations they had for changing the amount of burning in the future. The latter questions were intended to obtain purely qualitative information as to how typical the survey responses might be. Because many growers do not routinely keep records of burning practice, a survey of this type was not deemed suitable for recovering information on burning beyond the most recent year. Responses on crop type and total acreage were checked against data reported in the registered materials lists to assess the veracity of each re-

sponse. In only one interview was there evidence of false reporting, and its results were eliminated from further analysis.

The survey was designed to contact at least 5% of the growers of each crop in each county and accumulate information on at least 10% of the crop area. When the grower sample size was less than 10 based on the 5% criterion, the minimum sample size was taken as 10. If there were fewer than 10 growers for any crop, an effort was made to contact them all.

We interviewed 609 growers. Because some growers produced more than one crop, 1,226 responses were received on all 16 crops. The crop area encompassed by the survey was 417,877 acres, or 15% of the total area in these crops in the SJVAB, based on acreage numbers compiled by the California Department of Food and Agriculture (CDFA). The 16 crops surveyed account for 89% of the area harvested for all types of fruit, nut, and field crops in the SJVAB and 83% of the area harvested for these crops in the state. The SJVAB by itself accounts for 62% of the acreage of all fruit, nut, and field crops in the state, and 67% of the area in the 16 crops surveyed. Vegetable crops were not included in the survey because their residues are not normally burned.

## Computations

The value of HBF for each crop was computed by dividing the reported acreage burned by the reported total acreage harvested. Results for the four counties combined are listed in table 1. The seasonal profiling of emissions represented by the values of QDF for each crop were

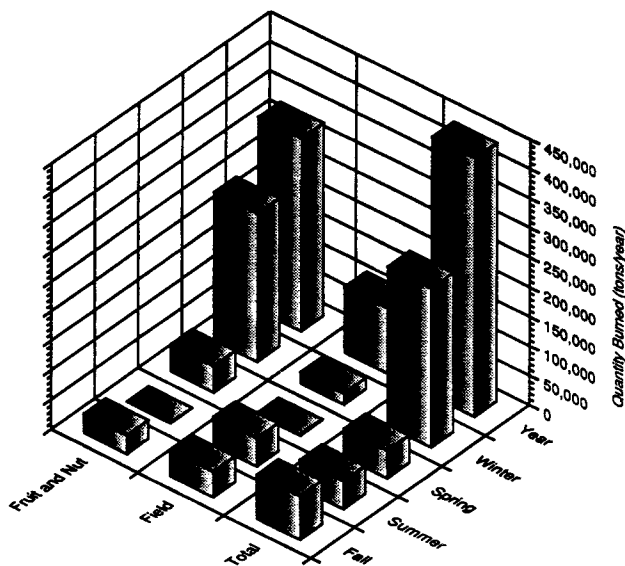


Figure 1. Seasonal distribution of agricultural burning in the San Joaquin Valley air basin.

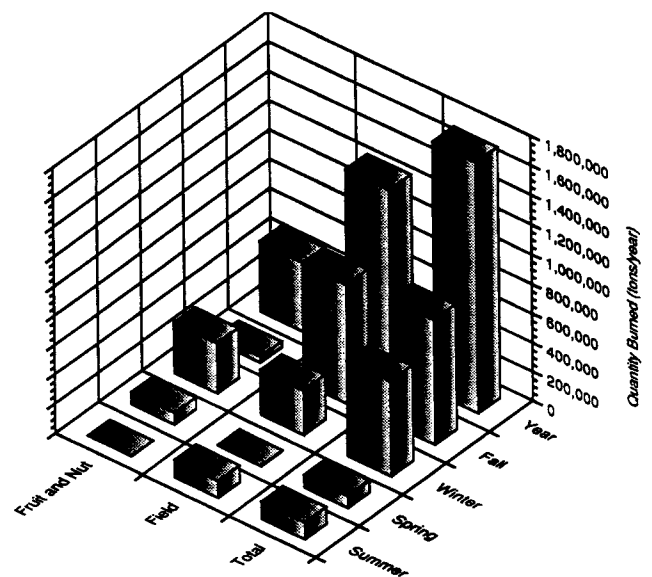


Figure 2. Seasonal distribution of agricultural burning in California.

**TABLE 1. Historical burn fractions (HBF) and quarterly distribution factors (QDF) determined for the 16 crops surveyed**

Crop	HBF*	QDF†			
		Winter	Spring	Summer	Fall
..... % .....					
<b>Fruit and nut:</b>					
Almonds	84	88	2	0	10
Apricots	60	69	4	0	27
Cherries	56	41	31	17	12
Grapes	1	60	33	0	7
Nectarines	2	79	21	0	0
Oranges	1	50	50	0	0
Peaches	9	45	55	0	0
Pistachios	14	49	51	0	0
Plums	6	64	25	0	11
Walnuts	95	43	52	0	5
<b>Field:</b>					
Barley	7	0	17	83	0
Corn	3	52	0	0	48
Cotton	0	0	0	0	0
Rice	99	27	0	0	73
Sorghum	0	0	0	0	0
Wheat	11	0	0	97	3

\*Computed by dividing the reported acreage burned by the reported total acreage harvested.

†Computed by summing the monthly values of area burned over each quarter and dividing by the total area burned in the year.

**TABLE 2. Crop residue burned in the San Joaquin Valley for the 16 crops surveyed**

Crop	Winter	Spring	Summer	Fall	Year	Percent of total
..... (dry tons/period) .....						
<b>Fruit and nut:</b>						
Almonds	205,086	4,361	0	23,706	233,153	53
Apricots	8,403	488	12	3,222	12,126	3
Cherries	533	398	218	156	1,304	0
Grapes	5,959	3,235	0	676	9,870	2
Nectarines	466	125	0	0	591	0
Oranges	264	267	0	0	531	0
Peaches	2,350	2,883	0	4	5,237	1
Pistachios	220	225	0	0	445	0
Plums	1,466	567	0	252	2,285	1
Walnuts	26,232	32,340	0	3,071	61,643	14
Total fruit and nut	250,979	44,889	230	31,087	327,185	75
<b>Field:</b>						
Barley	0	1,668	8,217	0	9,884	2
Corn	5,242	0	0	4,934	10,176	2
Cotton	0	0	0	0	0	0
Rice	13,636	0	0	37,145	50,781	12
Sorghum	0	0	0	0	0	0
Wheat	0	0	38,963	1,209	40,173	9
Total Field	18,878	1,668	47,180	43,288	111,014	25
Grand total	269,857	46,557	47,410	74,375	438,199	100

computed by summing the monthly values of area burned over each quarter and dividing by the total area burned in the year.

Initially, profiling was attempted on a monthly basis, but the reliability of the survey results did not seem to warrant the level of detail implied by a monthly accounting. Growers could very often remember the season in which they burned residues, but not the specific month. Profiling was therefore done on a seasonal (quarterly) basis. The resulting values of

QDF are also listed in table 1 for each crop.

Most respondents (>90%) thought their current burning practice was typical of recent years; 74% percent thought they would burn about the same in the future, unless prevented by further regulation, 16% thought they would burn less, and 10% thought they would burn more. About 7% expressed an unsolicited desire to find alternatives to burning. A few growers were already marketing residue of one sort or another.

The values of HBF and QDF derived

from the survey were used in computing crop-specific contributions to five major pollutant emissions in both the SJVAB and the state as a whole. For each crop, the total pollutant emission was derived from the total acreage harvested, the crop residue yield, the emission factor for each pollutant, and the values of HBF and QDF. The pollutants considered were particulate matter (PM), carbon monoxide (CO), hydrocarbons (HC), oxides of nitrogen (as NO<sub>2</sub>), and sulfur (as SO<sub>2</sub>). Total acreage harvested was determined from statistics compiled by CDFA, crop residue yields were taken from UC extension study results, and emission factors were taken from data developed for the CARB.

### Survey findings

#### Crop pollutant emission inventory.

The seasonal distributions of total residue burned for both fruit and nut crops and field crops are illustrated in figure 1 for the SJVAB and figure 2 for California. In the SJVAB, the greatest amount of burning (62% of biomass) occurs in the winter (December through February), primarily due to the large acreage in fruit and nut crops in the basin. For California as a whole, the majority of the burning (50% of biomass) occurs in the fall (September through November), although winter burning is still a large fraction of the total (38%).

The difference in seasonal profiles between the SJVAB and the state is due primarily to the large acreage of field crops in the Sacramento Valley. The quantity of residue burned by crop is given in table 2 for the SJVAB and table 3 for the state. Four crops — rice, almonds, walnuts, and wheat — account for 88% of the biomass burned in the SJVAB, and 95% of the biomass burned in the state (exclusive of forestry). Rice and almonds account for 82% of the agricultural biomass burned in the state, with rice accounting for 64% and almonds, 18%.

Emissions from the 16 crops surveyed in the SJVAB are listed in table 4 along with their seasonal distributions. A similar accounting appears in table 5 for California. Statewide, agricultural burning annually releases about 5,300 tons of particulate matter, 88,000 tons of carbon monoxide, 7,100 tons of hydrocarbons, 4,700 tons of nitrogen oxides, and 2,200 tons of sulfur products. Compared to total statewide emissions of these five pollutants, agricultural burning accounts for 0.13% of particulate matter, 1.27% of carbon monoxide, 0.27% of hydrocarbons, 0.38% of nitrogen oxides, and 1.16% of sulfur emissions (table 6).

To put these numbers in perspective, a comparison of emissions from agricultural burning (again excluding forestry) to those from the state's electric utilities appears in table 7. The data on electric utilities are de-

**TABLE 3. Crop residue burned in California for the 16 crops surveyed**

Crop	Winter	Spring	Summer	Fall	Year	Percent of total
..... dry tons/period .....						
<b>Fruit and nut:</b>						
Almonds	267,263	5,683	0	30,893	303,839	18
Apricots	12,450	723	18	4,775	17,966	1
Cherries	667	498	273	195	1,633	0
Grapes	7,703	4,182	0	874	12,759	1
Nectarines	472	126	0	0	598	0
Oranges	371	375	0	0	746	0
Peaches	3,337	4,093	0	6	7,435	0
Pistachios	234	239	0	0	474	0
Plums	1,510	584	0	260	2,354	0
Walnuts	51,338	63,292	0	6,009	120,640	7
Total fruit and nut	345,345	79,797	291	43,011	468,445	27
<b>Field:</b>						
Barley	0	4,035	19,879	0	23,914	1
Corn	9,930	0	0	9,346	19,276	1
Cotton	0	0	0	0	0	0
Rice	294,381	0	0	801,894	1,096,275	64
Sorghum	0	0	0	0	0	0
Wheat	0	0	94,977	2,948	97,924	6
Total Field	304,311	4,035	114,856	814,187	1,237,389	73
Grand total	649,656	83,832	115,147	857,199	1,705,834	100

**TABLE 4. Total emissions by pollutant type for fruit, nut, and field crops in the San Joaquin Valley air basin**

	Winter	Spring	Summer	Fall	Year
..... tons/period .....					
Particulate matter	434	71	175	205	885
Carbon monoxide	5,923	950	3,014	3,346	13,234
Hydrocarbons	706	118	229	286	1,340
Oxides of nitrogen	693	119	133	200	1,145
Sulfur dioxide	119	18	78	82	298

**TABLE 5. Total emissions by pollutant type for fruit, nut, and field crops in California**

	Winter	Spring	Summer	Fall	Year
..... tons/period .....					
Particulate matter	1,627	131	425	3,075	5,258
Carbon monoxide	25,908	1,758	7,333	52,754	87,752
Hydrocarbons	2,322	215	558	4,054	7,149
Oxides of nitrogen	1,733	215	322	2,389	4,659
Sulfur dioxide	623	35	190	1,358	2,206

**TABLE 6. Agricultural burning emissions (ABE) as a fraction of total emissions (TE) in the San Joaquin Valley air basin (SJVAB) and in California**

	SJVAB: ABE	SJVAB: TE	SJVAB: ABE/TE	State: ABE	State: TE	State: ABE/TE
	tons/yr	tons/yr	%	tons/yr	tons/yr	%
Particulate matter	885	730,000	0.12	5,258	4,015,000	0.13
Carbon monoxide	13,234	730,000	1.81	87,752	6,935,000	1.27
Hydrocarbons	1,340	438,000	0.31	7,149	2,664,500	0.27
Oxides of nitrogen	1,145	204,400	0.56	4,659	1,241,000	0.38
Sulfur dioxide	298	27,375	1.09	2,206	189,800	1.16

**TABLE 7. Agricultural burning emissions (ABE) relative to electric utility emissions (EUE) in California**

	State ABE	State EUE	State ABE/EUE
	tons/yr	tons/yr	%
Particulate matter	5,258	2,519	209
Carbon monoxide	87,752	25,185	348
Hydrocarbons	7,149	11,315	63
Oxides of nitrogen	4,659	51,100	9
Sulfur dioxide	2,206	4,015	55

rived from the emission inventory published by CARB, and include emissions from fuel burning power plants (including those burning biomass).

**Agricultural burning versus electric power.** Unlike much of the nation, California generates little electric power from coal; most of the fuel-derived power is generated by the combustion of natural gas, which is a relatively clean fuel. However, the electricity generation sector has been subject to substantial emission regulation, which partially accounts for its relatively lower contribution to statewide pollutant emissions. As shown in table 7, the emissions of particulate matter and carbon monoxide from agricultural burning are two to three times higher than those from the electricity generating sector of the state. Emissions of hydrocarbons and sulfur from agricultural burning are about half those from the power sector, and oxides of nitrogen only about 10%. This is largely due to the lower flame temperature in field burns compared to industrial boilers. Locally, of course, emissions from agricultural burning can have significant impacts on ambient air quality which are not reflected in the values of table 6.

## Discussion

The use of the seasonal emission profiles embodied in the quarterly distribution factors (QDFs) will likely reduce the economic incentives to power plants utilizing agricultural fuels. When emission offsets are computed on an annual basis, full credit is available from each offset fuel. But in seasonal profiling, if a fuel is consumed by the plant during a season when that fuel is not typically burned in the open, then little or no credit would be available.

In principle, the use of QDF's would protect seasonal ambient air quality, because the lack of offset credits from agricultural burning would require the installation of additional pollution control equipment, the mitigation of nonagricultural sources, or the seasonal management of power plant fuels. However, seasonal management of fuels might prove difficult because of the physical and chemical properties of various fuels and the potential need to blend fuels to prevent boiler fouling. The lack of offsets might also preclude the construction of new power generating facilities that would use agricultural or other biomass fuels. This issue needs to be carefully considered in determining future state policy.

## Conclusions

The need for open burning varies from crop to crop. For some crops, burning is done to control diseases and pests in subsequent crops. In other cases, burning is practiced for strictly economic reasons. In

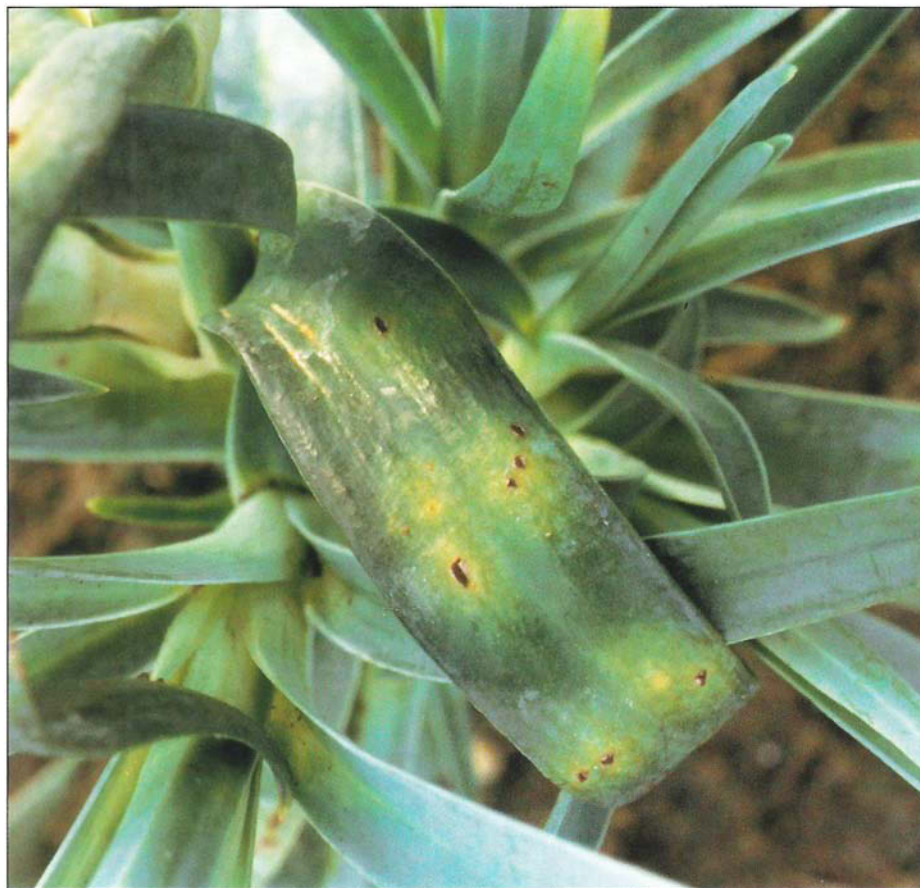
most cases, there are multiple reasons for burning. Survey results show the burning of wheat straw appears to be primarily a matter of convenience, to rapidly remove straw before soil preparation. The high HBF values for almond and walnut residues are due largely to the type of harvesting technology employed for the nuts from these crops. Tree prunings in the rows, whether shredded or not, interfere with the sweeping operation. Alternate harvesting methods or greater utilization of the prunings (such as by power plants) would reduce the need to burn.

Rice straw disposal is the key issue, and one not readily solved. While alternatives to rice straw burning do exist, none are as inexpensive as burning, and some may entail significant economic impact. If managed properly they appear to provide adequate disease control. The development of suitable alternatives, including power generation and soil incorporation, has been the subject of much research, most of which continues today. The advantages and disadvantages of harvesting and utilizing straw, or adapting agronomic practice to accommodate the straw, are many.

In reality, the debate over agricultural burning in California appears to be one of whether state policy should or should not protect burning privileges for the four crops that account for nearly all atmospheric emissions from this source. Currently, Article 3 of the Health and Safety Code expresses the legislative intent that agricultural burning should not be prohibited because of the importance to the state of a viable agricultural economy. From the public perspective, the debate over burning is not principally an economic one, because the external costs of health impacts cannot be measured, and food costs are relatively low for the majority of the population. From an agronomic standpoint, burning remains both an economic and environmental question, particularly if chemical or other means must be found to control pests and diseases that are legitimately controlled by burning.

Decisions on agricultural burning should rightly include the equitable application of regulations to forestry, which, from controlled fires, emits roughly the same amount of pollutants as agriculture. Alternatives to open burning exist, but a concerted effort by the state is needed to develop incentives for their implementation. The same can be said for the entire issue of environmental quality in California, in which agricultural burning plays a locally important, but overall minor, role.

*B.M. Jenkins is Associate Professor, and S.Q. Turn and R. B. Williams are Graduate Research Assistants, Agricultural Engineering Department, UC Davis.*



Rust on greenhouse carnations.

## Tests compare fungicides for control of rust on greenhouse carnations

Donald M. Ferrin □ Roberta G. Rohde

***Four fungicides were tested for control of rust on greenhouse carnations. The most effective fungicides were Plantvax and Systhane; the latter is not currently registered for control of this disease in California.***

Rust of carnations, caused by the fungus *Uromyces dianthi*, occurs commonly on greenhouse-grown carnations in coastal areas of Southern California. The disease occurs throughout the year but is most severe during the cooler, more humid periods of fall through spring when coastal fog is prevalent. The pathogen enters the plant through the stomates and grows between the host cells upon which it feeds.

Masses of the characteristic reddish-brown urediospores are produced within pustules that eventually break through the plant cuticle. These pustules can be found