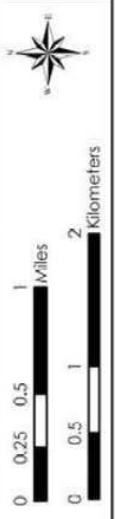
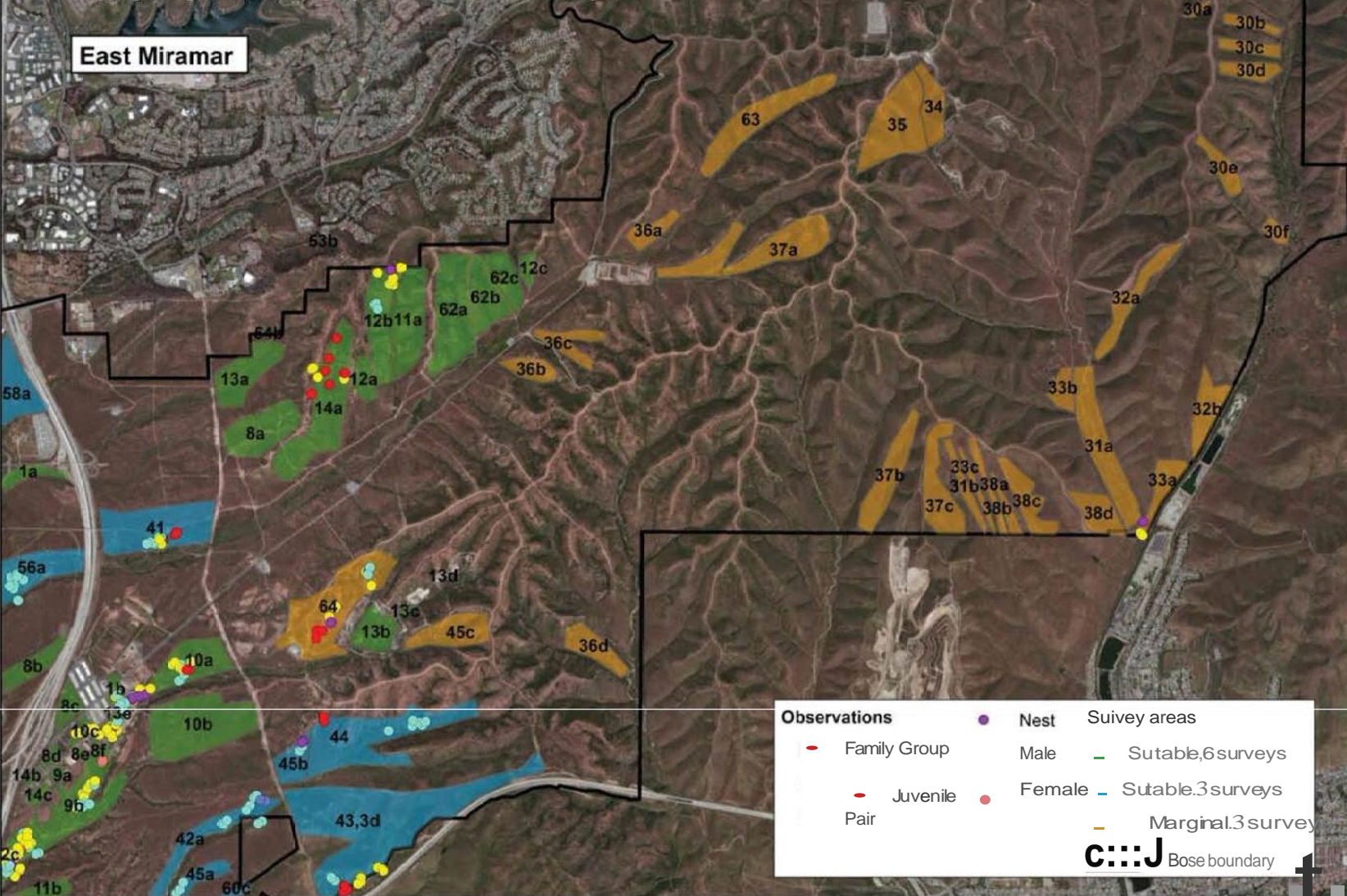


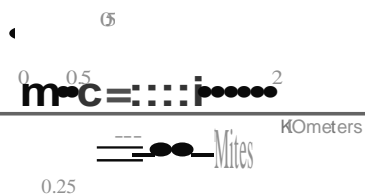
**California Gnatcatcher 2013 Breeding Season Survey Areas  
MCAS Miramar, California**



Service Layer Credits: Source: Esri, DigitalGlobe, GeoEye, I-cubed, USDA, USGS, AEX, Getmapping, Aerogrid, IGN, IGP, swisstopo, and the GIS User Community



California Gnatcatcher 2013 Breeding Season Survey Areas  
MCAS Miramar, California



**ATTACHMENT 2  
DRAFT/FINAL WORK PLAN FORMAT**

Title Page

Table of Contents

	Page
1.0 Introduction	X
2.0 Background	X
3.1 Methods	X
3.2 Permit Requirements	X
3.3 Field Surveys	X
3.4 Geographic Information Systems	X
4.0 Discussion	X
5.0 References	X
6.0 Schedule	X
7.0 Attachment (I) Resumes of Personnel	
8.0 Attachment (II) Copy of US Fish and Wildlife Service Permit	

List of Tables

1. Project Schedule	X
---------------------	---

Note: This is the basic format to be used for the Draft/Final Work Plan. Additional sections/tables/figures should be added to describe any important information is collected or observation during this study that would be compatible with this format.

**ATTACHMENT 3  
PROGRESS REPORT FORMAT**

Title Page

Table of Contents

	Page
1.0 Introduction	X
2.1 Methods	X
2.2 Habitat Surveys	X
2.3 CAGN Surveys	X
3.1 Results	X
3.2 Habitat Surveys	X
3.3 CAGN Surveys	
4.0 Discussion	X
5.0 Preliminary Findings	X
6.0 References	X

List of Tables

1. Dates and Locations of CAGN Surveys	X
2. Preliminary Summary of Findings	X

List of Figures

1. Coastal California gnatcatcher Survey Area and Pair/Lone Territorial Male Locations Identified on MCAS Miramar	X
---	---

Note: This is the basic format to be used for the monthly status reports. Additional sections/tables/figures should be added to describe any important information collected or observation during this study that would be incompatible with this format.

**ATTACHMENT 4  
DRAFT/FINAL REPORT FORMAT**

Title Page

Table of Contents

	Page
1.0 Introduction	X
2.1 Background	X
2.2 Natural History	
2.3 Previous Survey History	
3.1 Methods	X
3.2 Habitat Surveys	X
3.3 CAGN Surveys	X
3.4 GIS Protocol	X
4.0 Discussion	
5.0 References	X

List of Tables, Figures, Attachments

1. Cumulative past survey results	X
-----------------------------------	---

Note: This is the basic format to be used for the Draft/Final Report Format. Additional sections/ tables/ figures should be added to describe any important information collected or observation during this study that would be incompatible with this format.

**ATTACHMENT 5:  
GIS ANNOTATED DATA DIRECTORY**

	<b>Business Data Relationships:</b> N/A <b>Application Link :</b> N/A
--	--

**Sub-Class:** Not Allowed

**Topological Requirements:** None

**Business Data Relationships:** None

**Applications:** None

**DoD Facility Analysis Category (FAC) Codes:** None

**GEOFidelis Data Model 1.0 Entity Type:**

SpecStatSpecArea\_CAGN

**Alias:** CaliforniaGnatcatcherUseArea

**Definition:** Indicates existence of a special status species (California gnatcatcher) by the geographically described geometry either currently, historically, or the species is being recruited into the range.

**Object Type:** Polygon

**Data Structure Source:** SDSFIE 3.0 Gold specialStatusSpeciesArea; GEOFidelis Data Model 3.0; MCIWEST-MCB CAMPEN G-F; MCAS Miramar Environmental Management Department

**Schema Proponent:** Facilities Planning and Conservation Section (MCI Command GF-7); MCAS Miramar EMD

**Justification:** Required to store flora and fauna special species areas at MCIWEST-MCB CAMPEN G-F Installations; MCAS Miramar Integrated Natural Resources Management Plan, Endangered Species Act

**Attributes:**

<b>specialStatusSpeciesIDPK</b>	<p><b>Description:</b> The unique identifier for each SpecialStatusSpecies feature.  <b>EXAMPLE = CAGN2013UAREA00001)</b></p> <p><b>Data Type:</b> String</p> <p><b>Length:</b> 20</p> <p><b>Allow Nulls:</b> No</p> <p><b>Default Value:</b> N/A</p> <p><b>Assigned Domain:</b> N/A</p> <p><b>Data Structure Source:</b> SDSFIE 3.0</p>
---------------------------------	--

	<p><b>Data Source:</b> N/A</p> <p><b>Schema Proponent:</b> Facilities Planning and Conservation Section (MCI Command GF-7)</p> <p><b>Justification:</b> Required as part of SDSFIE 3.0 Gold Schema.</p> <p><b>GEOFidelis Data Model 1.0 Attribute:</b> N/A</p> <p><b>Business Data Relationships:</b> N/A</p> <p><b>Application Link :</b> N/A</p>
<p><b>sdsID</b></p>	<p><b>Description:</b> A unique identifier for all features and objects in the SDSFIE.</p> <p><i>Note: Contractor may leave this field blank. It will be filled by government GIS staff.</i></p> <p><b>Data Type:</b> GUID</p> <p><b>Length:</b> N/A</p> <p><b>Allow Nulls:</b> No</p> <p><b>Default Value:</b> N/A</p> <p><b>Assigned Domain:</b> N/A</p> <p><b>Data Structure Source:</b> SDSFIE 3.0</p> <p><b>Data Source:</b> N/A</p> <p><b>Schema Proponent:</b> Facilities Planning and Conservation Section (MCI Command GF-7)</p> <p><b>Justification:</b> Required as part of SDSFIE 3.0 Gold Schema.</p> <p><b>GEOFidelis Data Model 1.0 Attribute:</b> N/A</p> <p><b>Business Data Relationships:</b> N/A</p> <p><b>Application Link :</b> N/A</p>
<p><b>sdsFeatureName</b></p>	<p><b>Description:</b> The common name of the feature.</p> <p><b>EMD - Allowable entries are "ESTIMATED USE AREA" or "ESTIMATED TERRITORY".</b></p> <p><b>Data Type:</b> String</p> <p><b>Length:</b> 80</p> <p><b>Allow Nulls:</b> Yes</p> <p><b>Default Value:</b> N/A</p> <p><b>Assigned Domain:</b> N/A</p> <p><b>Data Structure Source:</b> SDSFIE 3.0</p> <p><b>Data Source:</b> N/A</p> <p><b>Schema Proponent:</b> Facilities Planning and Conservation Section (MCI</p>



	<p>Command GF-7)</p> <p><b>Justification:</b> Required as part of SDSFIE 3.0 Gold Schema.</p> <p><b>GEOFidelis Data Model 1.0 Attribute:</b> N/A</p> <p><b>Business Data Relationships:</b> N/A</p> <p><b>Application Link :</b> N/A</p>
<p><b>sdsFeatureDescription</b></p>	<p><b>Description:</b> A narrative describing the feature.</p> <p><b>Data Type:</b> String</p> <p><b>Length:</b> 8000</p> <p><b>Allow Nulls:</b> Yes</p> <p><b>Default Value:</b> N/A</p> <p><b>Assigned Domain:</b> N/A</p> <p><b>Data Structure Source:</b> SDSFIE 3.0</p> <p><b>Data Source:</b> N/A</p> <p><b>Schema Proponent:</b> Facilities Planning and Conservation Section (MCI Command GF-7)</p> <p><b>Justification:</b> Required as part of SDSFIE 3.0 Gold Schema.</p> <p><b>GEOFidelis Data Model 1.0 Attribute:</b> NARRATIVE</p> <p><b>Business Data Relationships:</b> N/A</p> <p><b>Application Link :</b> N/A</p>
<p><b>sdsMetadataID</b></p>	<p><b>Description:</b> The foreign key to a metadata record.</p> <p><i>Note: Contractor may leave this field blank. It will be filled by government GIS staff.</i></p> <p><b>Data Type:</b> String</p> <p><b>Length:</b> 80</p> <p><b>Allow Nulls:</b> No</p> <p><b>Default Value:</b> N/A</p> <p><b>Assigned Domain:</b> N/A</p> <p><b>Data Structure Source:</b> SDSFIE 3.0</p> <p><b>Data Source:</b> N/A</p> <p><b>Schema Proponent:</b> Facilities Planning and Conservation Section (MCI Command GF-7)</p> <p><b>Justification:</b> Required as part of SDSFIE 3.0 Gold Schema.</p> <p><b>GEOFidelis Data Model 1.0 Attribute:</b> META_ID</p>

	<p><b>Business Data Relationships:</b> N/A</p> <p><b>Application Link :</b> N/A</p>
<b>activityStatus</b>	<p><b>Description:</b> The category of activity status for the species.</p> <p><b>Data Type:</b> String</p> <p><b>Length:</b> 11</p> <p><b>Allow Nulls:</b> Yes</p> <p><b>Default Value:</b> N/A</p> <p><b>Assigned Domain:</b> <b>ActivityStatusType</b></p> <p><b>Data Structure Source:</b> SDSFIE 3.0</p> <p><b>Data Source:</b> N/A</p> <p><b>Schema Proponent:</b> Facilities Planning and Conservation Section (MCI Command GF-7)</p> <p><b>Justification:</b> Required as part of SDSFIE 3.0 Gold Schema.</p> <p><b>GEOFidelis Data Model 1.0 Attribute:</b> N/A</p> <p><b>Business Data Relationships:</b> N/A</p> <p><b>Application Link :</b> N/A</p>
<b>commonName</b>	<p><b>Description:</b> The common name of the species.</p> <p><b>Data Type:</b> String</p> <p><b>Length:</b> 80</p> <p><b>Allow Nulls:</b> No</p> <p><b>Default Value:</b> N/A</p> <p><b>Assigned Domain:</b> N/A</p> <p><b>Data Structure Source:</b> SDSFIE 3.0</p> <p><b>Data Source:</b> N/A</p> <p><b>Schema Proponent:</b> Facilities Planning and Conservation Section (MCI Command GF-7)</p> <p><b>Justification:</b> Required as part of SDSFIE 3.0 Gold Schema.</p> <p><b>GEOFidelis Data Model 1.0 Attribute:</b> N/A</p> <p><b>Business Data Relationships:</b> N/A</p> <p><b>Application Link :</b> N/A</p>
<b>federalListed</b>	<p><b>Description:</b> The species special status is based on a notice published in the Federal Register per the US Endangered Species Act.</p> <p><b>Data Type:</b> String</p>

	<p><b>Length:</b> 3</p> <p><b>Allow Nulls:</b> No</p> <p><b>Default Value:</b> N/A</p> <p><b>Assigned Domain:</b> <b>Boolean</b></p> <p><b>Data Structure Source:</b> SDSFIE 3.0</p> <p><b>Data Source:</b> N/A</p> <p><b>Schema Proponent:</b> Facilities Planning and Conservation Section (MCI Command GF-7)</p> <p><b>Justification:</b> Required as part of SDSFIE 3.0 Gold Schema.</p> <p><b>GEOFidelis Data Model 1.0 Attribute:</b> N/A</p> <p><b>Business Data Relationships:</b> N/A</p> <p><b>Application Link :</b> N/A</p>
<p><b>isNative</b></p>	<p><b>Description:</b> The species is a native species. If false, the assumption is that the species is exotic.</p> <p><b>Data Type:</b> String</p> <p><b>Length:</b> 3</p> <p><b>Allow Nulls:</b> Yes</p> <p><b>Default Value:</b> N/A</p> <p><b>Assigned Domain:</b> <b>Boolean</b></p> <p><b>Data Structure Source:</b> SDSFIE 3.0</p> <p><b>Data Source:</b> N/A</p> <p><b>Schema Proponent:</b> Facilities Planning and Conservation Section (MCI Command GF-7)</p> <p><b>Justification:</b> Required as part of SDSFIE 3.0 Gold Schema.</p> <p><b>GEOFidelis Data Model 1.0 Attribute:</b> N/A</p> <p><b>Business Data Relationships:</b> N/A</p> <p><b>Application Link :</b> N/A</p>
<p><b>iucnRedListed</b></p>	<p><b>Description:</b> The species is listed on the International Union for Conservation of Nature (IUCN) Red List.</p> <p><b>Data Type:</b> String</p> <p><b>Length:</b> 3</p> <p><b>Allow Nulls:</b> No</p> <p><b>Default Value:</b> N/A</p>

	<p><b>Assigned Domain:</b> <b>Boolean</b></p> <p><b>Data Structure Source:</b> SDSFIE 3.0</p> <p><b>Data Source:</b> N/A</p> <p><b>Schema Proponent:</b> Facilities Planning and Conservation Section (MCI Command GF-7)</p> <p><b>Justification:</b> Required as part of SDSFIE 3.0 Gold Schema.</p> <p><b>GEOFidelis Data Model 1.0 Attribute:</b> N/A</p> <p><b>Business Data Relationships:</b> N/A</p> <p><b>Application Link :</b> N/A</p>
<p><b>kingdom</b></p>	<p><b>Description:</b> A descriptor identifying one of the five taxonomic kingdoms into which scientists place all living organisms.</p> <p><b>Data Type:</b> String</p> <p><b>Length:</b> 8</p> <p><b>Allow Nulls:</b> No</p> <p><b>Default Value:</b> N/A</p> <p><b>Assigned Domain:</b> <b>KingdomType</b></p> <p><b>Data Structure Source:</b> SDSFIE 3.0</p> <p><b>Data Source:</b> N/A</p> <p><b>Schema Proponent:</b> Facilities Planning and Conservation Section (MCI Command GF-7)</p> <p><b>Justification:</b> Required as part of SDSFIE 3.0 Gold Schema.</p> <p><b>GEOFidelis Data Model 1.0 Attribute:</b> N/A</p> <p><b>Business Data Relationships:</b> N/A</p> <p><b>Application Link :</b> N/A</p>
<p><b>natureServeID</b></p>	<p><b>Description:</b> The unique identifier for the NatureServe record of the species (<a href="http://www.natureserve.org">http://www.natureserve.org</a>).</p> <p><b>Data Type:</b> String</p> <p><b>Length:</b> 10</p> <p><b>Allow Nulls:</b> No</p> <p><b>Default Value:</b> N/A</p> <p><b>Assigned Domain:</b> N/A</p> <p><b>Data Structure Source:</b> SDSFIE 3.0</p> <p><b>Data Source:</b> N/A</p> <p><b>Schema Proponent:</b> Facilities Planning and Conservation Section (MCI</p>

	<p>Command GF-7)</p> <p><b>Justification:</b> Required as part of SDSFIE 3.0 Gold Schema.</p> <p><b>GEOFidelis Data Model 1.0 Attribute:</b> N/A</p> <p><b>Business Data Relationships:</b> N/A</p> <p><b>Application Link :</b> N/A</p>
<p><b>otherStatusType</b></p>	<p><b>Description:</b> The category of the other special status for the species.</p> <p><b>Data Type:</b> String</p> <p><b>Length:</b> 24</p> <p><b>Allow Nulls:</b> No</p> <p><b>Default Value:</b> N/A</p> <p><b>Assigned Domain:</b> OtherSpecialStatusType</p> <p><b>Data Structure Source:</b> SDSFIE 3.0</p> <p><b>Data Source:</b> N/A</p> <p><b>Schema Proponent:</b> Facilities Planning and Conservation Section (MCI Command GF-7)</p> <p><b>Justification:</b> Required as part of SDSFIE 3.0 Gold Schema.</p> <p><b>GEOFidelis Data Model 1.0 Attribute:</b> N/A</p> <p><b>Business Data Relationships:</b> N/A</p> <p><b>Application Link :</b> N/A</p>
<p><b>otherStatusValue</b></p>	<p><b>Description:</b> A string value that is constructed per species as defined by appropriate otherStatusType. See <a href="http://www.natureserve.org/explorer/statusus.htm">http://www.natureserve.org/explorer/statusus.htm</a> for more details.</p> <p><b>Data Type:</b> String</p> <p><b>Length:</b> 30</p> <p><b>Allow Nulls:</b> No</p> <p><b>Default Value:</b> N/A</p> <p><b>Assigned Domain:</b> N/A</p> <p><b>Data Structure Source:</b> SDSFIE 3.0</p> <p><b>Data Source:</b> N/A</p> <p><b>Schema Proponent:</b> Facilities Planning and Conservation Section (MCI Command GF-7)</p> <p><b>Justification:</b> Required as part of SDSFIE 3.0 Gold Schema.</p> <p><b>GEOFidelis Data Model 1.0 Attribute:</b> N/A</p> <p><b>Business Data Relationships:</b> N/A</p>

	<p><b>Application Link :</b> N/A</p>
<b>scientificName</b>	<p><b>Description:</b> The scientific name of the species.</p> <p><b>Data Type:</b> String</p> <p><b>Length:</b> 255</p> <p><b>Allow Nulls:</b> No</p> <p><b>Default Value:</b> N/A</p> <p><b>Assigned Domain:</b> N/A</p> <p><b>Data Structure Source:</b> SDSFIE 3.0</p> <p><b>Data Source:</b> N/A</p> <p><b>Schema Proponent:</b> Facilities Planning and Conservation Section (MCI Command GF-7)</p> <p><b>Justification:</b> Required as part of SDSFIE 3.0 Gold Schema.</p> <p><b>GEOFidelis Data Model 1.0 Attribute:</b> N/A</p> <p><b>Business Data Relationships:</b> N/A</p> <p><b>Application Link :</b> N/A</p>
<b>specialStatusCategory</b>	<p><b>Description:</b> The category of the special status of the species.</p> <p><b>Data Type:</b> String</p> <p><b>Length:</b> 40</p> <p><b>Allow Nulls:</b> No</p> <p><b>Default Value:</b> N/A</p> <p><b>Assigned Domain:</b> <b>SpecialStatusCategoryType</b></p> <p><b>Data Structure Source:</b> SDSFIE 3.0</p> <p><b>Data Source:</b> N/A</p> <p><b>Schema Proponent:</b> Facilities Planning and Conservation Section (MCI Command GF-7)</p> <p><b>Justification:</b> Required as part of SDSFIE 3.0 Gold Schema.</p> <p><b>GEOFidelis Data Model 1.0 Attribute:</b> N/A</p> <p><b>Business Data Relationships:</b> N/A</p> <p><b>Application Link :</b> N/A</p>
<b>stateListed</b>	<p><b>Description:</b> The species special status is based on a notice published by a state.</p> <p><b>Data Type:</b> String</p> <p><b>Length:</b> 3</p>

	<p><b>Allow Nulls:</b> Yes</p> <p><b>Default Value:</b> N/A</p> <p><b>Assigned Domain:</b> <b>Boolean</b></p> <p><b>Data Structure Source:</b> SDSFIE 3.0</p> <p><b>Data Source:</b> N/A</p> <p><b>Schema Proponent:</b> Facilities Planning and Conservation Section (MCI Command GF-7)</p> <p><b>Justification:</b> Required as part of SDSFIE 3.0 Gold Schema.</p> <p><b>GEOFidelis Data Model 1.0 Attribute:</b> N/A</p> <p><b>Business Data Relationships:</b> N/A</p> <p><b>Application Link :</b> N/A</p>
<p><b>installationCode</b></p>	<p><b>Description:</b> The code assigned by the Military Service (includes Washington Headquarters Services) or Agency used to identify the site or group of sites that make up an installation. This represents the official identifying code for a Services installation</p> <p><i>Note: Contractor may leave this field blank. It will be filled by government GIS staff.</i></p> <p><b>Data Type:</b> String</p> <p><b>Length:</b> 20</p> <p><b>Allow Nulls:</b> No</p> <p><b>Default Value:</b> N/A</p> <p><b>Assigned Domain:</b> N/A</p> <p><b>Data Structure Source:</b> MCIWEST-MCB CAMPEN G-F</p> <p><b>Data Source:</b> Defense Logistics Agency DoDAAC</p> <p><b>Schema Proponent:</b> MCIWEST-MCB CAMPEN Environmental Security</p> <p><b>Justification:</b> Field identifies the USMC Installation that the feature belongs to. Field is required for data aggregation purposes and is required for the application that aggregates into the publication databases. Application dependency</p> <p><b>GEOFidelis Data Model 1.0 Attribute:</b> N/A</p> <p><b>Business Data Relationships:</b> Multiple data aggregation applications.</p> <p><b>Application Link :</b> Multiple data aggregation applications</p>
<p><b>breedingStatus</b></p>	<p><b>Description:</b> Breeding status use area determined at the end of the survey period (cumulative determination). <b>Allowed values are "PAIR", "TERRITORIAL MALE", "TRANSIENT MALE", "FAMILY GROUP", "SINGLE FEMALE", "FLEDGLING".</b></p> <p><b>Data Type:</b> String</p>

	<p><b>Length:</b> 20</p> <p><b>Allow Nulls:</b> <del>Yes</del> <b>No</b> (EMD requirement)</p> <p><b>Default Value:</b> N/A</p> <p><b>Assigned Domain:</b> N/A</p> <p><b>Data Structure Source:</b> MCAS Miramar Environmental Management Department</p> <p><b>Data Source:</b> MCAS Miramar Environmental Management Department NRD</p> <p><b>Schema Proponent:</b> MCAS Miramar Environmental Management Department</p> <p><b>Justification:</b> Needed for species management purposes. For population monitoring and estimation. Also for impact analysis.</p> <p><b>GEOFidelis Data Model 1.0 Attribute:</b> N/A</p> <p><b>Business Data Relationships:</b> N/A</p> <p><b>Application Link :</b> N/A</p>
<p><b>numberOfIndividuals</b></p>	<p><b>Description:</b> Number of individuals at location</p> <p><b>Data Type:</b> Integer</p> <p><b>Length:</b> 5</p> <p><b>Allow Nulls:</b> Yes</p> <p><b>Default Value:</b> N/A</p> <p><b>Assigned Domain:</b> N/A</p> <p><b>Data Structure Source:</b> MCAS Miramar Environmental Management Department</p> <p><b>Data Source:</b> MCAS Miramar Environmental Management Department</p> <p><b>Schema Proponent:</b> MCAS Miramar Environmental Management Department</p> <p><b>Justification:</b> Required for resource management – Needed for population estimation. (This field is required in order to maintain information collected on previous/historical surveys – may not be required for new surveys)</p> <p><b>GEOFidelis Data Model 1.0 Attribute:</b> N/A</p> <p><b>Business Data Relationships:</b> N/A</p> <p><b>Application Link :</b> N/A</p>
<p><b>recordDate</b></p>	<p><b>Description:</b> The date of the last field survey visit. For areas resulting from modeling or estimation from multiple sightings, use a date of known occupancy.</p> <p><b>Data Type:</b> Date</p> <p><b>Length:</b> 8</p> <p><b>Allow Nulls:</b> <del>Yes</del> <b>No</b> (EMD requirement)</p>



	<p><b>Default Value:</b> N/A</p> <p><b>Assigned Domain:</b> N/A</p> <p><b>Data Structure Source:</b> SDSFIE 3.0</p> <p><b>Data Source:</b> N/A</p> <p><b>Schema Proponent:</b> Facilities Planning and Conservation Section (MCI Command GF-7)</p> <p><b>Justification:</b> Required for management purposes. To be able to separate observations from various years. To be able to track population estimations over various years for a particular geographic area.</p> <p><b>GEOFidelis Data Model 1.0 Attribute:</b> N/A</p> <p><b>Business Data Relationships:</b> N/A</p> <p><b>Application Link :</b> N/A</p>
<p><b>reportCitation</b></p>	<p><b>Description:</b> Complete citation of survey report</p> <p><b>Data Type:</b> String</p> <p><b>Length:</b> 240</p> <p><b>Allow Nulls:</b> Yes</p> <p><b>Default Value:</b> N/A</p> <p><b>Assigned Domain:</b> N/A</p> <p><b>Data Structure Source:</b> MCAS Miramar Environmental Management Department</p> <p><b>Data Source:</b> MCAS Miramar Environmental Management Department</p> <p><b>Schema Proponent:</b> MCAS Miramar Environmental Management Department</p> <p><b>Justification:</b> This information gives the SMEs and other users a reference to the complete report for access to additional information that may be required for USMC data calls or regulatory agency information requests that is not in the GIS database. Especially for work done by contractors.</p> <p><b>GEOFidelis Data Model 1.0 Attribute:</b> N/A</p> <p><b>Business Data Relationships:</b> N/A</p> <p><b>Application Link :</b> N/A</p>
<p><b>surveyAffiliate</b></p>	<p><b>Description:</b> Company or affiliation of surveyor/investigator</p> <p><b>Data Type:</b> String</p> <p><b>Length:</b> 50</p> <p><b>Allow Nulls:</b> Yes</p> <p><b>Default Value:</b> N/A</p> <p><b>Assigned Domain:</b> N/A</p>

	<p><b>Data Structure Source:</b> MCAS Miramar Environmental Management Department</p> <p><b>Data Source:</b> MCAS Miramar Environmental Management Department</p> <p><b>Schema Proponent:</b> MCAS Miramar Environmental Management Department</p> <p><b>Justification:</b> Required for management purposes. To identify the contractor or other entity doing the work for the Station. For multiple contract data, they may be used to sort data.</p> <p><b>GEOFidelis Data Model 1.0 Attribute:</b> N/A</p> <p><b>Business Data Relationships:</b> N/A</p> <p><b>Application Link :</b> N/A</p>
<p><b>surveyor</b></p>	<p><b>Description:</b> Name of surveyor(s). Use last name first. Separate names with semicolons</p> <p><b>Data Type:</b> String</p> <p><b>Length:</b> 50</p> <p><b>Allow Nulls:</b> Yes</p> <p><b>Default Value:</b> N/A</p> <p><b>Assigned Domain:</b> N/A</p> <p><b>Data Structure Source:</b> MCAS Miramar Environmental Management Department</p> <p><b>Data Source:</b> MCAS Miramar Environmental Management Department</p> <p><b>Schema Proponent:</b> MCAS Miramar Environmental Management Department</p> <p><b>Justification:</b> Required for management purposes. Required to identify the actual person doing the survey in the field. Used to verify that the person doing the field work was qualified for that work and to support the survey results if the information is questioned by regulators.</p> <p><b>GEOFidelis Data Model 1.0 Attribute:</b> N/A</p> <p><b>Business Data Relationships:</b> N/A</p> <p><b>Application Link :</b> N/A</p>
<p><b>surveyYear</b></p>	<p><b>Description:</b> The year of the survey (YYYY)</p> <p><b>Data Type:</b> Integer</p> <p><b>Length:</b> 4</p> <p><b>Allow Nulls:</b> Yes <b>No</b> (EMD requirement)</p> <p><b>Default Value:</b> N/A</p> <p><b>Assigned Domain:</b> N/A</p> <p><b>Data Structure Source:</b> MCAS Miramar Environmental Management Department</p>

	<p><b>Data Source:</b> MCAS Miramar Environmental Management Department EMD</p> <p><b>Schema Proponent:</b> MCAS Miramar Environmental Management Department</p> <p><b>Justification:</b> Needed because some points are estimated central points created from several field survey points mapped on different days. Can't fill in 'recordDate' for that info because a data field needs month/day info.</p> <p><b>GEOFidelis Data Model 1.0 Attribute:</b> N/A</p> <p><b>Business Data Relationships:</b> N/A</p> <p><b>Application Link :</b> N/A</p>
<p><b>userFlag</b></p>	<p><b>Description:</b> An operator defined work area to facilitate map symbolization and for simplifying queries results</p> <p><b>Data Type:</b> String</p> <p><b>Length:</b> 20</p> <p><b>Allow Nulls:</b> Yes</p> <p><b>Default Value:</b> N/A</p> <p><b>Assigned Domain:</b> N/A</p> <p><b>Data Structure Source:</b> MCAS Miramar Environmental Management Department</p> <p><b>Data Source:</b> MCAS Miramar Environmental Management Department NRD</p> <p><b>Schema Proponent:</b> MCAS Miramar Environmental Management Department</p> <p><b>Justification:</b> Required for map symbolization and for simplifying queries</p> <p><b>GEOFidelis Data Model 1.0 Attribute:</b> N/A</p> <p><b>Business Data Relationships:</b> N/A</p> <p><b>Application Link :</b> N/A</p>

**Sub-Class:** This feature has been sub-classed using the attribute scientificName.

**Topological Requirements:** This feature type is for California Gnatcatcher Use Areas only. The attribute 'scientificName' shall have the value 'Polioptila californica' for all features.

**Business Data Relationships:** None

**Applications:** None

**DoD Facility Analysis Category (FAC) Codes:** None

**GEOFidelis Data Model 1.0 Entity Type:**

SpecStatSpecArea\_LBV

**Alias:** LeastBellsVireoUseArea

**Definition:** Indicates existence of a special status species by the geographically described geometry either currently, historically, or the species is being recruited into the range.

**Object Type:** Polygon

**Data Structure Source:** SDSFIE 3.0 Gold specialStatusSpeciesArea; GEOFidelis Data Model 3.0; MCIWEST-MCB CAMPEN G-F; MCAS Miramar Environmental Management Department

**Schema Proponent:** MCAS Miramar Environmental Management Department

**Justification:** Required to store flora and fauna special species areas at MCIWEST-MCB CAMPEN G-F Installations; MCAS Miramar Integrated Natural Resources Management Plan, Endangered Species Act

**Attributes:**

<p><b>specialStatusSpeciesIDPK</b></p>	<p><b>Description:</b> The unique identifier for each SpecialStatusSpecies feature.</p> <p><b>Data Type:</b> String</p> <p><b>Length:</b> 20</p> <p><b>Allow Nulls:</b> No</p> <p><b>Default Value:</b> N/A</p> <p><b>Assigned Domain:</b> N/A</p> <p><b>Data Structure Source:</b> SDSFIE 3.0</p> <p><b>Data Source:</b> N/A</p> <p><b>Schema Proponent:</b> Facilities Planning and Conservation Section (MCI Command GF-7)</p> <p><b>Justification:</b> Required as part of SDSFIE 3.0 Gold Schema.</p> <p><b>GEOFidelis Data Model 1.0 Attribute:</b> N/A</p> <p><b>Business Data Relationships:</b> N/A</p> <p><b>Application Link :</b> N/A</p>
<p><b>sdsID</b></p>	<p><b>Description:</b> A unique identifier for all features and objects in the SDSFIE.</p> <p><i>Note: Contractor may leave this field blank. It will be filled by government GIS staff.</i></p> <p><b>Data Type:</b> GUID</p> <p><b>Length:</b> N/A</p> <p><b>Allow Nulls:</b> No</p> <p><b>Default Value:</b> N/A</p> <p><b>Assigned Domain:</b> N/A</p> <p><b>Data Structure Source:</b> SDSFIE 3.0</p>

**ATTACHMENT 6**

**NON SELF-INSURED REQUIREMENTS FORM**

**INSURANCE MUST CONFORM TO ALL THE REQUIREMENTS LISTED BELOW PRIOR TO RECIPIENT BEING PERMITTED TO USE OR OCCUPY US GOVERNMENT PREMISES OR PROPERTY PURSUANT TO THE COOPERATIVE AGREEMENT**

**1. PUBLIC LIABILITY AND PROPERTY DAMAGE**

a. Required minimum amounts of insurance listed below:

\$	N/A	Fire and Extended Coverage
\$	1,000,000	Third Party Property Damage
\$	1,000,000	Third Party Personal Injury Per Person
\$	1,000,000	Third Party Personal Injury Per Accident

**2. THE CERTIFICATE OF INSURANCE MUST CONTAIN THE FOLLOWING ENDORSEMENTS:**

a. "The insurer waives any right of subrogation against the United States of America which might arise by reason of any payment made under this policy."

b. "The Commanding Officer, Naval Facilities Engineering Command, Facilities Engineering Command, shall be given thirty (30) days written notice prior to making any material change in or the cancellation of the policy."

c. "The United States of America (Dept. of the Navy) is added as an additional insured in operations of the policyholder at or from the premises **licensed/leased** from the United States."

d. "This insurance certificate is for use of facilities at Marine Corps Air Station (MCAS) Miramar under this Cooperative Agreement, No. N62473-15-2-0021.

e. Loss, if any, under this policy shall be adjusted with Recipient and the proceeds, at the direction of the US Government, shall be payable to Recipient, and proceeds not paid to Recipient shall be payable to the Treasurer of the United States of America."

**3. NOTICE: "RIGHT TO USE" DOCUMENTS WILL NOT BE FULLY EXECUTED UNTIL CERTIFICATE IS RECEIVED WITH PROPER ENDORSEMENTS.**

## ATTACHMENT 7

### SELF-INSURANCE REQUIREMENTS FORM

**INSURANCE MUST CONFORM TO ALL THE REQUIREMENTS LISTED BELOW PRIOR TO RECIPIENT BEING PERMITTED TO USE OR OCCUPY GOVERNMENT PREMISES OR PROPERTY PURSUANT TO THE COOPERATIVE AGREEMENT**

#### 1. PUBLIC LIABILITY AND PROPERTY DAMAGE

a. Required minimum amounts of insurance listed below:

\$	N/A	Fire and Extended Coverage
\$	1,000,000	Third Party Property Damage
\$	1,000,000	Third Party Personal Injury Per Person
\$	1,000,000	Third Party Personal Injury Per Accident

**2. SELF-INSURANCE REQUIREMENTS:** If your organization is self-insured, please provide evidence of self-insurance which meets or exceeds the insurance liability amounts in Item # 1.

The following information, written on your organization's letterhead, is also required:

- A brief description of your organization's self-insurance program, with reference to statutory or regulatory authority establishing the self insurance program.
- The name and telephone number of your organization's self-insurance program administrator.
- Reference the appropriate military facility and cooperative agreement number.

#### 3. IF YOUR SELF-INSURANCE PROGRAM DOES NOT MEET THE ABOVE MINIMUM REQUIREMENTS:

- Provide evidence of Excess Liability Insurance in the amount necessary to meet or exceed the minimum requirements in Item #1 above.
- The following endorsements are required for Excess Liability insurance policies:
  - a. "The insurer waives any right of subrogation against the United States of America which might arise by reason of any payment made under this policy."
  - b. "The Commanding Officer, Naval Facilities Engineering Command San Diego, CA shall be given thirty (30) days written notice prior to making any material change in or the cancellation of the self insurance program."
  - c. "The United States of America (Department of the Navy) is added as an additional insured in operations of the policyholder at or from the premises licensed/leased from the United States".
  - d. "This insurance certificate is for use of facilities at Marine Corps Air Station (MCAS) Miramar under this Cooperative Agreement, No. N62473-15-2-0021

**4. NOTICE: "RIGHT TO USE" DOCUMENTS WILL NOT BE FULLY EXECUTED UNTIL CERTIFICATE IS RECEIVED WITH PROPER ENDORSEMENTS.**

## ATTACHMENT 8

### 252.232-7006 WIDE AREA WORKFLOW PAYMENT INSTRUCTIONS (JUN 2012)

(a) Definitions. As used in this clause--

Department of Defense Activity Address Code (DoDAAC) is a six position code that uniquely identifies a unit, activity, or organization.

Document type means the type of payment request or receiving report available for creation in Wide Area WorkFlow (WAWF).

Local processing office (LPO) is the office responsible for payment certification when payment certification is done external to the entitlement system.

(b) Electronic invoicing. The WAWF system is the method to electronically process vendor payment requests and receiving reports, as authorized by DFARS 252.232-7003, Electronic Submission of Payment Requests and Receiving Reports.

(c) WAWF access. To access WAWF, the Contractor shall--

(1) Have a designated electronic business point of contact in the Central Contractor Registration at <https://www.acquisition.gov>; and

(2) Be registered to use WAWF at <https://wawf.eb.mil/> following the step-by-step procedures for self-registration available at this Web site.

(d) WAWF training. The Contractor should follow the training instructions of the WAWF Web-Based Training Course and use the Practice Training Site before submitting payment requests through WAWF. Both can be accessed by selecting the "Web Based Training" link on the WAWF home page at <https://wawf.eb.mil/>.

(e) WAWF methods of document submission. Document submissions may be via Web entry, Electronic Data Interchange, or File Transfer Protocol.

(f) WAWF payment instructions. The Contractor must use the following information when submitting payment requests and receiving reports in WAWF for this contract/order: **N62473-15-2-0021**.

(1) Document type. The Contractor shall use the following document type(s).

### NAVY CONSTRUCTION/FACILITIES MANAGEMENT INVOICE

(2) Inspection/acceptance location. The Contractor shall select the following inspection/acceptance location(s) in WAWF, as specified by the contracting officer.

**Issue by and admin DoDAAC is N62473/RAQE0**

**Pay Official DoDAAC is N68732**

(3) Document routing. The Contractor shall use the information in the Routing Data Table below only to fill in applicable fields in WAWF when creating payment requests and receiving reports in the system.

Routing Data Table\*

Field Name in WAWF	Data to be entered in WAWF
Pay Official DoDAAC	<b>N68732</b>
Issue By DoDAAC	<b>N62473</b>
Admin DoDAAC	<b>N62473</b>
Inspect By DoDAAC	<b>N62473/RAQE0</b>
Ship To Code	<b>N/A</b>
Ship From Code	<b>N/A</b>
Mark For Code	<b>N/A</b>
Service Approver (DoDAAC)	<b>N/A</b>
Service Acceptor (DoDAAC)	<b>N62473/RAQE0</b>
Accept at Other DoDAAC	<b>N/A</b>
LPO DoDAAC	<b>N62473/RAQE0</b>
DCAA Auditor DoDAAC	<b>N/A</b>
Other DoDAAC(s)	<b>N/A</b>

(4) Payment request and supporting documentation. The Contractor shall ensure a payment request includes appropriate contract line item and subline item descriptions of the work performed or supplies delivered, unit price/cost per unit, fee (if applicable), and all relevant back-up documentation, as defined in DFARS Appendix F, (e.g. timesheets) in support of each payment request.

(5) WAWF email notifications. The Contractor shall enter the email address identified below in the “Send Additional Email Notifications” field of WAWF once a document is submitted in the system.

[NAVFAC\\_SW\\_RAQE0\\_inspector@navy.mil](mailto:NAVFAC_SW_RAQE0_inspector@navy.mil)

(g) WAWF point of contact. (1) The Contractor may obtain clarification regarding invoicing in WAWF from the following contracting activity's WAWF point of contact.

**NOT APPLICABLE**

(2) For technical WAWF help, contact the WAWF helpdesk at 866-618-5988.

(End of clause)