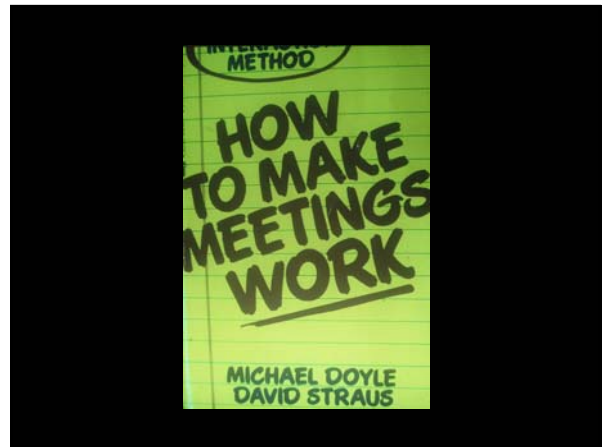


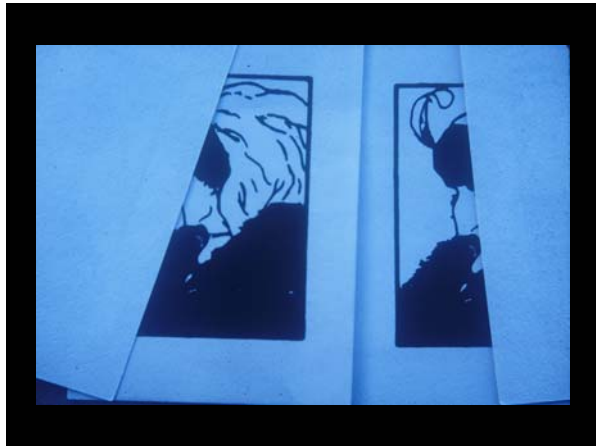
| Tillage | Residue | Soil Loss tons/acre |
|----------------|---------|------------------------|
| No-till | 6,000 | 2.6 |
| Strip-till | 6,000 | 7.1 |
| Chisel disk | 3,000 | 10 |
| Moldboard plow | — | 32 |



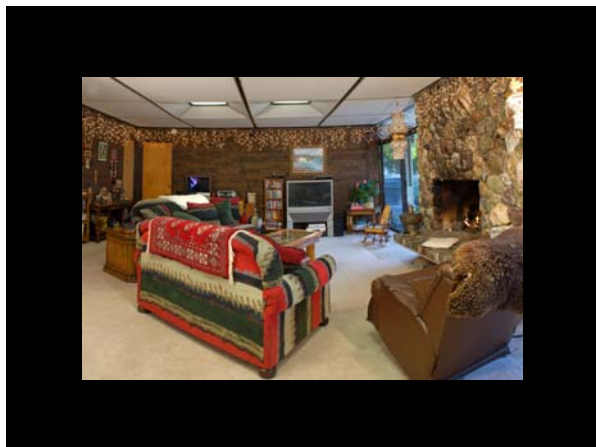
Central Coast Rangelands Coalition
Spring 2012 Membership Meeting



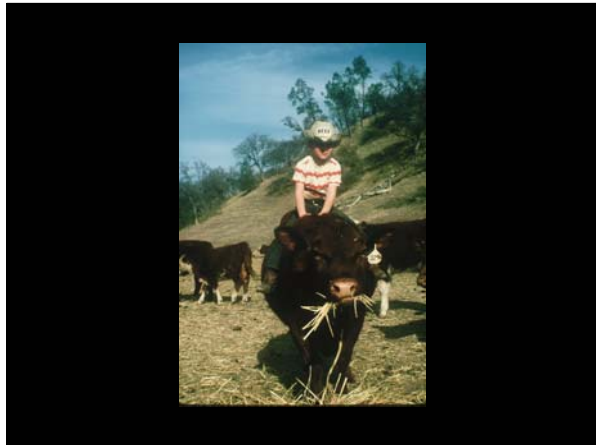
Central Coast Rangelands Coalition
Spring 2012 Membership Meeting



Central Coast Rangelands Coalition
Spring 2012 Membership Meeting



Central Coast Rangelands Coalition
Spring 2012 Membership Meeting



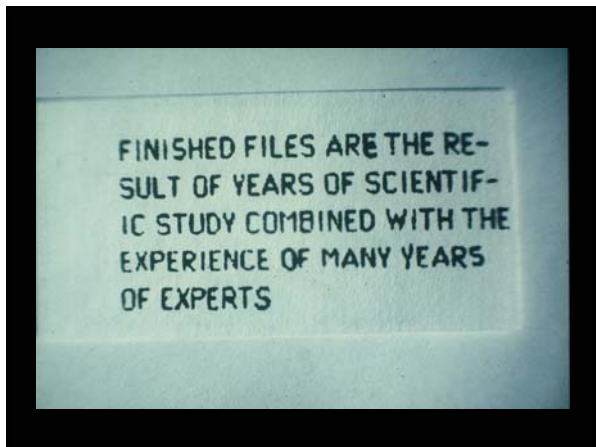
Central Coast Rangelands Coalition
Spring 2012 Membership Meeting



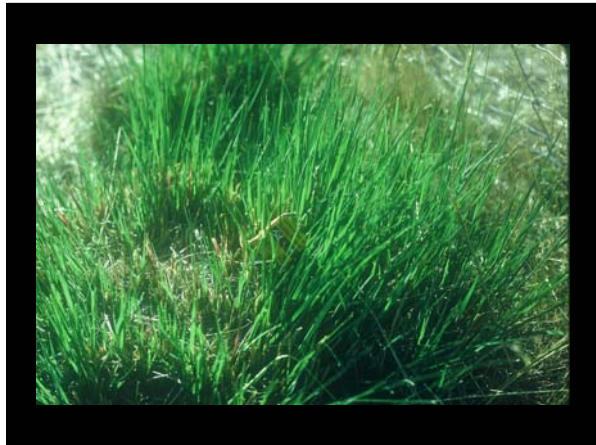
Central Coast Rangelands Coalition
Spring 2012 Membership Meeting



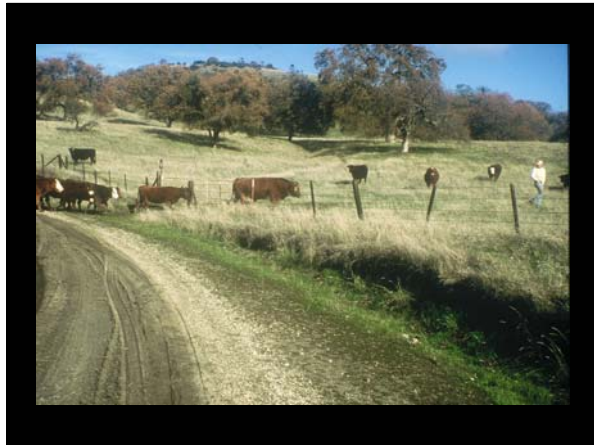
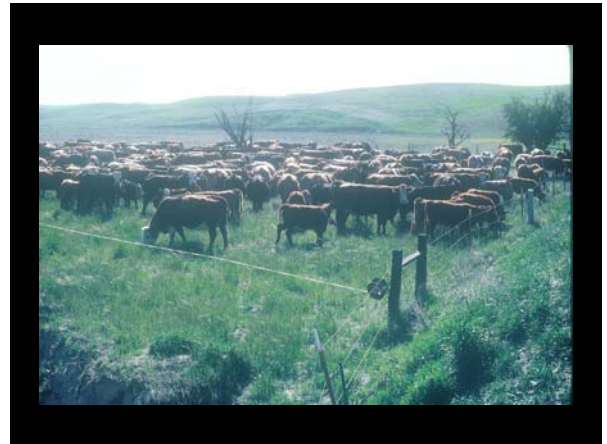
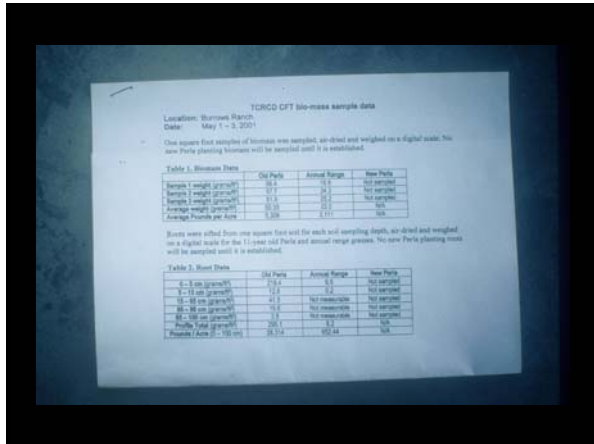
Central Coast Rangelands Coalition
Spring 2012 Membership Meeting



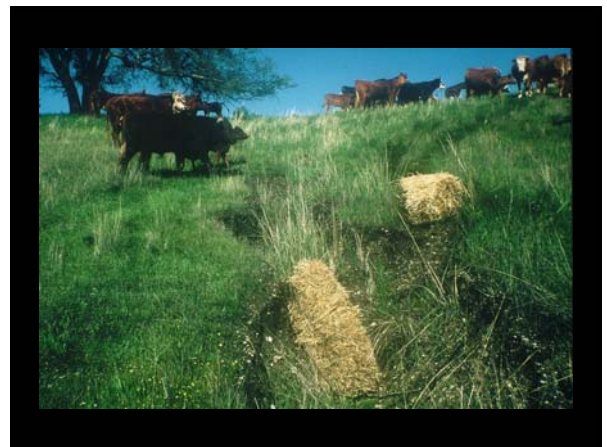
Central Coast Rangelands Coalition
Spring 2012 Membership Meeting



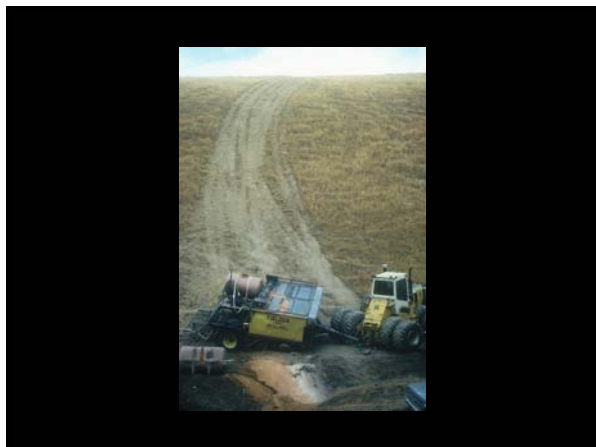
Central Coast Rangelands Coalition Spring 2012 Membership Meeting



Central Coast Rangelands Coalition
Spring 2012 Membership Meeting



Central Coast Rangelands Coalition
Spring 2012 Membership Meeting





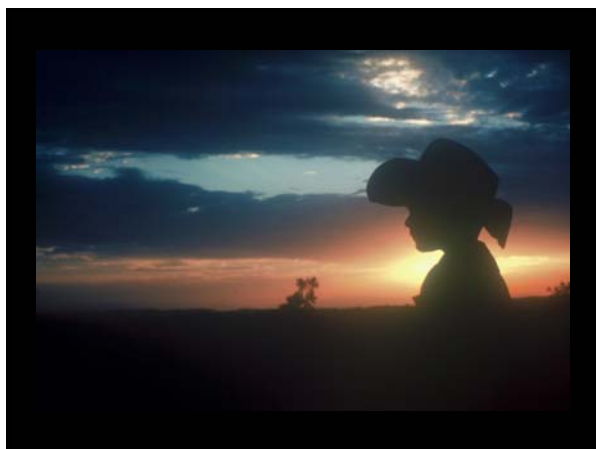
Ranching Sustainability Analysis

A voluntary program developed by California ranchers for use by the California ranching community

University of California - Agriculture and Natural Resources & Rancher Project Team

Supported by the California Wildlife Conservation Board

Project Team: George Work¹ (Chair), Amy Breschini², Cliff Garrison¹, Kevin Kester¹, Royce Larsen², Aaron Lazanoff¹, Chuck Pritchard¹, Steve Sinton¹, Karl Striby¹, Bill Tietje², Jack Varian¹, and Jim Zingo² - </rancher>UCCE, </NRCS>



Central Coast Rangelands Coalition
Spring 2012 Membership Meeting

