

# Beef



## 夏日美国 SUMMER

9月1日 - 9月14日



肉好きなあなたへ！  
压卷、15段盛り

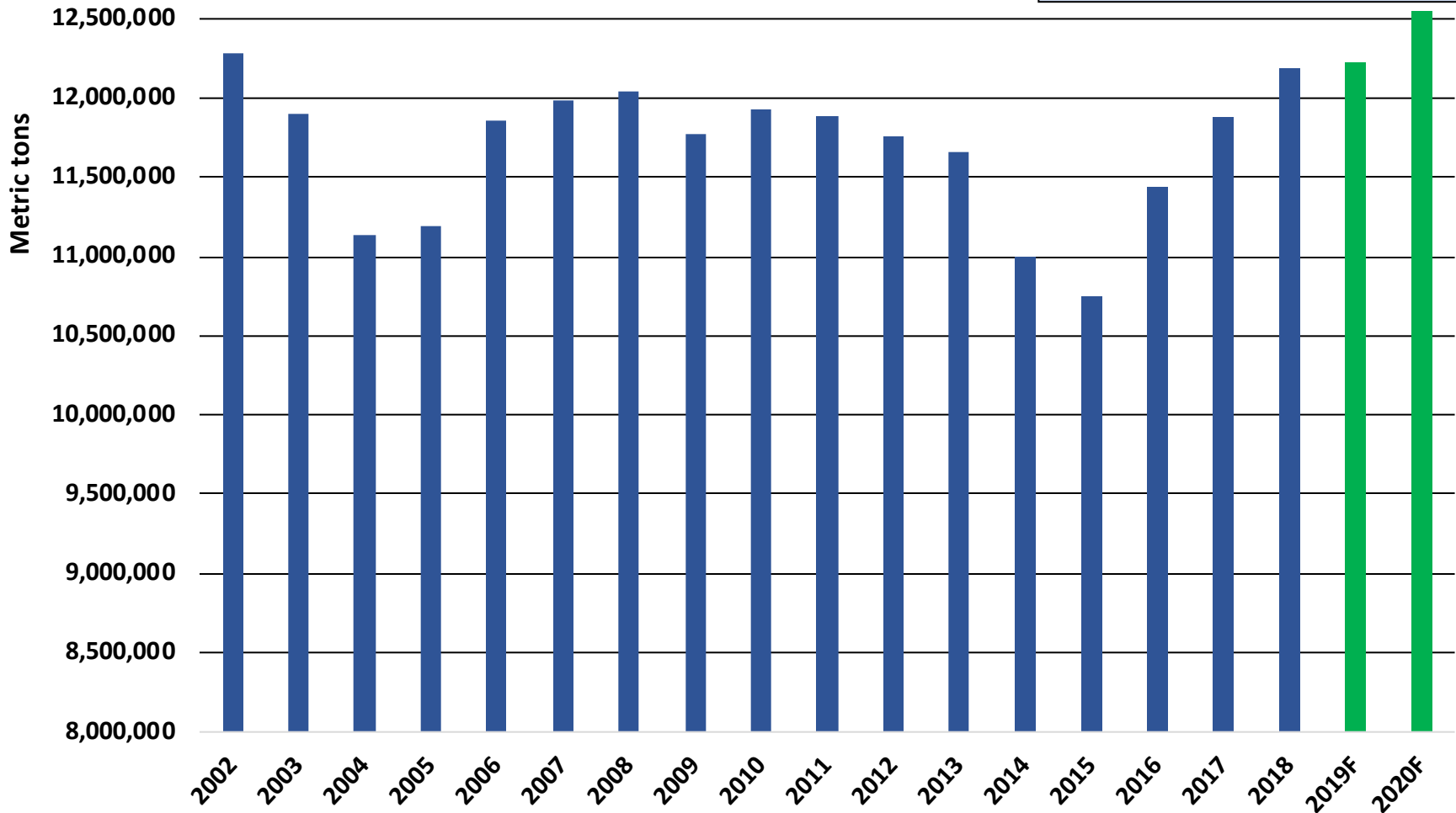
献给喜欢吃肉的你！压轴，15层拼盘  
GENNOYA special assortment 598元  
追加1人份前场全拼 258元



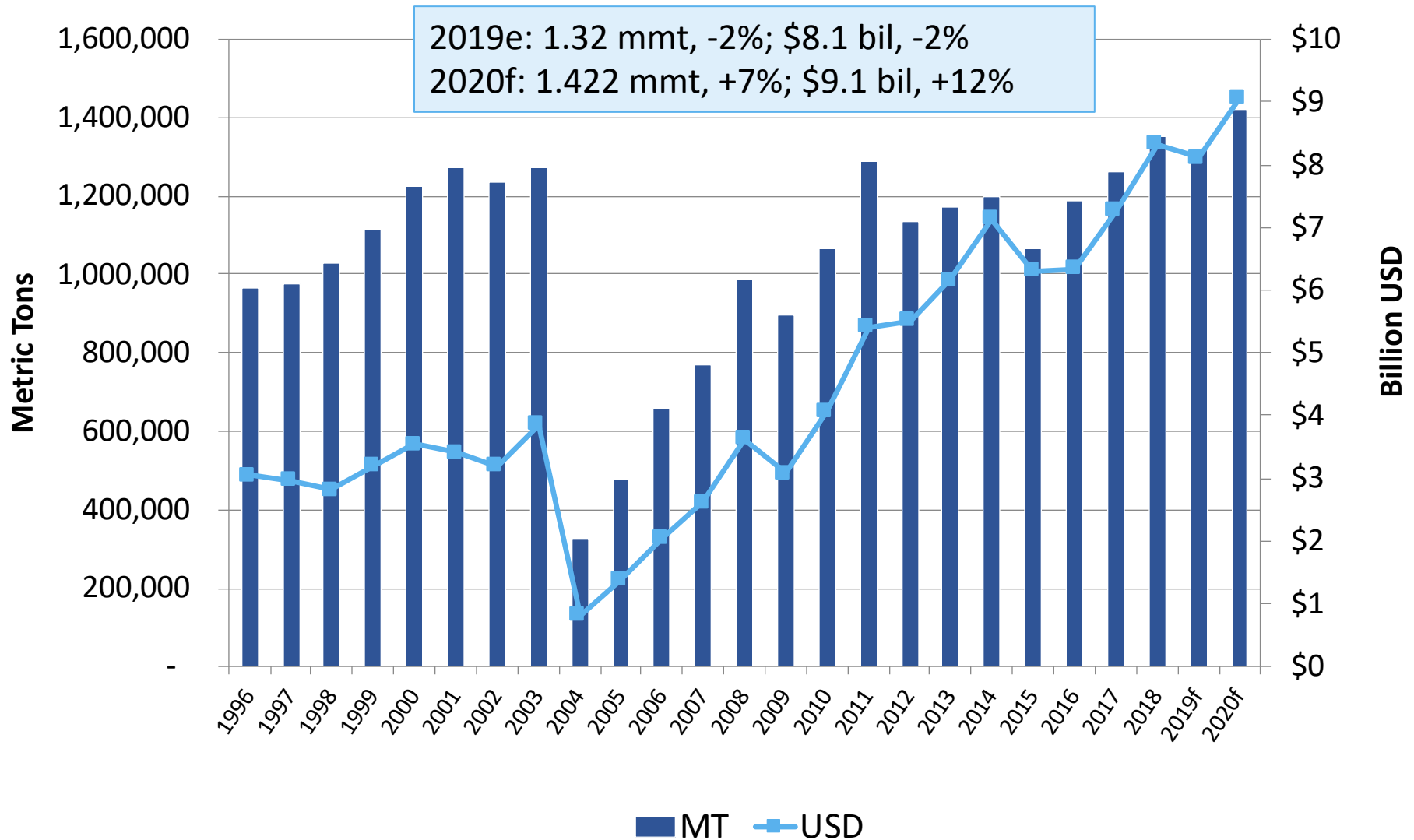
# 2020 U.S. beef production expected to be record large

2015: 10.75 MMT, -2.3%  
2016: 11.44 MMT, +6.4%  
2017: 11.88 MMT, +3.8%  
2018: 12.19 MMT, +2.6%  
2019F: 12.22 MMT, +0.3%  
2020F: 12.55 MMT, +2.7%

Annual U.S. Beef Production



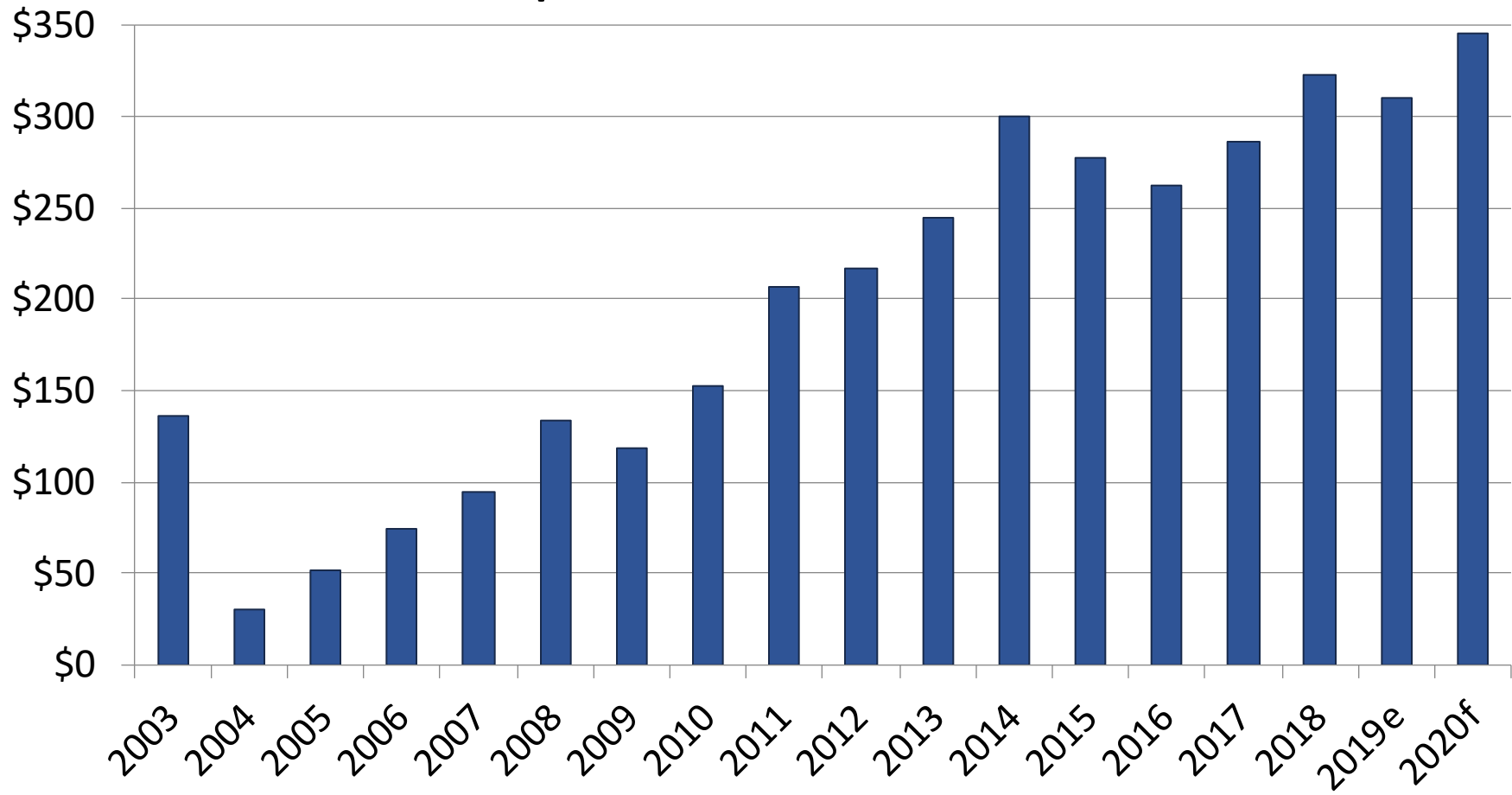
# U.S. beef and variety meat exports were record large in 2018 at \$8.3 Billion



# Value of exports per fed head of cattle slaughtered reached a record \$323 in 2018



## Export Value Per Fed Head

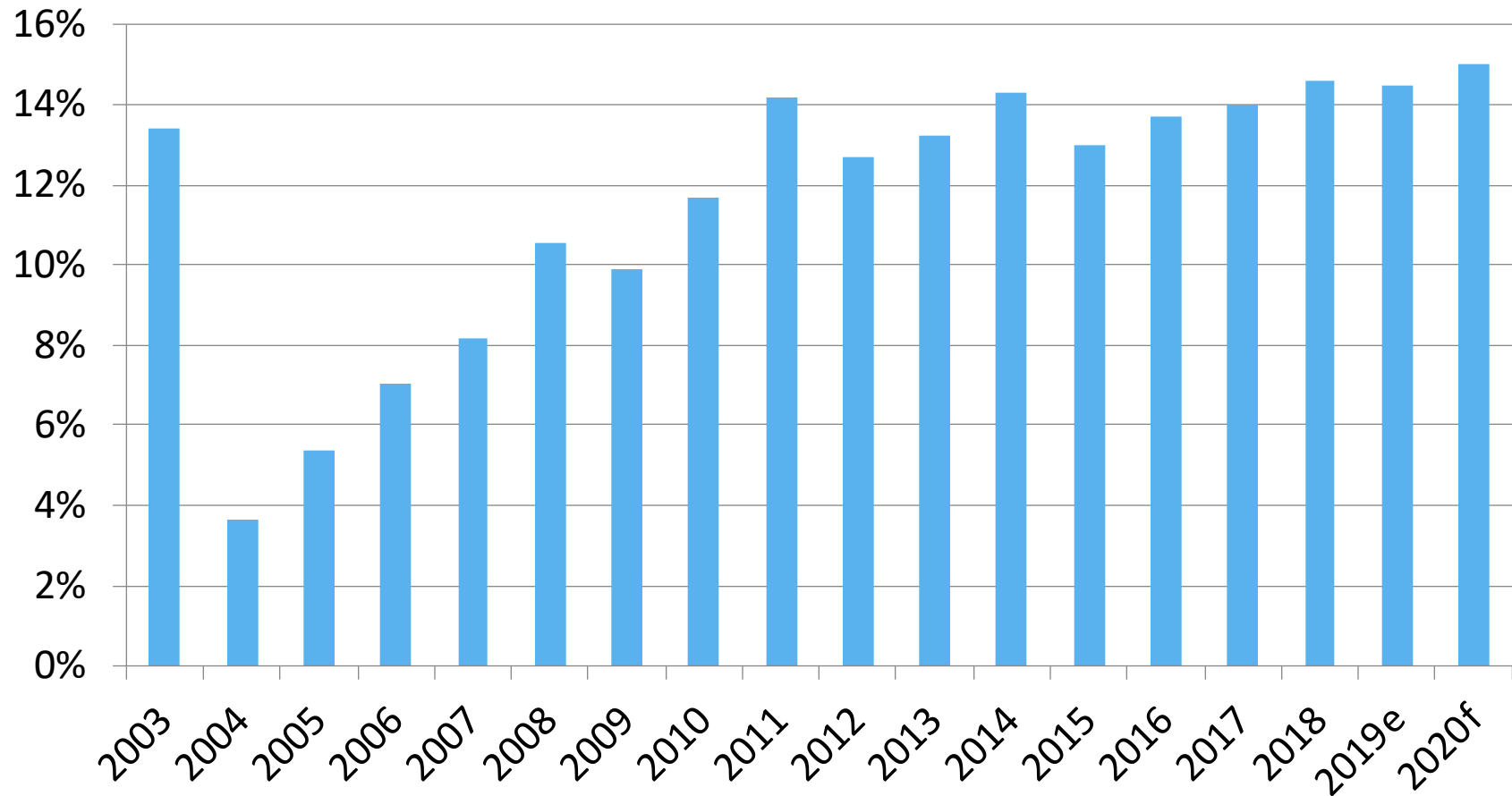


**2018: \$323.14, +13%  
and a new record**

# Export share of production also set a record in 2018

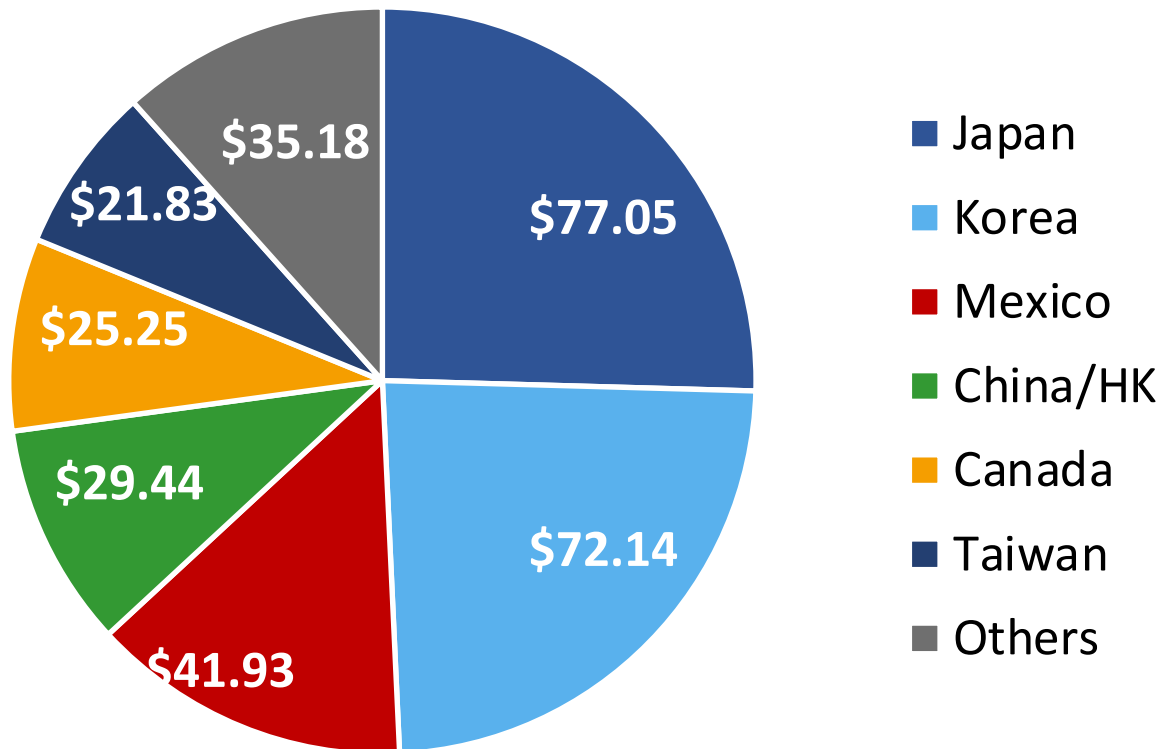


## Percent of Beef & Variety Meat Production Exported



# Beef export value per head by market

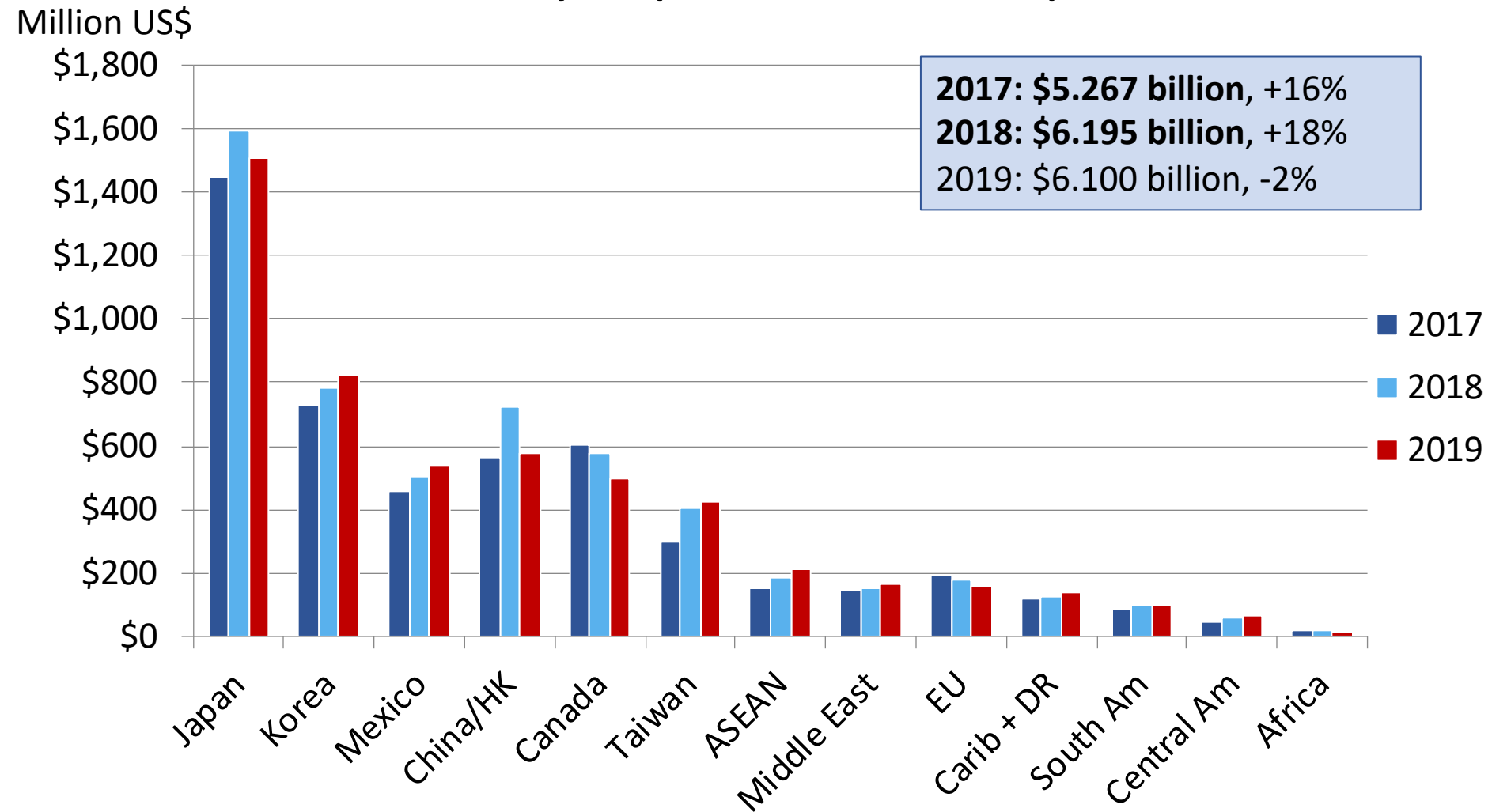
Jan – Sep 2019 value per head of fed cattle slaughtered = \$310.77, -3%





# Japan remains the top value market in 2019, and exports to Korea could reach \$2 Billion

## January – September Beef/BVM Exports



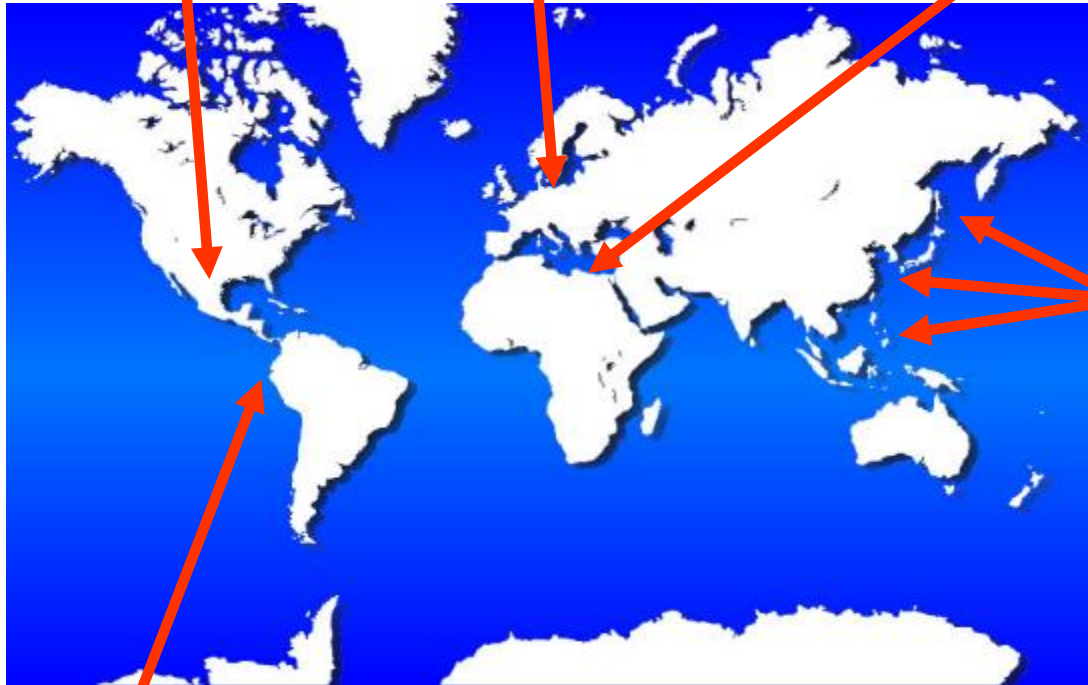


# Maximizing beef carcass value

**Rounds, clods, skirts  
& variety meats to  
Mexico**

**Full-sets to the  
EU**

**Variety meats & middle  
meats to the Middle East**



**Short plates, short ribs,  
chuck rolls, skirts, middle  
meats & variety meats to  
Japan, Korea, Hong Kong,  
Taiwan & S.E. Asia**

**Chuck rolls, rounds, skirts &  
variety meats to C/S America**