

Backyard Poultry Production: The Basics

RICHARD BLATCHFORD, PHD
COOPERATIVE EXTENSION SPECIALIST
DEPT. OF ANIMAL SCIENCE
UNIVERSITY OF CALIFORNIA, DAVIS



Assistant Specialist in Cooperative Extension, Poultry Small to Large Scale

Poultry Husbandry, Behavior, and Welfare

Pastured Poultry

Small Flock/Heritage Turkey Group

Broiler Lighting Programs

Backyard Flocks:

Housing Systems for Laying Hens

Physical Condition Assessments -

Looking for participants

On-farm Assessment Tools

A Little History...

Chickens domesticated in Asia ~10,000 years ago

Mostly valued for religion and fighting



Roman Empire

Developed agricultural
breeds

Sacrificial/ Augurs
- Publius Claudius
Pulcher

Fighting



19th Century



Resurgence of poultry
breeding

Breed societies

Introduction to NA

Creation of bantams

Breeds of Poultry

Light/ Egg Breeds



Heavy/ Dual Purpose Breeds



Egg Colors – All About the Ear Lobes

Brown Eggs



Welsummer



Maran



Egg Colors – All About the Ear Lobes

White Eggs



Leghorns



“Easter Eggers”

Araucanas



Americaunas



Heavy/ Dual Purpose

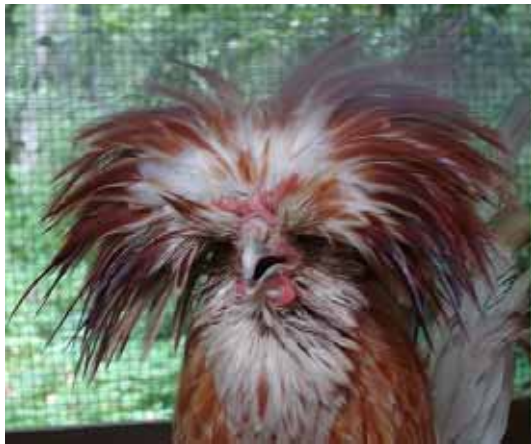


Jersey
Giant



Wyandotte

Fancier/ Show Chickens



What Now?



Brooding

Brooding

- Hatching to Feathering



Pullet Rearing

- Fully Feathered to Egg Laying



Temperature and Humidity

Temperature

- Measure under heat and on edge
- Start 90-95F, reduce by 5F each week

Humidity

- ~ 50% Throughout

Watch Behavior



Lighting and Ventilation

Colored Bulb vs Dark Bulb

Generally 23-24 hours first 3-7 days

Follow breed management guidelines if using more commercial type strains

Natural vs Artificial Light

Prevent Ammonia Build-up

Source of fresh air, but no drafts during brooding (shielding)

Adjust Humidity

Feed and Water

Starter diet (higher protein ~ 20%)

Mash vs Crumbles

Feeders

- Bell or Trough
- Metal vs Plastic



Clean fresh water at all times

Marbles in waterers

Be Consistent with Type



Bedding

Soft and Absorbent

- Pine Shavings (not too fine)
- Rice Hulls
- Not straw, paper

Keep Clean and Dry

- 3-5 Inches
- Foot Problems, Burns

Mortality

- ~ 1-2% expected



Pullet Rearing

No Supplemental Heat

Should have same environment as hens will have

- Similar feeder and waterer
- Perches
- NO nestboxes

Lighting (in general)

- Decrease from 23 to 10-11 hours each week by a couple hours/week
- Maintain at 10-11 hours until 18 weeks
- Increase by 30 min each week until 16 hours/day

Watch for picking/ injuries



Housing Considerations

Nesting

Perching

Foraging

Dust-bathing

Cleaning

Disposal of Manure





Nutrition

Commercial Diet



Fresh, Clean Water



Food Scraps



Issues

Ordinances

Noise

Odor

Manure

Pests

Disease

Abandonment

Euthanasia/ Slaughter

