



EQUITABLE ACCESS

to Healthy & Local Food IN MARIN COUNTY

“Healthy eating is one of the most powerful tools we have to prevent the onset of disease”
—USDA

HEALTHY RETAIL

- Only 11% of stores in the Canal and 0% of stores in Marin City met “Neighborhood Food Store Quality” standards.
- Marin City does not have a single grocery store for its residents. It is a food desert.
- Not a single retail food store in West Marin accepts WIC.
- These stark retail food conditions are found in Marin’s communities of color where residents also have high rates of sugar-sweetened beverage consumption and diet-related diseases, including obesity, diabetes and other chronic diseases.

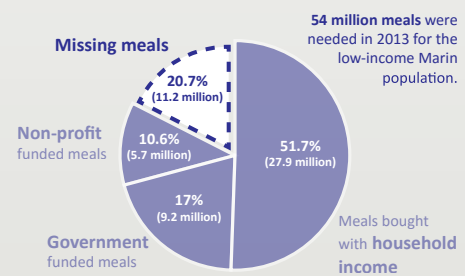


In Marin County, 1 in 5 residents is at risk of food insecurity.

FOOD ASSISTANCE

- Only about half of eligible Marin County residents are enrolled in CalFresh (also known as ‘food stamps’).
- Marin County ranks 55 out of 58 counties in enrolling eligible people onto CalFresh.
- Marin County is missing out on \$21.6 million in federally funded CalFresh benefits every year, representing \$38.6 million annually in lost economic activity.

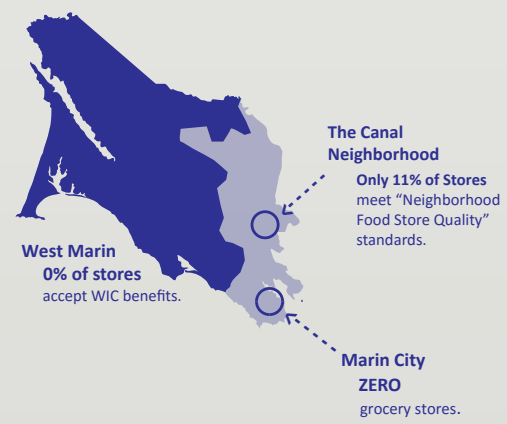
Low-income households in Marin County were missing 11.2 million meals in 2014



From the 2016 ‘Missing meals in San Francisco and Marin’ report by the SF-Arin Food Bank

COMMUNITY FOOD PRODUCTION

- Urban agriculture has been shown to raise home values, improve health, teach ecological stewardship, and build positive communities, raising the level of food security in low-income communities.
- Up and down Marin’s 101 corridor, demand for community garden plots outpaces supply.



Facts and figures from the “Equitable Access to Healthy and Local Food in Marin County” report published by the Marin Food Policy Council, November 2016