

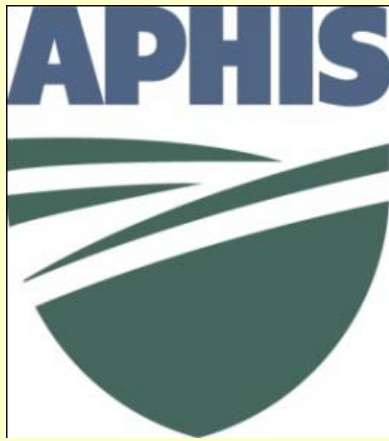
Grape Certification Programs: U.S. and Canada

Nancy Sweet
Meeting, NCPN Grapes
May 2, 2012

Grapevine Material Moving into U.S.



- ❖ *Vitis* plant material prohibited entry into United States (7 CFR 319.37-2) except from...



- ❖ Canada (7 CFR 319.37-5(b)(1) and (b) (3)):
 - phytosanitary certificate,
 - CFIA finds grape plants grown in Canada to be free of specified diseases

How do FPS and other clean plant centers import plants from around the world?

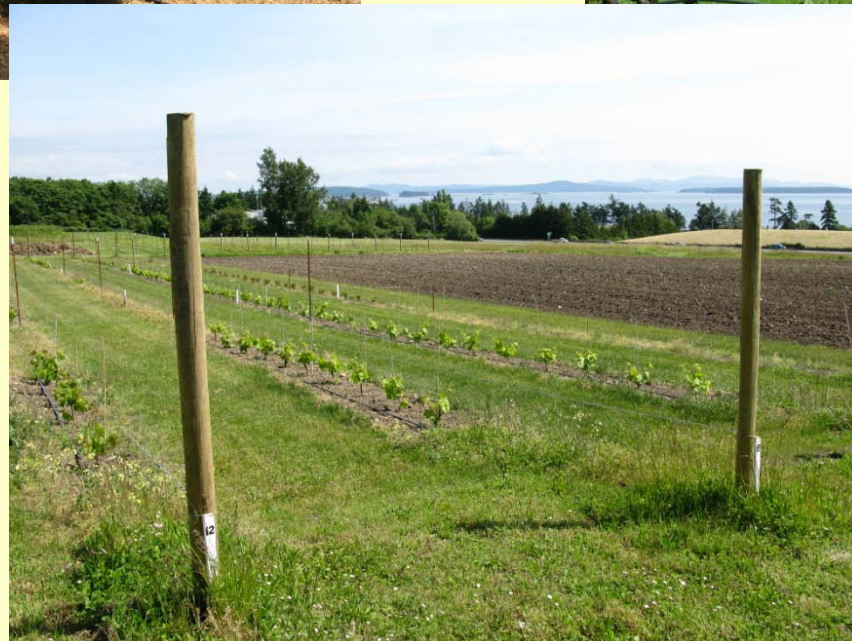
Permit from USDA

Canada



- ❖ **Canadian National Certification System and Plant QT**
- ❖ **Canadian Food Inspection Agency (CFIA)**
- ❖ **Virus tested collections at Centre for Plant Health, Sidney, B.C.**

Sidney, B.C.



Import/Export Requirements for Grapevines

❖ Grapevine Export Directive **CFIA D-97-06**

1. Still under review – draft went out a year ago
2. Moving toward systems approach

❖ Import Reqmts for Grapevine Propagative Material **CFIA D-94-34**

❖ List of Sources Approved to Import ...Grape Propagative Material to Canada **CFIA D-94-35** (2009)

1. U.S. states with CFIA approved virus certification programs (CA, OR, WA)
2. Grape propagative material is certified free of regulated diseases for export to Canada



- ❖ **North American Plant Protection Organization:
Canada, Mexico, U.S.**
- ❖ **Regional Standard for Phytosanitary Measures
RSPM #35 (2009):
Guidelines for Movement of Stone and Pome
Fruit Trees and Grapevines into a NAPPO
Member Country**

RSPM #35

- ❖ Describes the NAPPO grapevine certification program as primarily designed to control phytoplasmas, viruses and virus-like agents
- ❖ Systems approach defined:

“Various independent components such as virus-testing, field inspection, isolation distances, and vector control, all work together to minimize the spread, entry and establishment of pests”.

Grapevine Certification Programs in the United States



State Certification Programs

❖ Grapevine Registration & Certification Programs for states within U.S.:

California (rev. 2010)

Missouri

New York (under revision)

Oregon

Washington

Common Features

1. Voluntary participation
2. DOAs oversight, regulations
3. Specified levels of planting:
foundation blocks, registered/increase
blocks, certified material at nurseries
4. Vine tracking mechanism (tags) from
original source vine

con't

Common features con't.

5. Isolation requirements

Usually 100 feet

Sometimes 30 feet

6. Inspection/testing/monitoring

DOA

Univ. monitor FVs (UCD; WSU)

7. True to type (ID) requirement

State QT Programs for Grapes

- ❖ Some states have QT programs for grapevines coming in from other states within U.S.:

Idaho, Missouri, New York,
Oregon, Washington

- ❖ California: county quarantine programs

Collaborative Tools



UNIVERSITY OF CALIFORNIA AGRICULTURE AND NATURAL RESOURCES
COLLABORATIVE TOOLS
 A SIMPLE WAY TO STAY CONNECTED

HELLO, NANCY SWEET

[Home](#) | [Profile](#) | [Logout](#) | [Help](#) | [ANR Portal](#)

Group: Model Regulations for Grape Cer... ▾

DISCUSSIONS | **DOCUMENTS** | CALENDAR | TASKS | MEMBERS | EDIT ROSTER | EDIT GROUP

DOCUMENT MANAGER - MODEL REGULATIONS FOR GRAPE CERTIFICATION PROGRAM - WORKING GROUP

You can add documents into different groups, or use the file version system which tracks a single file through edits from your group.

- [Start New Document Group](#)
- [Upload Batch of Files to Document Group](#)
- [Start New File Version Group](#)

DOCUMENT GROUPS

CALIFORNIA GRAPEVINE REGISTRATION AND CERTIFICATION PROGRAM DOCUMENTS	UPLOADED	UPLOADER	Create Zip	Edit Group	Add Document
Regulations- California Grapevine Registration and Certification Program- rev- 2010	3/15/2012	Nancy Sweet		Edit Name	Delete
Statement of Reasons for 2010 Revisions	3/15/2012	Nancy Sweet		Edit Name	Delete
CANADIAN REGULATIONS DOCUMENTS	UPLOADED	UPLOADER	Create Zip	Edit Group	Add Document
Canadian Certification System talk- Carol Masters (CFIA)- May 2010	4/23/2012	Nancy Sweet		Edit Name	Delete
CFIA D-94-34- Importation Requirements for Grapevine Propagative Material	4/23/2012	Nancy Sweet		Edit Name	Delete
CFIA D-94-35- Sources Approved to Export Grape Propagative Material to Canada	4/23/2012	Nancy Sweet		Edit Name	Delete
CFIA D-97-06- Plant Protection export certification program for grapevine nursery stock	4/23/2012	Nancy Sweet		Edit Name	Delete
IDAHO GRAPE REGULATIONS DOCUMENTS	UPLOADED	UPLOADER	Create Zip	Edit Group	Add Document
Grape Planting Stock	3/15/2012	Nancy Sweet		Edit Name	Delete
Virus Free Certification of Nursery Stock	3/15/2012	Nancy Sweet		Edit Name	Delete
MISSOURI GRAPE REGULATIONS DOCUMENTS	UPLOADED	UPLOADER	Create Zip	Edit Group	Add Document
Missouri Plant Law Rules	3/15/2012	Nancy Sweet		Edit Name	Delete
Missouri Statute	3/15/2012	Nancy Sweet		Edit Name	Delete