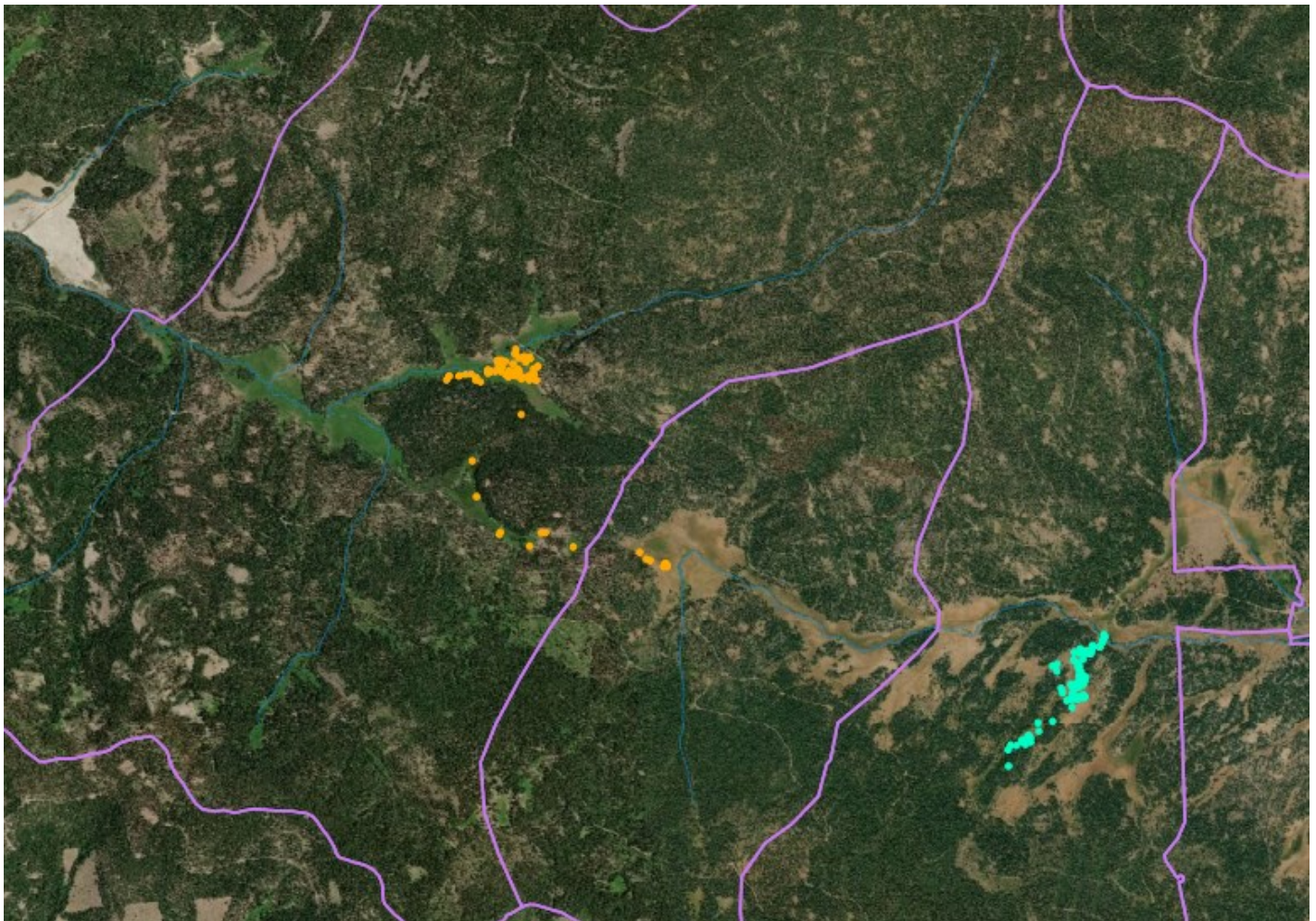


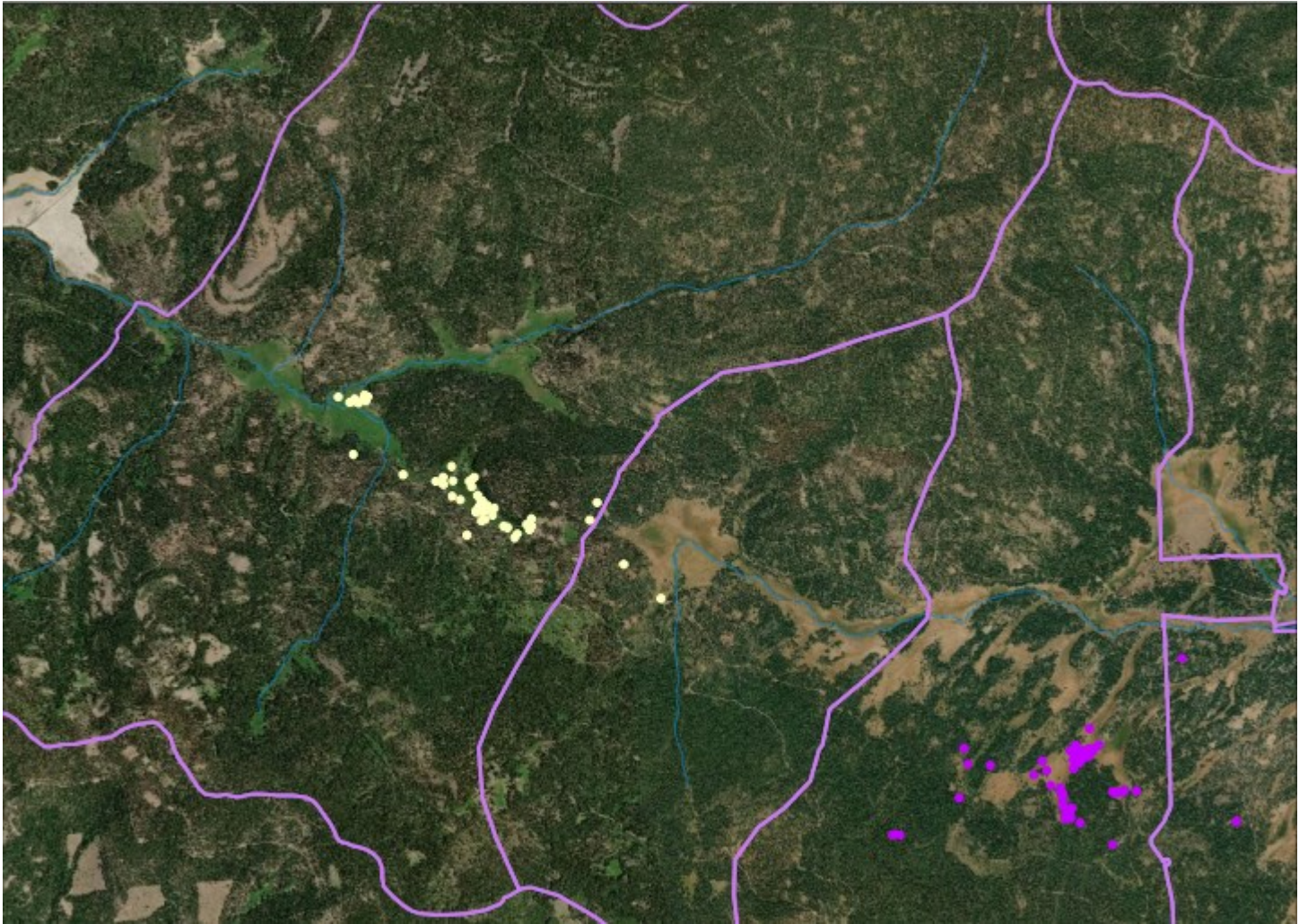
Grazing Distribution & Management in Northern California

Livestock grazing management in Northern California is complex, balancing economic viability of producers with land management objectives. The cattle operations in the region rely on a diversity of forage bases, including valley grasslands and oak woodlands, to chaparral and forested landscapes with mountain meadows. Each of these landscapes present their own unique suite of challenges, including: landlord requirements specifically pertaining to forage utilization (e.g. U.S. Forest Service, Department of Fish and Wildlife), livestock drinking water availability, invasive weeds, predators, fire, drought, floods and more.

University of California Cooperative Extension (UCCE) develops scientific research programs and implements outreach initiatives, working with livestock producers and land managers to promote sustainable grazing management. UCCE has partnered with UC Rangelands, California State University, Chico; and New Mexico State University to track cattle throughout the grazing season on the Plumas National Forest. This GPS information will provide the foundation to equip livestock producers across the West with new tools to bridge genetics and rangeland management.



*The daily movement of two cows (Orange collar 3036 and Blue is collar 3102)
July 4, 2018 on the Plumas National Forest.*



*The daily movement of two cows (Yellow collar 17 and Purple is collar 23)
August 16, 2018 on the Plumas National Forest.*



Cow equipped GPS collar .

For additional information:

Tracy Schohr
Livestock and Natural Resources Advisor
Butte Plumas and Sierra Counties
tkschohr@ucanr.edu
916-716-2643
ucanr.edu/sites/Rangelands/

David Lile
Livestock and Natural Resources Advisor
Lassen County
dfile@ucanr.edu
(530) 251-8133