

WDR and a Vote

California Rice Commission



Overview of Water Quality Programs

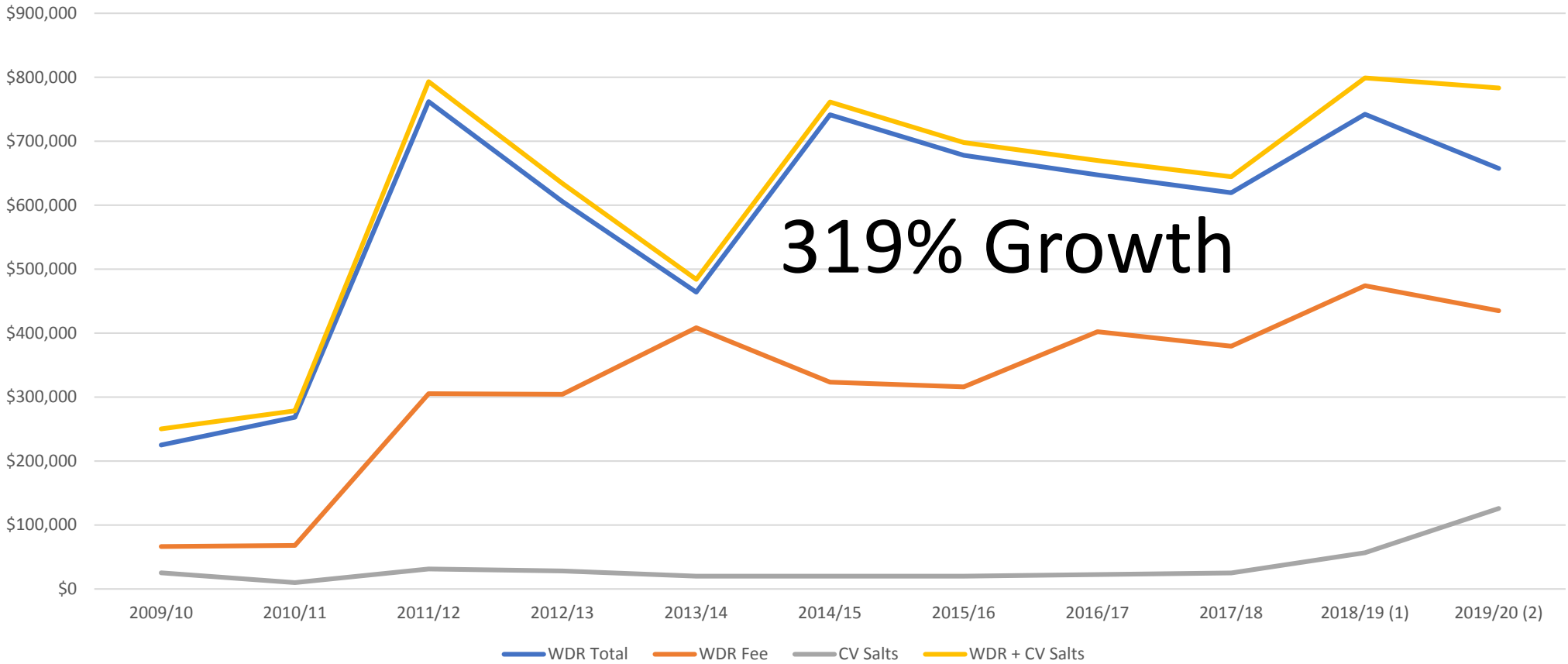


Rice Pesticide Program (1990)

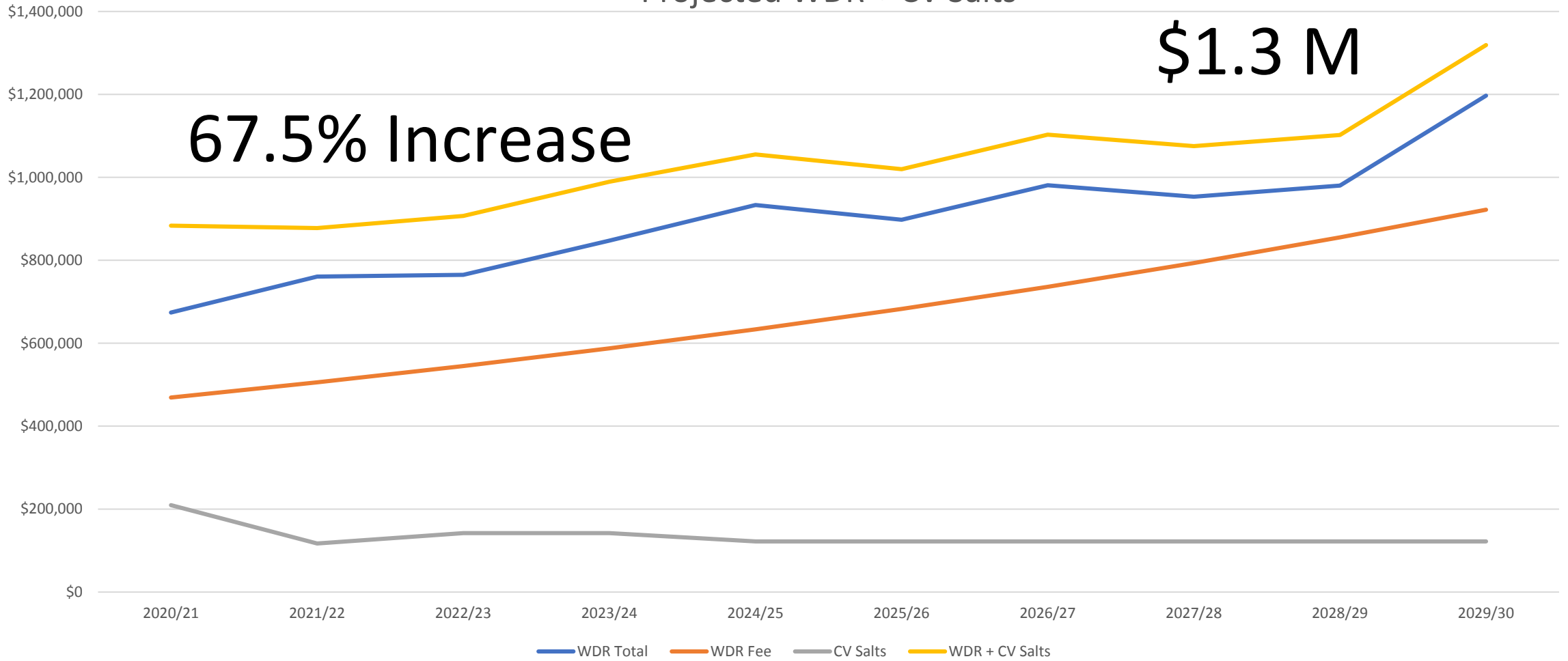
Waste Discharge Requirement - WDR

- 2004 - Surface water
- 2014 - Added groundwater
- 2019 - Adds nitrate, drinking water wells (2022 testing) and salinity

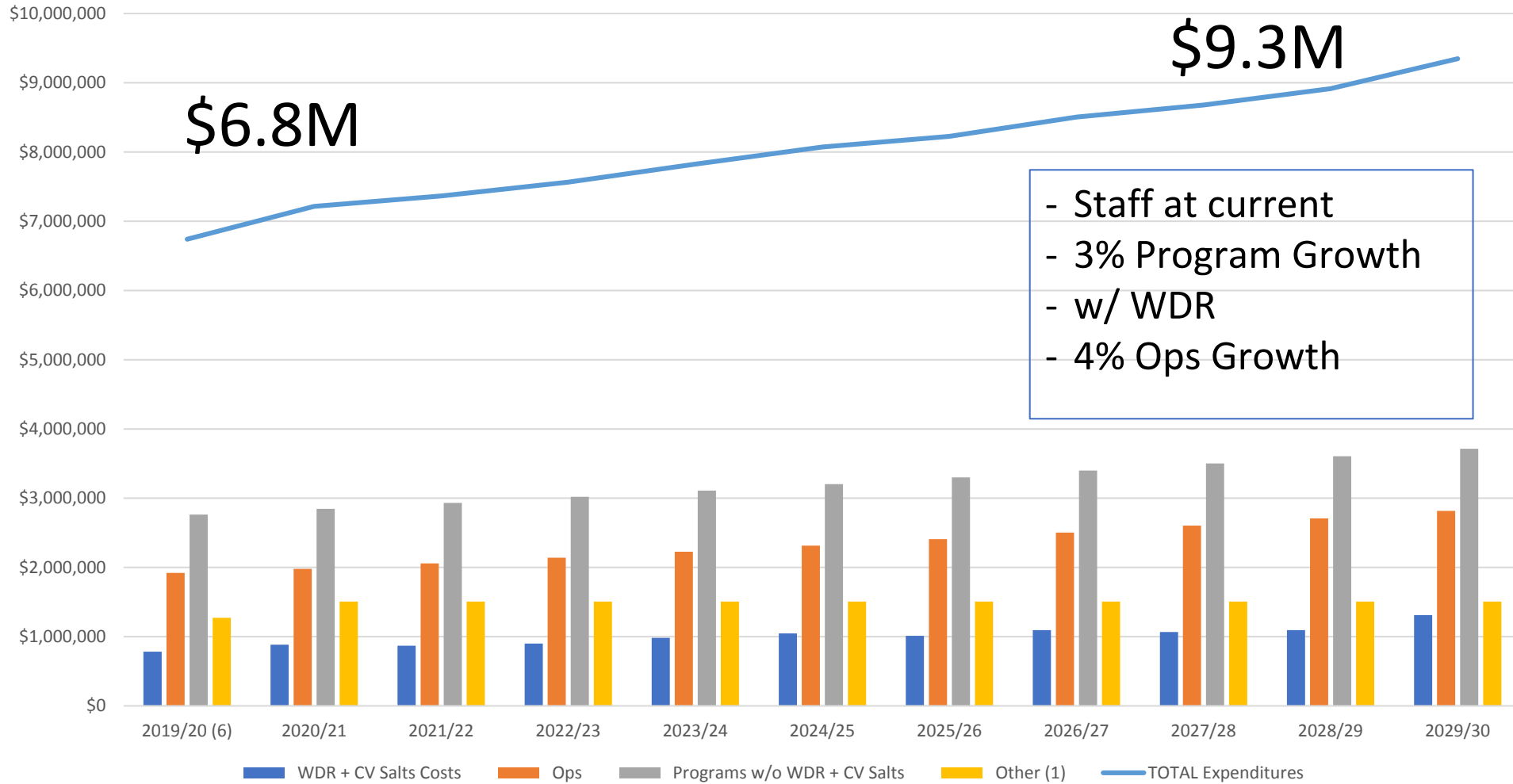
Historic WDR Costs



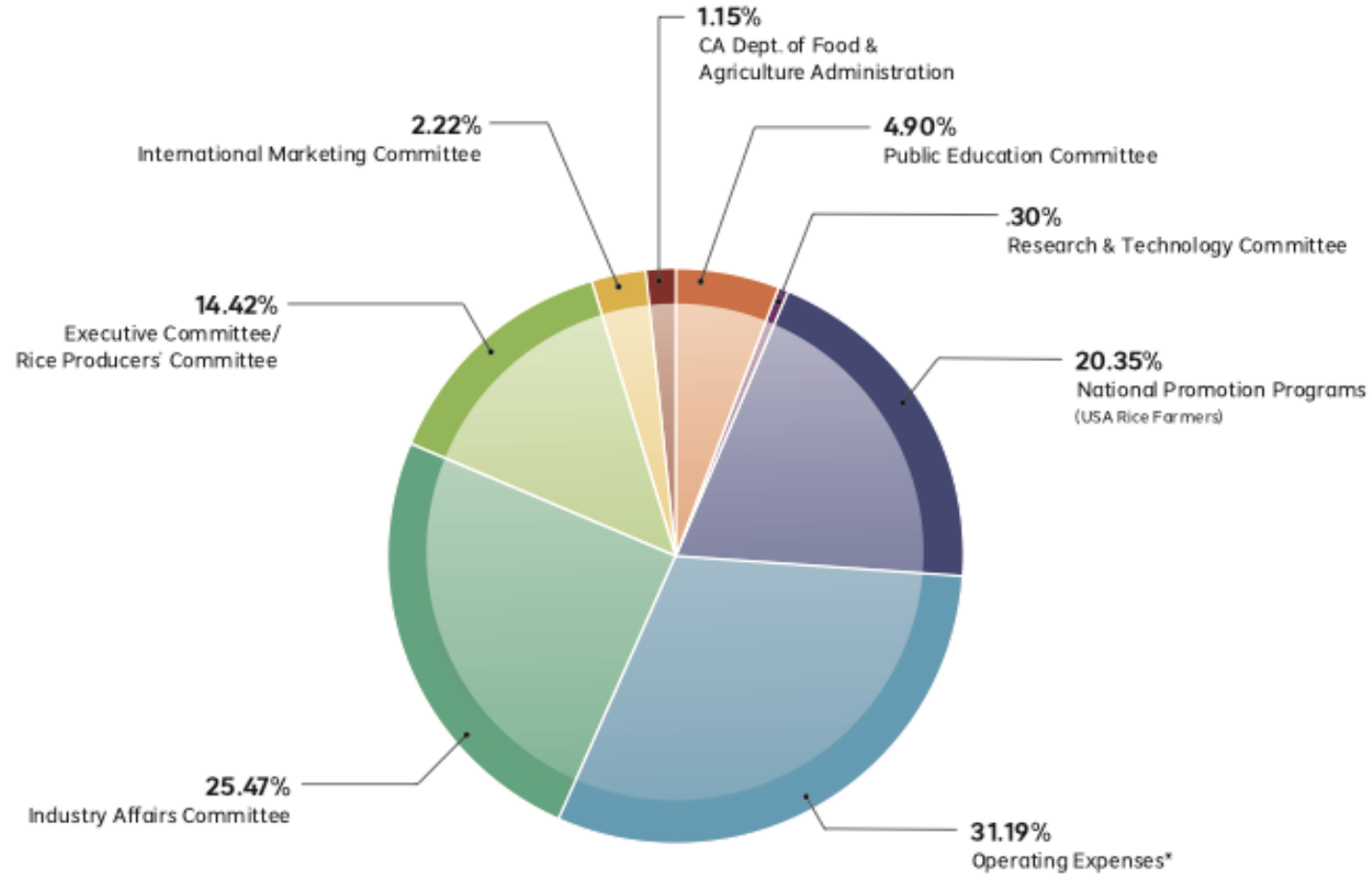
Projected WDR + CV Salts



Projected Expense - 10 YRS

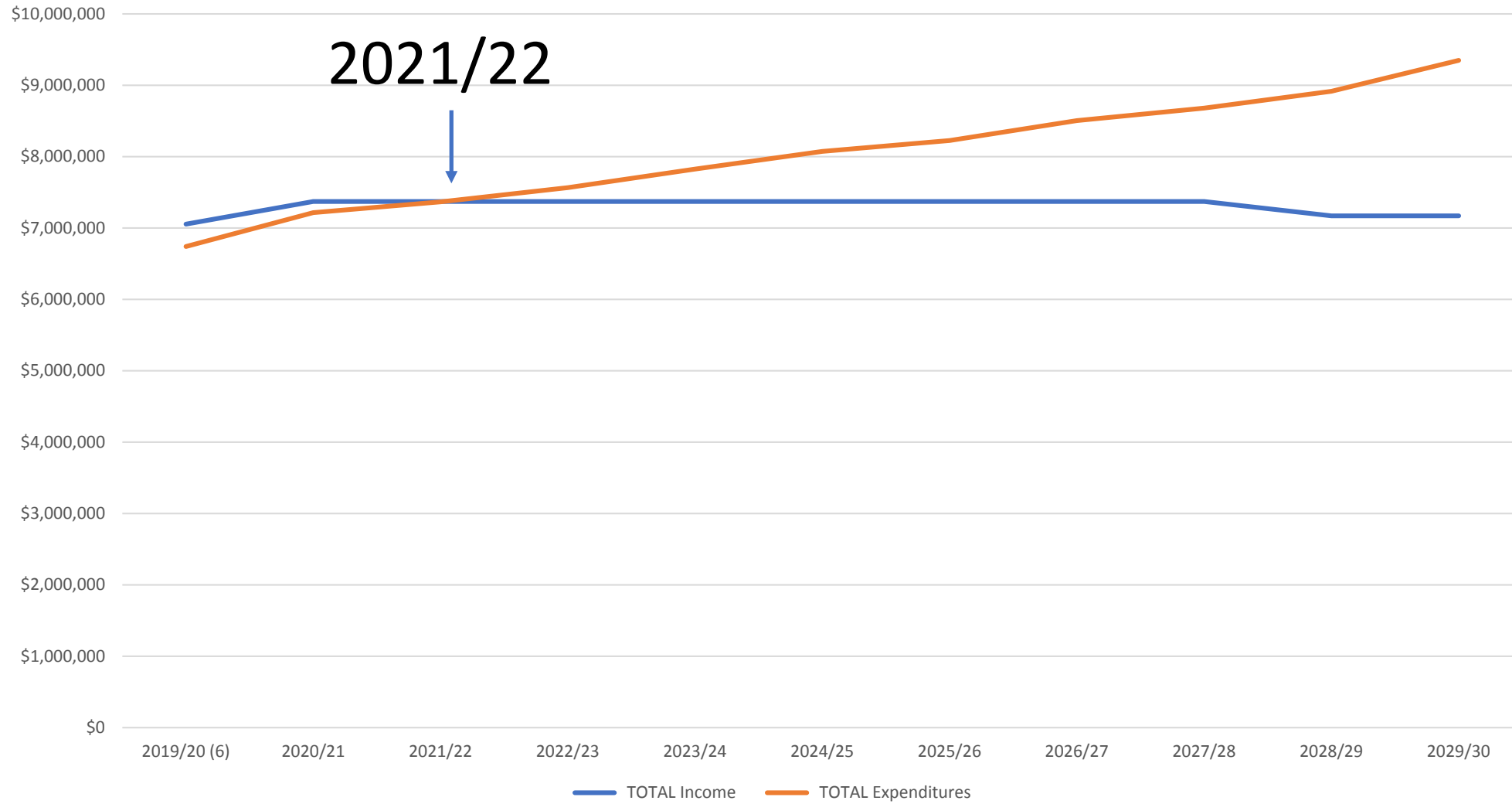


FISCAL YEAR 2018/19 TOTAL BUDGET— \$6,123,015



*NOTE: Chart represents direct spending by category; operating expense not allocated to programs. Audited financial statements available upon request.
As of 12/9/19 "draft" numbers

Total Income v Total Expense - 10 YR Projection



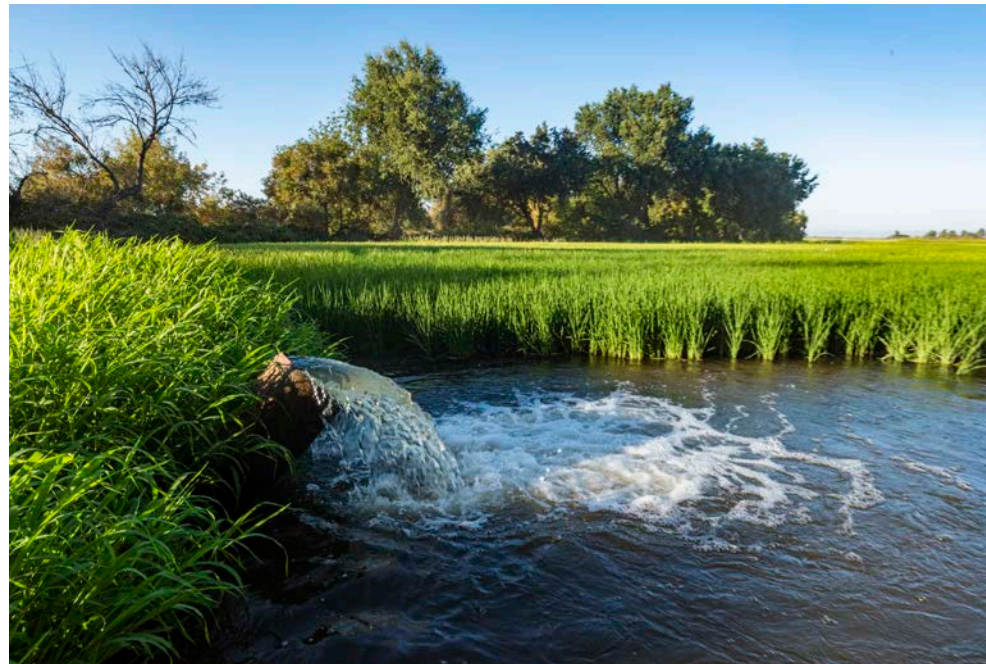
Key Benefits of Rice WDR

Rice Specific WDR

- Only commodity specific WDR
- No APN
- Significantly lower monitoring and reporting requirements
- Lower SWRCB fee
 - 87¢ v \$1.08 per acre

Total Cost

- **\$1.60 per acre (plus staff)**
- \$4.00 - \$7.00 acre



Major Amendment

Ballots out June – 60 days

Reminder in early July

Asked to vote to increase the assessment cap from 15¢ to 20¢ per hundredweight

- Subject to annual budgets



Thank you & Questions

