



Western Grapeleaf Skeletonizer

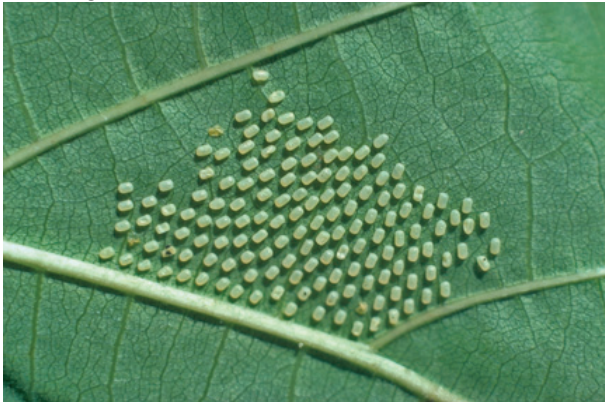
LOOK FOR THIS MOTH AND THE LEAF DAMAGE IT CAUSES



Damage caused by 1st - 4th stage larvae feeding on underside of leaf



Fifth stage larvae feed individually and "skeletonize" leaf leaving only main veins



Egg mass laid on underside of leaf



Third stage larvae feed as a group



Fourth stage larvae feed side-by-side



Fifth stage larvae feed individually

Look for this pest on: **Grape**, **Boston Ivy**, and **Virginia Creeper**

IF YOU SEE THIS PEST PLEASE NOTIFY:

Sonoma County Agricultural Commissioner (707) 565-2371
UC Cooperative Extension Sonoma County (707) 565-2621



Male and female moths of *Harrisina brillians*