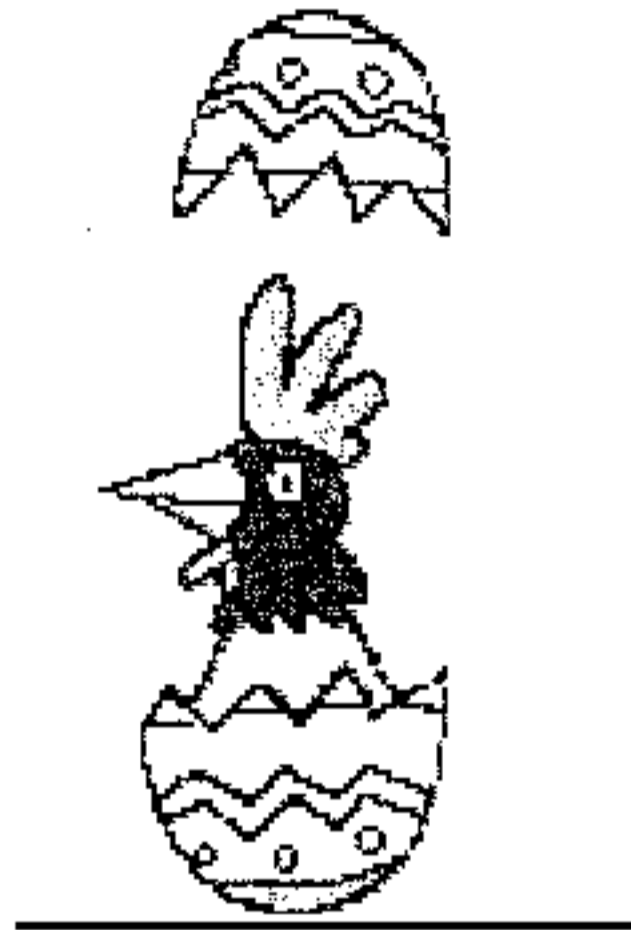


Stanislaus County 4-H

Poultry Proficiency

Level 3



Poultry Proficiency Level 3

Safety and Basic Skills

Feather patterns

Breeds (Standard Classes)

True & False

Parts of the Male

Parts of the Female

Parts of the Comb & Combs

Parts of an Egg

Parts of the Foot

Parts of the Feather

Parts of the Wing

Poultry Judging (Basics)

Feed Identification

Showmanship

SAFETY AND BASIC SKILLS

Poultry Level 3

Name _____ Club _____

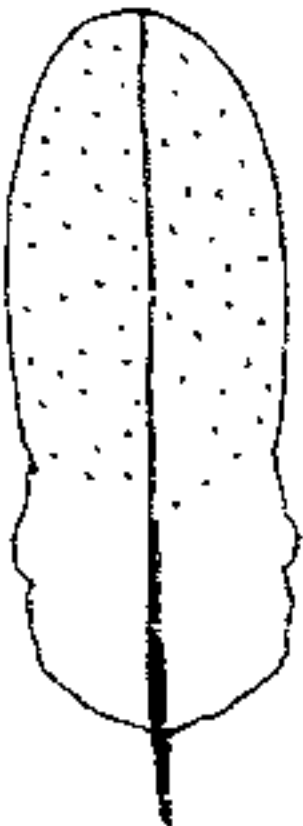
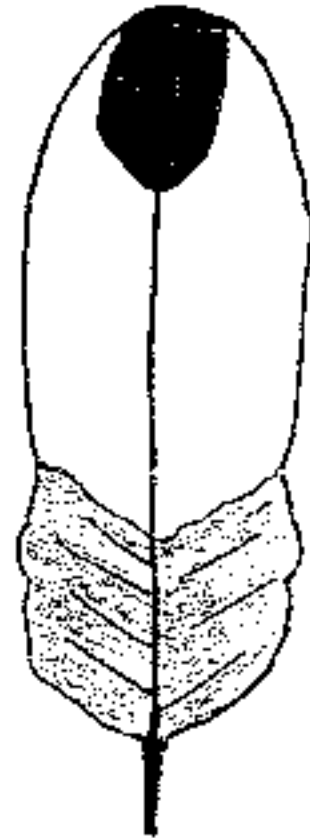
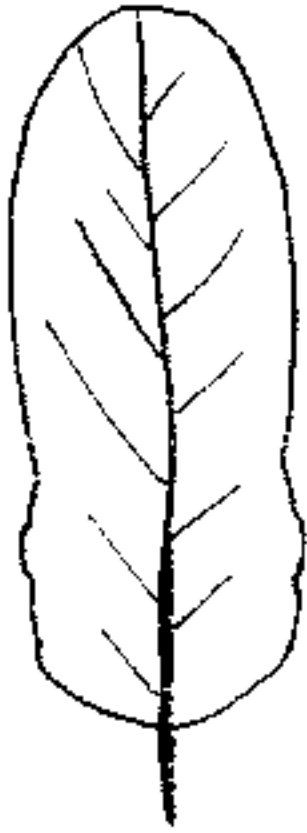
Level 3

	Wrong	Partially Correct	Mostly Correct	Correct
Points	0	1-2	3-4	5
1. How should you place your bird in a cage?				
2. How should you introduce a new bird to your flock?				
3. How should you properly store your feed for your birds?				
4. How long is incubation for a Chicken egg?				
5. How much protein should you have in your layer crumble or pellet feed?				

- 6. ____ Cock A. Miniature chickens usually 1/4 to 1/5 the size of a large fowl.
- 7. ____ Drake B. Subdivision of a breed according to color, comb type, beard or feathering.
- 8. ____ Bantam C. Female chicken over a year.
- 9. ____ Hen D. Male duck
- 10. ____ Variety E. Male chicken over one year-old.

Feather Patterns





Breeds (Standard Classes)

- 1. Name three of the American Breeds in this Class.**
- 2. What do the three breeds in the Asiatic class have?**
- 3. Where did the English Class originate?**
- 4. Name three breeds in the Mediterranean class.**
- 5. How many weight classes do the geese have?**
- 6. Are there Bantam ducks?**
- 7. Which Class of poultry are used for egg producers?**
- 8. Which chicken has a Buttercup Comb?**

Score _____

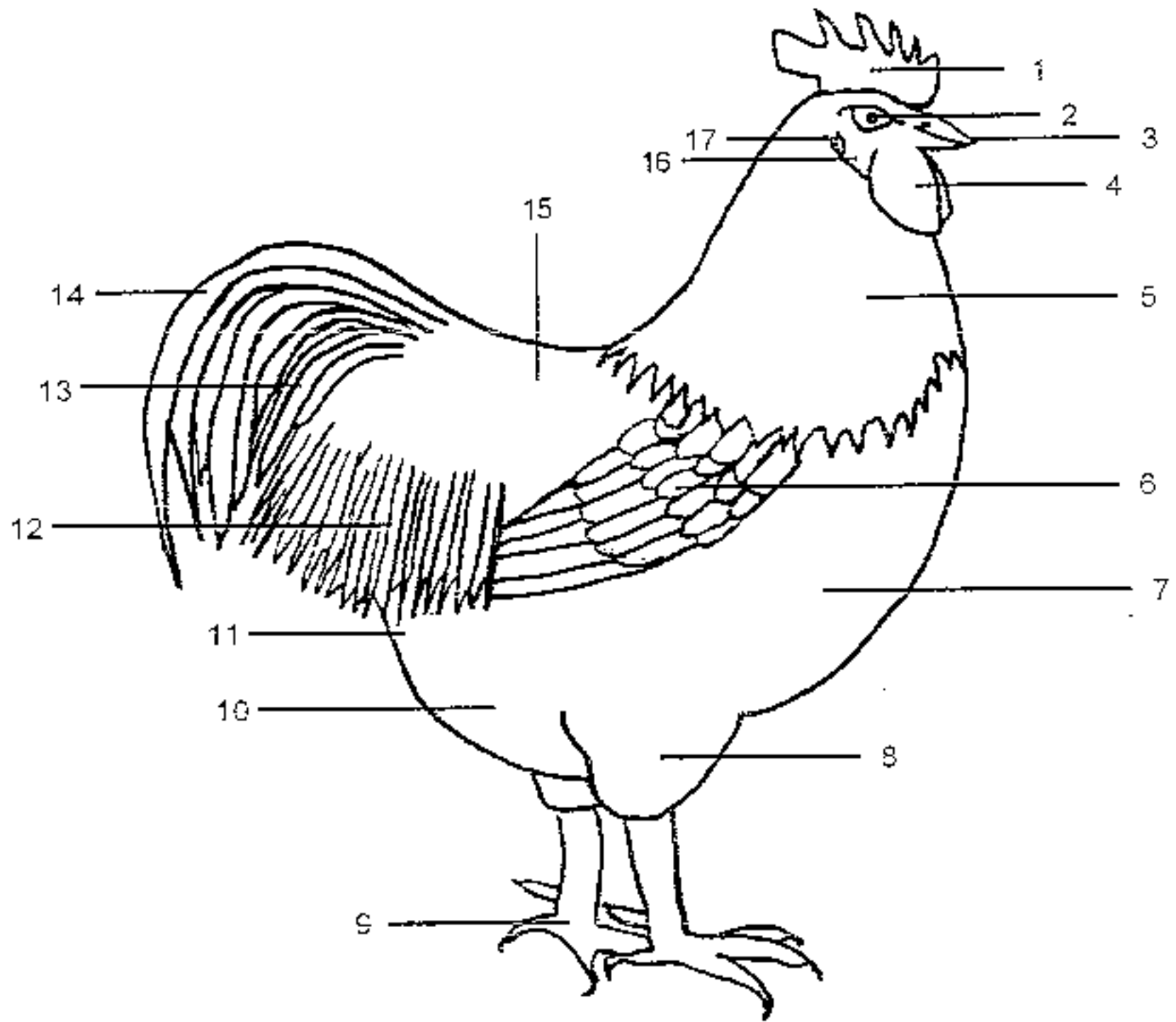
TRUE/FALSE QUIZ

Poultry Level 3

Circle the correct answer. 2 points for each correct answer, for a maximum of 40 points.

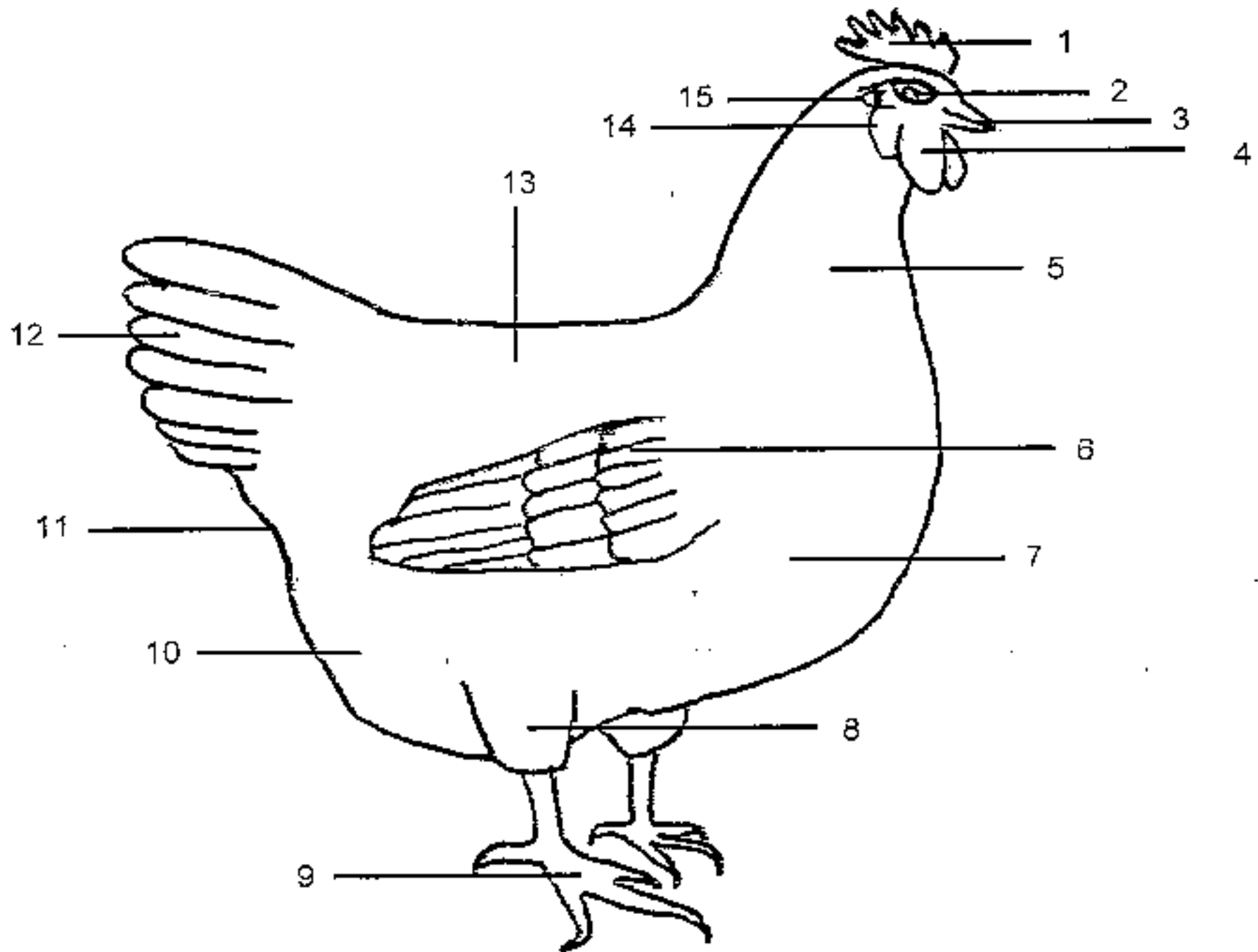
1. T F Day old chicks should be vaccinated for Merck's and other diseases.
2. T F Baby turkeys are called Tom.
3. T F Silkies have black skin.
4. T F The cape is located on the back neck of a female bird.
5. T F The Favorolle chicken belongs to the Continental class.
6. T F The incubation period for most duck eggs is 28 days.
7. T F "Dubbing" means to cut the comb, wattles and ear lobes of male game birds.
8. T F The most important nutrient a bird needs is fresh, clean water.
9. T F Viruses are passed from farm to farm by wild birds, mosquitoes & people.
10. T F Modern game was admitted to the Standard of Perfection in 1874..
11. T F Biosecurity should be practiced only if you exhibit your poultry.
12. T F Poor ventilation in the coop can lead to respiratory problems in poultry.
13. T F Raised, crusty leg scales are a sign of mites.
14. T F Some diseases can be prevented with vaccines.
15. T F Ducklings and goslings are types of waterfowl.
16. T F The best way to carry poultry is by their legs.
17. T F The color of a hen's earlobe will tell what color her eggshell will be.
18. T F Single, rose, pea and cushion are all types of combs.
19. T F A roosters neck feathers are called saddle feathers.
20. T F Rode Islands, Plymouth Rocks and Silkies are all in the American Class..

Parts of the Male



- | | | |
|---------|----------|----------|
| 1 _____ | 7 _____ | 13 _____ |
| 2 _____ | 8 _____ | 14 _____ |
| 3 _____ | 9 _____ | 15 _____ |
| 4 _____ | 10 _____ | 16 _____ |
| 5 _____ | 11 _____ | 17 _____ |
| 6 _____ | 12 _____ | |

Parts of the Female



- 1 _____
- 2 _____
- 3 _____
- 4 _____
- 5 _____

- 6 _____
- 7 _____
- 8 _____
- 9 _____
- 10 _____

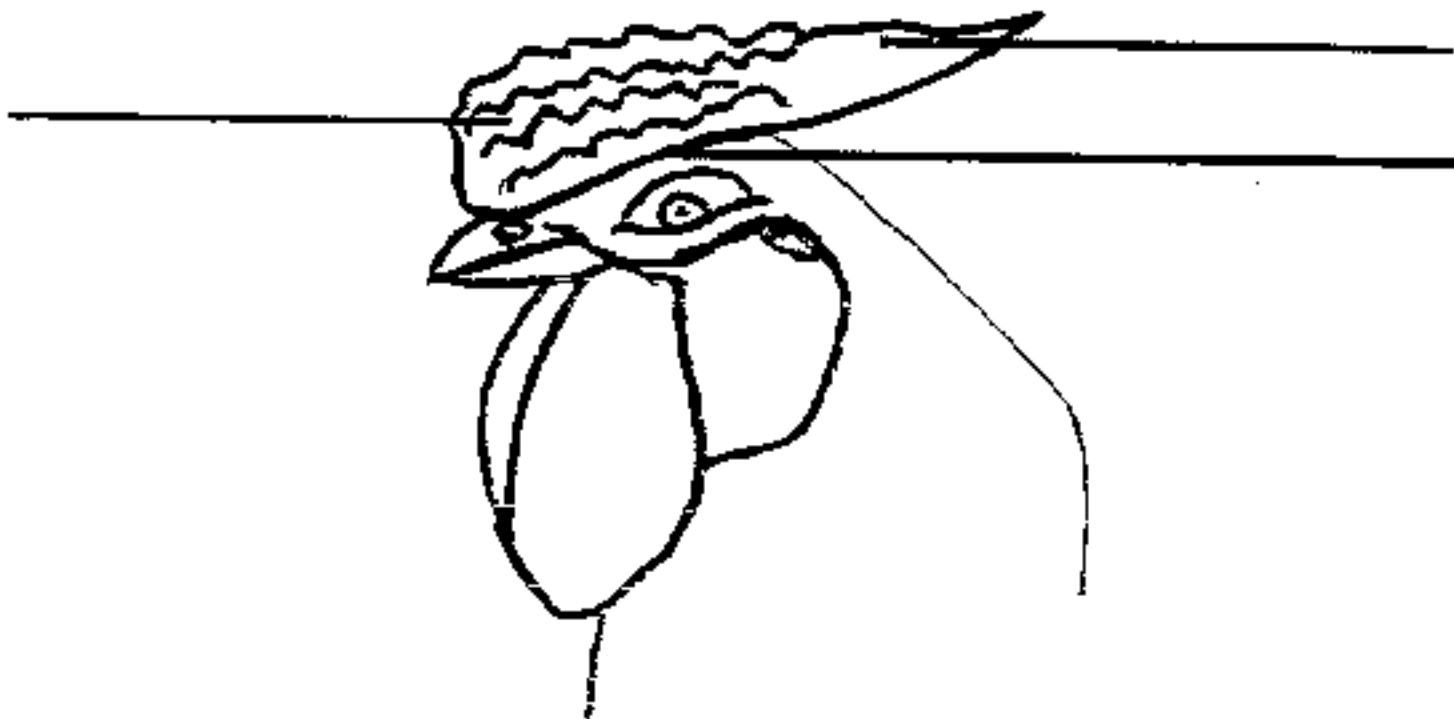
- 11 _____
- 12 _____
- 13 _____
- 14 _____
- 15 _____

Parts of the Comb

Single

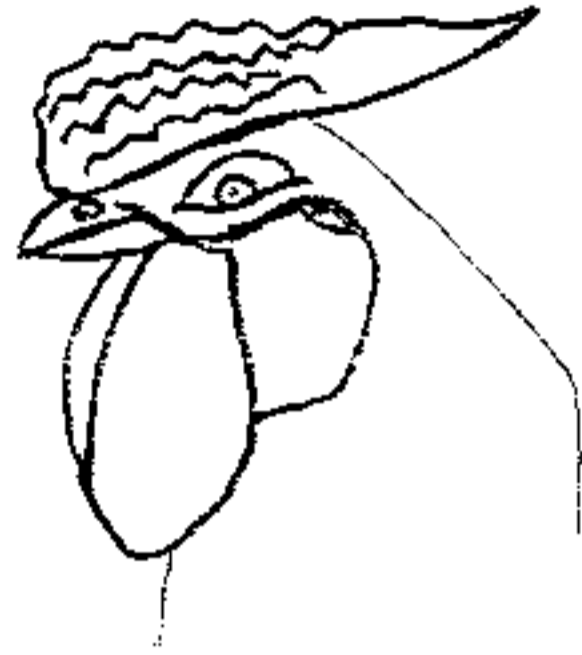


Rose



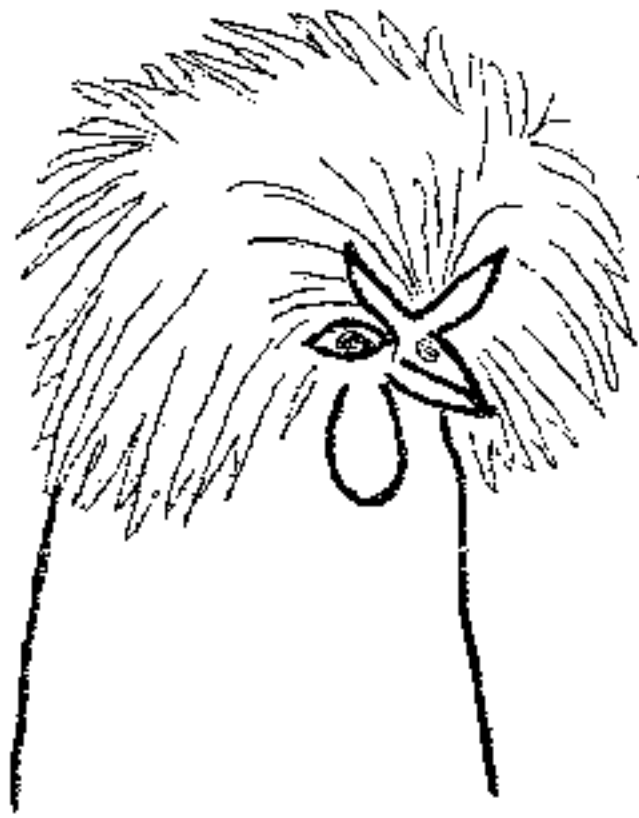
Combs



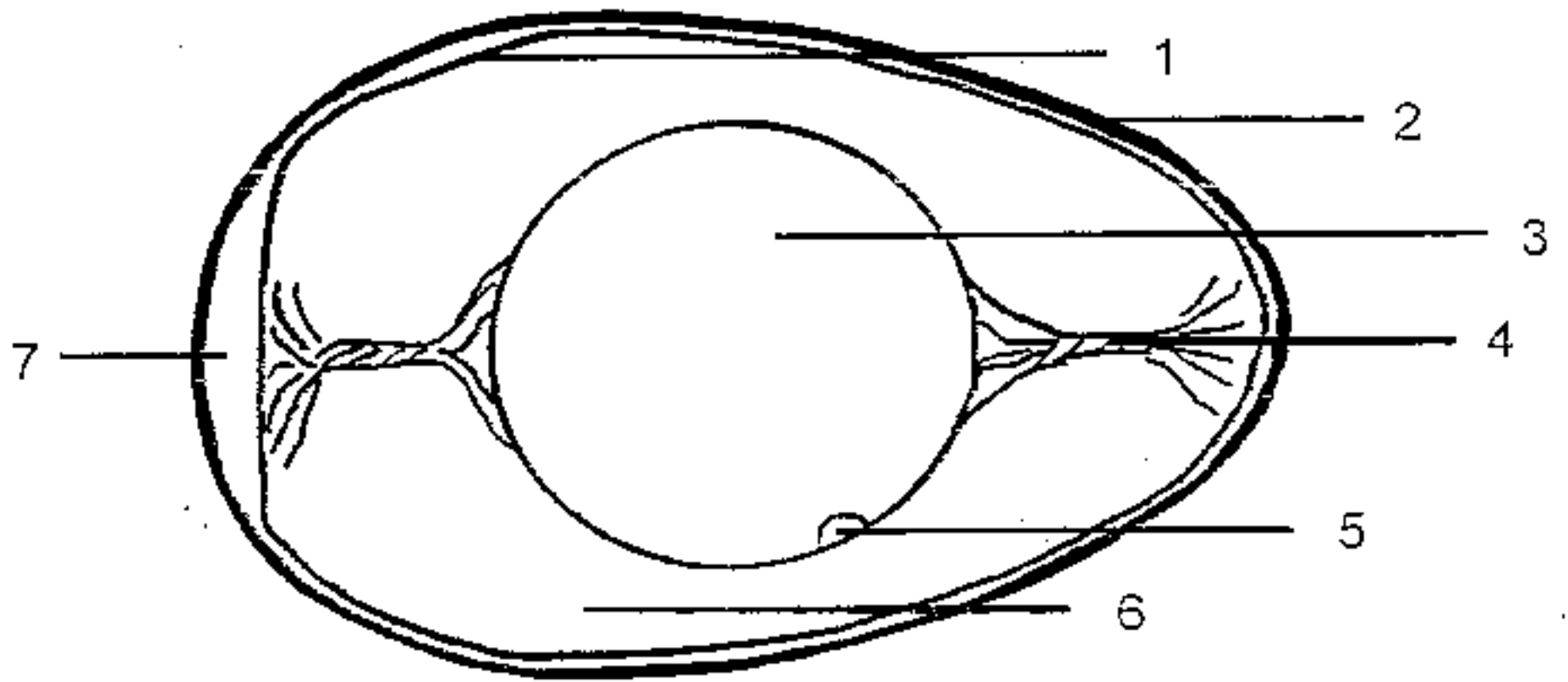








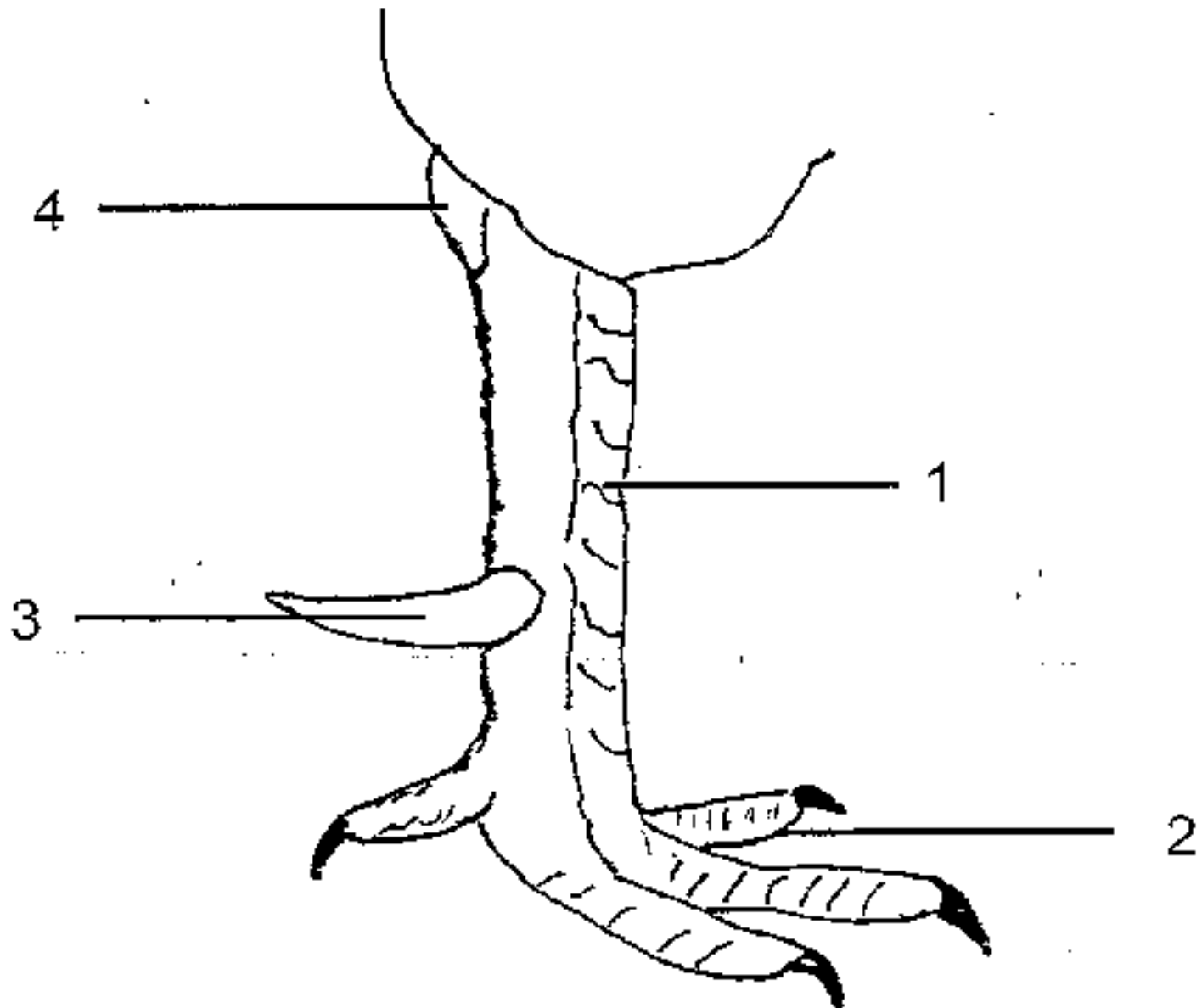
Parts of an Egg



1 _____
2 _____
3 _____
4 _____

5 _____
6 _____
7 _____

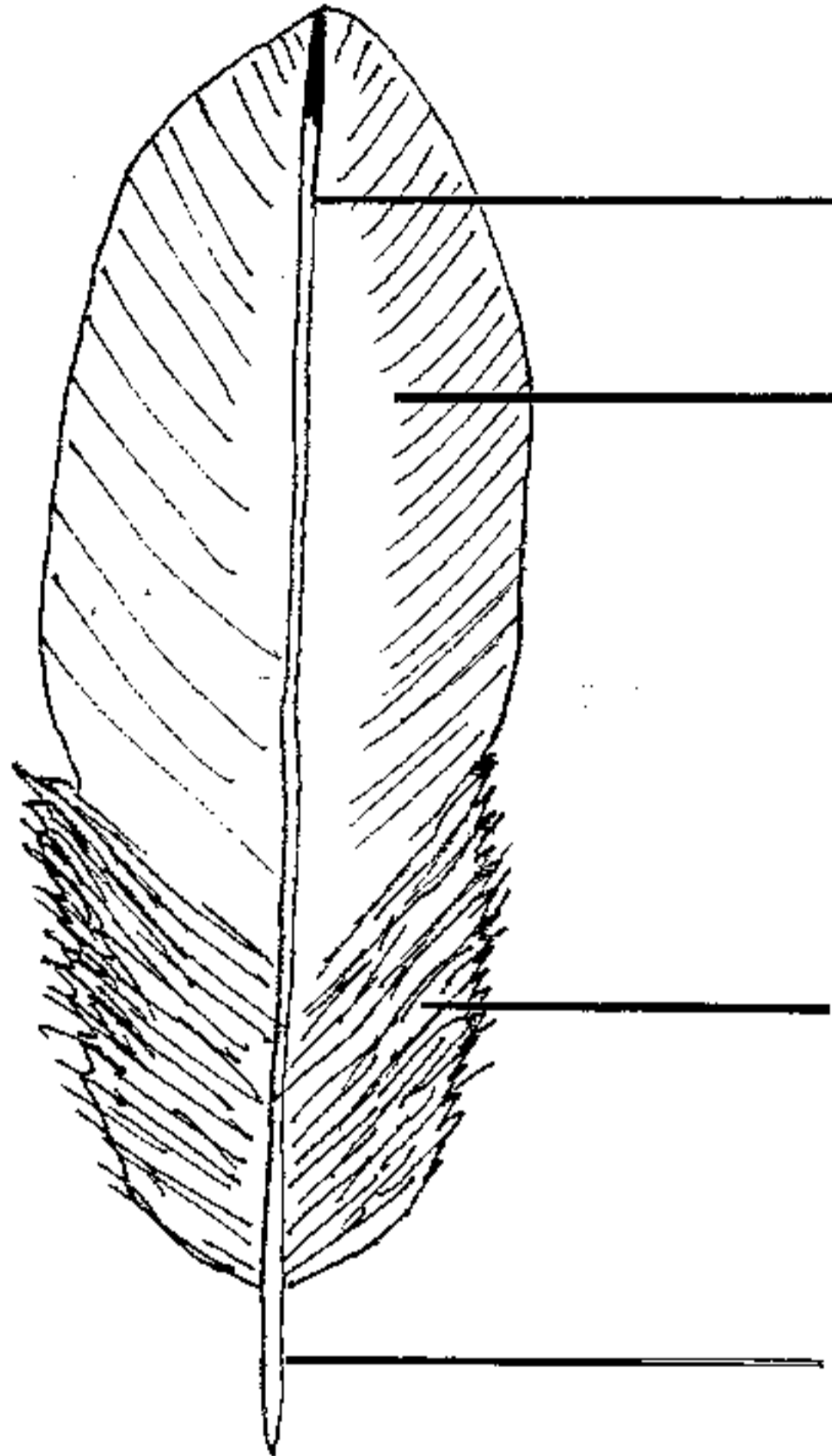
Parts of the Foot



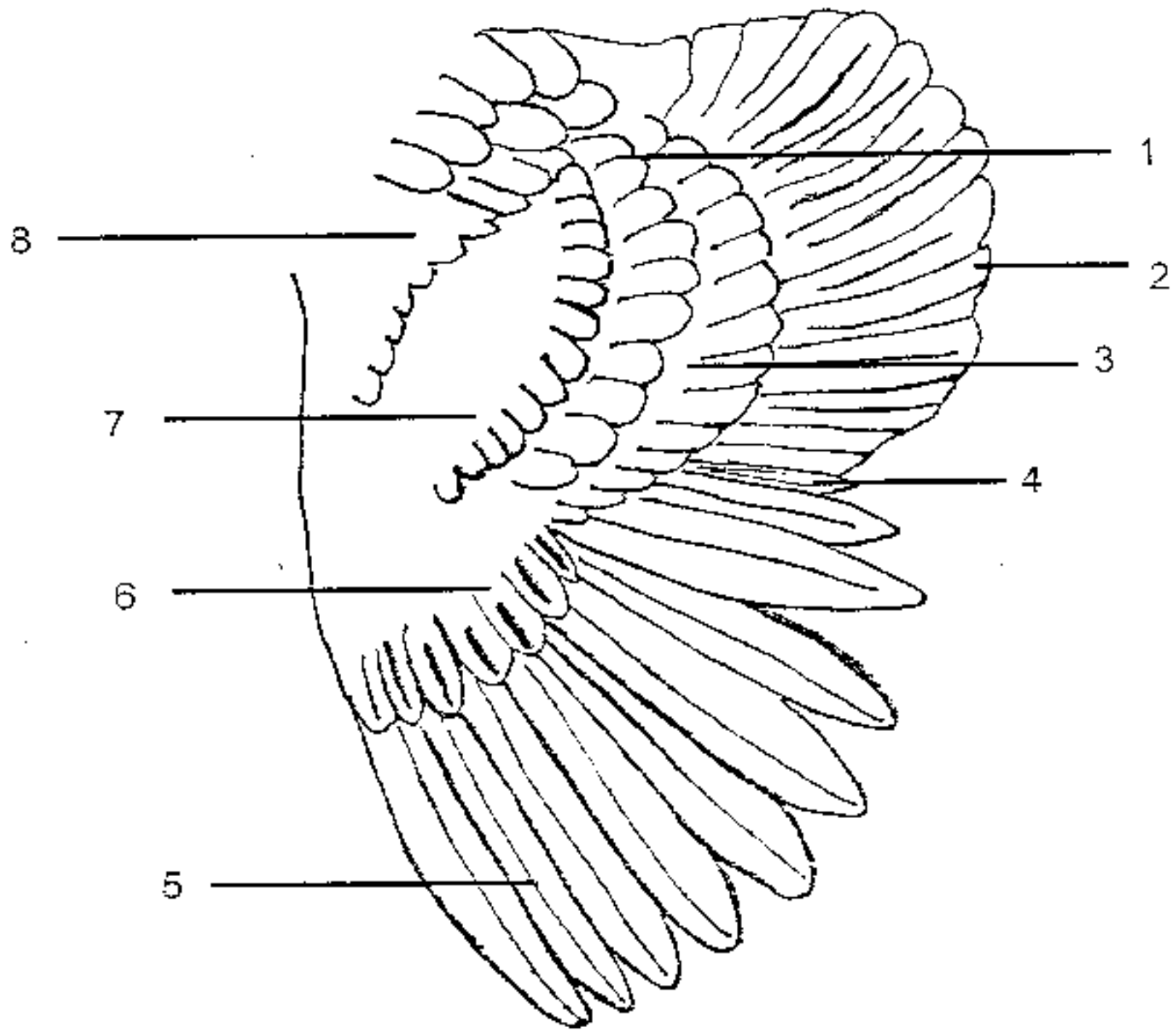
1 _____
2 _____

3 _____
4 _____

Parts of the Feather



Parts of the Wing



1 _____
2 _____
3 _____
4 _____

5 _____
6 _____
7 _____
8 _____

Score _____

Poultry Feed Identification

Levels 1, 2 & 3

Put the number on the Feed by the correct name.

Level 1 identify 4 items

Level 2 identify 8 items

Level 3 identify 10 items

_____ Oyster Shell

_____ Oats

_____ Grit

_____ Scratch

_____ Game Bird Mix

_____ Laying Pellets

_____ Cracked Corn

_____ Chick Mash

_____ Whole Corn

_____ Laying Crumbles

Poultry Level
1 & 2 '08