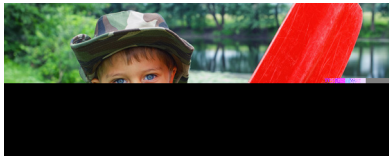


# YOUTH PROGRAMS AND CAMPS DURING THE COVID-19 PANDEMIC



The purpose of this tool is to assist directors or administrators in making (re)opening decisions regarding youth programs and camps during the COVID-19 pandemic. It is important to check with state and local health officials and other partners to determine the most appropriate actions while adjusting to meet the unique needs and circumstances of the local community.

## Should you consider opening?

- ✓ Will reopening be consistent with applicable state and local orders?
- ✓ Are you ready to protect children and employees at **higher risk** for severe illness?
- ✓ Are you able to screen children and employees upon arrival for symptoms and history of exposure?

**ANY NO**



**ALL YES**



## Are recommended health and safety actions in place?

- ✓ Promote [healthy hygiene practices](#) such as [hand washing](#) and [employees wearing a cloth face covering](#), as feasible
- ✓ Intensify [cleaning, disinfection](#), and ventilation of facilities and transport vehicles/buses
- ✓ Encourage [social distancing](#) through increased spacing, small groups, and limited mixing between groups, and staggered scheduling, arrival, and drop off, if feasible
- ✓ Where feasible, adjust activities and procedures to limit sharing of items such as toys, belongings, supplies, and equipment
- ✓ Train all employees on health and safety protocols

**ANY NO**



**ALL YES**



## Is ongoing monitoring in place?

- ✓ Develop and implement procedures to check for [signs and symptoms](#) in children and employees daily upon arrival, as feasible
- ✓ If feasible, implement enhanced screening for children and employees who have recently been present in areas of high transmission, including temperature checks and symptom monitoring
- ✓ Encourage anyone who is sick to [stay home](#)
- ✓ Plan for if children or employees get sick
- ✓ Regularly communicate and monitor developments with local authorities, employees, and families regarding cases, exposures, and updates to policies and procedures
- ✓ Monitor child and employee absences and have a pool of trained substitutes, and flexible leave policies and practices
- ✓ Be ready to consult with the local health authorities if there are cases in the facility or an increase in cases in the local area

**ANY NO**



**ALL YES**

