



Plumas Natl Forest: Proposed Meadow Enhancement Projects and Funding Opportunities

Joe Hoffman
Watershed Program
Manager, Plumas NF
February 2011

Plumas NF Watershed Improvement Program

1. Fuel Reduction and Prevention of High-Intensity Wildfire
2. Reducing Water Quality Impacts from Forest Roads
3. Stream and Meadow Restoration



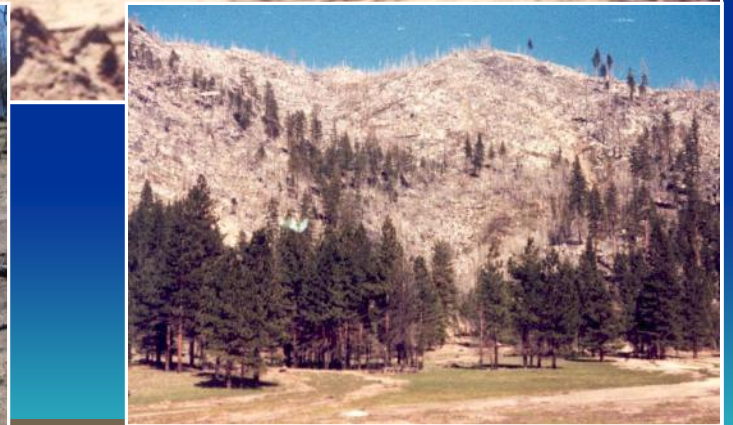
Prevention of High-Intensity Wildfire

Clarks Fire of 1987

- “ 1990 thunderstorm of 5+in one hour
- “ Soil loss of 50 . 600 tons / acre
- “ 200,000 tons of sediment to streams



Moonlight
Fire, June
2008



Reduce Water Quality Impacts from Roads

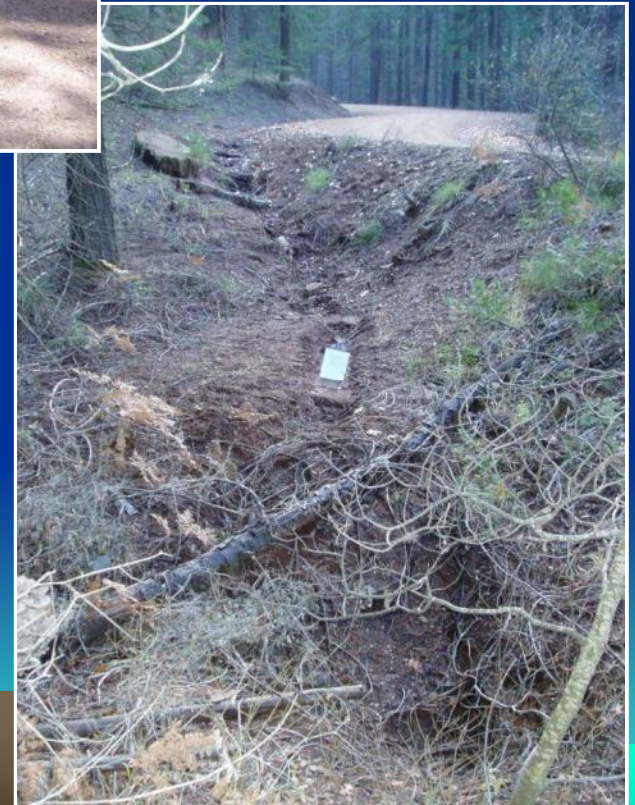
Treat road segments that are hydrologically connected to streams



Surface erosion



Erosion
caused by
culvert
overflow



Ditch Erosion

Plumas NF stream stabilization projects



Plumas NF Meadow Restoration Projects



- “ Reduced channel erosion
- “ Improved stream temperature
- “ Buffering of upland sediment
- “ Improved forage

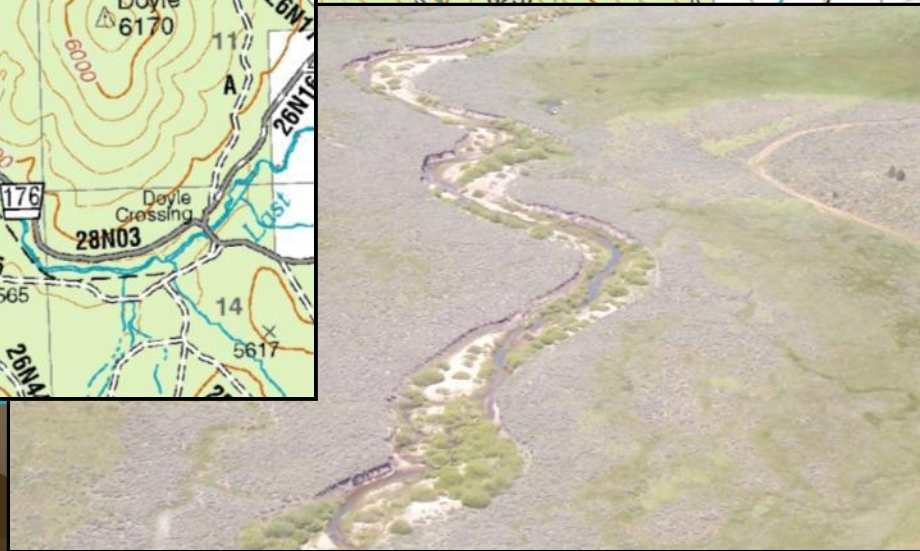
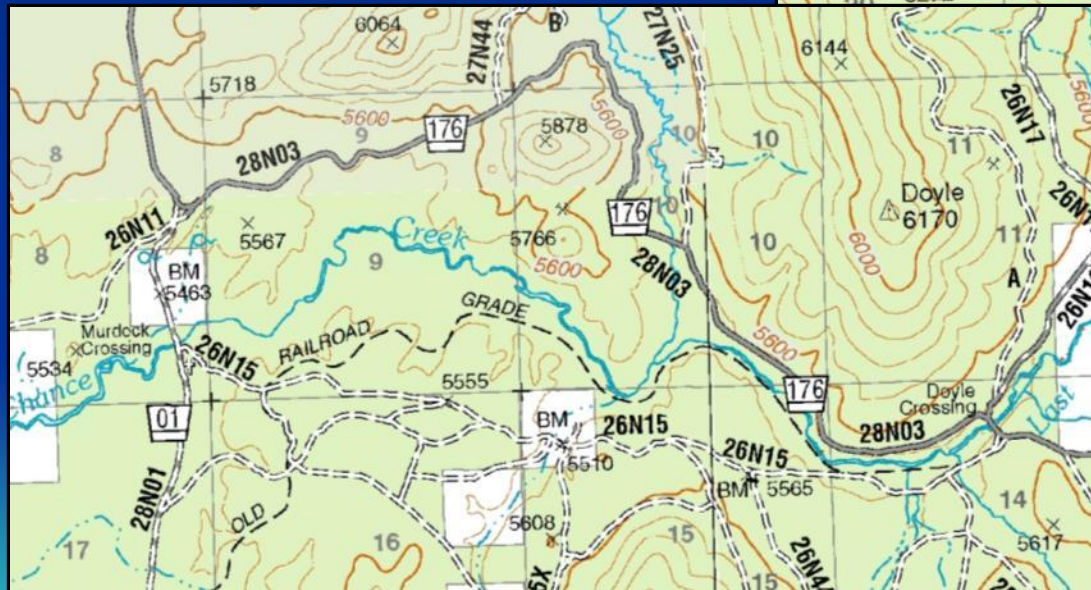
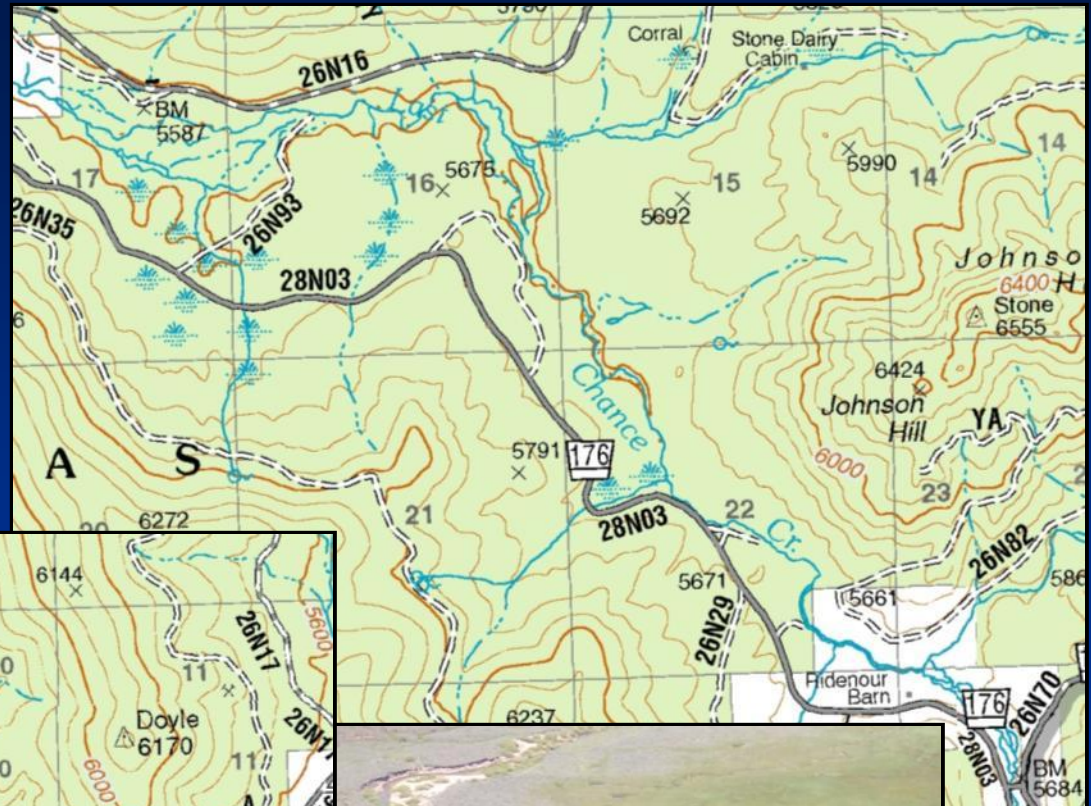
- “ Retention of winter / spring runoff
- “ Improved aquatic habitat, bird habitat, terrestrial habitat

US Secretary of Agriculture's vision (August 14, 2009):

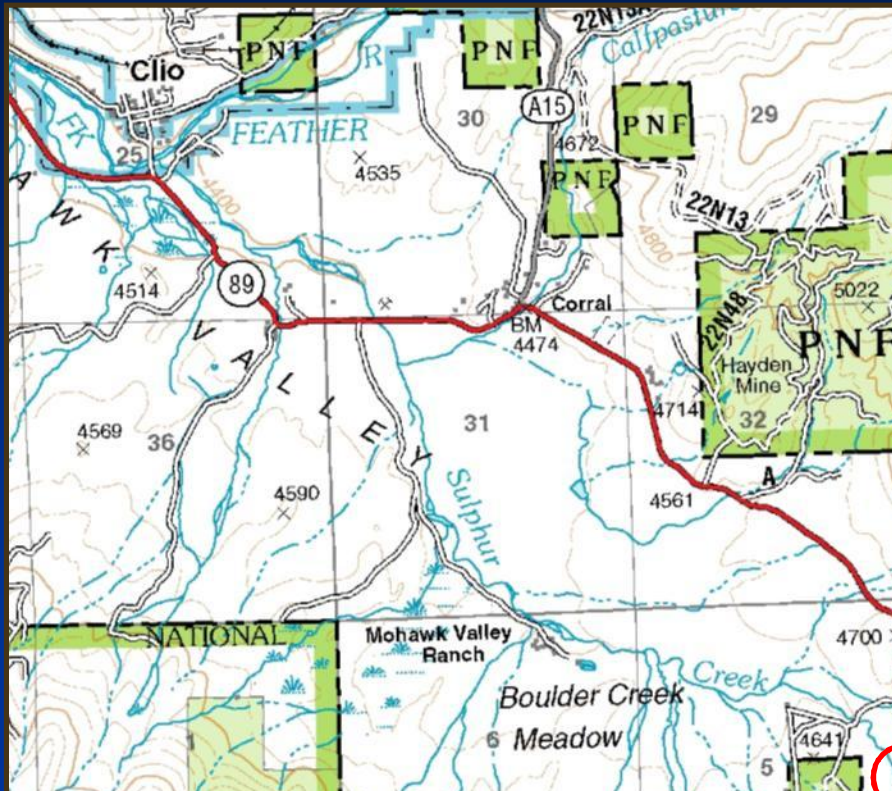
***“Our nation's forestlands, both public and private, are environmental and economic assets that are in critical need of restoration and conservation”
(including protection of water resources)***

Proposed meadow project: Last Chance Cr II

- “ Roughly 500 acres
- “ All on Plumas NF
- “ Continuation of upstream work (roughly 9 miles) completed 2003-2007
- “ Proposed Action for public review in spring 2011



PNF proposed meadow project: Sulfur - Barry



- " Roughly 15 acres
- " High priority project identified in 2004 watershed analysis for Sulphur Cr
- " Design analysis continues in 2011
- " Proposed Action for public review likely in spring 2012

Proposed meadow project: Thompson Creek



- " Site of DWR Water Budget Study
- " In early phases of planning / design
- " Approximate construction: 2015
- " Roughly 25 acres

