



Redding Area Groundwater Basin

Presented by:

Charleen Beard, Shasta County Department of Public Works

cbeard@shastacounty.gov

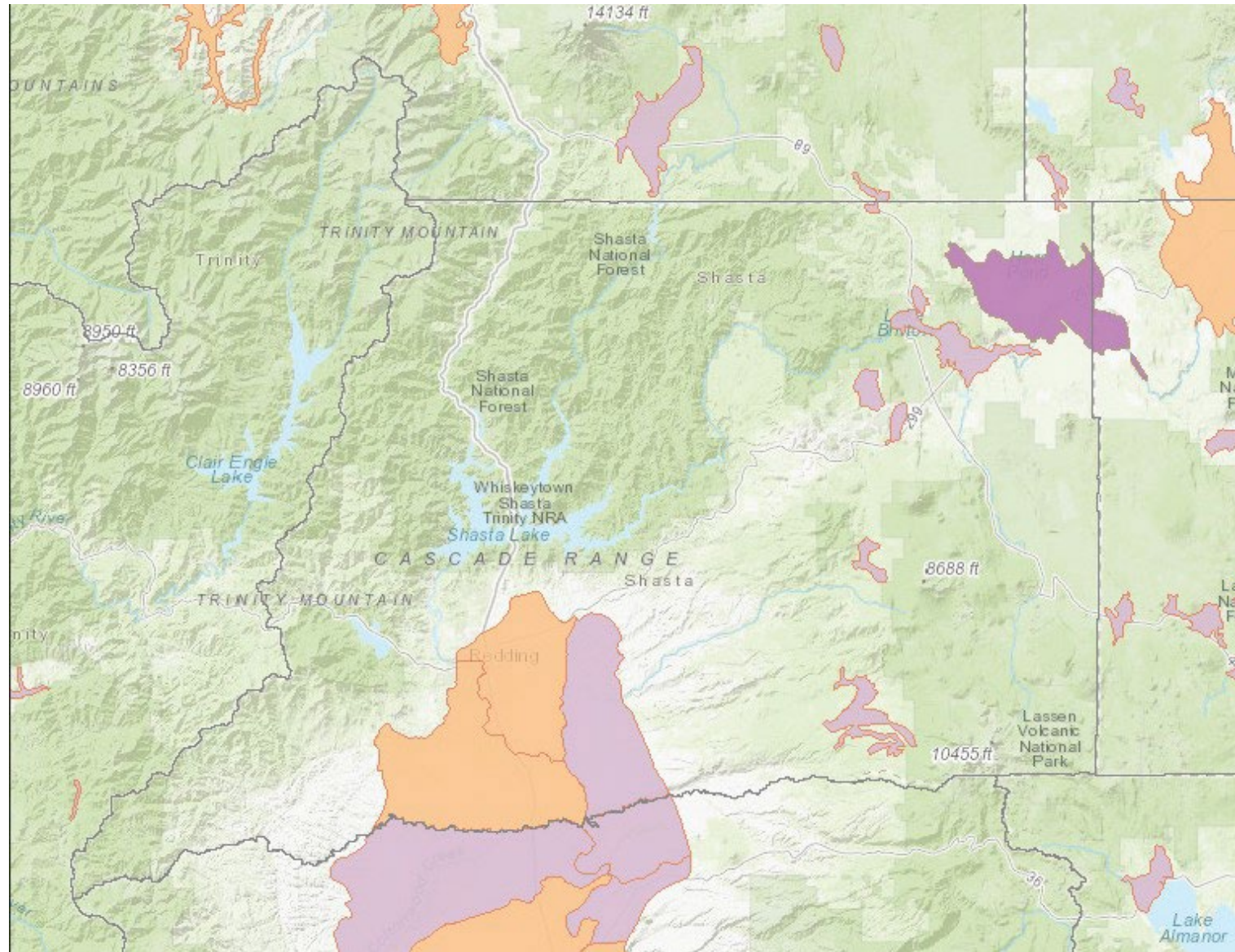
Shasta County Groundwater Overview:

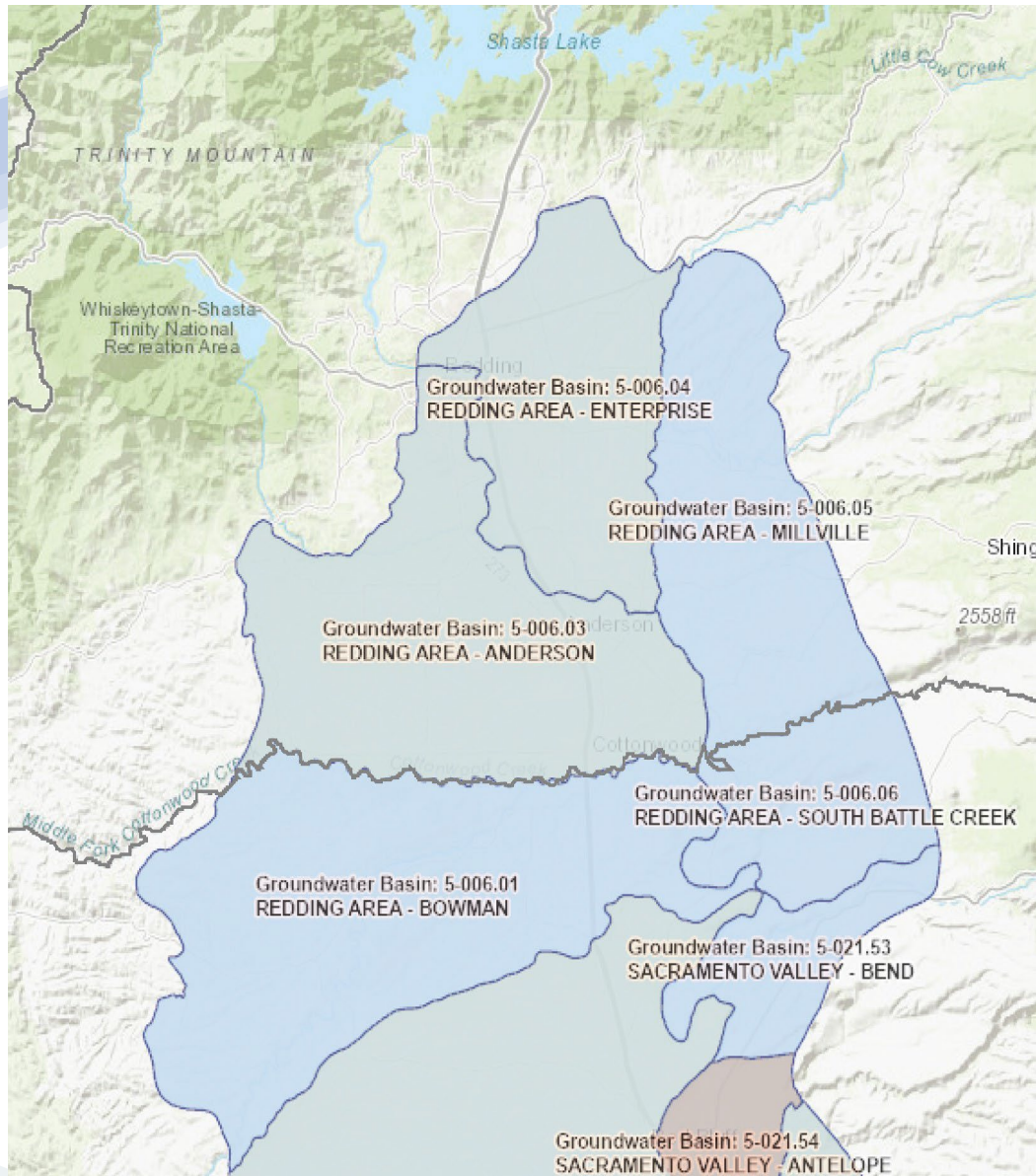
12 Alluvium groundwater
basins

2 medium priority
1 low priority
9 very low priority

Less is known about the
fractured rock aquifers.

Map created with SGMA Data
Viewer





Redding Area Groundwater Basin

5 subbasins

2 Medium priority

3 Very low priority

3 in Shasta County

Anderson

Enterprise

Millville

2 in Tehama County

Bowman

South Battle Creek

The Enterprise Anderson Groundwater Sustainability Agency (EAGSA) manages both medium priority basins in Shasta County.

The EAGSA Website is located at:

<https://eagsa-redding.hub.arcgis.com/>



Seasonal Groundwater Level Changes (1, 3, 5, 10-Years)

California's Groundwater Live



Select a Filter

County

Hydrologic Region

Filter Sub-Selection

All

Select a Season

- Spring: 2024
- Fall: 2023

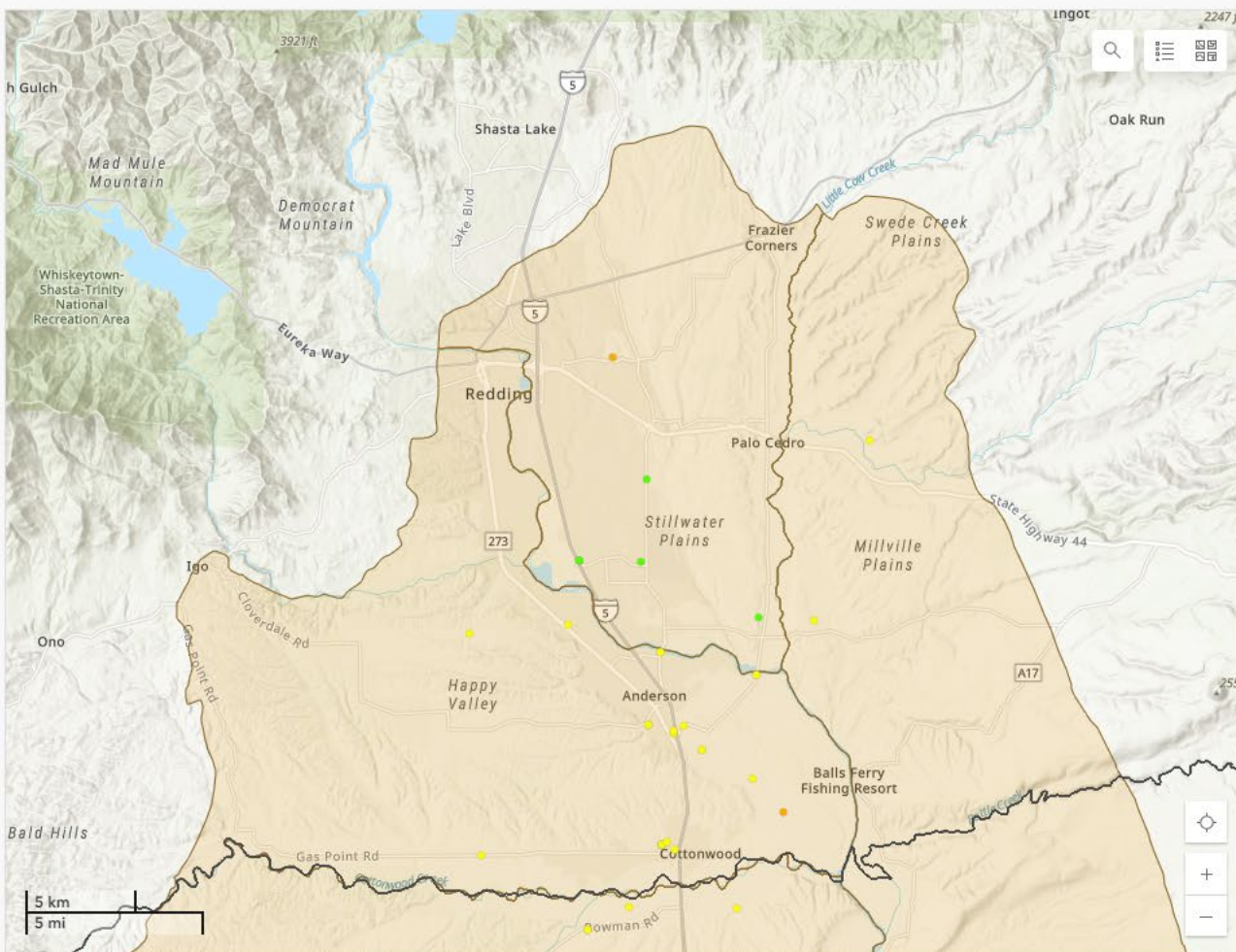
Select Number of Years

- 1
- 3
- 5
- 10

Filter by Well Depth

No filter (includes null depths)

Set to minimum Set to maximum

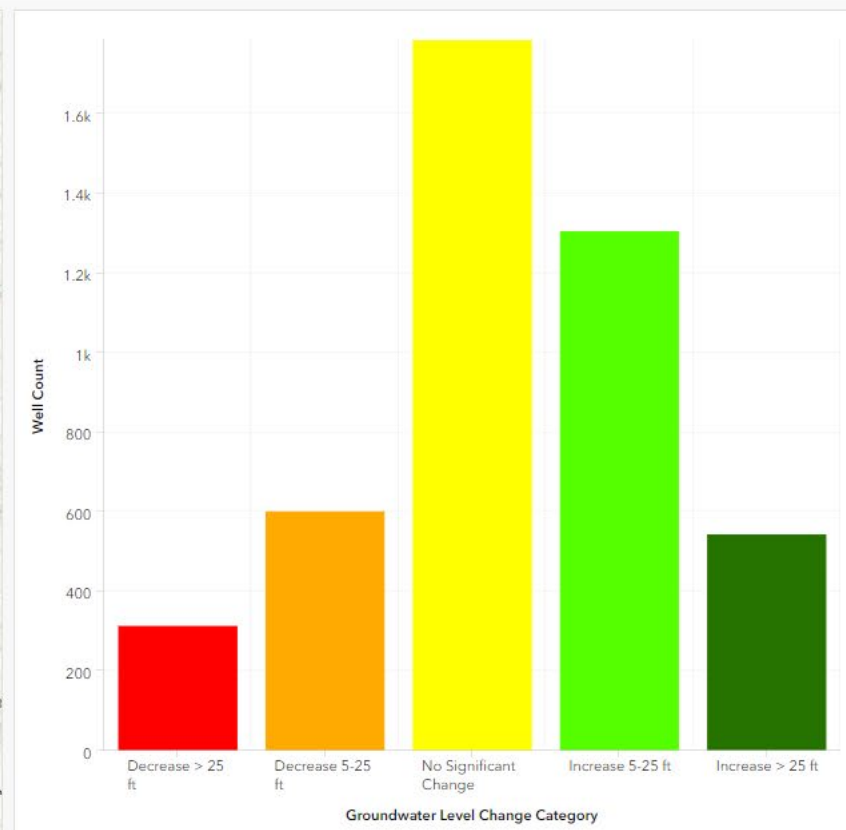


Esri, NASA, NGA, USGS | City of Redding GIS, California State Parks, Esri, TomTom, Garmin, SafeGraph, METI/NASA, USGS, Bureau of Land Management, E... Powered by Esri

Click here to learn how to use this dashboard.

Click here to learn more about how this dashboard was created.

Please email us at calgw@water.ca.gov to connect with the California's Groundwater Live Project Team.



Monitoring Wells

7.7k

Total

Monitoring Wells

4.5k

Based on Selection

One way to tell if a Groundwater Sustainability Plan is working, is to look at the way groundwater levels change.

<https://sgma.water.ca.gov/CalGWLIVE/>

Select a Filter

- County
- Groundwater Basin
- Hydrologic Region

Filter Sub-Selection

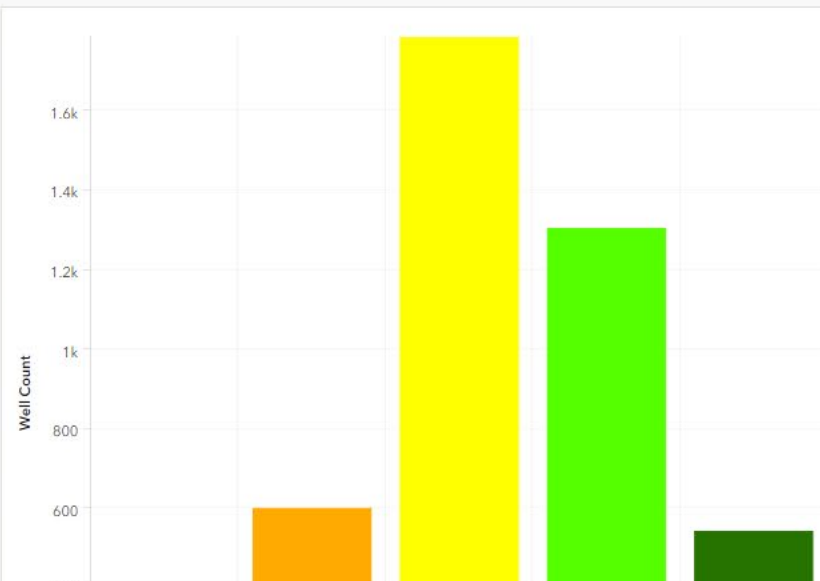
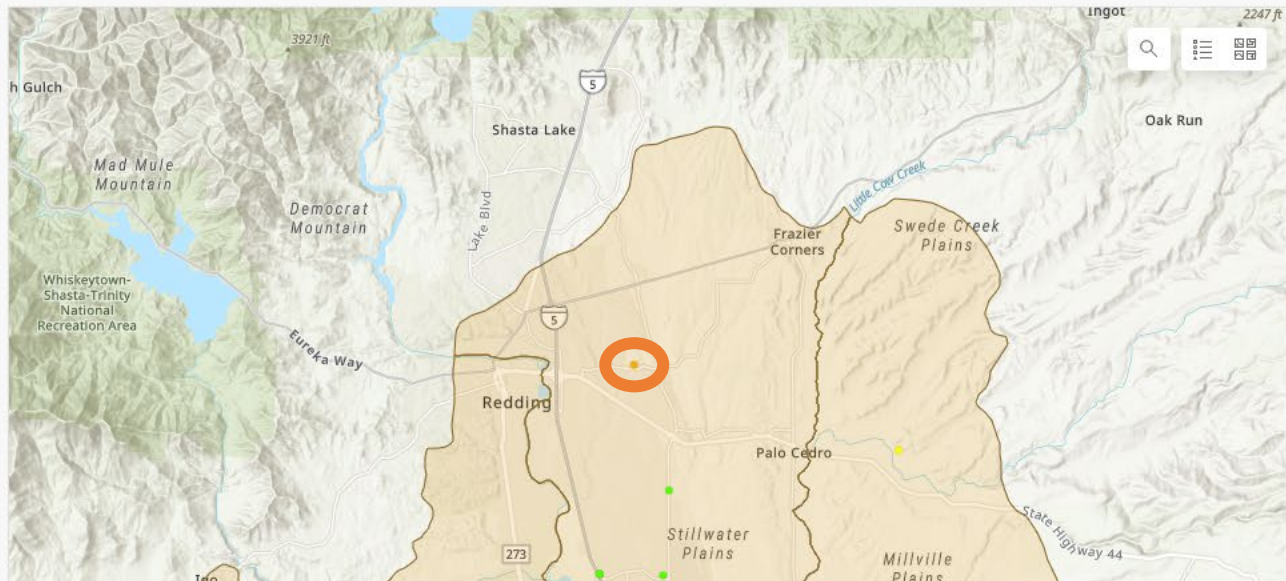
All

Select a Season

- Spring: 2024
- Fall: 2023

Select Number of Years

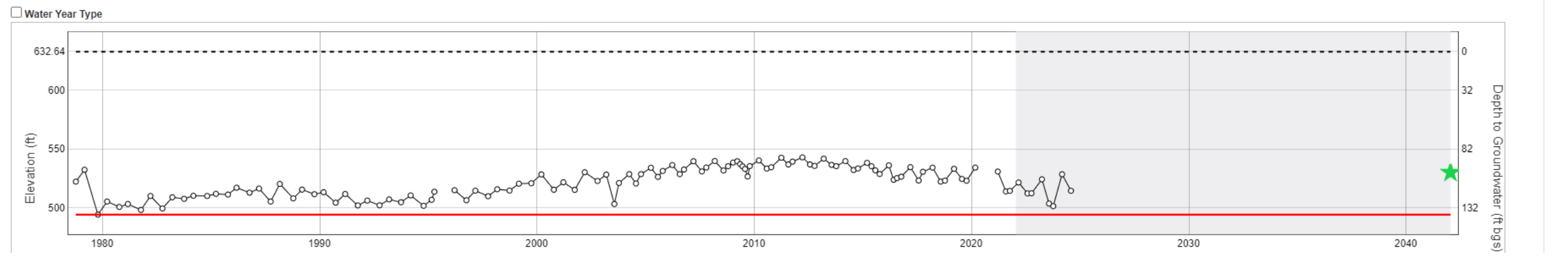
1



Site Code: 405892N1223206W001 State Well Number: 32N04W33G001M Local Well Name: 32N04W33G001M

Well Completion Report

Groundwater Elevation



Groundwater level information from the orange well in the Enterprise Basin.

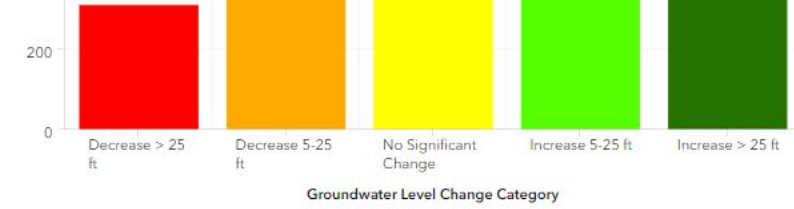
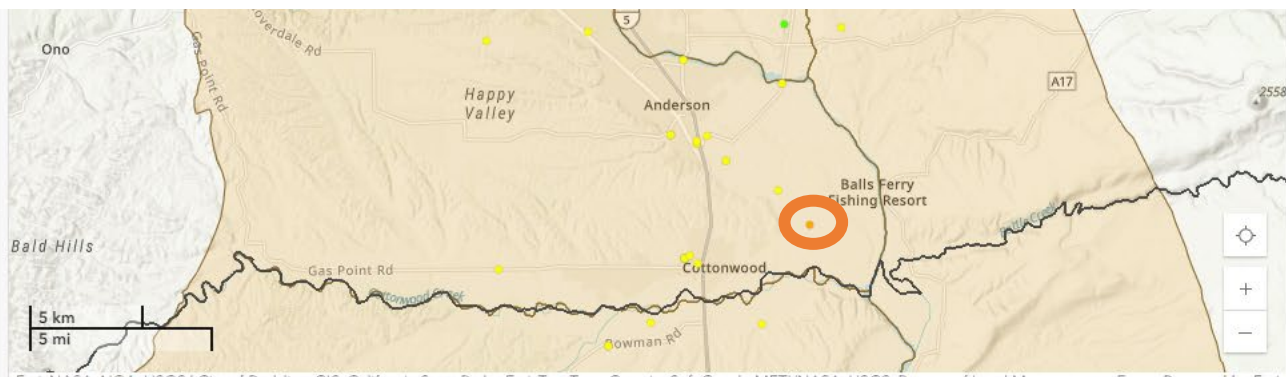
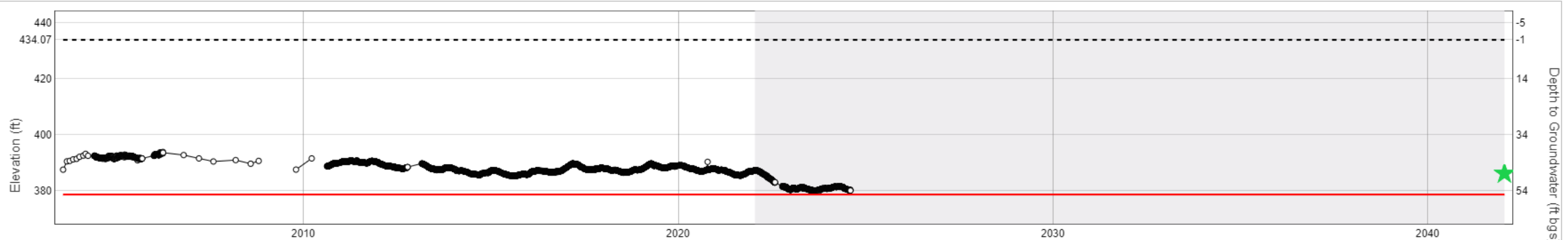
Select a Filter



Site Code: 404061N1222301W001 State Well Number: 30N03W32P003M Local Well Name: MW-06

Groundwater Elevation

Water Year Type



Reset

Filter by Well Depth
No filter (includes null depths)

Set to minimum Set to maximum

Reset Clear

Esri, NASA, NGA, USGS | City of Redding GIS, California State Parks, Esri, TomTom, Garmin, SafeGraph, METI/NASA, USGS, Bureau of Land Management, E... Powered by Esri

[Click here to learn how to use this dashboard.](#)
[Click here to learn more about how this dashboard was created.](#)
Please email us at calgw@water.ca.gov to connect with the California's Groundwater Live Project Team.

Monitoring Wells
7.7k
Total

Monitoring Wells
4.5k
Based on Selection

Groundwater level information from the orange well in the Anderson Basin.

Water Quality

No groundwater quality minimum thresholds were exceeded in water year 2023 in the Enterprise subbasin.

One groundwater quality minimum threshold was exceeded in the Anderson subbasin when a well tested high for iron; however, undesirable results are not present.



EAGSA

Managing groundwater sustainably for generations to come.

- EAGSA consists of 6 member agencies governed by a MOU.
 - Anderson Cottonwood Irrigation District
 - Bella Vista Water District
 - City of Anderson
 - City of Redding
 - Clear Creek Community Services District
 - Shasta County
- Submitted and received approval on both Groundwater Sustainability Plans.
- Submit annual reports in compliance with State law.
- Diligently pursues all grant opportunities, most recently receiving 1.4 million dollars for GSA management activities, groundwater model updates, and addressing data gaps.

You are cordially invited to the next Enterprise Anderson Groundwater Sustainability Agency Board meeting on September 18th at 2:00 pm at the City of Anderson Council Chambers.

To be added to the interested parties list please email me at cbeard@shastacounty.gov

Conclusion:

- The Enterprise and Anderson Subbasins of the Redding Area Groundwater Basin are Sustainable.
- Any questions?