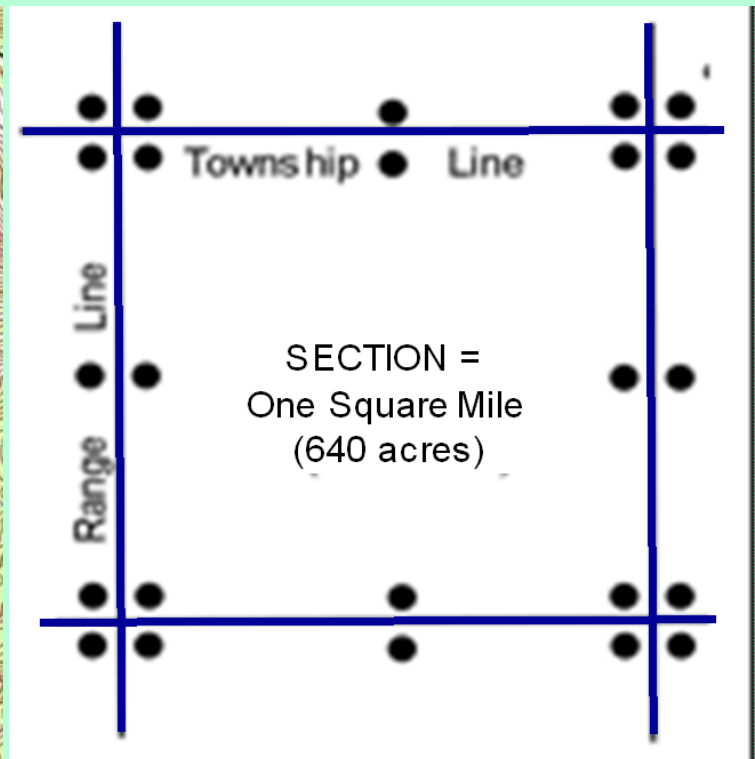
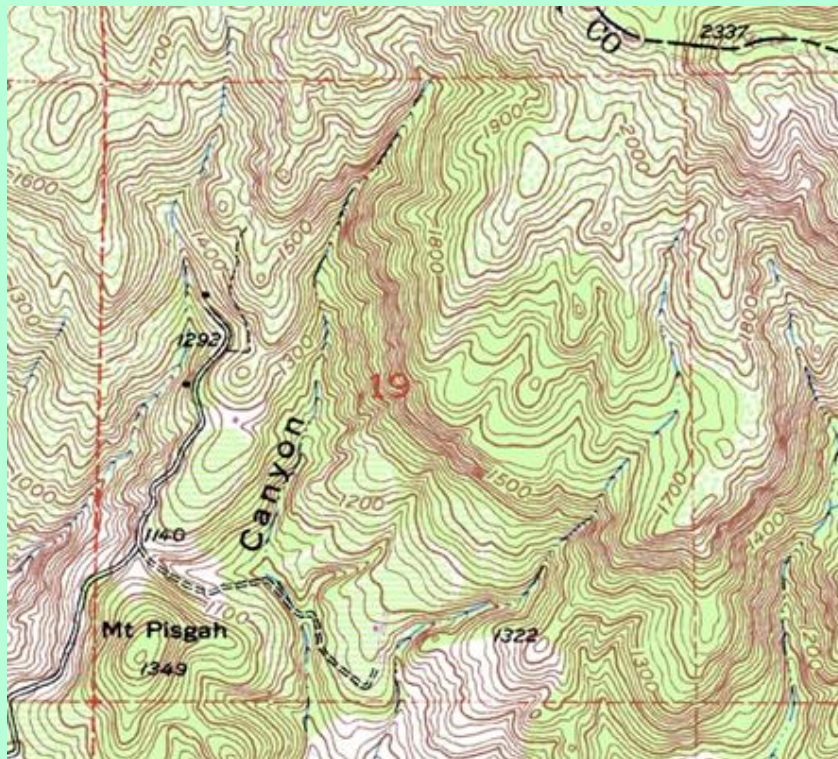


General Land Office “surveys are unexcelled as a source of baseline information . . . Survey records have contributed significantly to our understanding of North America’s pre-settlement ecosystems and the processes that maintained them. They have figured prominently in the restoration of a number of historic ecosystems.”

—Gordon G. Whitney & Joseph P. DeCant
The Historical Ecology Handbook



Field Notes of the Subdivision Lines of
Township 9 North Range 8 West Mount Diablo Meridian
Wm. Minto, Deputy Surveyor
June 2 – June 7, 1873

North between Secs. 15 & 16

CHAIN = 66 feet (1/80 mile)
LINK = 7.92 inches (100/chain)

26.50 Deep ravine course S.W.
40.00 Set post on high ridge for ¼ section corner
Black Oak 24 in. dia. bears N. 55 W. 54 links
61.00 Ravine courses N.W.
74.30 Old road E. & W.
80.00 Set a post for cor. To Secs. 9, 10, 15 & 16
A **Black Oak** 14 in. dia. bears N. 42 E. 137 links
A **Fir** 5 in. dia. bears S. 22 W. 30 links
A **Madrona** 15 in. dia. bears S. 28 E 98 links

POINT OBSERVATIONS

Oak with some Madrona & Fir

LINE DESCRIPTION

North between 9 & 10 ...

“Descend to high, undulating, open ground.”

C.C. Tracy 1858

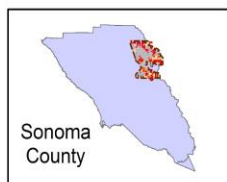
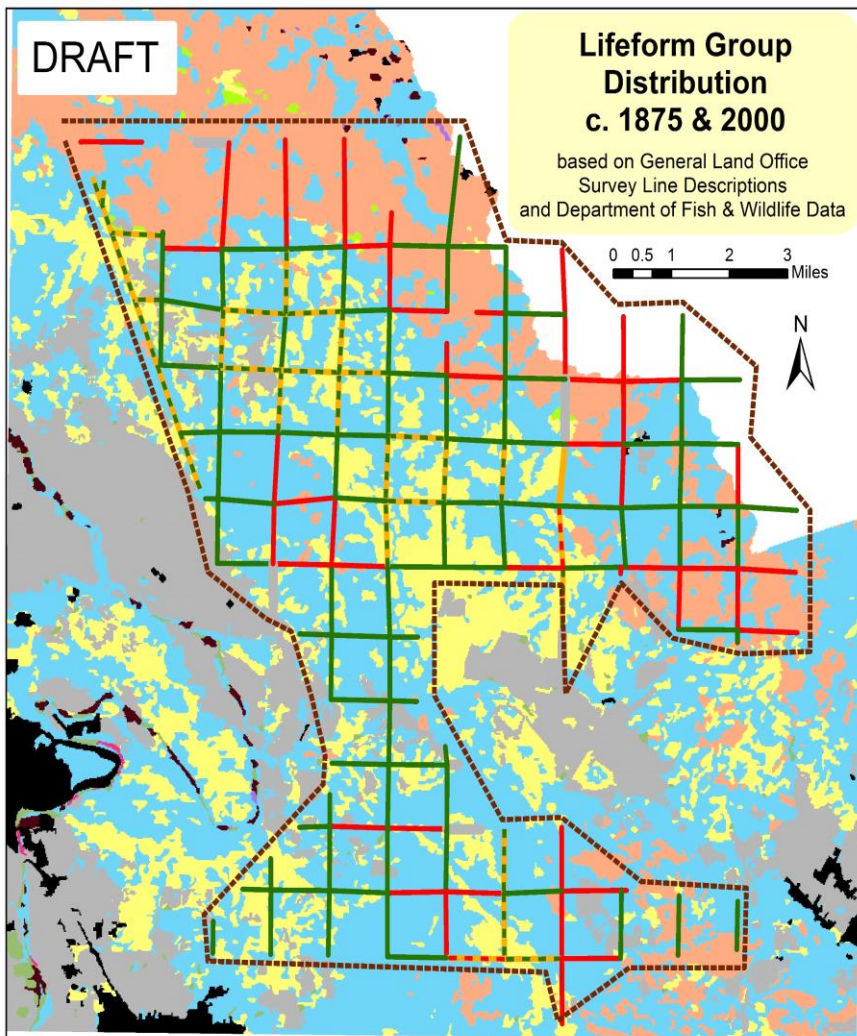


DRAFT

Lifeform Group Distribution c. 1875 & 2000

based on General Land Office
Survey Line Descriptions
and Department of Fish & Wildlife Data

0 0.5 1 2 3 Miles



Modern Distribution 2000



Historical Distribution c. 1875



DASHED = a mix of Lifeform Groups.
GRAY = insufficient data.

----- PROJECT AREA (approximate)

Modern Data derived from CA Dept. Fish & Wildlife WHR Data
Historical Research by Arthur Dawson, Baseline Consulting;
funded by the Sonoma County Agricultural Preservation & Open Space District

DRAFT

UPLAND SHRUB Lifeform Distribution c. 1875 & 2000

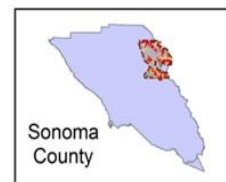
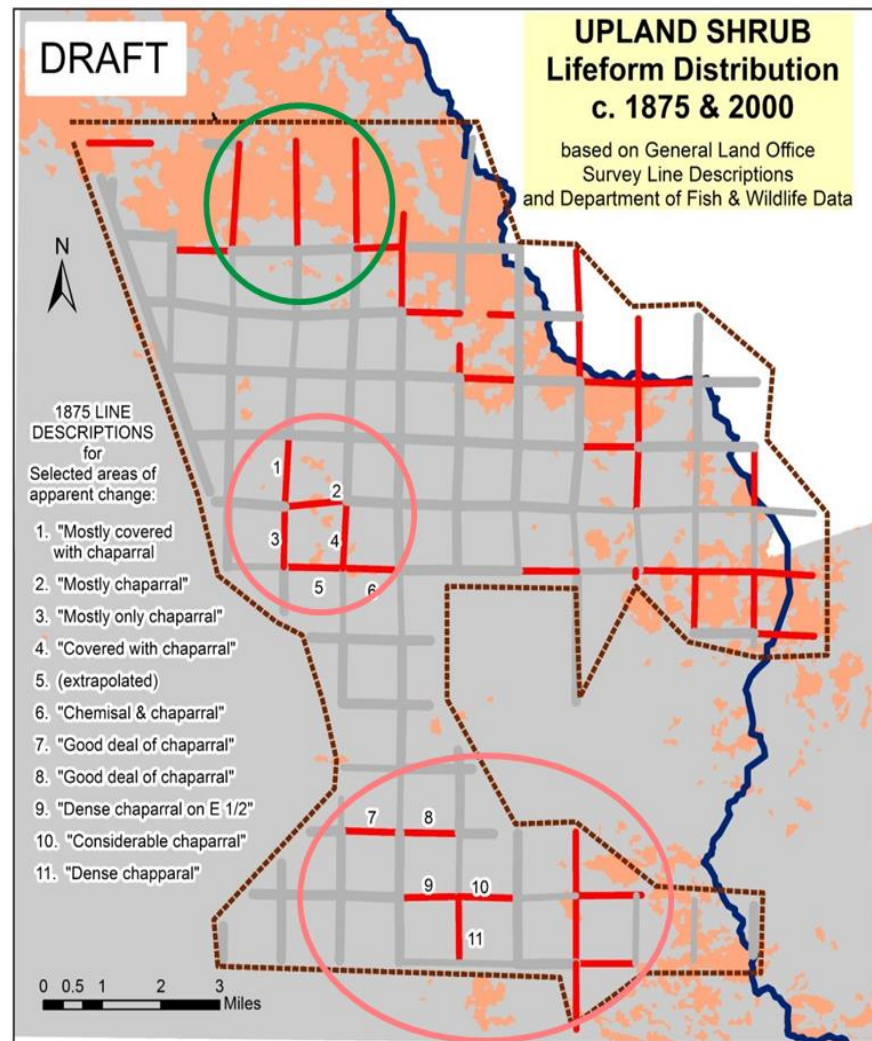
based on General Land Office
Survey Line Descriptions
and Department of Fish & Wildlife Data



1875 LINE
DESCRIPTIONS
for
Selected areas of
apparent change:

1. "Mostly covered with chaparral"
2. "Mostly chaparral"
3. "Mostly only chaparral"
4. "Covered with chaparral"
5. (extrapolated)
6. "Chemisal & chaparral"
7. "Good deal of chaparral"
8. "Good deal of chaparral"
9. "Dense chaparral on E 1/2"
10. "Considerable chaparral"
11. "Dense chapparral"

0 0.5 1 2 3 Miles



Modern Distribution 2000

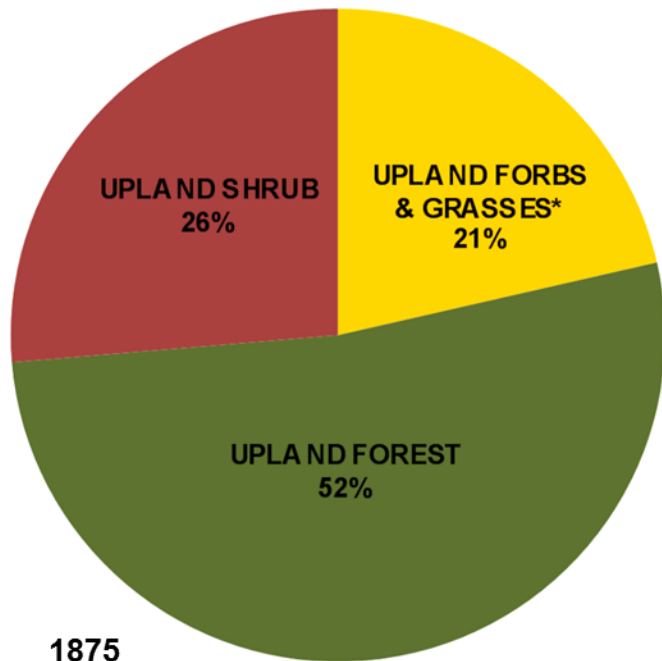


Historical Distribution c. 1875

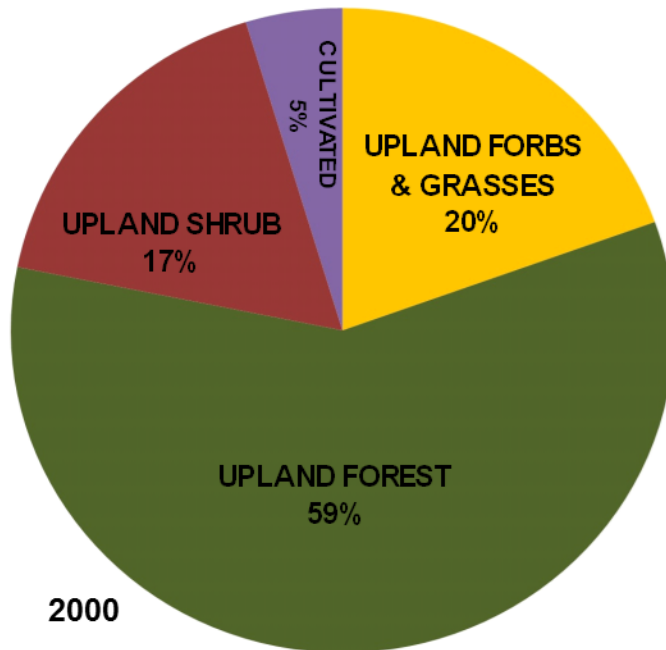


----- PROJECT AREA (approximate) COUNTY BOUNDARY

Modern Data derived from CA Dept. Fish & Wildlife WHR Data
Historical Research by Arthur Dawson, Baseline Consulting;
funded by the Sonoma County Agricultural Preservation & Open Space District



1875



2000

