

Table 9a. *Grevillea* 'Kings Celebration' average monthly quality ratings (scale 1-5, 5 = highest) at South Coast REC on 3 ETo-based irrigation levels in 2019.

Category	ET _o %	Apr	May	Jun	Jul	Aug	Sep	Oct	AVG
Overall Appearance	80	3.0	3.0	3.2	3.3	3.3	3.3	2.2	3.0
	50	3.0	3.1	3.1	3.1	3.1	3.1	1.9	2.9
	20	3.0	3.0	3.0	3.0	3.0	3.2	1.9	2.9
Foliage	80	3.0	3.0	3.2	3.2	3.2	3.0	2.2	3.0
	50	3.0	3.0	3.0	3.0	3.0	3.0	1.9	2.8
	20	3.0	3.0	3.0	3.0	3.0	3.0	1.8	2.8
Flower	80	3.7	3.2	3.3	3.3	2.8	2.5	1.0	2.8
	50	3.6	3.3	3.3	2.6	2.4	2.3	0.9	2.6
	20	3.0	2.8	3.2	3.2	2.3	2.3	0.8	2.5
Pest Resistance	80	5.0	5.0	5.0	5.0	5.0	5.0	5.0	5.0
	50	5.0	5.0	5.0	5.0	5.0	5.0	5.0	5.0
	20	5.0	5.0	5.0	5.0	5.0	5.0	5.0	5.0
Disease Resistance	80	5.0	5.0	5.0	5.0	5.0	5.0	5.0	5.0
	50	5.0	5.0	5.0	5.0	5.0	5.0	5.0	5.0
	20	5.0	5.0	5.0	5.0	5.0	5.0	5.0	5.0
Vigor	80	4.0	4.0	4.2	4.2	3.7	3.5	2.8	3.8
	50	4.0	4.0	4.1	4.1	3.7	3.6	2.1	3.7
	20	4.0	3.8	4.0	4.0	3.7	3.5	2.8	3.7

Table 9b. Open House participant ratings (scale 1-5, 5 = highest) for *Grevillea* 'Kings Celebration' on 3 ETo-based irrigation levels in March, June, and September 2019 at South Coast REC.

	ET _o %	Spring			Summer			Fall		
		80	50	20	80	50	20	80	50	20
Overall Appearance	Max	5	5	5	5	5	5	5	5	5
	Mean	4.3	4.2	4.4	4.6	3.8	3.8	3.8	3.5	3.6
	Median	4	4	5	5	4	4	4	3	4
	Min	2	2	1	3	3	2	2	2	2
Foliage Quality	Max	5	5	5	5	5	5	5	5	5
	Mean	4.0	4.0	4.2	4.5	3.6	3.7	3.8	3.6	3.4
	Median	4	4	4	5	3	4	4	4	3
	Min	2	2	2	3	2	2	2	2	2
Floral Display	Max	5	5	5	5	5	5	5	5	5
	Mean	4.0	4.1	4.3	4.6	4.3	4.1	3.5	2.5	3.1
	Median	4	4	4	5	4	4	4	2	3
	Min	2	2	0	4	3	2	1	0	1

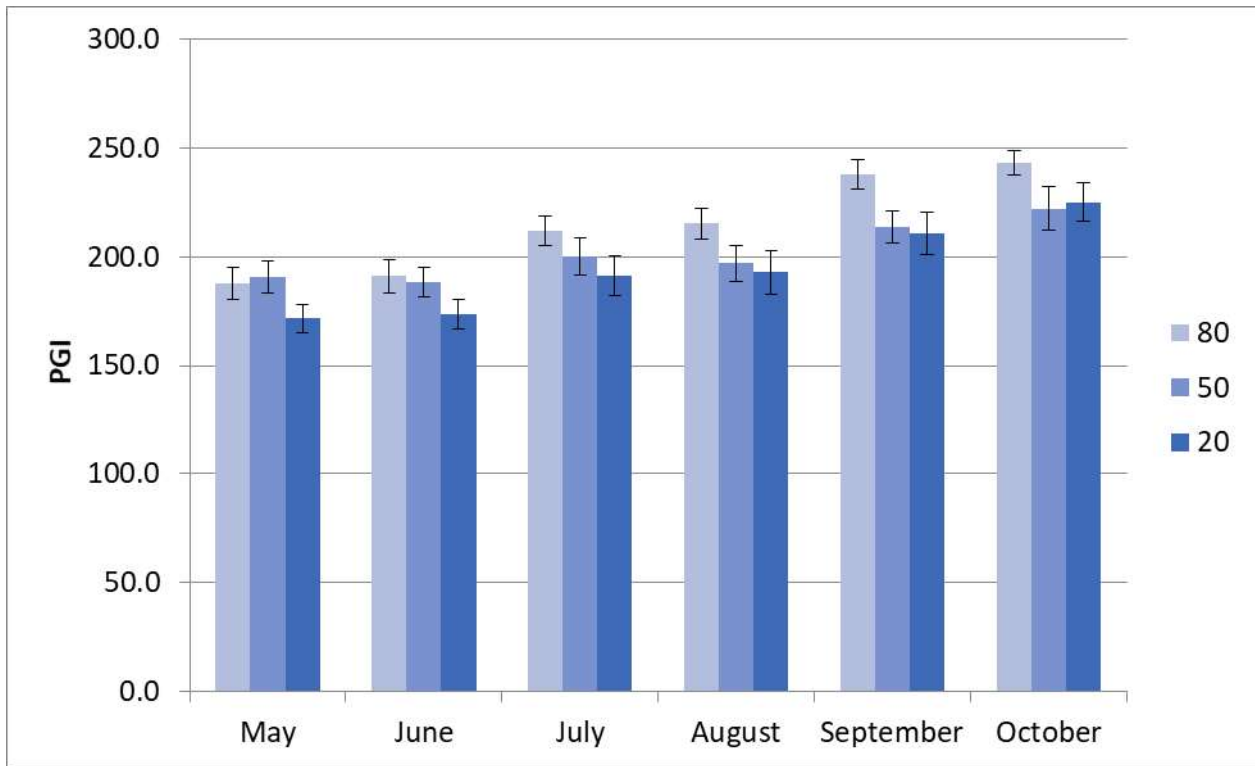


Figure 4a. *Grevillea* 'Kings Celebration' average monthly plant growth index (PGI) at South Coast REC on 3 ETo-based irrigation levels in 2019. Error bars represent ± 1 SE.

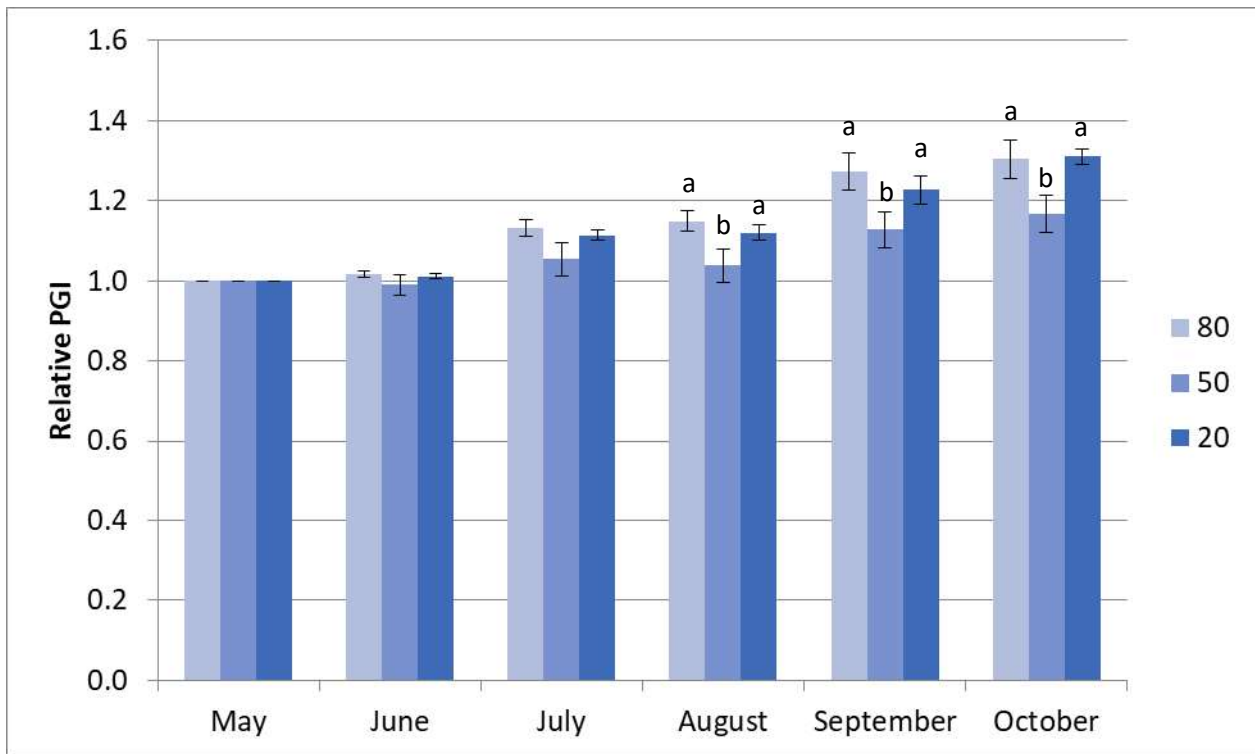


Figure 4b. *Grevillea* 'Kings Celebration' average monthly relative plant growth index (rPGI) at South Coast REC on 3 ETo-based irrigation levels in 2019. Error bars represent ± 1 SE. Bars with different letters represent significant difference using ANOVA and Tukey's Post-hoc at $p \leq 0.05$.