

Table 11a. *Lavandula × allardii* 'Meerlo' average monthly quality ratings (scale 1-5, 5 = highest) at UC Davis on 3 ETo-based irrigation levels in 2019.

Category	ET _o %	Apr	May	Jun	Jul	Aug	Sep	Oct	AVG
Overall Appearance	80	3.5	3.8	4.6	4.9	4.9	4.8	4.9	4.5
	50	3.7	4.0	4.6	5.0	5.0	5.0	5.0	4.6
	20	3.5	3.7	4.3	4.8	4.9	4.8	4.9	4.4
Foliage	80	3.6	4.4	4.9	5.0	5.0	5.0	5.0	4.7
	50	3.7	5.0	5.0	5.0	5.0	5.0	5.0	4.8
	20	3.7	4.5	4.8	5.0	5.0	5.0	5.0	4.7
Flower	80	0.0	0.0	0.0	0.0	0.0	0.0	0.0	0.0
	50	0.0	0.0	0.0	0.4	0.6	0.0	0.0	0.1
	20	0.0	0.0	0.2	0.2	0.0	0.0	0.0	0.0
Pest Resistance	80	5.0	5.0	5.0	5.0	5.0	5.0	5.0	5.0
	50	5.0	5.0	5.0	5.0	5.0	5.0	5.0	5.0
	20	5.0	5.0	5.0	5.0	5.0	5.0	5.0	5.0
Disease Resistance	80	5.0	5.0	5.0	5.0	5.0	5.0	5.0	5.0
	50	5.0	5.0	5.0	5.0	5.0	5.0	5.0	5.0
	20	5.0	5.0	5.0	5.0	5.0	5.0	5.0	5.0
Vigor	80	3.9	4.8	5.0	4.9	4.9	4.9	4.9	4.7
	50	4.3	5.0	5.0	4.9	5.0	5.0	5.0	4.9
	20	3.7	5.0	5.0	5.0	5.0	5.0	5.0	4.8

Table 11b. Open House participant ratings for *Lavandula × allardii* 'Meerlo' on 3 ETo-based irrigation levels in April, July, and September 2019 at UC Davis.

	ET _o %	Spring			Summer			Fall		
		80	50	20	80	50	20	80	50	20
Overall Appearance	Max	5	5	5	5	5	5	5	5	5
	Mean	4.2	3.8	4.2	4.6	4.5	4.5	4.5	4.5	4.4
	Median	4	4	4	5	5	5	5	5	5
	Min	1	1	3	3	2	3	2	2	2
Foliage Quality	Max	5	5	5	5	5	5	5	5	5
	Mean	4.4	4.0	4.5	4.9	4.9	4.8	4.6	4.7	4.6
	Median	5	4	5	5	5	5	5	5	5
	Min	2	1	3	4	4	3	3	3	2
Floral Display	Max	4	0	0	5	5	5	5	1	0
	Mean	0.1	0.0	0.0	0.3	0.6	0.2	0.1	0.0	0.0
	Median	0	0	0	0	0	0	0	0	0
	Min	0	0	0	0	0	0	0	0	0

Table 11c. *Lavandula × allardii* 'Meerlo' average monthly quality ratings (scale 1-5, 5 = highest) at South Coast REC on 3 ETo-based irrigation levels in 2019.

Category	ET _o %	Apr	May	Jun	Jul	Aug	Sep	Oct	AVG
Overall Appearance	80	3.6	3.9	3.8	3.8	3.8	3.6	4.5	3.8
	50	3.4	3.4	3.3	3.3	3.3	3.4	4.9	3.5
	20	3.3	3.6	3.6	3.6	3.6	3.4	4.5	3.6
Foliage	80	4.3	4.3	4.3	4.4	4.3	4.0	4.4	4.3
	50	3.9	4.0	3.9	4.0	4.0	4.1	4.9	4.1
	20	4.0	4.0	4.3	4.3	4.1	4.1	4.5	4.2
Flower	80	0.8	0.6	0.5	1.3	3.3	3.3	1.0	1.5
	50	0.6	0.6	0.1	1.1	2.6	3.0	1.1	1.3
	20	0.9	0.9	0.1	1.1	3.3	3.9	1.0	1.6
Pest Resistance	80	5.0	5.0	5.0	5.0	5.0	5.0	5.0	5.0
	50	5.0	5.0	5.0	5.0	5.0	4.9	5.0	5.0
	20	5.0	5.0	5.0	5.0	5.0	4.9	5.0	5.0
Disease Resistance	80	5.0	5.0	5.0	5.0	5.0	5.0	5.0	5.0
	50	5.0	5.0	5.0	5.0	5.0	5.0	5.0	5.0
	20	5.0	5.0	5.0	5.0	5.0	5.0	5.0	5.0
Vigor	80	3.9	4.0	4.3	4.3	4.3	4.0	5.0	4.2
	50	4.0	4.0	4.1	4.1	4.0	4.1	5.0	4.2
	20	3.9	3.9	4.3	4.3	4.1	3.9	5.0	4.2

Table 11d. Open House participant ratings (scale 1-5, 5 = highest) for *Lavandula × allardii* 'Meerlo' on 3 ETo-based irrigation levels in March, June, and September 2019 at South Coast REC.

	ET _o %	Spring			Summer			Fall		
		80	50	20	80	50	20	80	50	20
Overall Appearance	Max	5	5	5	5	5	5	5	5	5
	Mean	4.6	4.3	4.6	4.7	4.7	4.6	4.7	4.6	4.7
	Median	5	4	5	5	5	5	5	5	5
	Min	3	1	3	3	4	3	4	3	4
Foliage Quality	Max	5	5	5	5	5	5	5	5	5
	Mean	4.7	4.5	4.8	4.6	4.9	4.7	4.8	4.8	4.7
	Median	5	5	5	5	5	5	5	5	5
	Min	3	1	3	1	4	4	4	4	4
Floral Display	Max	0	5	0	1	1	1	5	5	5
	Mean	0.0	0.1	0.0	0.6	0.1	0.2	3.5	3.4	3.5
	Median	0	0	0	1	0	0	4	3	4
	Min	0	0	0	0	0	0	2	1	2

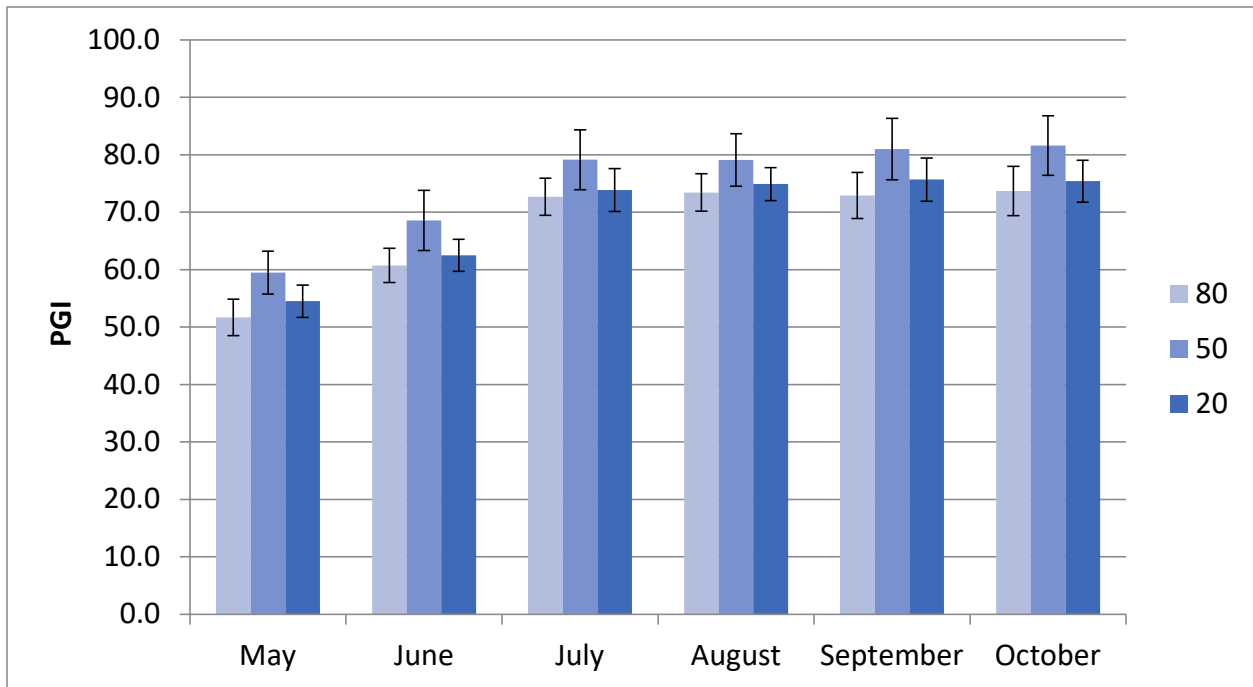


Figure 6a. *Lavandula x allardii* 'Meerlo' average monthly plant growth index (PGI) at UC Davis in on 3 ETo-based irrigation levels in 2019. Error bars represent ± 1 SE.

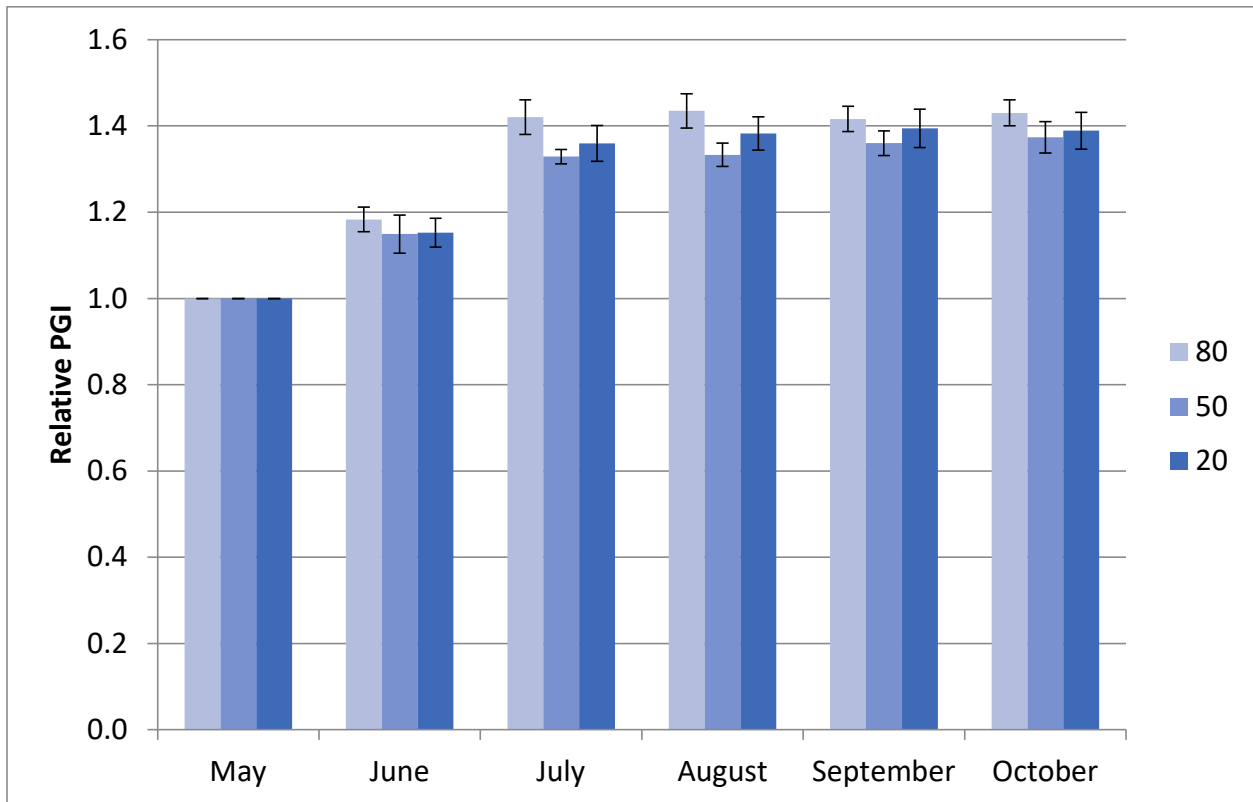


Figure 6b. *Lavandula x allardii* 'Meerlo' average monthly relative plant growth index (rPGI) at UC Davis in on 3 ETo-based irrigation levels in 2019. Error bars represent ± 1 SE.

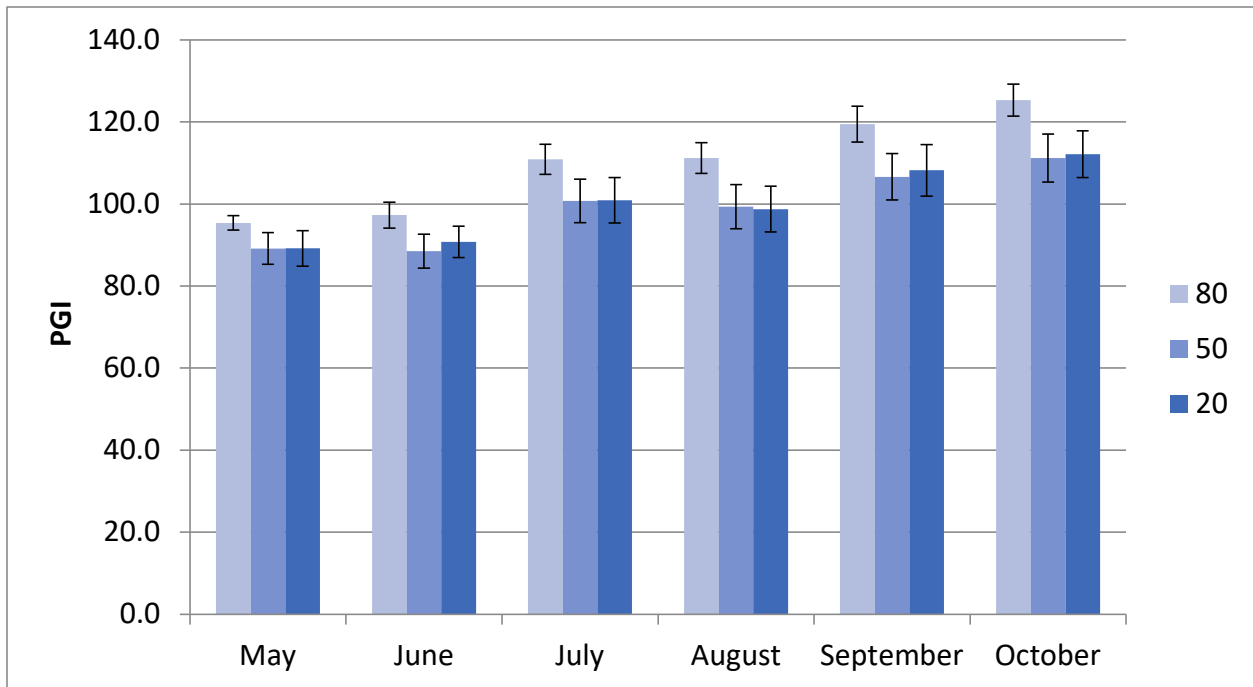


Figure 6c. *Lavandula x allardii* 'Meerlo' average monthly plant growth index (PGI) at South Coast REC on 3 ETo-based irrigation levels in 2019. Error bars represent ± 1 SE.

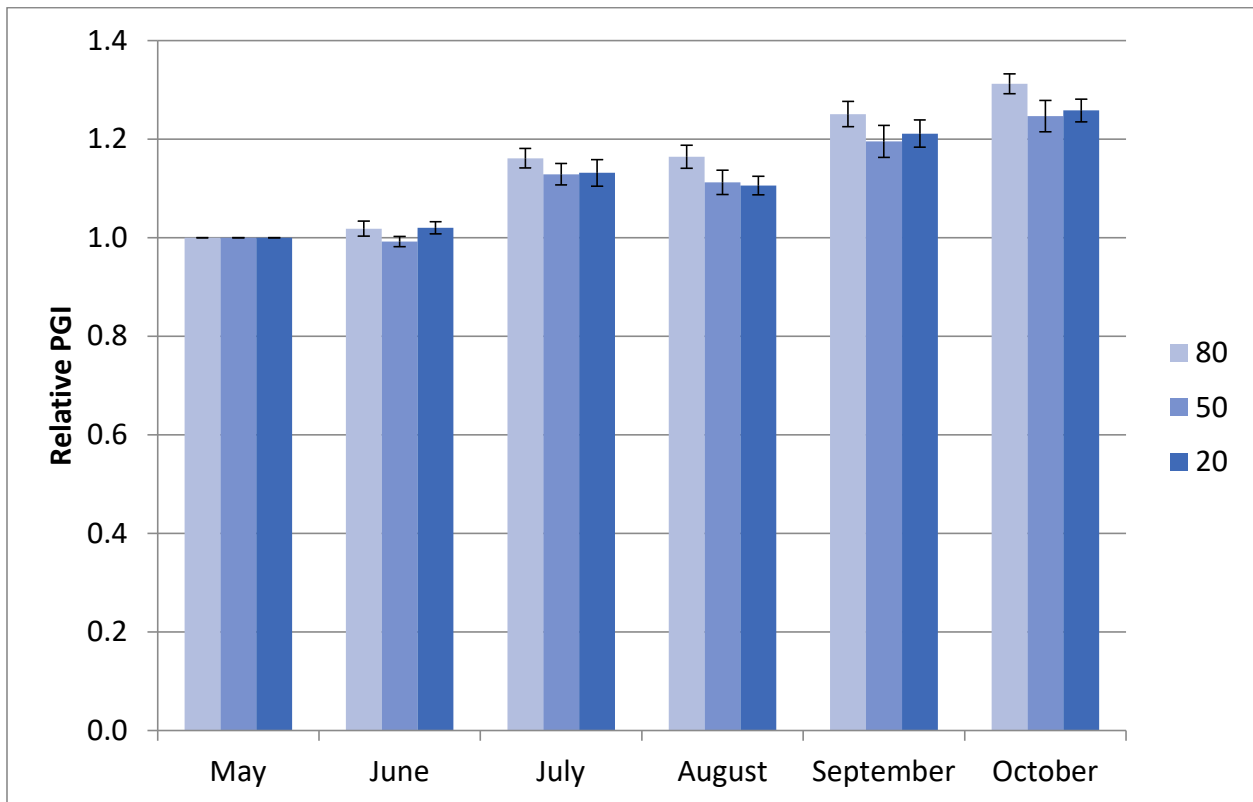


Figure 6d. *Lavandula x allardii* 'Meerlo' average monthly relative plant growth index (rPGI) at South Coast REC on 3 ETo-based irrigation levels in 2019. Error bars represent ± 1 SE.