

Table 14a. *Rhaphiolepis umbellata* 'RutRhaph1' Southern Moon® average monthly quality ratings (scale 1-5, 5 = highest) at UC Davis on 3 ETo-based irrigation levels in 2019. Ratings with different superscripts represent significant difference using ANOVA and Tukey's Post-hoc at $p \leq 0.05$ (in black) or ≤ 0.01 (in red).

Category	ET _o %	Apr	May	Jun	Jul	Aug	Sep	Oct	AVG
Overall Appearance	80	3.0	3.6	2.8	2.6	2.8	2.5	3.1	2.9
	50	3.6	3.6	3.3	3.0	2.8	2.8	2.5	3.1
	20	3.6	3.5	3.4	3.2	2.8	2.1	2.6	3.0
Foliage	80	3.1	3.9	2.9	2.9	2.8	2.6	3.1	3.0
	50	3.5	4.8	3.4	3.3	2.8	2.8	2.6	3.3
	20	3.6	4.3	3.6	3.4	2.8	2.1	2.6	3.2
Flower	80	0.0	0.0	0.0	0.0	0.0	0.0	0.0	0.0
	50	0.4	0.5	0.0	0.0	0.0	0.5	0.0	0.2
	20	0.4	0.3	0.0	0.0	0.0	0.0	0.0	0.1
Pest Resistance	80	5.0	5.0	4.8	5.0	5.0	5.0	4.8	4.9
	50	5.0	5.0	4.9	5.0	5.0	4.8	5.0	4.9
	20	5.0	5.0	4.9	5.0	5.0	5.0	4.9	5.0
Disease Resistance	80	3.9	4.1 ^a	3.4 ^a	3.6	4.4	4.8	4.6	4.1 ^a
	50	3.9	4.8 ^{ab}	4.0 ^{ab}	4.4	4.3	4.9	4.4	4.4 ^{ab}
	20	3.9	4.9 ^b	4.1 ^b	4.3	4.7	5.0	4.5	4.5 ^b
Vigor	80	4.3	4.0	2.8	2.9	2.8	2.5	3.4	3.2
	50	4.4	4.0	3.4	3.4	2.6	3.1	2.6	3.4
	20	4.4	3.9	3.4	3.8	2.8	2.5	3.0	3.4

Table 14b. Open House participant ratings for *Rhaphiolepis umbellata* 'RutRhaph1' Southern Moon® on 3 ETo-based irrigation levels in April, July, and September 2019 at UC Davis.

	ET _o %	Spring			Summer			Fall		
		80	50	20	80	50	20	80	50	20
Overall Appearance	Max	5	5	5	5	4	5	5	5	5
	Mean	3.3	3.2	3.4	2.9	2.5	3.1	3.3	2.6	3.2
	Median	3	3	3	3	3	3	3	3	3
	Min	1	2	1	2	1	1	0	1	1
Foliage Quality	Max	5	5	5	5	4	5	5	5	5
	Mean	3.7	3.5	3.9	3.2	2.7	3.7	3.8	2.8	3.7
	Median	4	3	4	3	3	4	4	3	4
	Min	1	2	1	1	1	1	2	1	2
Floral Display	Max	0	4	4	3	0	3	1	3	0
	Mean	0.0	1.2	1.2	0.1	0.0	0.1	0.0	0.1	0.0
	Median	0	1	1	0	0	0	0	0	0
	Min	0	0	0	0	0	0	0	0	0

Table 14c. *Rhaphiolepis umbellata* 'RutRhaph1' Southern Moon® average monthly quality ratings (scale 1-5, 5 = highest) at South Coast REC in Irvine, CA on 3 ETo-based irrigation levels in 2019. Ratings with different superscripts represent significant difference using ANOVA and Tukey's Post-hoc at $p \leq 0.05$ (in black) or ≤ 0.01 (in red).

Category	ET _o %	Apr	May	Jun	Jul	Aug	Sep	Oct	AVG
Overall Appearance	80	3.3	3.4	3.4	3.4	3.4	3.3	4.0 ^a	3.4
	50	3.0	3.1	3.1	3.1	3.3	3.0	4.0 ^a	3.2
	20	2.6	3.1	3.0	3.0	3.1	3.0	3.3 ^b	3.0
Foliage	80	4.0	4.0	3.8	3.9	3.9	3.9	4.9 ^a	4.0
	50	4.0	4.3	4.0	4.1	4.0	4.1	4.6 ^a	4.2
	20	4.0	4.3	3.9	4.0	4.1	3.6	3.5 ^b	3.9
Flower	80	1.1	0.1	0.0	0.3	1.0	0.9	0.5	0.6
	50	1.1	0.4	0.0	0.3	1.0	1.1	0.8	0.7
	20	0.8	0.1	0.0	0.0	0.5	0.4	0.5	0.3
Pest Resistance	80	4.9	5.0	5.0	5.0	5.0	4.9	5.0	5.0
	50	4.9	4.8	4.9	4.8	4.8	4.8	4.9	4.8
	20	4.9	4.6	4.8	4.9	4.9	4.9	5.0	4.8
Disease Resistance	80	5.0	5.0	4.3	4.8	4.8	4.9	4.9	4.8
	50	4.9	5.0	4.4	4.6	4.6	5.0	4.6	4.7
	20	5.0	5.0	4.5	4.6	4.5	4.6	4.4	4.7
Vigor	80	4.4	4.4	4.0	4.0	4.0	3.6 ^a	4.8	4.2 ^a
	50	4.1	4.3	4.0	4.0	3.9	3.1 ^b	4.6	4.0 ^a
	20	3.9	4.1	3.9	3.9	3.6	3.0 ^b	4.1	3.8 ^b

Table 14d. Open House participant ratings for *Rhaphiolepis umbellata* 'RutRhaph1' Southern Moon® on 3 ETo-based irrigation levels in March, June, and September 2019 at South Coast REC.

	ET _o %	Spring			Summer			Fall		
		80	50	20	80	50	20	80	50	20
Overall Appearance	Max	5	5	5	5	5	5	5	5	5
	Mean	4.0	4.3	4.4	3.7	3.7	4.0	3.9	3.6	3.5
	Median	4	4	4	4	4	4	4	4	4
	Min	3	2	2	3	2	3	1	1	1
Foliage Quality	Max	5	5	5	5	5	5	5	5	5
	Mean	4.2	4.5	4.5	4.2	4.3	4.4	4.2	3.9	3.9
	Median	4	5	5	4	4	4	4	4	4
	Min	3	3	2	4	3	3	1	1	1
Floral Display	Max	5	5	5	0	5	5	5	2	1
	Mean	1.3	2.0	2.3	0.0	0.6	0.3	0.2	0.6	0.0
	Median	1	2	2	0	0	0	0	1	0
	Min	0	0	0	0	0	0	0	0	0

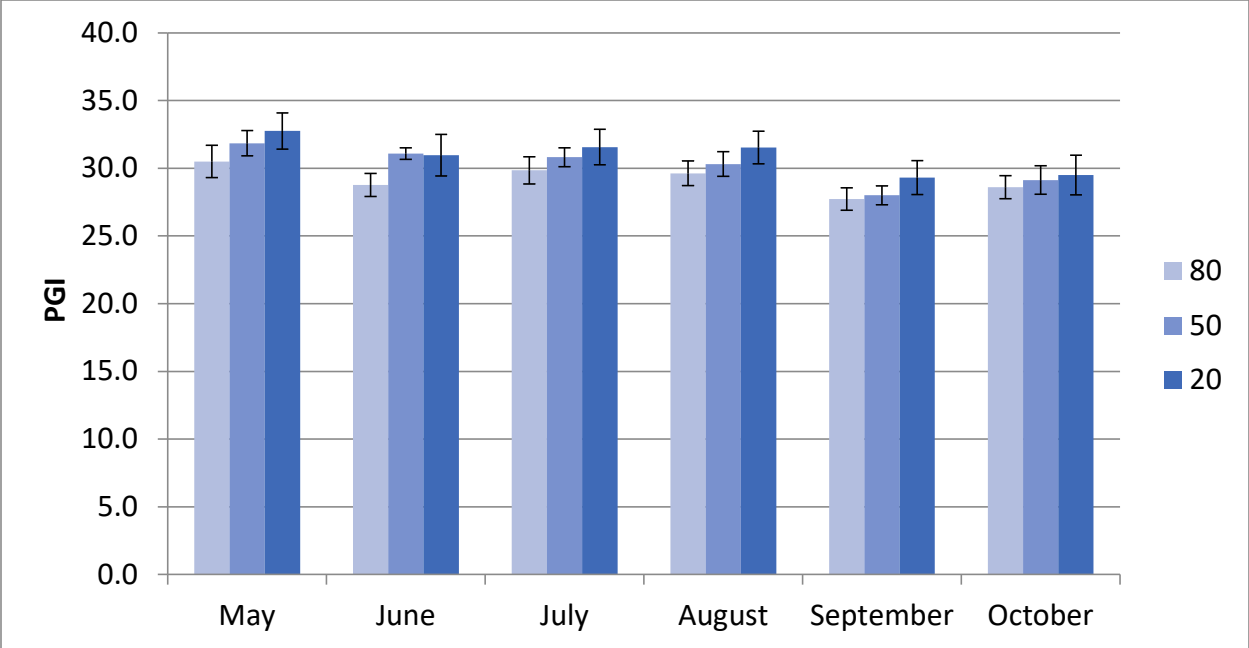


Figure 9a. *Rhamphiolepis umbellata* 'RutRhaph1' Southern Moon® average monthly plant growth index (PGI) at UC Davis on 3 ETo-based irrigation levels in 2019. Error bars represent ± 1 SE.

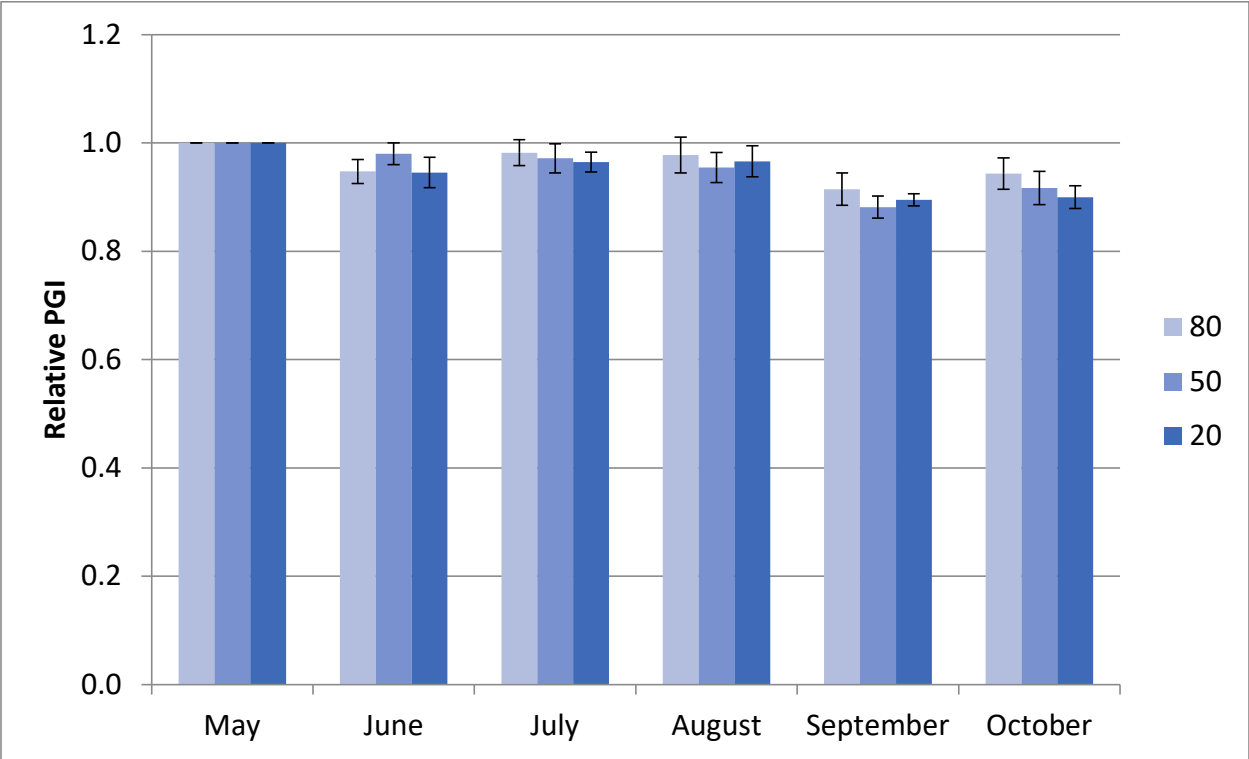


Figure 9b. *Rhamphiolepis umbellata* 'RutRhaph1' Southern Moon® average monthly relative plant growth index (rPGI) at UC Davis on 3 ETo-based irrigation levels in 2019. Error bars represent ± 1 SE.

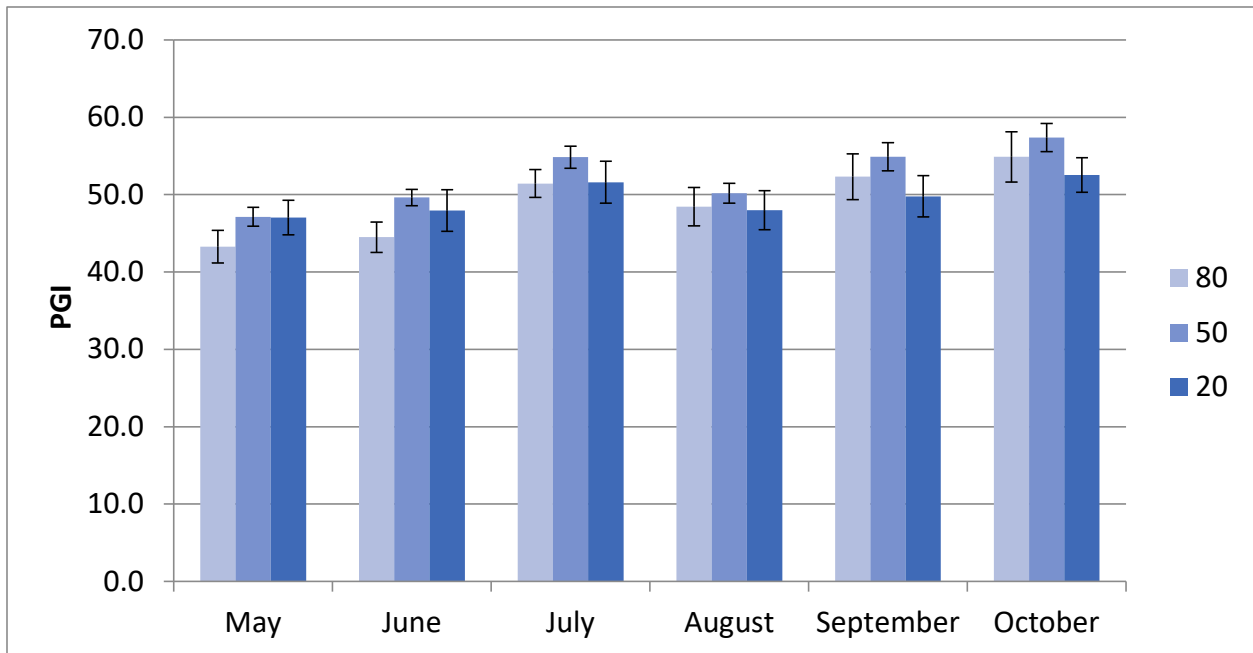


Figure 9c. *Rhapsiolepis umbellata* 'RutRhaph1' Southern Moon® average monthly plant growth index (PGI) at South Coast REC on 3-ETo based irrigation levels in 2019. Error bars represent ± 1 SE.

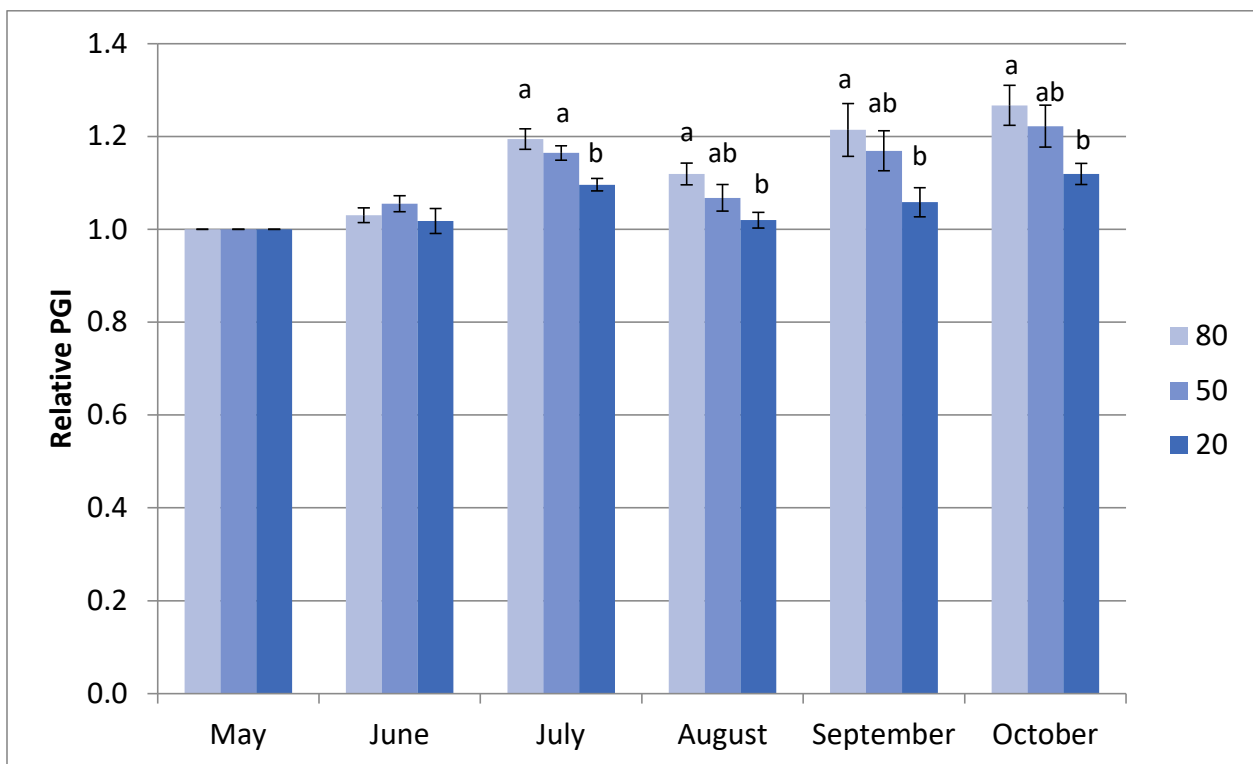


Figure 9d. *Rhapsiolepis umbellata* 'RutRhaph1' Southern Moon® average monthly relative plant growth index (rPGI) at South Coast REC on 3-ETo based irrigation levels in 2019. Error bars represent ± 1 SE. Bars with different letters represent significant difference using ANOVA and Tukey's Post-hoc at $p \leq 0.05$.