

Table 21a. *Distylium* 'Vintage Jade' average monthly quality ratings (scale 1-5, 5 = highest) at UC Davis on 3 ETo-based irrigation levels in 2019. Ratings with different superscripts represent significant difference using ANOVA and Tukey's Post-hoc at  $p \leq 0.05$  (in black) or  $\leq 0.01$  (in red).

Category	ET <sub>0</sub> %	Apr	May	Jun	Jul	Aug	Sep	Oct	AVG
Overall Appearance	80	3.5	3.8	3.6	3.6	3.8	3.9 <sup>ab</sup>	3.8 <sup>a</sup>	3.7 <sup>a</sup>
	50	3.6	3.8	3.8	3.6	3.9	4.1 <sup>a</sup>	3.9 <sup>a</sup>	3.8 <sup>a</sup>
	20	3.6	4.1	3.6	3.3	3.3	3.1 <sup>b</sup>	2.9 <sup>b</sup>	3.4 <sup>b</sup>
Foliage	80	5.0	5.0	3.9	4.1	4.4	4.1 <sup>a</sup>	3.9 <sup>a</sup>	4.3 <sup>a</sup>
	50	5.0	5.0	4.0	4.3	4.1	3.7 <sup>ab</sup>	3.9 <sup>a</sup>	4.3 <sup>a</sup>
	20	4.9	4.9	3.6	3.5	3.5	3.1 <sup>b</sup>	2.9 <sup>b</sup>	3.8 <sup>b</sup>
Flower	80	0.0	0.0	0.0	0.0	0.0	0.0	0.0	0.0
	50	0.0	0.0	0.0	0.0	0.0	0.0	0.0	0.0
	20	0.0	0.0	0.0	0.0	0.0	0.0	0.0	0.0
Pest Resistance	80	5.0	5.0	5.0	4.6	5.0	5.0	5.0	4.9
	50	5.0	5.0	5.0	4.7	5.0	5.0	5.0	5.0
	20	5.0	5.0	5.0	4.8	5.0	5.0	5.0	5.0
Disease Resistance	80	5.0	5.0	5.0	5.0	5.0	5.0	5.0	5.0
	50	5.0	5.0	5.0	5.0	5.0	4.9	5.0	5.0
	20	5.0	5.0	5.0	5.0	5.0	5.0	5.0	5.0
Vigor	80	4.4	4.0	3.6	3.3	3.4	3.9	3.8 <sup>a</sup>	3.8
	50	4.6	4.0	3.6	3.0	3.3	4.3	3.6 <sup>a</sup>	3.8
	20	4.5	4.3	3.8	3.1	3.1	3.4	2.8 <sup>b</sup>	3.6

Table 21b. Open House participant ratings for *Distylium* 'Vintage Jade' on 3 ETo-based irrigation levels in April, July, and September 2019 at UC Davis.

	ET <sub>0</sub> %	Spring			Summer			Fall		
		80	50	20	80	50	20	80	50	20
Overall Appearance	Max	5	5	5	5	4	5	5	5	5
	Mean	3.9	3.3	3.8	3.4	3.2	3.3	3.4	3.4	3.4
	Median	4	3	4	3	3	3	3	3	3
	Min	2	2	2	0	0	0	2	2	2
Foliage Quality	Max	5	5	5	5	5	5	5	5	5
	Mean	4.1	3.7	4.3	3.7	3.4	3.8	3.5	3.6	3.7
	Median	4	4	4	4	3	4	3	4	4
	Min	2	2	2	2	1	2	2	2	2
Floral Display	Max	0	4	0	0	5	0	3	4	5
	Mean	0.0	0.0	0.0	0.0	0.1	0.0	0.1	0.1	0.1
	Median	0	0	0	0	0	0	0	0	0
	Min	0	0	0	0	0	0	0	0	0

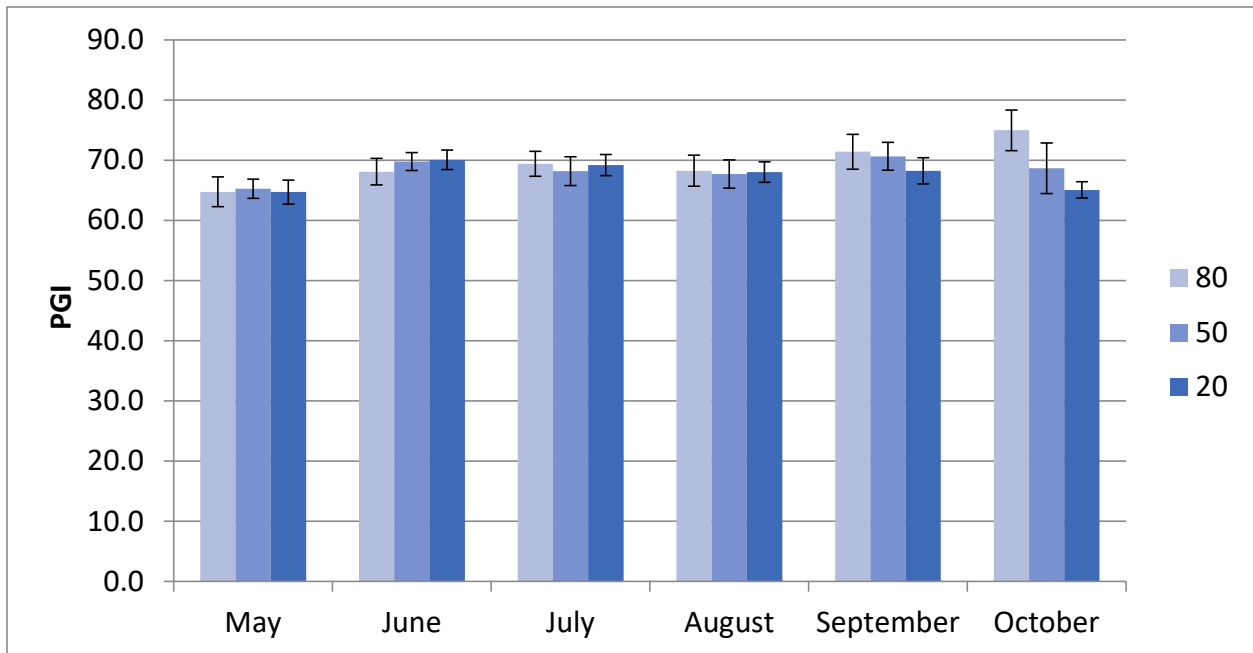


Figure 15a. *Distylium* 'Vintage Jade' average monthly plant growth index (PGI) at UC Davis in Davis, CA on 3 ETo-based irrigation levels in 2019. Error bars represent  $\pm 1$  SE.

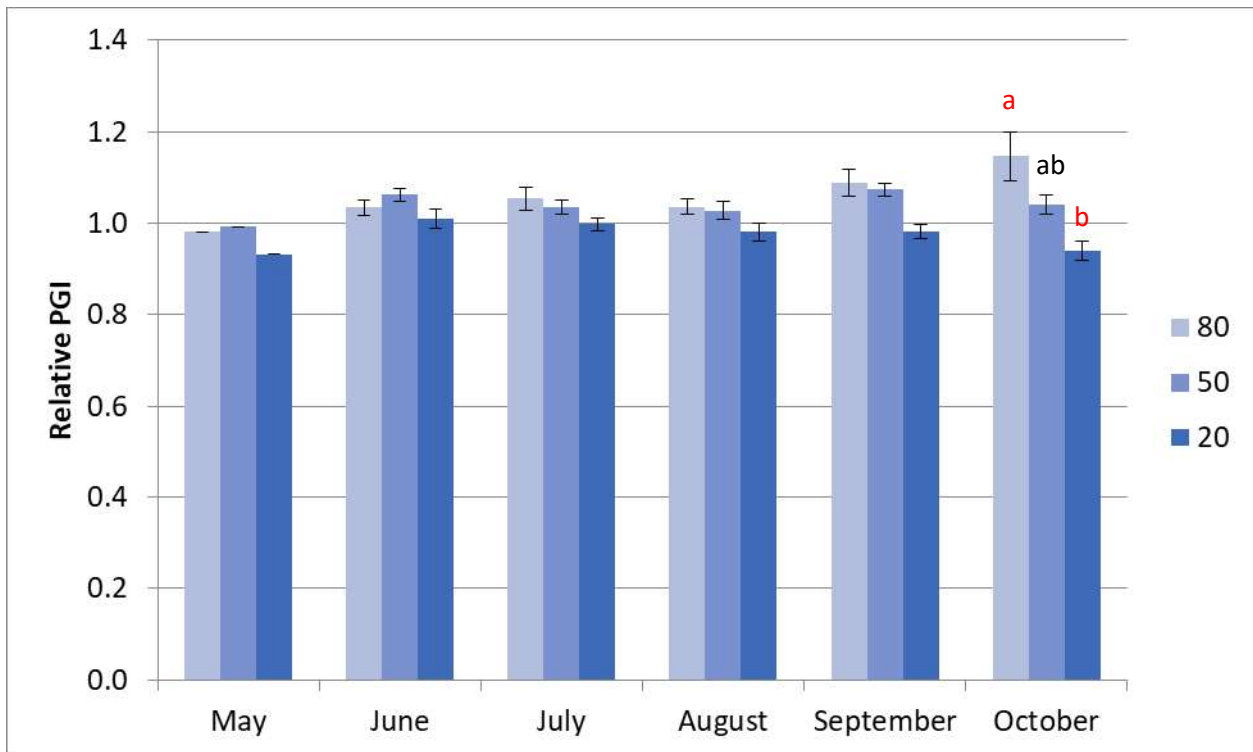


Figure 15b. *Distylium* 'Vintage Jade' average monthly relative plant growth index (rPGI) at UC Davis on 3 ETo-based irrigation levels in 2019. Error bars represent  $\pm 1$  SE. Bars with different letters represent significant difference using ANOVA and Tukey's Post-hoc at  $p \leq 0.05$  (black) or  $p \leq 0.01$  (red).