

Full Sun Data

Table 6a. *Acacia cognata* 'ACGOG01' Cousin Itt average monthly quality ratings (scale 1-5, 5 = highest) at South Coast REC on 3 ETo-based irrigation levels in 2019.

Category	ET ₀ %	Apr	May	Jun	Jul	Aug	Sep	Oct	AVG
Overall Appearance	80	2.9	3.0	2.7	3.1	3.3	3.3	3.2	3.1
	50	2.5	3.0	2.8	3.0	3.5	3.5	3.5	3.1
	20	2.5	2.3	2.7	2.7	3.0	3.0	3.1	2.7
Foliage	80	3.1	3.1	2.9	2.9	3.1	3.3	3.3	3.1
	50	2.7	3.5	2.8	3.0	3.5	3.3	3.4	3.1
	20	2.8	2.3	2.7	2.8	3.2	3.4	3.6	3.0
Flower	80	0.0	0.0	0.0	0.0	0.0	0.0	0.0	0.0
	50	0.0	0.0	0.0	0.0	0.0	0.0	0.0	0.0
	20	0.0	0.0	0.0	0.0	0.0	0.0	0.0	0.0
Pest Resistance	80	5.0	5.0	5.0	5.0	5.0	5.0	5.0	5.0
	50	5.0	5.0	5.0	5.0	5.0	5.0	5.0	5.0
	20	5.0	4.9	5.0	5.0	5.0	5.0	5.0	5.0
Disease Resistance	80	5.0	5.0	5.0	5.0	5.0	5.0	5.0	5.0
	50	5.0	5.0	5.0	5.0	5.0	5.0	5.0	5.0
	20	5.0	5.0	5.0	5.0	5.0	5.0	5.0	5.0
Vigor	80	2.9	3.1	2.7	2.7	2.7	2.7	3.7	2.9
	50	2.8	3.8	3.3	3.3	3.0	3.0	4.0	3.3
	20	2.8	2.5	2.3	2.3	2.6	2.8	3.6	2.7

Table 6b. Open House participant ratings for *Acacia cognata* 'ACGOG01' Cousin Itt on 3 ETo-based irrigation levels in March, June, and September 2019 at South Coast REC.

	ET ₀ %	Spring			Summer			Fall		
		80	50	20	80	50	20	80	50	20
Overall Appearance	Max	5	5	5	5	5	5	5	5	4
	Mean	3.8	3.5	3.0	3.2	3.2	3.1	4.3	4.3	2.8
	Median	4.0	4.0	3.0	3.0	3.0	3.0	5.0	4.0	3.0
	Min	2	2	1	2	2	2	1	3	1
Foliage Quality	Max	5	5	5	5	5	5	5	5	4
	Mean	3.9	3.6	3.1	3.4	3.4	3.2	4.3	4.3	2.9
	Median	4	4	3	3	3	3	5	4	3
	Min	2	2	2	2	2	2	1	3	1
Floral Display	Max	0	4	3	0	0	5	1	3	2
	Mean	0.0	0.1	0.1	0.0	0.0	0.4	0.0	0.1	0.1
	Median	0	0	0	0	0	0	0	0	0
	Min	0	0	0	0	0	0	0	0	0

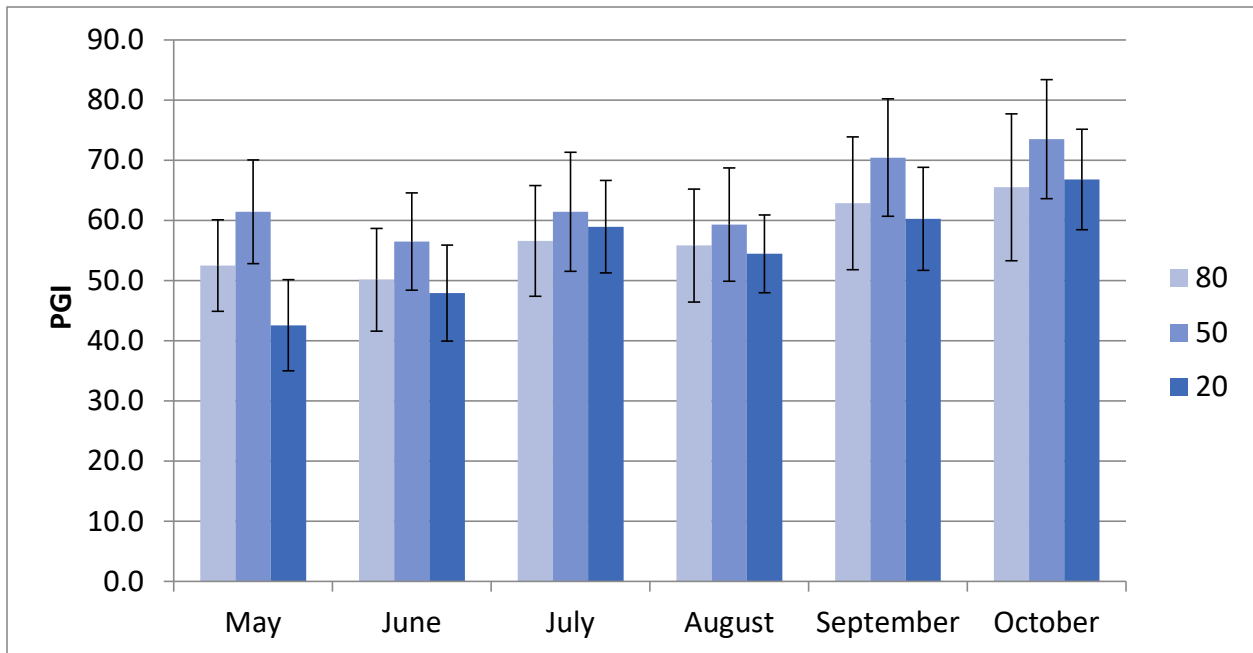


Figure 1a. *Acacia cognata* 'ACGOG01' Cousin Itt average monthly plant growth index (PGI) at South Coast REC on 3 ETo-based irrigation levels in 2019. Error bars represent ± 1 SE.

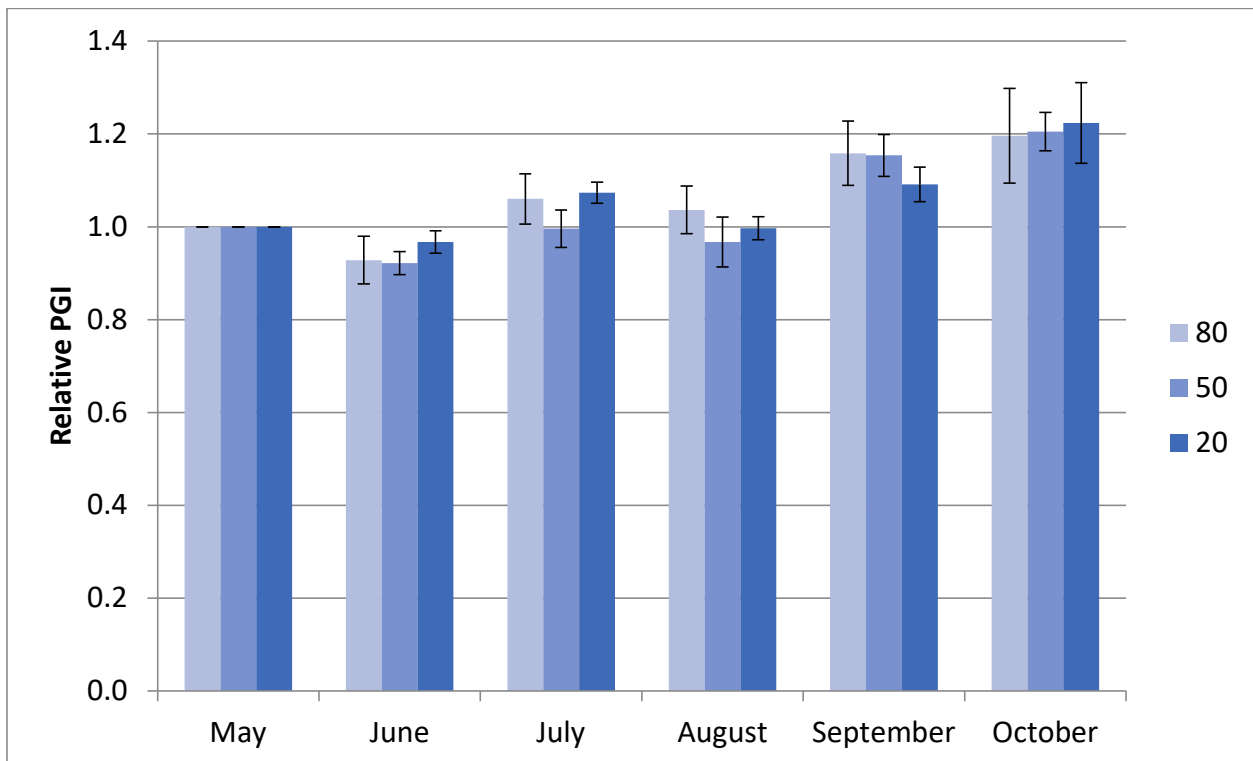


Figure 1b. *Acacia cognata* 'ACGOG01' Cousin Itt average monthly relative plant growth index (RPGI) at South Coast REC on 3 ETo-based irrigation levels in 2019. Error bars represent ± 1 SE.