

Table 20a. *Lomandra confertifolia* 'Seascape' average monthly quality ratings (scale of 1-5) on 3 ET₀-based irrigation levels in 2017. No significant differences between treatments at any level using ANOVA and Tukey's HSD.

	May	June	July	Aug	Sept	Oct	AVG
Overall Appearance							
80%	2.0	1.7	2.0	1.7	1.7	1.7	1.8
50%	2.5	2.5	2.5	3.0	2.5	2.0	2.5
20%	2.7	2.3	2.3	2.3	2.7	2.3	2.4
Foliage							
80%	2.3	3.0	2.3	2.3	2.7	3.0	2.6
50%	2.5	2.5	2.5	3.0	3.5	3.0	2.8
20%	3.3	3.0	3.0	3.0	4.0	3.3	3.3
Flowering							
80%							
50%							
20%		1.0		1.0			1.0
Pest Tolerance							
80%	5.0	5.0	5.0	5.0	5.0	5.0	5.0
50%	5.0	5.0	5.0	5.0	5.0	5.0	5.0
20%	5.0	5.0	5.0	5.0	5.0	5.0	5.0
Disease Resistance							
80%	5.0	5.0	5.0	5.0	5.0	5.0	5.0
50%	5.0	5.0	5.0	5.0	5.0	5.0	5.0
20%	5.0	5.0	5.0	5.0	5.0	5.0	5.0
Vigor							
80%	2.0	1.7	1.7	1.7	2.0	1.7	1.8
50%	2.5	2.5	2.5	3.0	2.5	2.5	2.6
20%	3.0	2.3	2.7	2.0	3.0	2.7	2.6

Table 20b. Open House participant ratings for *Lomandra confertifolia* 'Seascape' on 3 ET₀-based irrigation treatments in May, July, and September 2017.

	ET ₀ %	May			July			September		
		80	50	20	80	50	20	80	50	20
Overall Appearance	Max	5	4	5	5	5	4	-	4	-
	Mean	3.8	2.3	1.4	3.9	2.6	1.2	-	1.9	-
	Median	4	2	1	4	3	1	-	2	-
	Min	1	0	0	3	1	0	-	1	-
Foliage Quality	Max	5	4	3	5	5	4	-	5	-
	Mean	4.0	2.6	1.4	4.0	2.9	1.2	-	2.0	-
	Median	4	2	1	4	3	1	-	2	-
	Min	2	1	1	1	1	0	-	1	-
Floral Display	Max	5	5	1	4	1	2	-	2	-
	Mean	0.6	0.2	0.0	0.6	0.1	0.1	-	0.1	-
	Median	0	0	0	0	0	0	-	0	-
	Min	0	0	0	0	0	0	-	0	-

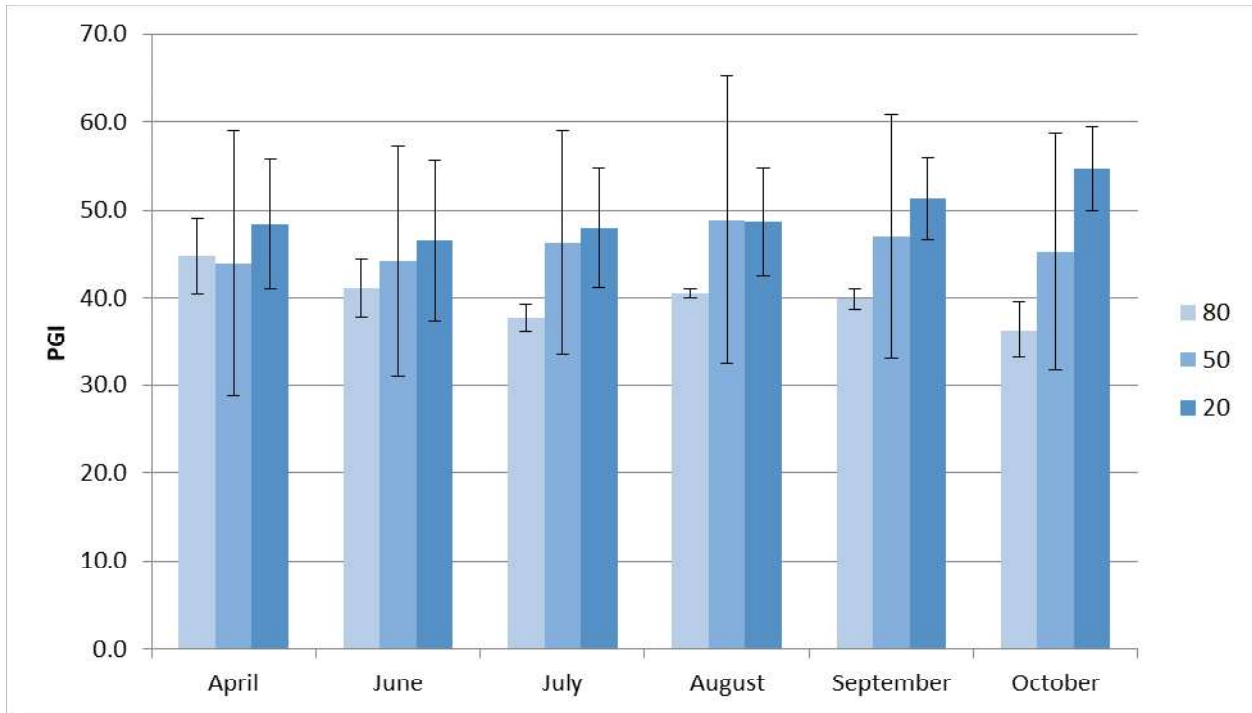


Figure 14a. *Lomandra confertifolia* 'Seascape' average monthly plant growth index on 3ET_o-based irrigation treatments in 2017. Bars represent ±1 SE.

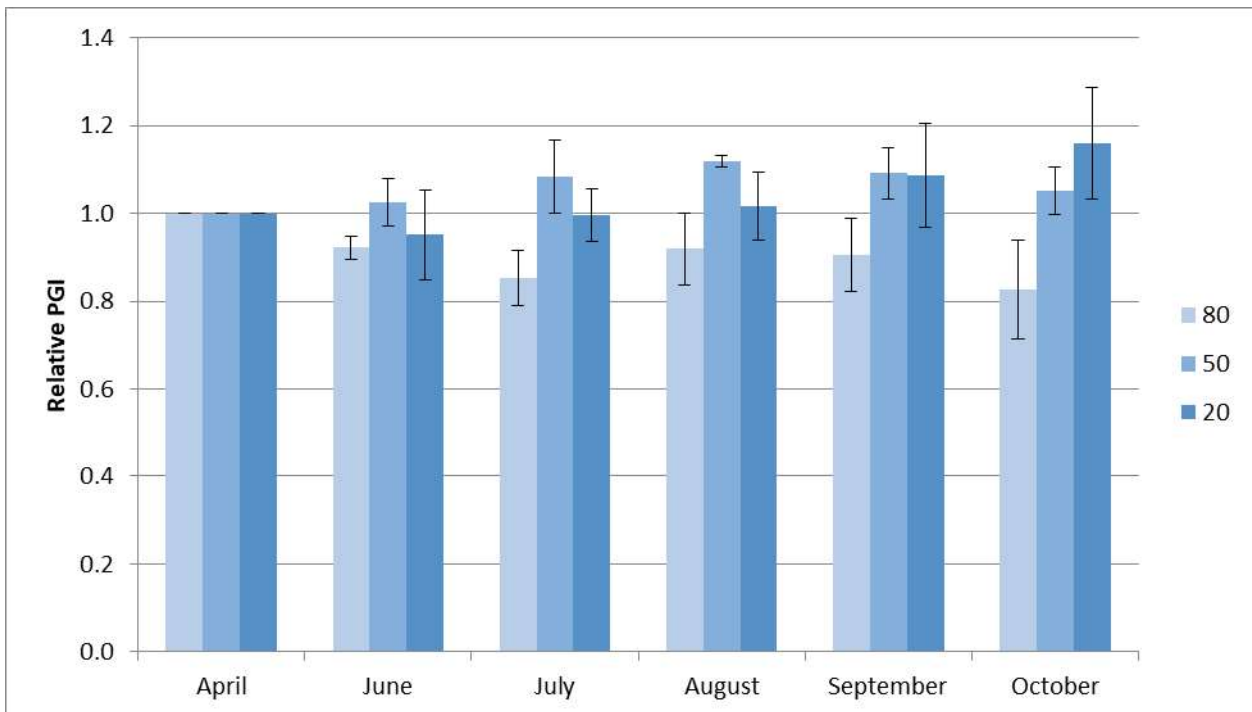


Figure 14b. *Lomandra confertifolia* 'Seascape' average monthly relative plant growth index on 3 ET_o-based irrigation treatments in 2017. There were no significant differences between treatments.