

Table 18a. *Sporobolus wrightii* average monthly quality ratings on (scale of 1-5) 3 ET₀-based irrigation treatments in 2017. Different superscripts denote significant difference within the month at p≤0.05 using ANOVA and Tukey's HSD.

	May	June	July	Aug	Sept	Oct	AVG
Overall Appearance							
80%	3.2	3.8	4.3	4.0 ^b	4.0	4.5	4.0
50%	3.3	3.8	4.5	4.6 ^{ab}	4.4	4.5	4.2
20%	3.4	3.8	4.6	5.0 ^a	4.8	5.0	4.4
Foliage							
80%	4.0	4.7	4.3	4.0	4.0 ^{ab}	3.8	4.1
50%	4.1	4.6	4.5	4.0	3.8 ^b	3.8	4.1
20%	4.6	5.0	5.0	4.4	4.6 ^a	4.2	4.6
Flowering							
80%			2.8	3.7	3.3	4.3	3.5
50%		1.0	4.4	4.5	4.3	4.6	3.8
20%		2.0	3.0	4.2	4.4	5.0	3.7
Pest Tolerance							
80%	5.0	5.0	5.0	5.0	4.8	5.0	5.0
50%	5.0	5.0	5.0	5.0	4.9	4.9	5.0
20%	5.0	5.0	5.0	5.0	5.0	5.0	5.0
Disease Resistance							
80%	5.0	5.0	5.0	5.0	5.0	5.0	5.0
50%	5.0	5.0	5.0	5.0	5.0	5.0	5.0
20%	5.0	5.0	5.0	5.0	5.0	5.0	5.0
Vigor							
80%	4.2	4.3	4.3	3.7	4.5	4.5	4.3
50%	4.6	4.4	4.6	4.6	4.4	4.5	4.5
20%	3.8	4.4	4.6	4.4	4.8	5.0	4.5

Table 18b. Open House participant ratings for *Sporobolus wrightii* on 3 ET₀-based irrigation treatments in May, July, and September 2017.

	ET ₀ %	May			July			September		
		80	50	20	80	50	20	80	50	20
Overall Appearance	Max	5	5	5	5	5	4	5	5	5
	Mean	3.2	3.4	2.7	4.2	4.5	3.5	3.9	3.4	3.7
	Median	3	3	3	4	4	4	4	3	4
	Min	2	2	1	3	3	1	3	2	2
Foliage Quality	Max	5	5	4	5	5	5	5	5	5
	Mean	3.4	3.5	2.8	4.1	4.4	3.8	3.7	3.3	3.5
	Median	3	4	3	4	4	4	4	3	4
	Min	2	2	1	3	4	2	2	2	2
Floral Display	Max	5	3	5	5	5	4	5	5	5
	Mean	0.6	0.2	0.5	2.8	3.6	1.8	3.6	3.6	3.7
	Median	0	0	0	3	4	2	4	4	4
	Min	0	0	0	0	0	0	0	0	0

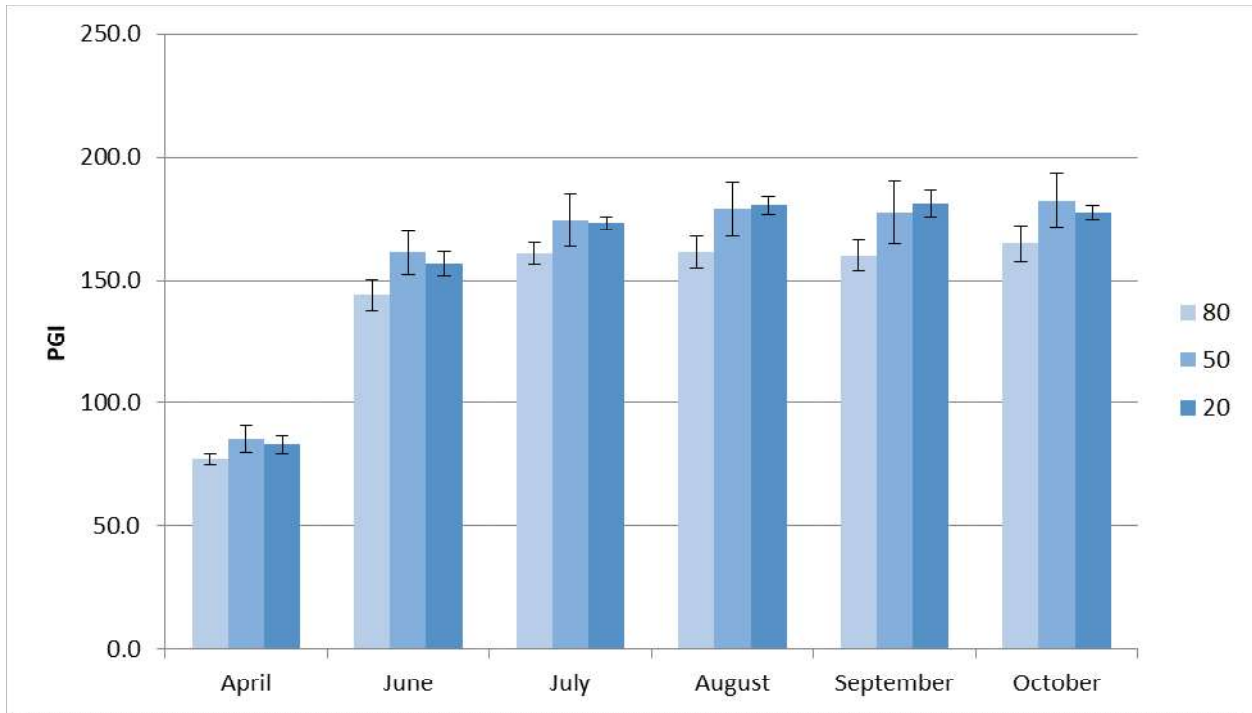


Figure 12a. *Sporobolus wrightii* average monthly plant growth index on 3 ET₀-based irrigation treatments in 2017. (May data unavailable.) Bars represent ±1 SE.

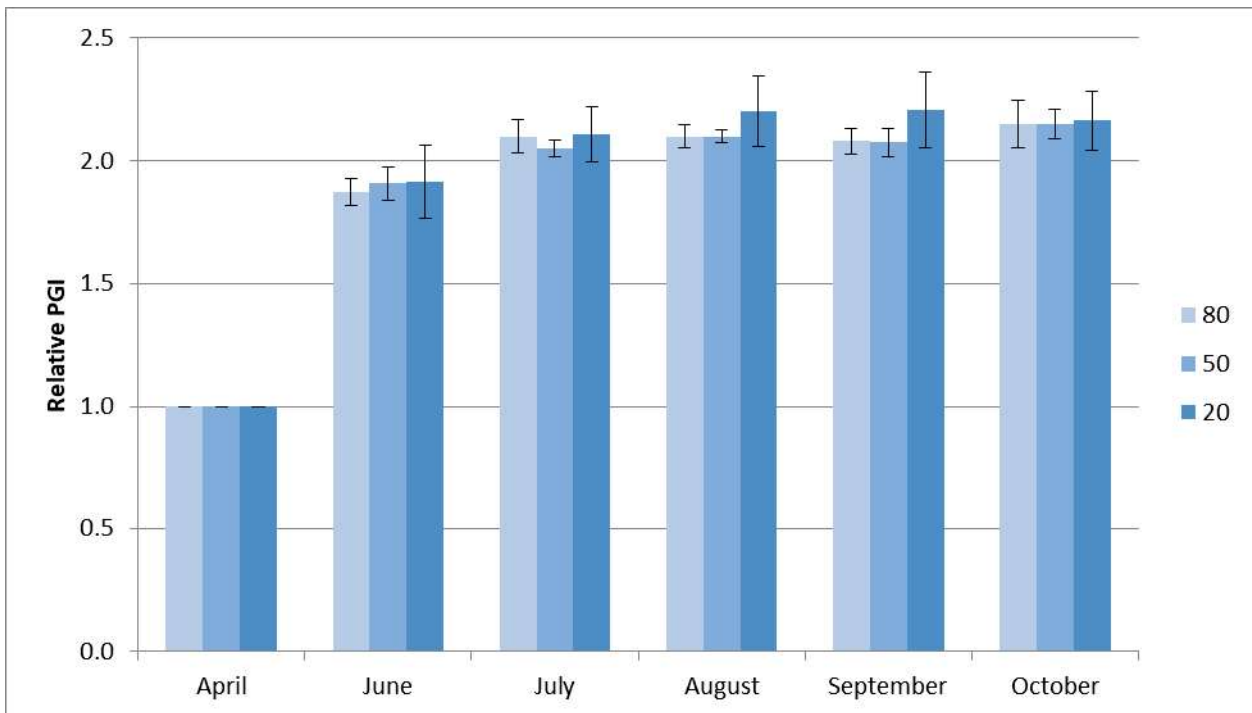


Figure 12b. *Sporobolus wrightii* average monthly relative plant growth index on 3 ET₀-based irrigation treatments in 2017. (May data unavailable.) Bars represent ±1 SE. There were no significant differences between treatments.