

Table 5. *Eucomis* 'Leia' average monthly quality ratings (scale of 1-5) on 4 ET₀-based irrigation levels during 2016. Different superscripts denote significant differences at $p \leq 0.05$ using ANOVA and Tukey's HSD. **Red superscripts denote a significant difference at $p \leq 0.01$.**

Foliage	May	June	July	Aug	Sept	Oct	AVG
80%		4.0	4.0	3.3	2.8	2.2 ^a	3.3
60%	4.0	4.0	4.0	3.6	3.2	3.0 ^{ab}	3.6
40%		3.8	3.8	3.2	2.3	2.2 ^a	3.1
20%	4.3	4.2	4.0	3.2	3.2	3.3 ^b	3.7
Flowering							
80%				3.4			3.4
60%				4.0			4.0
40%		1.0	1.0	2.8			1.6
20%	1.7			3.0			2.3
Pest Tolerance							
80%		5.0	5.0	5.0	5.0	5.0	5.0
60%	4.0	5.0	5.0	5.0	5.0	5.0	4.8
40%		5.0	5.0	5.0	5.0	4.4	4.9
20%	4.3	5.0	5.0	5.0	5.0	5.0	4.9
Disease Resistance							
80%		5.0	5.0	5.0	5.0	5.0	5.0
60%	5.0	5.0	5.0	5.0	5.0	5.0	5.0
40%		5.0	5.0	5.0	5.0	5.0	5.0
20%	4.3	5.0	5.0	5.0	5.0	5.0	4.9
Vigor							
80%		3.2	4.0	4.0	3.5	3.5	3.6
60%	5.0	3.2	3.8	4.8	5.0	4.6	4.4
40%		2.8	4.2	4.0	3.2	4.2	3.7
20%	4.3	2.7	4.2	3.7	4.0	4.5	3.9
Overall Appearance							
80%		2.8	3.8	3.5	2.7	2.7 ^{ab}	3.1
60%	3.0	3.4	3.6	3.6	3.6	3.0 ^{ab}	3.4
40%		2.7	3.8	3.0	2.5	2.2 ^a	2.8
20%	3.7	3.0	3.7	2.8	3.2	3.3 ^b	3.3

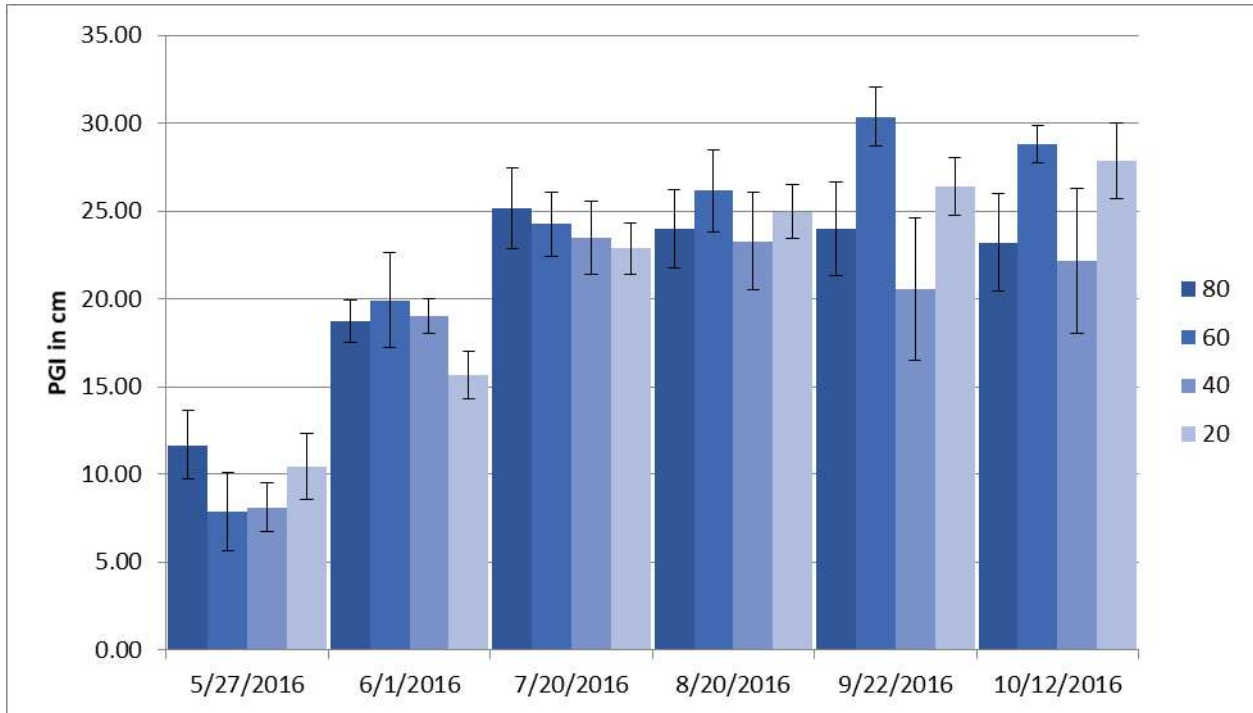


Figure 2g. *Eucomis* 'Leia' average monthly plant growth index on 4 ET₀-based irrigation levels during 2016. Bars represent ±1 SE.

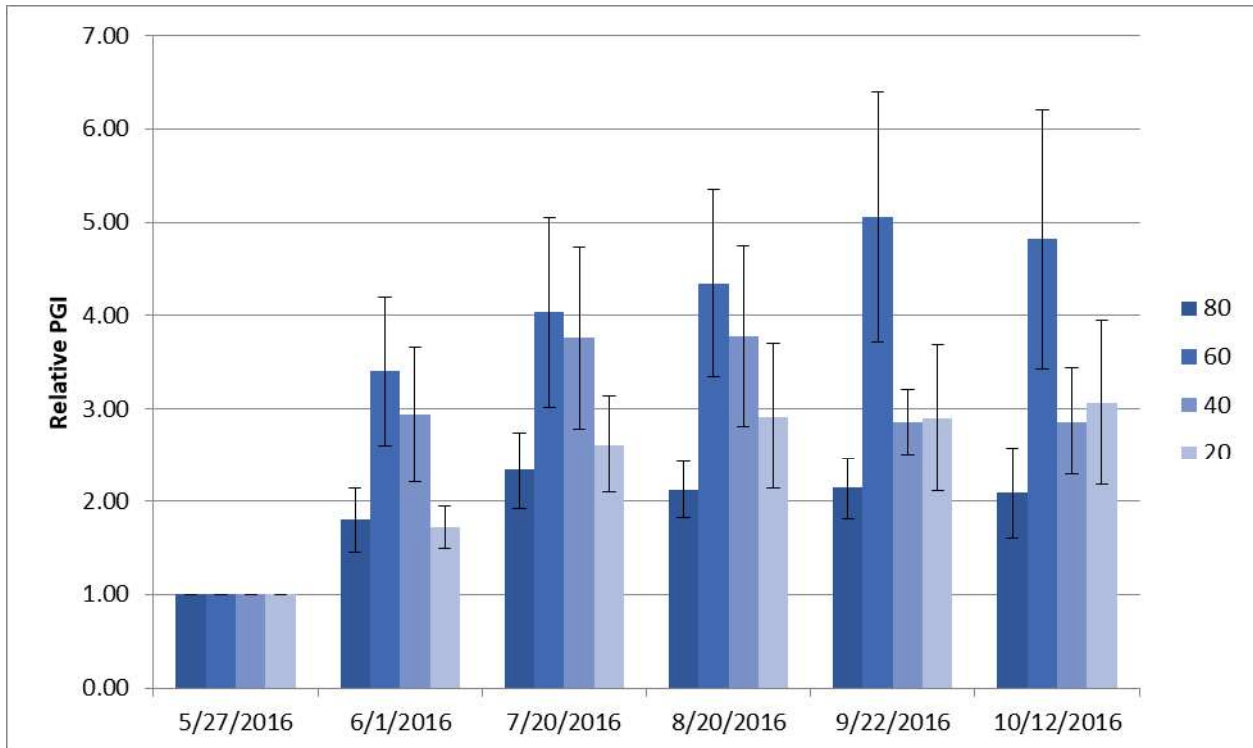


Figure 2h. *Eucomis* 'Leia' average relative monthly plant growth index on 4 ET₀-based irrigation levels during 2016. Bars represent ±1 SE. There were no significant differences between treatments.