

Table 6. *Ozothamnus* 'Silver Cape' average monthly quality ratings (scale of 1-5) on 4 ET₀-based irrigation treatments in 2016. There were no significant differences between treatments.

Foliage	April	May	June	July	Aug	Sept	Oct	AVG
80%	4.6	4.8	4.8	4.4	4.6	4.8	4.6	4.7
60%	4.8	4.7	4.3	4.5	4.5	4.8	4.5	4.6
40%	4.0	4.8	4.8	4.5	4.0	4.0	3.8	4.3
20%	4.8	4.5	5.0	5.0	4.8	4.6	4.4	4.7
Flowering								
80%		2.5	4.3					3.4
60%			3.5					3.5
40%			4.0					4.0
20%			4.0					4.0
Pest Tolerance								
80%	5.0	5.0	5.0	5.0	5.0	5.0	4.6	4.9
60%	5.0	5.0	5.0	5.0	5.0	5.0	5.0	5.0
40%	5.0	5.0	5.0	5.0	5.0	5.0	5.0	5.0
20%	5.0	4.8	5.0	5.0	5.0	5.0	5.0	5.0
Disease Resistance								
80%	5.0	4.8	5.0	4.6	5.0	5.0	5.0	4.9
60%	5.0	5.0	5.0	5.0	5.0	5.0	5.0	5.0
40%	5.0	5.0	5.0	5.0	5.0	5.0	5.0	5.0
20%	5.0	5.0	5.0	5.0	5.0	5.0	5.0	5.0
Vigor								
80%	4.6	4.5	3.8	4.6	4.6	4.8	4.6	4.5
60%	4.3	4.0	3.8	4.3	4.3	4.5	4.3	4.2
40%	4.5	4.8	3.5	4.3	4.5	4.5	4.5	4.4
20%	4.6	4.0	3.6	4.6	4.4	4.8	4.8	4.4
Overall Appearance								
80%	4.0	4.3	3.7	3.8	4.0	4.4	3.8	4.0
60%	3.5	3.3	3.5	3.5	3.8	4.0	4.0	3.7
40%	3.8	3.8	3.8	3.8	3.8	3.8	3.8	3.8
20%	3.8	3.8	3.8	4.0	3.8	3.8	4.0	3.9

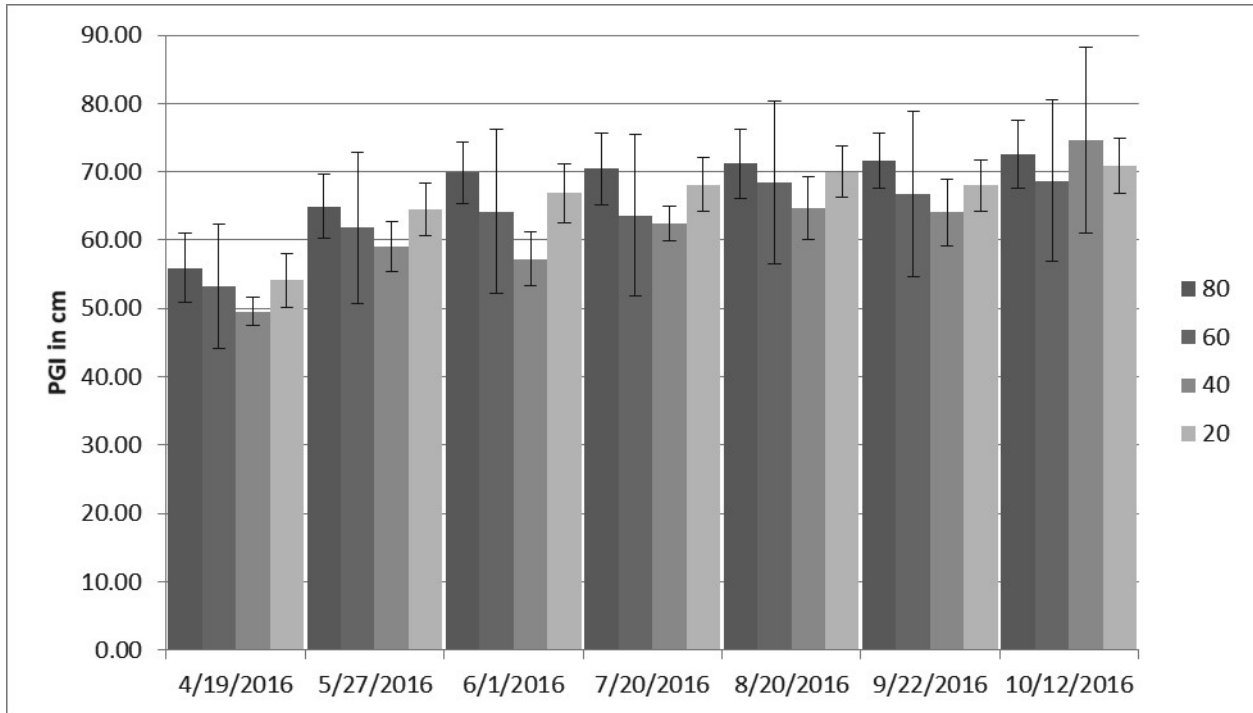


Figure 3g. *Ozothamnus* 'Silver Cape' average plant growth index on 4 ET₀-based irrigation treatments in 2016. Bars represent ±1 SE.

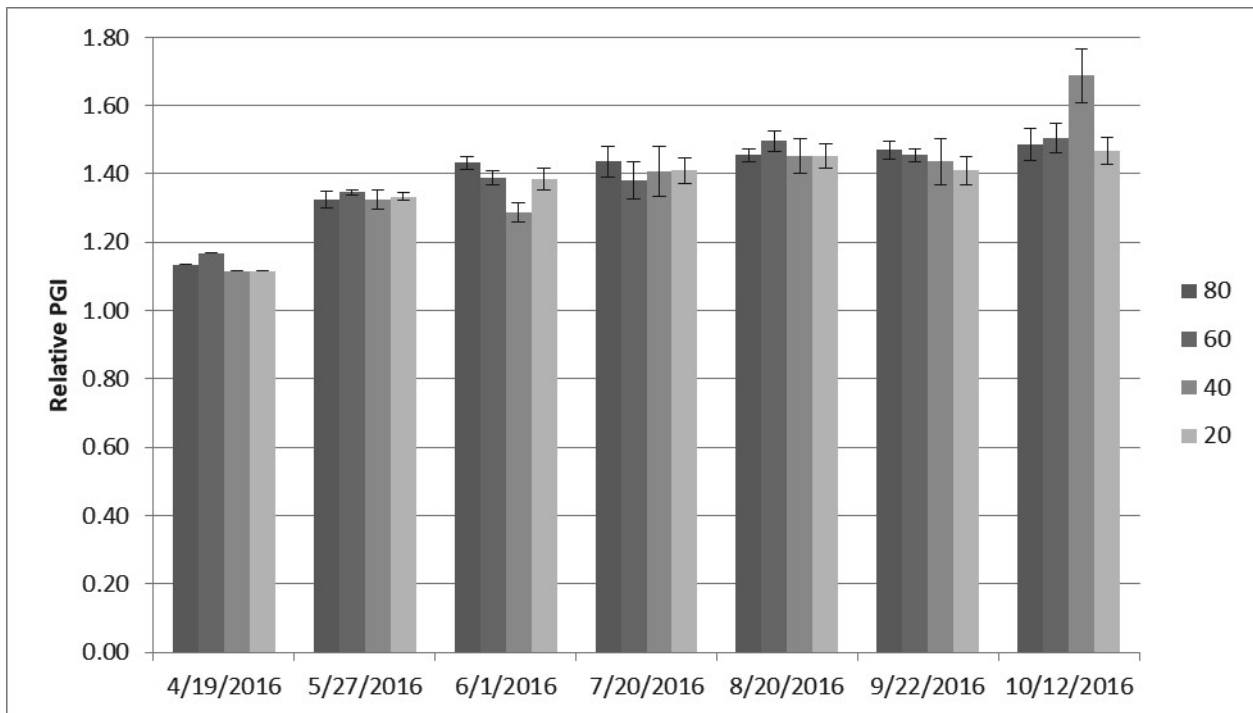


Figure 3h. *Ozothamnus* 'Silver Cape' average relative plant growth index on 4 ET₀-based irrigation treatments in 2016. Bars represent ±1 SE. There were no significant differences between treatments.