

Table 7. *Rosa* 'Harlow Carr' average monthly quality ratings (scale of 1-5) on 4 ET₀-based irrigation treatments in 2016. Different superscripts denote significant differences at p≤0.05 using ANOVA and Tukey's HSD.

Foliage	April	May	June	July	Aug	Sept	Oct	AVG
80%	3.5	3.0	3.2	3.0	2.7	2.7	2.5	2.9
60%	3.8	3.8	3.2	3.2	3.2	3.7	3.0	3.4
40%	3.8	3.0	3.5	3.0	2.7	3.0	2.3	3.0
20%	3.7	4.0	3.3	3.2	2.5	3.0	2.5	3.2
Flowering								
80%	5.0		2.5	2.0	2.7	3.0	2.5 ^a	2.9
60%	4.8	3.0	2.7	2.2	1.8	2.8	1.3 ^b	2.7
40%	5.0	1.0	2.5	1.6	1.8	2.3	1.2 ^b	2.2
20%	5.0	2.0	2.7	1.3	1.0	2.8	1.3 ^b	2.3
Pest Tolerance								
80%	4.2	3.4	5.0	3.2	2.7	3.3	3.2	3.6
60%	4.2	4.0	5.0	3.2	3.3	3.8	3.2	3.8
40%	4.0	3.7	5.0	3.0	2.7	3.3	2.7	3.5
20%	4.2	4.3	5.0	3.2	2.5	3.3	3.0	3.6
Disease Resistance								
80%	3.7	3.0	5.0	3.5	4.0	3.7	3.8	3.8
60%	3.8	4.2	5.0	3.8	4.2	4.2	4.3	4.2
40%	4.0	4.0	4.7	3.5	4.0	4.0	4.0	4.0
20%	3.8	4.0	5.0	3.8	4.0	3.7	4.3	4.1
Vigor								
80%	4.5	3.8	3.3	4.7	4.0	3.8	3.5	3.9
60%	4.3	4.2	3.0	4.7	4.7	4.3	4.5	4.2
40%	4.7	4.2	3.3	4.5	4.2	4.0	4.0	4.1
20%	4.3	4.0	3.3	4.5	3.8	3.8	4.0	4.0
Overall Appearance								
80%	4.3	2.8	2.8	2.8	2.7	2.5	2.2	2.9
60%	4.5	3.4	2.5	3.2	3.1	2.8	2.5	3.1
40%	4.5	3.0	2.8	2.7	2.7	2.5	2.2	2.9
20%	4.5	3.5	2.8	3.2	2.3	2.5	2.3	3.0

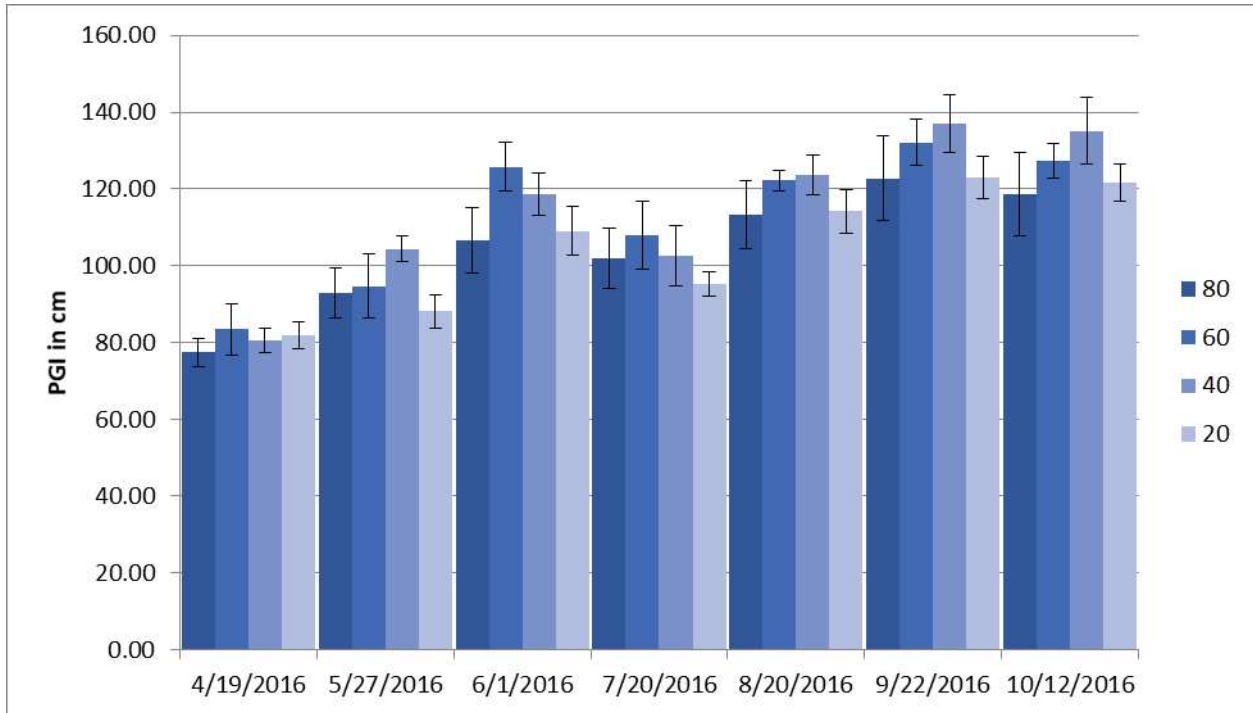


Figure 4d. *Rosa* 'Harlow Carr' average monthly plant growth index on 4 ET₀-based irrigation treatments in 2016. Bars represent ±1 SE.

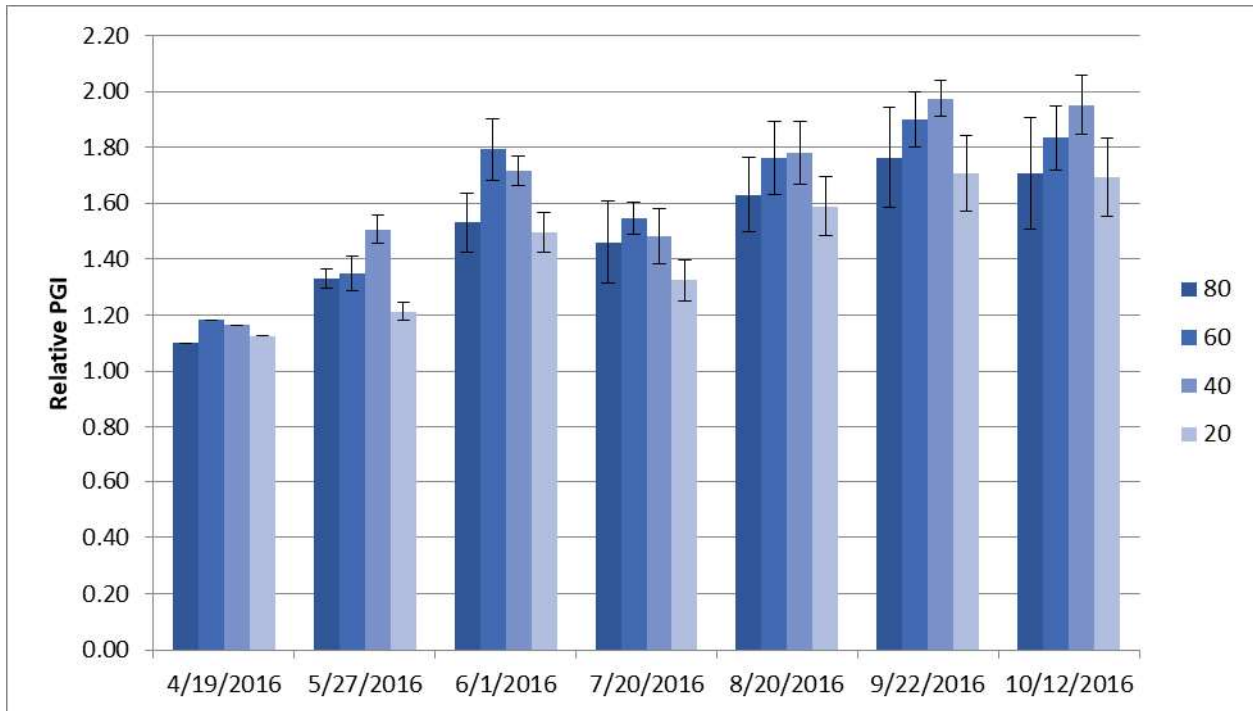


Figure 4d. *Rosa* 'Harlow Carr' average monthly relative plant growth index on 4 ET₀-based irrigation treatments in 2016. Bars represent ±1 SE. There were no significant differences between treatments.