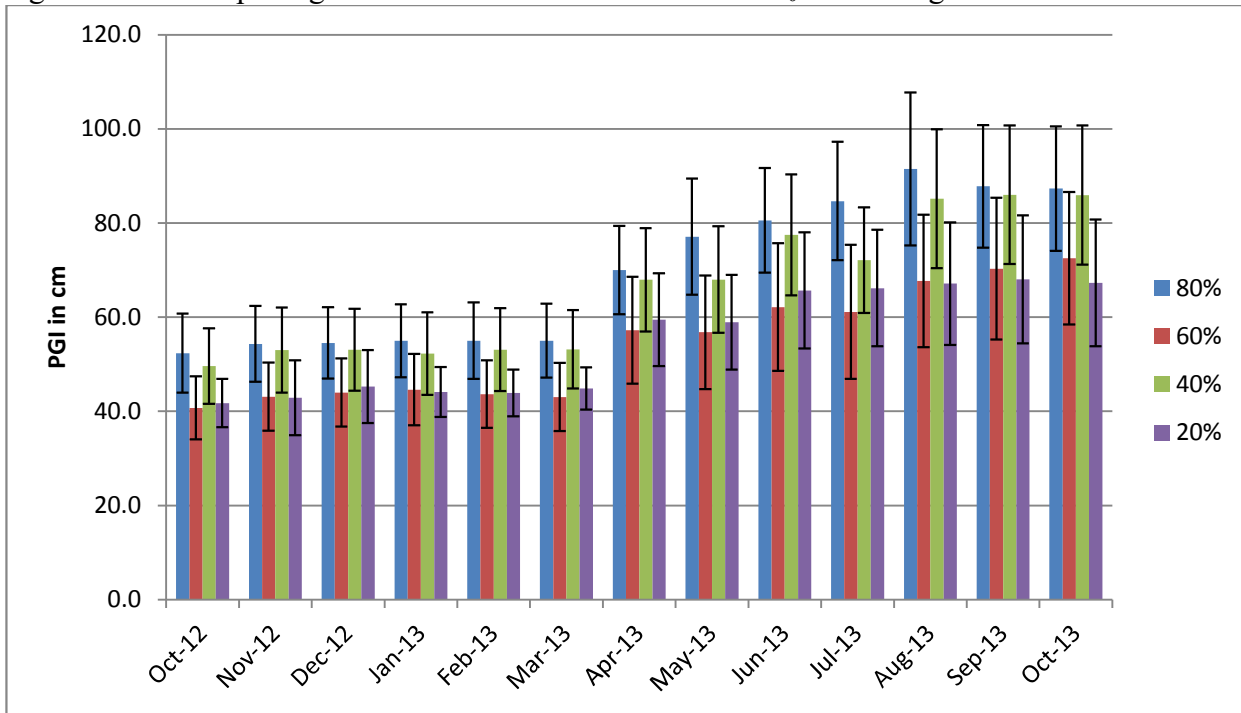


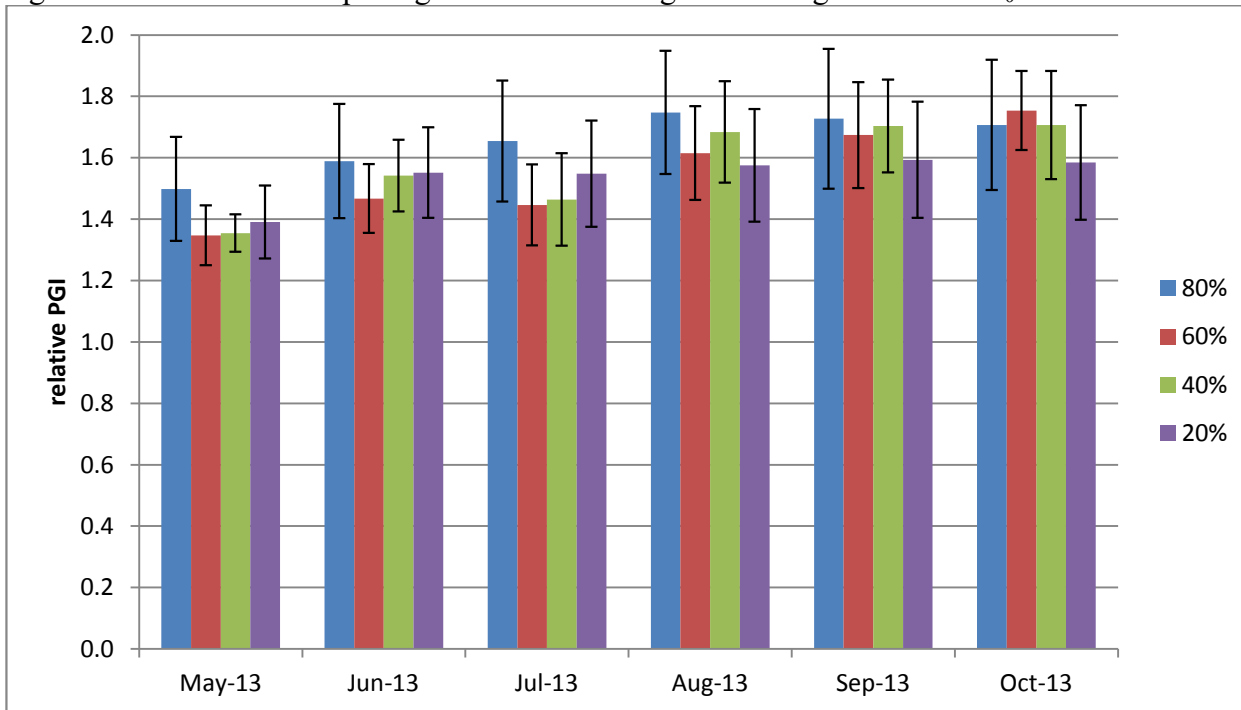
Arctostaphylos densiflora ‘Howard McMinn’

Figure 20a. Mean plant growth index in cm for 2013 on 4 ET₀-based irrigation levels



Error bars represent \pm 1 SE

Figure 20b. Mean relative plant growth index during deficit irrigation on 4 ET₀-based levels in 2013



Error bars represent \pm 1 SE

Table 6. Mean quality ratings in 6 categories on 4 ET₀-based irrigation levels

<i>Arctostaphylos densiflora</i> 'Howard McMinn' average quality ratings 2012-2013														
foliage		NOV	DEC	JAN	FEB	MAR	APR	MAY	JUN	JUL	AUG	SEP	OCT	AVG
	80%	4.2	4.2	3.7	4.3	4.3	4.5	3.7	3.7	3.5	3.2	3.0	3.3	3.8
	60%	4.8	4.3	4.4	4.3	5.0	4.7	4.3	4.2	3.8	3.5	4.0	4.2	4.3
	40%	5.0	4.4	4.2	4.8	4.8	4.4	4.0	3.8	4.0	3.4	3.4	3.6	4.2
	20%	4.7	4.0	4.2	4.0	4.8	4.7	4.2	4.2	4.2	4.1	4.0	4.1	4.3
flowering														
	80%		1.0		1.5	2.2					3.0			1.9
	60%		5.0	1.0	1.5	2.8								2.6
	40%		1.0		1.5	2.6								1.7
	20%				2.0	3.2								2.6
pest tolerance														
	80%	4.5	4.5	4.7	4.7	4.8	4.8	3.7	3.8	3.5	3.3	3.5	3.7	4.1
	60%	5.0	4.7	4.7	4.7	5.0	5.0	4.3	4.3	3.8	3.5	3.8	4.2	4.4
	40%	4.8	4.3	4.8	4.8	5.0	4.8	4.0	3.8	4.0	3.0	3.0	3.5	4.1
	20%	5.0	4.5	4.8	4.5	5.0	4.8	4.3	4.5	4.3	4.0	4.0	4.2	4.5
disease resistance														
	80%	4.7	4.7	4.5	5.0	5.0	5.0	5.0	5.0	4.8	4.8	4.4	5.0	4.8
	60%	5.0	4.7	5.0	5.0	5.0	4.8	5.0	5.0	5.0	5.0	5.0	5.0	5.0
	40%	5.0	5.0	5.0	5.0	5.0	5.0	5.0	5.0	5.0	5.0	5.0	5.0	5.0
	20%	4.7	4.5	4.3	4.5	5.0	5.0	5.0	5.0	5.0	5.0	5.0	5.0	4.8
vigor														
	80%	4.0	4.2	3.7	4.0	4.2	4.5	4.3	4.2	4.3	4.2	4.3	4.2	4.2
	60%	3.3	3.5	3.0	3.5	3.5	3.5	3.5	3.2	3.5	3.7	3.5	3.7	3.4
	40%	3.8	3.6	3.4	3.6	4.4	4.2	4.2	4.2	4.4	4.4	4.4	4.2	4.1
	20%	3.5	3.8	3.0	3.5	3.3	3.8	3.3	3.8	4.0	3.7	3.8	3.7	3.6
overall appearance														
	80%	3.5	3.8	3.4	3.5	3.9	3.7	3.7	3.8	3.5	3.3	3.2	3.4	3.6
	60%	3.5	3.7	3.3	3.7	4.0	3.3	3.7	3.5	3.5	3.3	3.3	3.4	3.5
	40%	3.7	3.8	3.7	4.0	4.5	3.4	3.9	3.6	3.8	3.7	3.4	3.8	3.8
	20%	3.2	3.6	3.2	3.9	4.2	3.3	3.3	3.3	3.8	3.7	3.5	3.5	3.5

Table 7. Master Gardener average annual quality ratings and 2-year growth for *Arctostaphylos densiflora* ‘Howard McMinn’

COUNTY	Alameda	Mariposa	Orange	San Joaquin	SD inland	SD coastal	Shasta	Ventura
Sunset Zone	9	7	23	14	21/23	24	9	21
foliage	4.8	4.6	3.9	4.1	4.4	3.8	3.2	4.5
flowering	3.3	2.8	2.4	1.3	2.5	2.0	2.4	1.2
bloom period	Feb-Mar	May	Jan-Apr, Oct	Jan-Apr	Jan-Feb	Jan-Feb	Jan-Apr	Feb-Mar all year
pest tolerance	4.9	4.8	4.7	5.0	4.6	4.4	5.0	5.0
disease resistance	5.0	4.8	4.8	5.0	4.8	4.4	4.9	5.0
vigor	3.9	4.7	3.9	4.2	4.3	3.5	3.1	4.0
overall appearance	4.4	4.6	4.0	4.2	4.3	3.4	3.0	4.1
MSMTS								
relative PGI	3.3	1.6	2.5	5.3	1.9	1.4	2.2	2.9
avg ht (cm)	84	45	47	149	40	30	50	54
avg wd (cm)	90	64	57	140	68	58	45	88
AVG HT (in)	33	18	19	59	16	12	19	21
AVG WD (in)	36	25	23	55	27	23	18	35