

DATA 2018

Table 13a. *Nandina domestica* ‘Sunset Boulevard’ average monthly quality ratings (scale of 1-5) on 3 ETo-based irrigation levels during 2018.

Category	ETo%	Apr	May	Jun	Jul	Aug	Sep	Oct	AVG
Overall Appearance	80	3.3	2.6	2.3	2.3	2.1	2.5	2.4	2.5
	50	2.6	2.6	2.6	2.0	2.0	2.3	3.1	2.5
	20	3.1	3.1	2.5	1.8	1.6	1.9	2.0	2.3
Foliage	80	3.3	3.0	2.3	2.3	2.1	2.5	2.5	2.6
	50	2.9	2.8	2.8	2.0	2.0	2.1	2.9	2.5
	20	3.4	3.1	2.6	1.8	1.6	1.9	2.1	2.4
Flower	80								
	50								
	20								
Pest Resistance	80	5.0	5.0	5.0	5.0	5.0	5.0	5.0	5.0
	50	5.0	5.0	5.0	5.0	5.0	5.0	5.0	5.0
	20	5.0	5.0	5.0	5.0	5.0	5.0	5.0	5.0
Disease Resistance	80	5.0	3.8	4.3	5.0	4.1	3.5 ^a	4.4	4.3
	50	5.0	3.1	4.1	5.0	3.5	3.5 ^a	4.1	4.1
	20	5.0	3.8	4.1	5.0	4.0	2.5 ^b	3.5	4.0
Vigor	80	3.0	2.6	2.5	2.4	2.3	2.9	2.5	2.6
	50	2.6	2.9	3.1	2.1	2.1	2.3	3.3	2.6
	20	3.1	3.1	2.9	2.0	1.8	2.1	2.4	2.5

Ratings with different superscripts are significantly different using ANOVA and Tukey’s Post-Hoc, p ≤ .05.

Table 13b. Open House participant ratings for *Nandina domestica* ‘Sunset Boulevard’ on 3 ETo-based irrigation treatments in May, July, and September 2018.

	ET _o %	May			July			September		
		80	50	20	80	50	20	80	50	20
Overall Appearance	Max	5	5	5	4	4	3	5	5	4
	Mean	2.5	3.4	2.8	2.5	2.9	2.0	3.5	3.2	2.6
	Median	3	4	3	3	3	2	3	3	3
	Min	1	1	1	1	1	1	2	2	1
Foliage Quality	Max	5	5	5	4	5	3	5	5	5
	Mean	2.6	3.7	3.2	2.7	2.9	2.1	3.8	3.3	2.7
	Median	3	4	3	3	3	2	4	3	3
	Min	1	2	2	1	1	1	1	2	1
Floral Display	Max	0	0	1	1	3	0	5	1	1
	Mean	0.0	0.0	0.0	0.0	0.1	0.0	0.1	0.0	0.0
	Median	0	0	0	0	0	0	0	0	0
	Min	0	0	0	0	0	0	0	0	0

DATA 2018

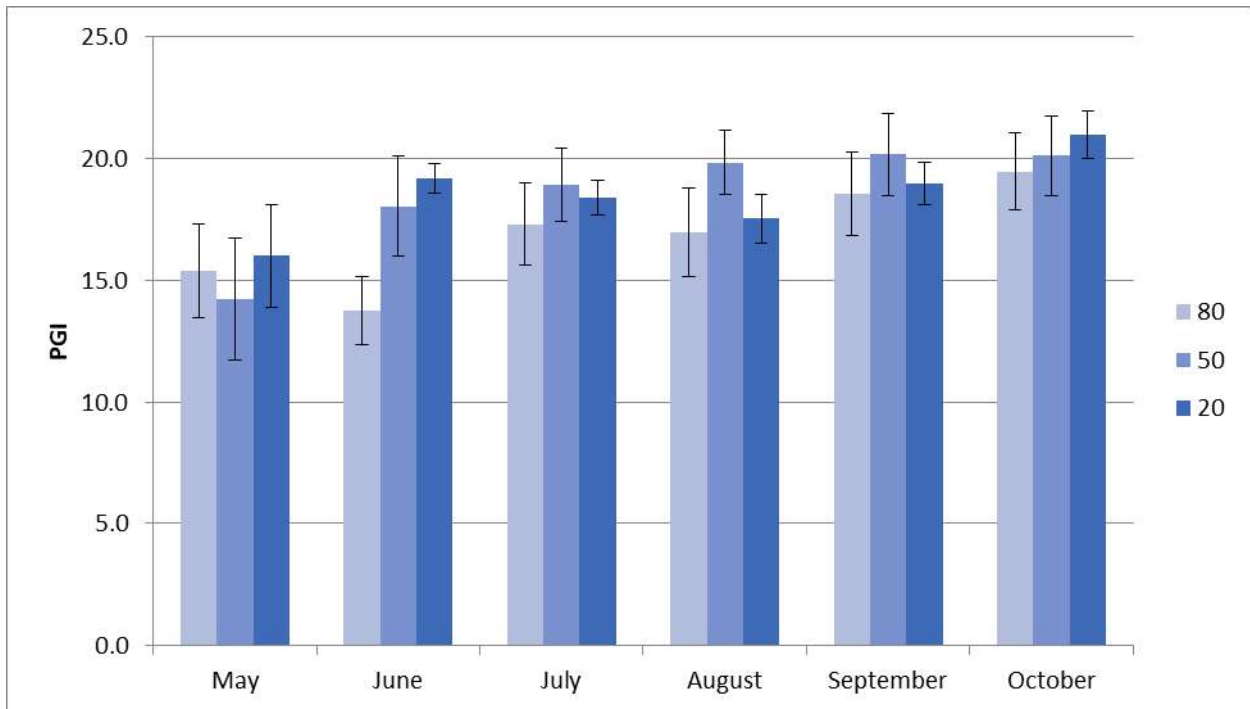


Figure 7a. *Nandina domestica* 'Sunset Boulevard' average monthly plant growth index on 3 ETo-based irrigation treatments in 2018. Bars represent ± 1 SE. There were no significant differences between treatments.

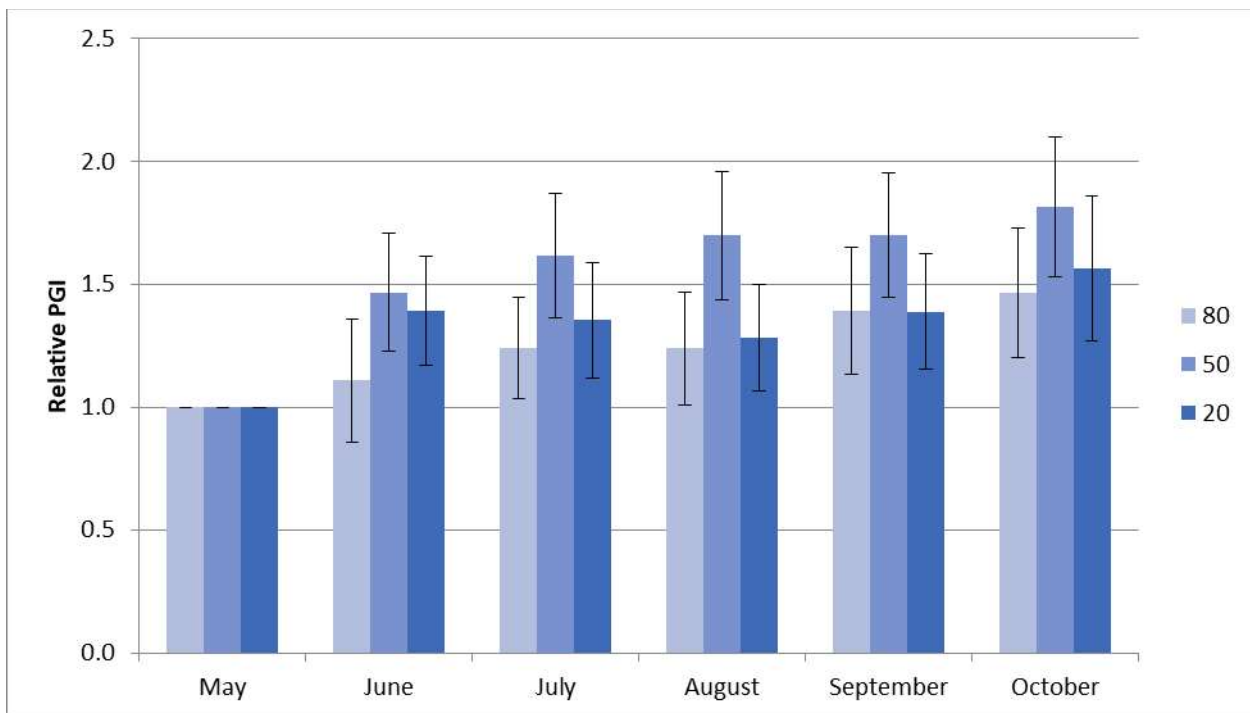


Figure 7b. *Nandina domestica* 'Sunset Boulevard' average monthly relative plant growth index on 3 ETo-based irrigation treatments in 2018. Bars represent ± 1 SE. There were no significant differences between treatments.