

DATA 2018

Table 18a. *Tulbaghia* 'Ashanti' average monthly quality ratings (scale of 1-5) on 3 ETo-based irrigation levels during 2018.

Category	ETo%	Apr	May	Jun	Jul	Aug	Sep	Oct	AVG
Overall Appearance	80	4.5	4.5	4.4	3.9	3.6	2.9	2.6	3.8
	50	3.9	4.4	4.4	3.4	3.6	2.6	2.7	3.6
	20	4.5	4.8	4.3	4.2	2.8	3.0	2.5	3.7
Foliage	80	4.0	4.5	4.1	3.7	3.3	3.4	2.9	3.7
	50	3.9	3.9	3.7	3.4	3.7	3.6	3.4	3.7
	20	4.3	4.5	3.8	4.0	3.1	3.4	3.0	3.7
Flower	80	2.6	4.3	3.7	4.3	4.5	4.4	3.5	3.9
	50	2.2	4.6	4.1	3.9	4.0	4.3	3.6	3.8
	20	3.0	4.8	4.4	4.5	3.8	4.3	3.3	4.0
Pest Resistance	80	5.0	5.0	5.0	5.0	5.0	5.0	5.0	5.0
	50	5.0	5.0	5.0	5.0	5.0	4.9	5.0	5.0
	20	5.0	5.0	5.0	5.0	5.0	5.0	5.0	5.0
Disease Resistance	80	5.0	5.0	5.0	5.0	5.0	5.0	5.0	5.0
	50	5.0	5.0	5.0	5.0	5.0	5.0	5.0	5.0
	20	5.0	5.0	5.0	5.0	5.0	5.0	5.0	5.0
Vigor	80	3.9	4.3	4.0	3.4	3.7	3.7	3.3	3.8
	50	3.7	4.1	4.1	3.6	3.4	3.6	2.9	3.6
	20	3.9	4.4	4.3	3.8	2.8	3.6	2.6	3.6

Table 18b. Open House participant ratings for *Tulbaghia* 'Ashanti' on 3 ETo-based irrigation treatments in May, July, and September 2018.

		May			July			September		
	ETo %	80	50	20	80	50	20	80	50	20
Overall Appearance	Max	5	5	5	5	5	5	4	5	4
	Mean	4.0	4.1	3.8	3.4	3.8	3.6	2.8	3.2	3.0
	Median	4	4	4	3	4	4	3	3	3
	Min	3	3	2	2	2	2	1	1	2
Foliage Quality	Max	5	5	5	4	5	5	5	5	5
	Mean	3.9	4.0	3.7	3.2	3.6	3.5	3.2	3.6	3.5
	Median	4	4	4	3	4	4	3	4	4
	Min	3	3	2	2	2	2	1	2	2
Floral Display	Max	5	5	5	5	5	5	5	5	5
	Mean	3.9	3.8	3.7	3.9	4.2	4.1	2.4	2.8	2.5
	Median	4	4	4	4	4	4	2	3	3
	Min	1	1	1	2	2	2	0	0	1

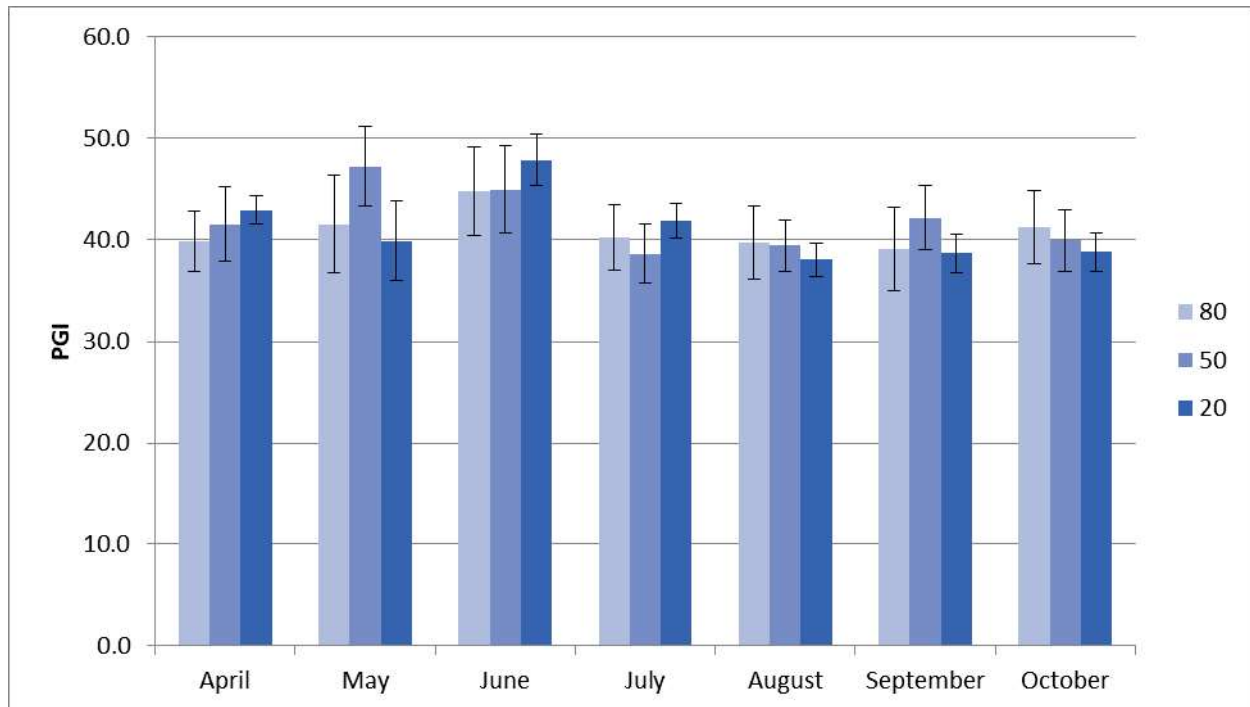


Figure 12a. *Tulbaghia* 'Ashanti' average monthly plant growth index on 3 ETo-based irrigation treatments in 2018. Bars represent ± 1 SE. There were no significant differences between treatments.

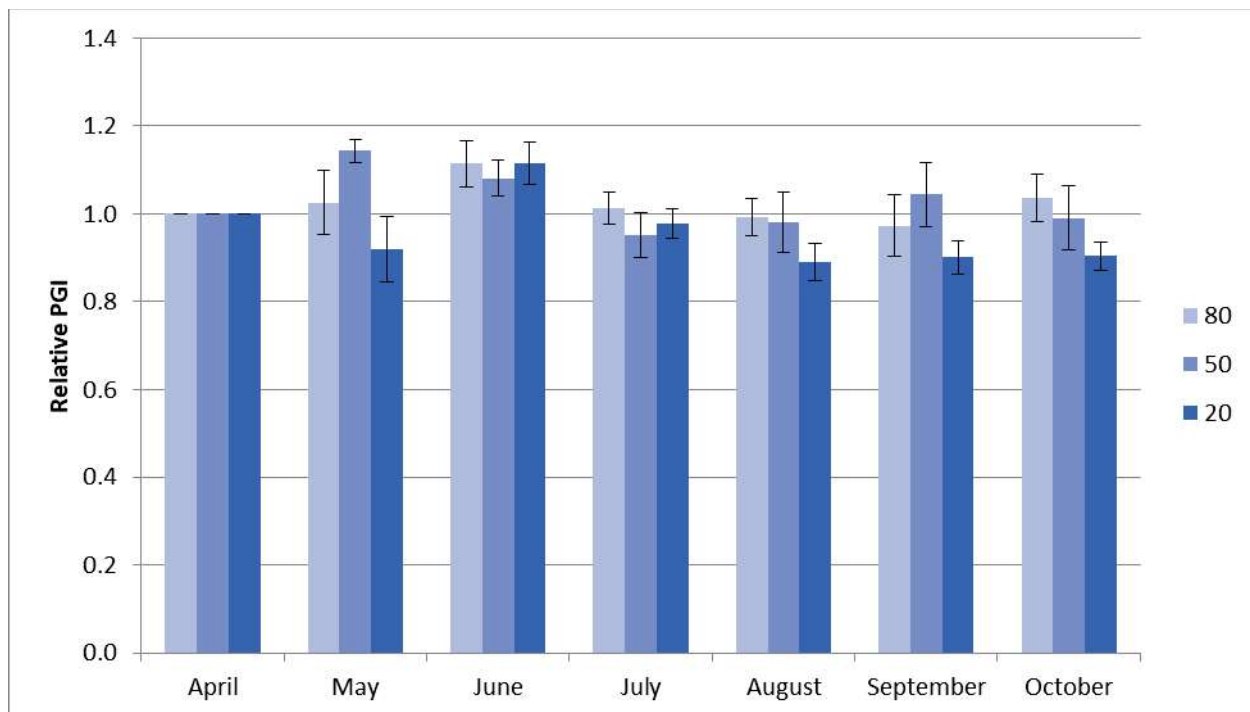


Figure 12a. *Tulbaghia* 'Ashanti' average monthly relative plant growth index on 3 ETo-based irrigation treatments in 2018. Bars represent ± 1 SE. There were no significant differences between treatments.