

DATA 2018

Table 21a. *Abelia grandiflora* ‘Wevol’ average monthly quality ratings (scale of 1-5) on 3 ETo-based irrigation levels during 2018.

Category	ETo%	May	Jun	Jul	Aug	Sep	Oct	AVG
Overall Appearance	80	2.4	2.8	2.4	2.9	2.3	2.4 ^a	2.5
	50	2.8	2.8	2.5	3.0	2.0	1.9 ^b	2.5
	20	2.8	2.7	2.5	2.6	1.9	2.0 ^{ab}	2.4
Foliage	80	5.0	5.0	3.3	3.1	3.8	4.0	4.02 ^a
	50	5.0	4.8	3.0	3.6	3.6	3.8	3.96 ^{ab}
	20	5.0	4.5	3.4	2.8	2.6	2.8	3.5 ^b
Flower	80			1.0	1.0	1.2	1.1	1.1
	50	1.5		1.0	1.0	1.0	1.0	1.1
	20					1.0	1.0	1.0
Pest Resistance	80	5.0	5.0	5.0	5.0	5.0	5.0	5.0
	50	5.0	5.0	5.0	5.0	5.0	5.0	5.0
	20	5.0	5.0	5.0	5.0	5.0	5.0	5.0
Disease Resistance	80	5.0	5.0	5.0	5.0	5.0	5.0	5.0
	50	5.0	5.0	5.0	5.0	5.0	5.0	5.0
	20	5.0	5.0	5.0	5.0	5.0	5.0	5.0
Vigor	80	3.5	3.3	3.3	3.3	2.9	3.3	3.2
	50	3.9	3.1	3.4	3.0	2.6	3.0	3.2
	20	3.9	3.1	3.3	3.0	2.1	2.4	3.0

Table 21b. Open House participant ratings for *Abelia grandiflora* ‘Wevol’ on 3 ETo-based irrigation treatments in May, July, and September 2018.

	ETo %	May			July			September		
		80	50	20	80	50	20	80	50	20
Overall Appearance	Max	5	5	5	3	3	3	5	3	3
	Mean	3.1	3.4	3.1	1.7	1.7	2.1	3.3	2.1	1.6
	Median	3	3	3	2	2	2	3	2	1
	Min	1	2	1	1	1	1	1	1	1
Foliage Quality	Max	5	5	5	3	3	4	5	4	3
	Mean	3.4	3.7	3.6	1.8	1.7	2.4	3.5	2.3	1.7
	Median	3	4	4	2	2	2	3	2	2
	Min	2	2	2	1	1	1	2	1	1
Floral Display	Max	3	3	4	0	0	3	4	2	3
	Mean	0.1	0.0	0.1	0.0	0.0	0.1	1.9	0.8	0.1
	Median	0	0	0	0	0	0	2	1	0
	Min	0	0	0	0	0	0	0	0	0

DATA 2018

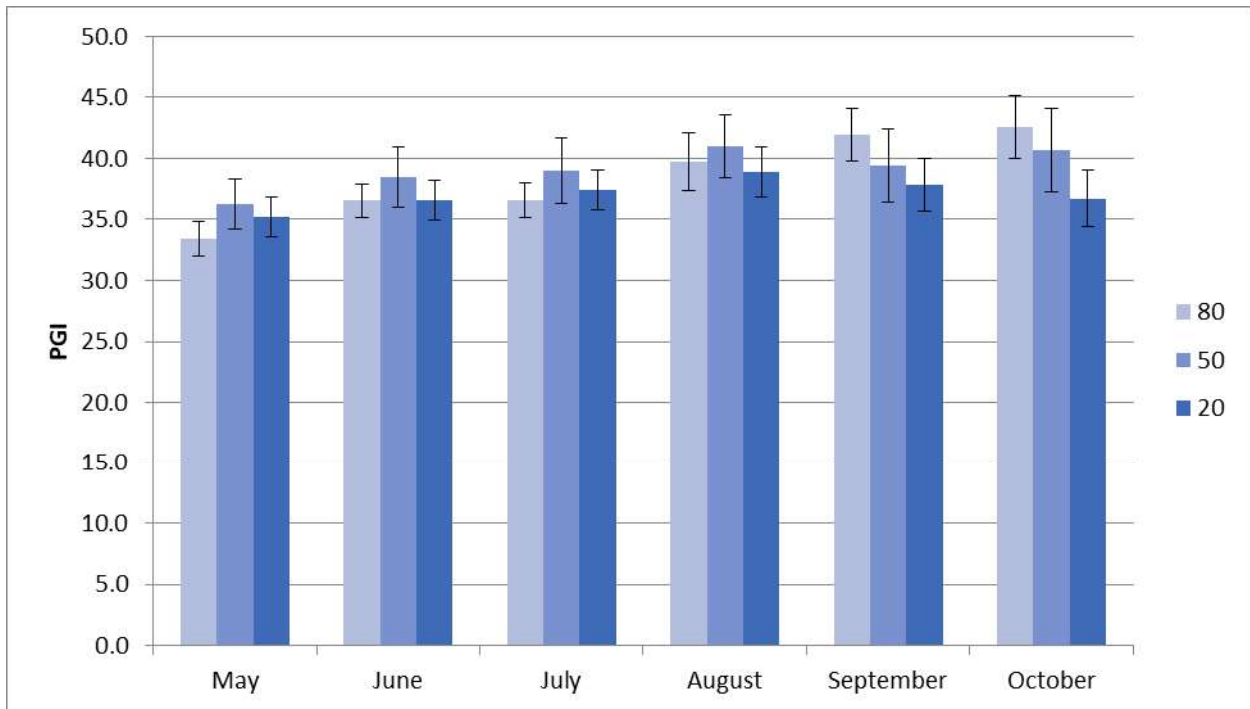


Figure 15a. *Abelia grandiflora* 'Wevol' average monthly plant growth index on 3 ETo-based irrigation treatments in 2018. Bars represent ± 1 SE. There were no significant differences between treatments.

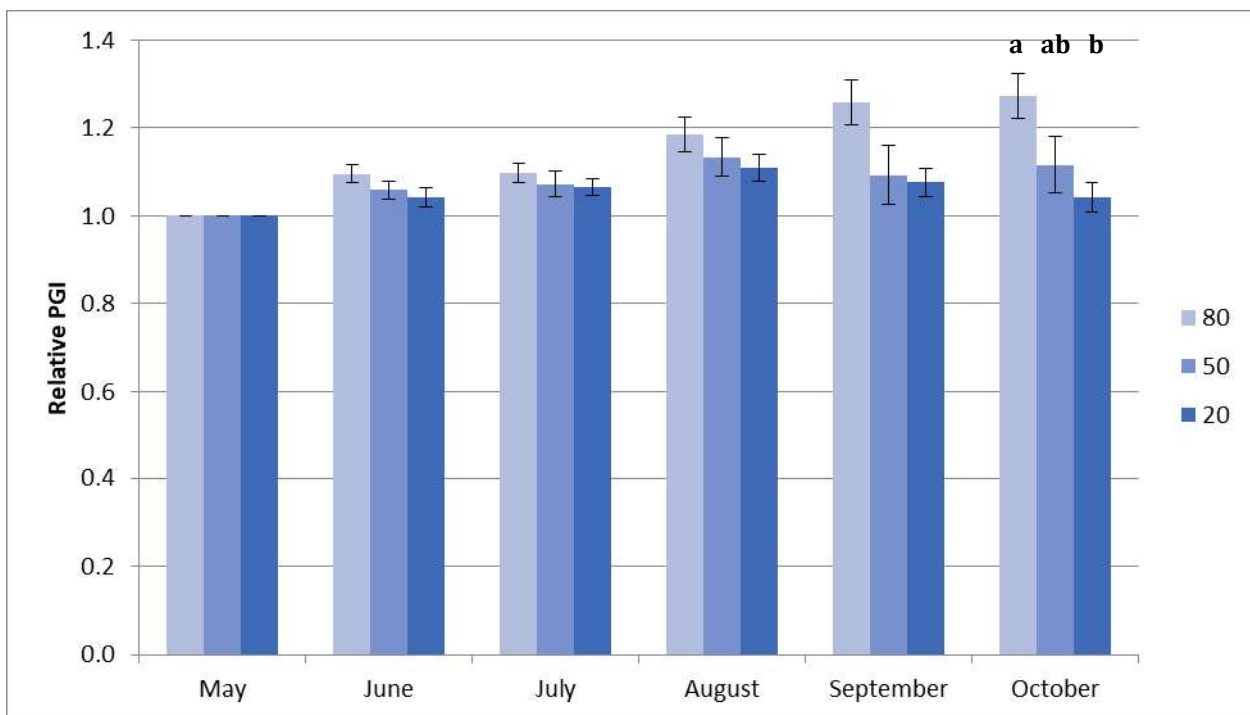


Figure 15a. *Abelia grandiflora* 'Wevol' average monthly relative plant growth index on 3 ETo-based irrigation treatments in 2018. Bars represent ± 1 SE. Bars with different letters represent significant difference using ANOVA and Tukey's Post-hoc at $p \leq 0.05$.