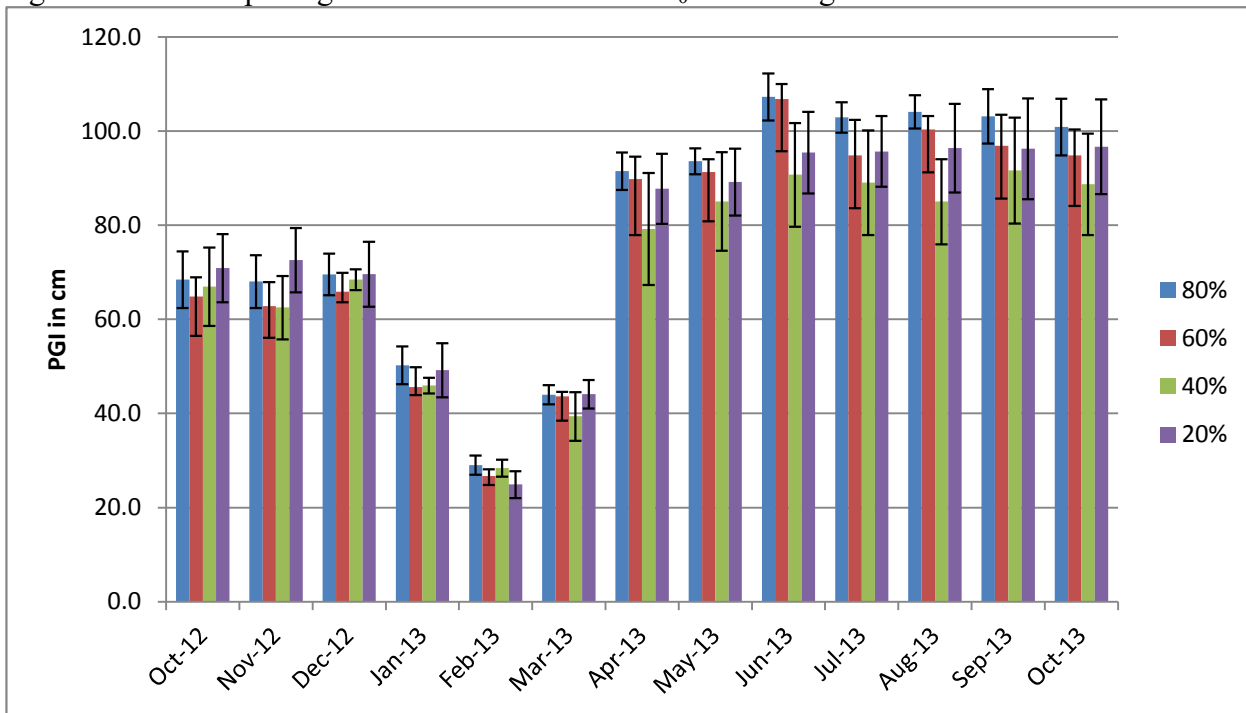


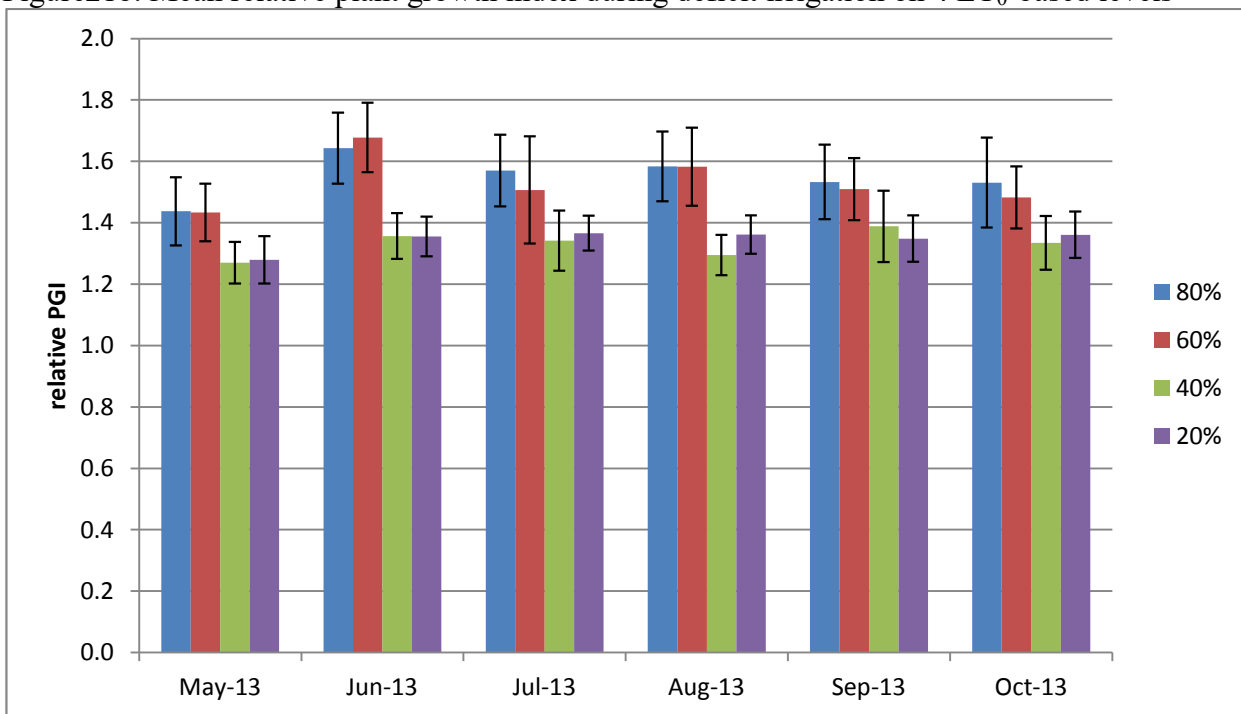
***Calamagrostis × acutiflora* ‘Karl Foerster’**

Figure 21a. Mean plant growth index in cm on 4 ET<sub>0</sub>-based irrigation levels



Error bars represent  $\pm$  1 SE

Figure 21b. Mean relative plant growth index during deficit irrigation on 4 ET<sub>0</sub>-based levels



Error bars represent  $\pm$  1 SE

Table 8. Mean quality ratings in 6 categories on 4 ET<sub>0</sub>-based irrigation levels

<i>Calamagrostis × acutiflora</i> 'Karl Foerster'												
foliage	NOV	DEC	MAR	APR	MAY	JUN	JUL	AUG	SEP	OCT	AVG	
<b>80%</b>	4.8	4.0	5.0	5.0	5.0	4.3	4.3	3.8	3.2	3.7	<b>4.3</b>	
<b>60%</b>	4.5	4.0	5.0	5.0	4.8	4.0	4.0	3.8	3.2	3.2	<b>4.2</b>	
<b>40%</b>	4.2	4.1	4.7	4.8	4.8	4.0	3.5	3.5	3.3	3.5	<b>4.0</b>	
<b>20%</b>	4.3	3.8	5.0	5.0	5.0	4.3	4.0	4.0	3.2	3.3	<b>4.2</b>	
flowering												
<b>80%</b>					5.0	5.0	5.0	5.0	5.0	5.0	<b>5.0</b>	
<b>60%</b>	2.0	1.0			5.0	5.0	5.0	5.0	5.0	5.0	<b>4.1</b>	
<b>40%</b>	2.0		1.0		4.3	5.0	4.8	4.5	4.5	4.3	<b>3.8</b>	
<b>20%</b>	1.0	2.0			4.8	4.8	4.5	4.5	4.7	4.7	<b>3.9</b>	
pest tolerance												
<b>80%</b>	5.0	5.0	5.0	5.0	5.0	5.0	5.0	5.0	5.0	5.0	<b>5.0</b>	
<b>60%</b>	5.0	5.0	5.0	5.0	5.0	5.0	5.0	5.0	5.0	5.0	<b>5.0</b>	
<b>40%</b>	5.0	5.0	5.0	5.0	4.8	5.0	5.0	5.0	5.0	5.0	<b>5.0</b>	
<b>20%</b>	5.0	5.0	5.0	5.0	5.0	5.0	5.0	5.0	5.0	5.0	<b>5.0</b>	
disease resistance												
<b>80%</b>	4.8	4.0	5.0	5.0	5.0	4.8	5.0	5.0	5.0	5.0	<b>4.9</b>	
<b>60%</b>	4.8	4.5	5.0	5.0	5.0	4.8	5.0	5.0	5.0	5.0	<b>4.9</b>	
<b>40%</b>	4.8	3.8	5.0	5.0	5.0	4.8	4.5	4.5	4.7	5.0	<b>4.7</b>	
<b>20%</b>	4.5	3.8	5.0	5.0	5.0	5.0	5.0	5.0	5.0	5.0	<b>4.8</b>	
vigor												
<b>80%</b>	4.0	4.5	4.8	4.7	4.8	4.7	4.8	4.7	4.8	4.7	<b>4.7</b>	
<b>60%</b>	4.0	4.3	4.3	4.7	4.8	4.8	4.7	4.3	4.2	4.2	<b>4.4</b>	
<b>40%</b>	3.7	4.6	3.7	3.8	4.7	4.7	4.7	4.7	4.3	4.7	<b>4.3</b>	
<b>20%</b>	4.0	4.2	4.2	4.2	4.3	4.3	4.5	4.5	3.8	3.8	<b>4.2</b>	
overall appearance												
<b>80%</b>	3.8	3.9	3.8	4.2	5.0	5.0	5.0	5.0	5.0	5.0	<b>4.6</b>	
<b>60%</b>	3.8	3.8	3.5	4.2	5.0	5.0	5.0	4.8	5.0	4.8	<b>4.5</b>	
<b>40%</b>	3.7	3.9	3.5	3.7	4.8	5.0	4.8	4.7	4.8	4.7	<b>4.4</b>	
<b>20%</b>	3.7	3.7	3.2	3.8	4.8	4.8	4.8	4.7	4.7	4.7	<b>4.3</b>	

Plants were cut back in late January and not rated again until March.

Table 9. Master Gardener average annual quality ratings and 2-year growth for *Calamagrostis* × *acutiflora* ‘Karl Foerster’

COUNTY	Alameda	Nevada	Orange	San Joaquin	SD coastal	Shasta
<b>Sunset Zone</b>	<b>9</b>	<b>7</b>	<b>23</b>	<b>14</b>	<b>24</b>	<b>9</b>
foliage	3.5	3.9	2.2	3.8	3.8	3.4
flowering	5.0	4.5	1.0	3.7	*	4.1
bloom period	Jun-Oct	Jun-Nov	Sept	May-Nov		Jun-Nov
pest tolerance	5.0	5.0	5.0	5.0	5.0	5.0
disease						
resistance	4.9	5.0	5.0	5.0	5.0	5.0
vigor	3.5	4.0	2.4	4.0	4.1	3.5
overall appearance	<b>3.5</b>	<b>3.7</b>	<b>2.2</b>	<b>4.0</b>	<b>3.7</b>	<b>3.4</b>
<b>MSMTS</b>						
relative PGI	2.5	1.9	1.6	1.2	2.7	2.5
avg ht (cm)	79	94	26	33	101	150
avg wd (cm)	105	101	45	39	147	77
AVG HT (in)	31	37	10	13	40	59
AVG WD (in)	41	40	18	15	58	30

\*Plants were pruned just before bloom period by a gardener unfamiliar with the project.