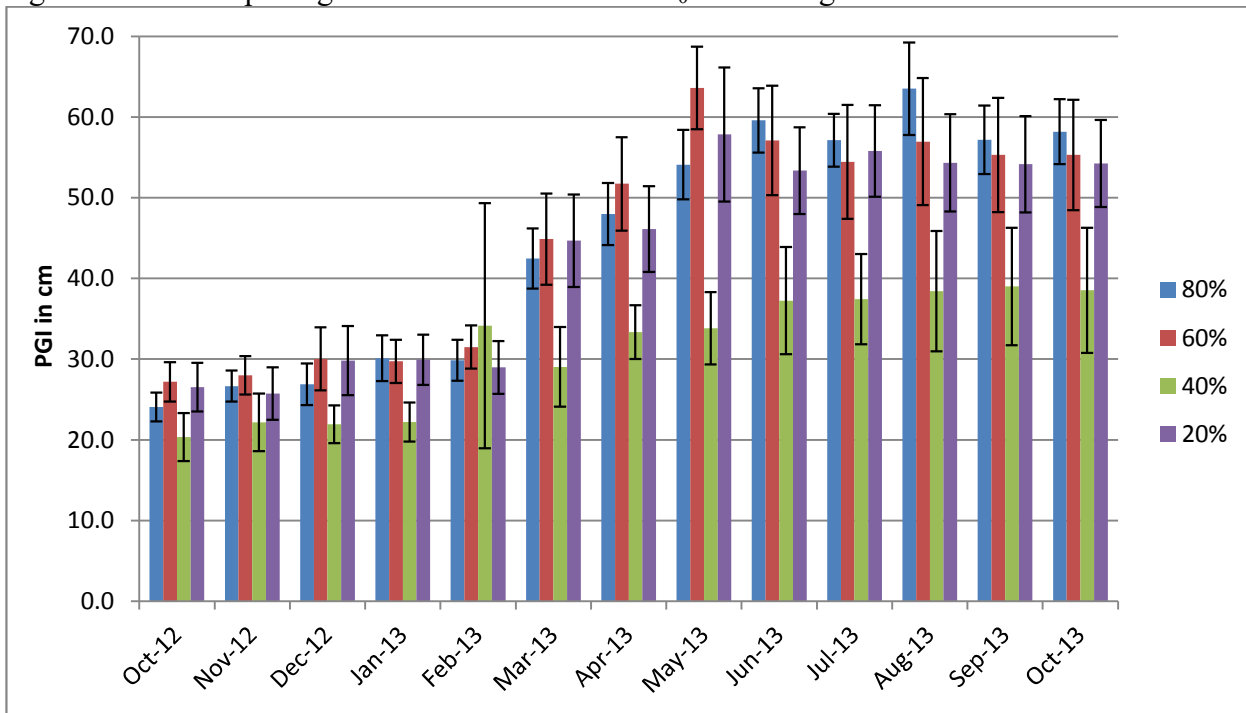


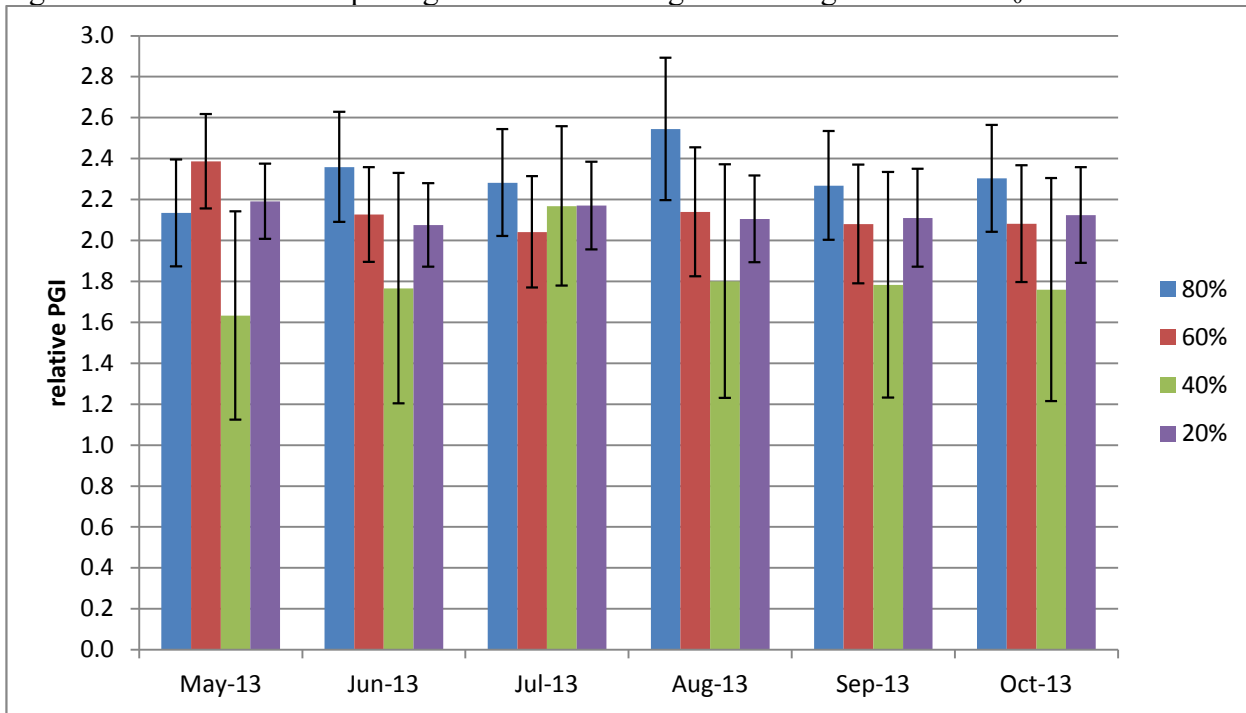
Cerastium tomentosum

Figure 22a . Mean plant growth index in cm on 4 ET₀-based irrigation levels



Error bars represent \pm 1 SE

Figure 22b . Mean relative plant growth index during deficit irrigation on 4 ET₀-based levels



Error bars represent \pm 1 SE

Table 10. Mean quality ratings in 6 categories on 4 ET₀-based irrigation levels

<i>Cerastium tomentosum</i>														
foliage		NOV	DEC	JAN	FEB	MAR	APR	MAY	JUN	JUL	AUG	SEP	OCT	AVG
	80%	3.5	3.6	2.9	3.4	4.6	4.8	4.6	4.4	2.9	3.1	2.8	3.3	3.6
	60%	3.8	3.8	2.8	2.8	4.0	4.8	4.4	4.0	3.0	2.6	2.6	3.2	3.5
	40%	3.8	3.0	2.5	3.3	4.2	4.3	4.5	3.3	2.3	2.8	3.0	3.3	3.3
	20%	3.7	4.0	3.0	3.2	4.8	4.3	4.3	4.3	3.0	2.7	3.0	3.8	3.7
flowering														
	80%					5.0	1.6	1.0						2.5
	60%	2.0					1.3	1.0						1.4
	40%	3.0	3.0			5.0	1.0	1.0						2.6
	20%						1.2	1.0						1.1
pest tolerance														
	80%	5.0	5.0	5.0	5.0	5.0	5.0	5.0	5.0	5.0	5.0	5.0	5.0	5.0
	60%	5.0	5.0	5.0	5.0	5.0	5.0	5.0	5.0	5.0	5.0	5.0	5.0	5.0
	40%	4.8	4.8	5.0	5.0	5.0	5.0	5.0	5.0	5.0	5.0	5.0	5.0	5.0
	20%	5.0	5.0	5.0	5.0	5.0	4.8	5.0	5.0	5.0	5.0	5.0	5.0	5.0
disease resistance														
	80%	3.5	4.0	4.8	5.0	5.0	5.0	5.0	4.8	4.4	3.5	4.4	4.3	4.5
	60%	4.0	4.2	4.8	5.0	5.0	5.0	5.0	5.0	4.0	3.0	4.2	3.6	4.4
	40%	4.4	3.6	5.0	5.0	5.0	5.0	5.0	4.8	5.0	2.8	3.8	4.3	4.5
	20%	4.0	4.3	4.7	5.0	5.0	4.7	5.0	5.0	4.3	2.8	3.7	4.5	4.4
vigor														
	80%	3.6	4.3	3.9	4.1	4.5	4.5	4.4	4.6	4.4	4.3	4.1	4.1	4.2
	60%	4.2	4.2	4.0	3.6	3.8	4.2	4.2	4.2	4.3	3.4	3.4	3.8	3.9
	40%	3.2	3.8	3.3	3.3	3.8	3.5	4.0	3.5	3.8	3.8	3.3	3.3	3.5
	20%	3.5	4.0	3.5	3.5	4.2	4.5	3.8	4.3	4.2	4.3	4.0	3.7	4.0
overall appearance														
	80%	3.1	3.4	2.8	3.1	4.0	4.1	3.6	3.6	2.5	2.5	2.3	2.3	3.1
	60%	3.6	3.6	2.6	2.8	3.4	3.6	3.5	3.4	2.3	2.4	2.4	2.4	3.0
	40%	3.0	3.3	2.3	3.0	3.8	3.3	3.5	2.8	1.8	2.5	2.3	2.3	2.8
	20%	3.2	3.7	2.7	2.9	4.0	3.8	3.2	3.3	2.3	2.4	2.4	2.8	3.1

Table 11. Master Gardener average annual quality ratings and 2-year growth for *Cerastium tomentosum*

COUNTY	San					
	Alameda	Orange	Joaquin	SD coastal	Shasta	Ventura
Sunset Zone	9	23	14	24	9	21
foliage	3.6	2.4	3.4	3.7	3.6	1.3
flowering	2.0	1.0	2.5		4.5	1.0
bloom period	Apr-May	Aug	Mar/Jul		Mar-Apr	Jan-Apr
pest tolerance	5.0	4.3	5.0	4.8	4.9	5.0
disease resistance	5.0	4.9	5.0	5.0	5.0	5.0
vigor	3.3	2.3	3.4	3.5	3.5	1.5
overall appearance	3.1	2.2	3.4	3.2	3.4	1.0
MSMTS						
relative PGI	0.9	0.5	0.8	2.1	2.4	0.8
avg ht (cm)	4	5	6	25	17	7
avg wd (cm)	31	13	27	72	52	25
AVG HT (in)	1	2	2	10	7	3
AVG WD (in)	12	5	10	28	21	10