

2015 TABLES & FIGURES

NOTE: In this entire section, lower case letter superscripts are only used for ratings categories that showed significant differences between treatments. Recommended rate(s) are in bold print.

Table 5. Average Monthly Quality Ratings for *Dianella caerulea* ‘Cassa Blue’™ in 2015 on 4 ET₀-based irrigation levels.

	Apr-15	May-15	Jun-15	Jul-15	Aug-15	Sep-15	Oct-15	AVG
Foliage								
80%	4.0	4.0	4.0	3.7	3.8	3.8	3.7	3.9
60%	3.5	3.5	3.3	3.7	3.7	3.8	3.7	3.6
40%	3.8	4.0	4.0	4.0	3.8	3.8	4.5	4.0
20%	3.8	3.8	3.5	3.3	3.7	3.3	3.7	3.6
Flowering								
80%	2.6	2.0	1.2	1.0				1.8
60%	4.0	2.5	1.6	1.0			1.0	1.9
40%	3.8	2.3	1.4	1.0				1.9
20%	3.1	1.0	1.3				3.0	1.9
Pest Tolerance								
80%	5.0	5.0	5.0	5.0	5.0	5.0	5.0	5.0
60%	5.0	5.0	5.0	5.0	5.0	5.0	5.0	5.0
40%	5.0	5.0	5.0	5.0	5.0	5.0	5.0	5.0
20%	5.0	5.0	5.0	5.0	5.0	5.0	5.0	5.0
Disease Resistance								
80%	5.0	4.8	5.0	5.0	5.0	5.0	5.0	5.0
60%	5.0	5.0	5.0	4.5	5.0	4.8	5.0	4.8
40%	5.0	5.0	5.0	5.0	5.0	5.0	5.0	5.0
20%	5.0	5.0	5.0	5.0	5.0	4.7	4.5	4.8
Vigor								
80%	4.0	3.5	4.0	4.2	4.0	4.0	3.8	3.7
60%	4.7	3.8	3.8	4.3	4.7	4.8	4.0	4.0
40%	4.0	3.8	3.8	4.2	4.5	4.3	4.0	3.8
20%	4.3	4.0	3.7	3.5	3.5	3.5	3.3	3.6
Overall Appearance								
80%	4.3	3.6	3.9	3.8	3.7	3.8	3.8	3.8 ^a
60%	4.3	3.8	3.8	3.7	3.8	3.8	3.7	3.8 ^a
40%	4.3	3.7	4.2	3.8	4.0	3.7	4.5	4.0^a
20%	3.9	3.3	3.5	3.3	3.3	3.3	3.2	3.3 ^b

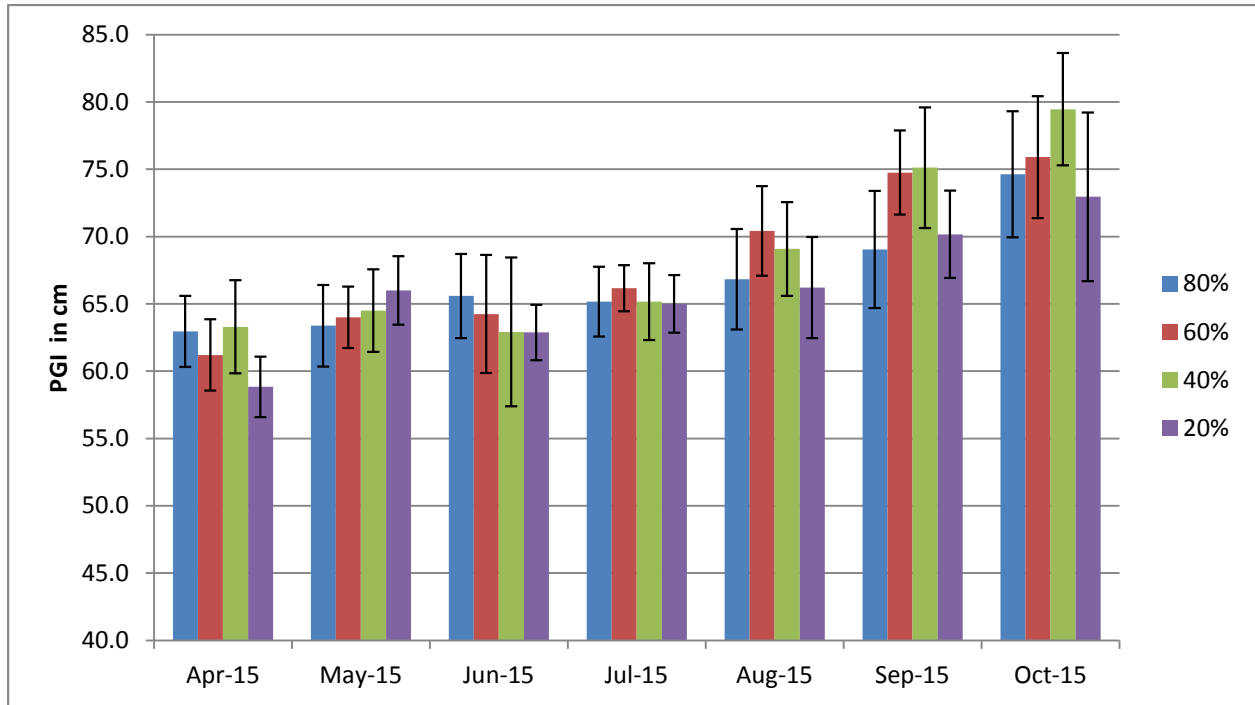


Figure 14a. Average monthly plant growth index of *Dianella caerulea* ‘Cassa Blue’™ in 2015 on 4 ET_o-based irrigation levels. Bars represent ± 1 SE. No significant differences using ANOVA and Tukey’s HSD.

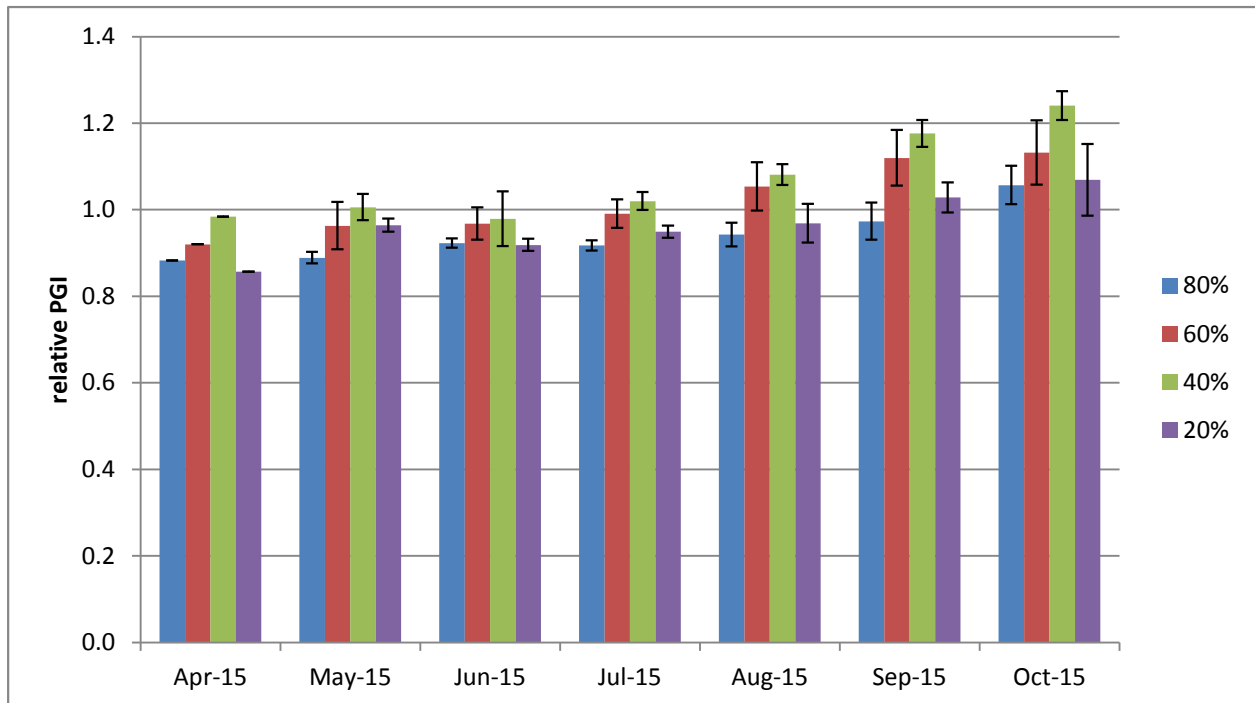


Figure 14b. Average monthly relative plant growth index of *Dianella caerulea* ‘Cassa Blue’™ in 2015 on 4 ET_o-based irrigation levels. Bars represent ± 1 SE. No significant differences using ANOVA and Tukey’s HSD.