

2015 TABLES & FIGURES

Table 9. Average monthly quality ratings for *Rhus ovata* in 2015 on 4 ET₀-based irrigation treatments.

	Apr-15	May-15	Jun-15	Jul-15	Aug-15	Sep-15	Oct-15	AVG
Foliage								
80%	3.8	3.9	3.8	4.0	4.0	3.5	4.3	3.9 ^c
60%	4.6	4.4	4.8	4.8	4.0	4.0	3.8	4.3 ^b
40%	4.7	4.7	5.0	4.7	5.0	4.3	4.3	4.7a ^a
20%	4.0	4.3	4.5	4.8	4.8	4.0	4.5	4.4 ^{ab}
Flowering								
80%								
60%				3.0				3.0
40%								
20%			3.0					3.0
Pest Tolerance								
80%	5.0	5.0	5.0	5.0	5.0	5.0	5.0	5.0
60%	5.0	5.0	5.0	5.0	5.0	5.0	5.0	5.0
40%	5.0	5.0	5.0	5.0	5.0	5.0	5.0	5.0
20%	5.0	5.0	5.0	5.0	5.0	5.0	5.0	5.0
Disease Resistance								
80%	4.5	4.3	4.3	4.5	4.0	4.0	4.0	4.2
60%	5.0	4.8	5.0	4.8	4.8	4.0	3.8	4.6
40%	5.0	5.0	5.0	5.0	5.0	4.3	4.3	4.8
20%	4.5	4.5	5.0	4.8	4.8	4.0	4.5	4.6
Vigor								
80%	3.5	3.5	4.0	3.8	3.3	2.8	3.3	3.4
60%	4.5	4.0	4.8	5.0	4.5	4.5	4.3	4.5
40%	4.7	4.3	4.7	5.0	5.0	5.0	4.7	4.8
20%	4.0	4.0	4.3	4.3	4.5	4.0	5.0	4.3
Overall Appearance								
80%	3.0	3.3	3.3	3.3	2.8	2.3	3.0	3.0 ^c
60%	3.8	4.0	4.0	4.0	3.8	3.4	3.0	3.7 ^b
40%	4.0	4.2	4.3	4.0	4.5	4.0	4.2	4.2 ^a
20%	3.3	3.9	3.9	3.9	4.0	3.7	5.0	3.9 ^{ab}

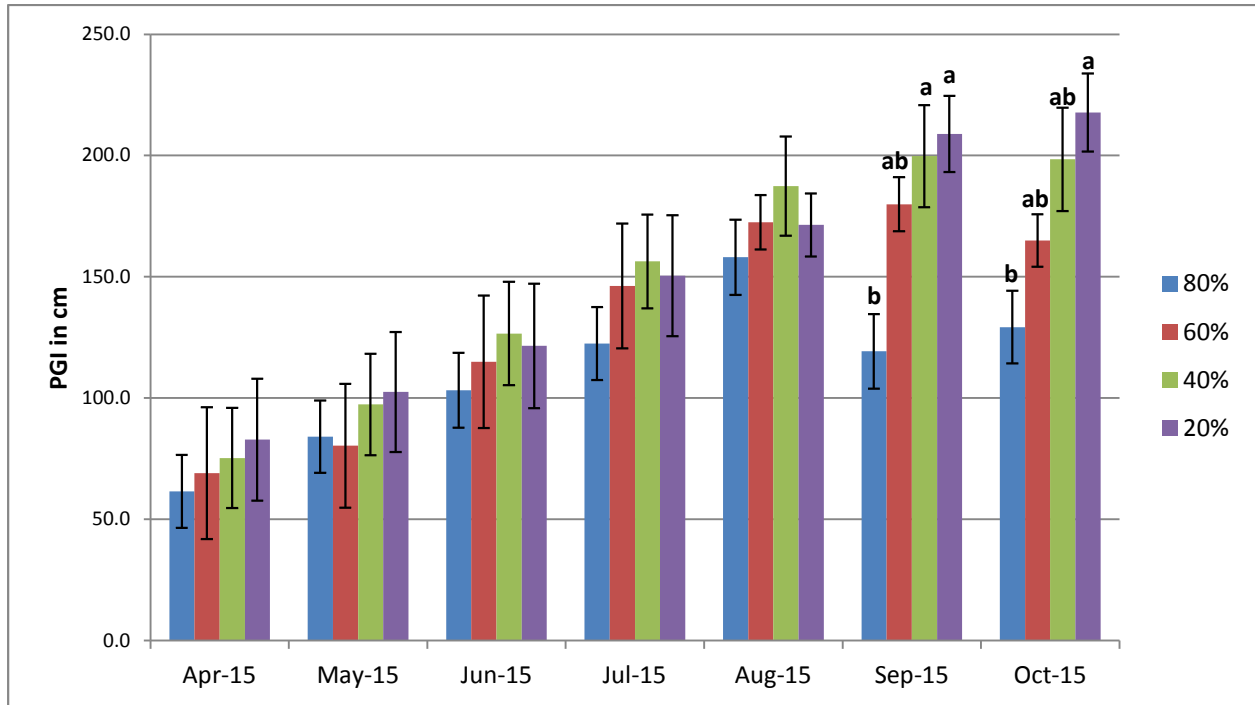


Figure 17a. Monthly average quality ratings for *Rhus ovata* in 2015 on 4 ET₀-based irrigation treatments. Bars represent ± 1 SE. Lower case letters indicate significant differences at p ≤ 0.01 using ANOVA and Tukey's HSD.

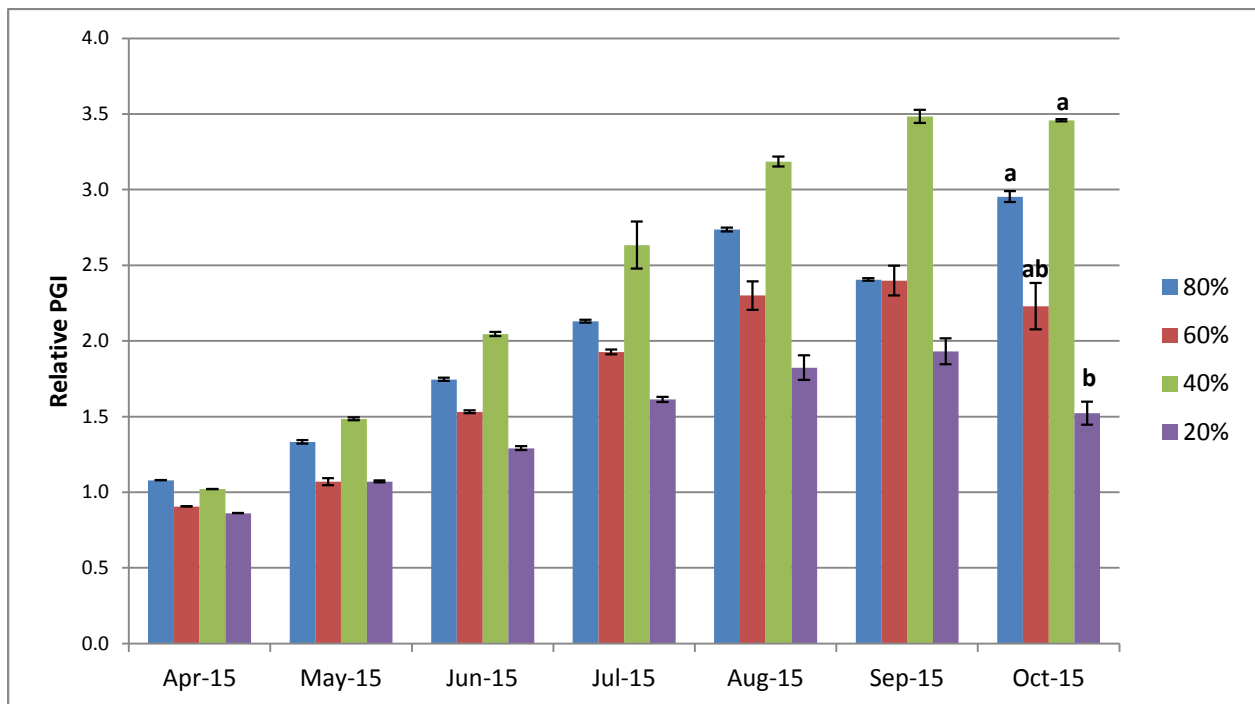


Figure 17b. Monthly average relative plant growth index for *Rhus ovata* in 2015 on 4 ET₀-based irrigation treatments. Bars represent ± 1 SE. Significant differences only in October between treatments 80% and 20% at p ≤ 0.5, and between 40% and 20% at p ≤ 0.1 using ANOVA and Tukey's HSD.