

2015 TABLES & FIGURES

Table 12. Average monthly quality ratings for *Solanum xanti* ‘Mountain Pride’ in 2015 on 4 ET₀-based irrigation levels.

	Apr-15	May-15	Jun-15	Jul-15	Aug-15	Sep-15	Oct-15	AVG
Foliage								
80%	2.8	3.2	3.5	4.0	2.5	2.3	3.3	3.1 ^b
60%	3.9	3.8	3.4	2.6	2.2	1.8	2.8	2.9 ^b
40%	3.5	4.0	3.3	3.7	3.3	2.7	3.7	3.5 ^a
20%	3.3	3.2	3.0	3.3	2.3	2.3	2.3	2.8 ^b
Flowering								
80%	1.8	3.0	3.0	4.0	2.5	2.5	3.5	2.9 ^b
60%	2.6	3.0	5.0	2.7	1.0			2.9 ^b
40%	1.0	3.3	3.0	2.3	2.3	3.0	1.0	2.3 ^b
20%	2.3	4.5	4.5	4.0	5.0	2.5	5.0	4.0 ^a
Pest Tolerance								
80%	5.0	5.0	5.0	5.0	5.0	2.8	4.0	4.5
60%	5.0	5.0	5.0	5.0	4.6	2.0	4.3	4.4
40%	5.0	5.0	5.0	5.0	5.0	2.7	5.0	4.7
20%	5.0	5.0	5.0	5.0	3.5	2.5	3.8	4.3
Disease Resistance								
80%	4.4	5.0	4.0	4.0	5.0	5.0	3.7	4.4
60%	5.0	4.4	4.0	4.6	5.0	5.0	4.5	4.6
40%	4.0	4.3	5.0	3.7	5.0	5.0	4.3	4.5
20%	4.3	5.0	5.0	3.5	4.5	5.0	4.0	4.5
Vigor								
80%	2.2	2.6	3.0	4.0	2.5	3.3	3.7	3.0
60%	3.7	3.2	4.2	3.0	2.6	2.3	2.5	3.1
40%	2.7	3.3	3.3	3.3	3.3	3.3	3.7	3.3
20%	2.8	3.8	3.3	3.5	3.0	2.8	2.5	3.1
Overall Appearance								
80%	2.6	2.8	3.0	3.3	2.5	2.3	3.3	2.8 ^{ab}
60%	3.6	3.2	3.1	2.4	2.0	1.8	2.0	2.6 ^{ab}
40%	3.0	4.0	2.8	3.0	3.0	3.0	3.3	3.2 ^a
20%	2.5	3.0	2.8	2.5	2.0	2.0	2.3	2.4 ^b

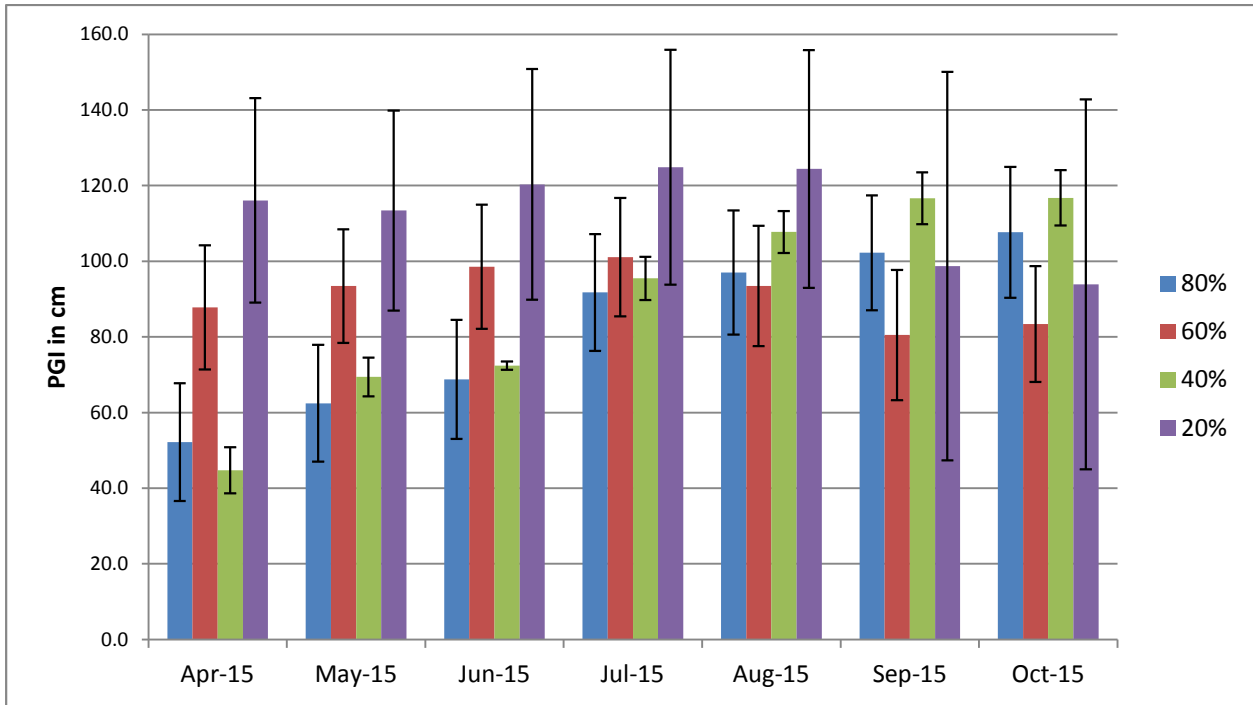


Figure 20a. Average monthly plant growth index for *Solanum xanti* ‘Mountain Pride’ in 2015 on 4 ET₀-based irrigation levels. Bars represent ±1 SE. For all treatments n=3. No significant differences between treatments using ANOVA and Tukey’s HSD.

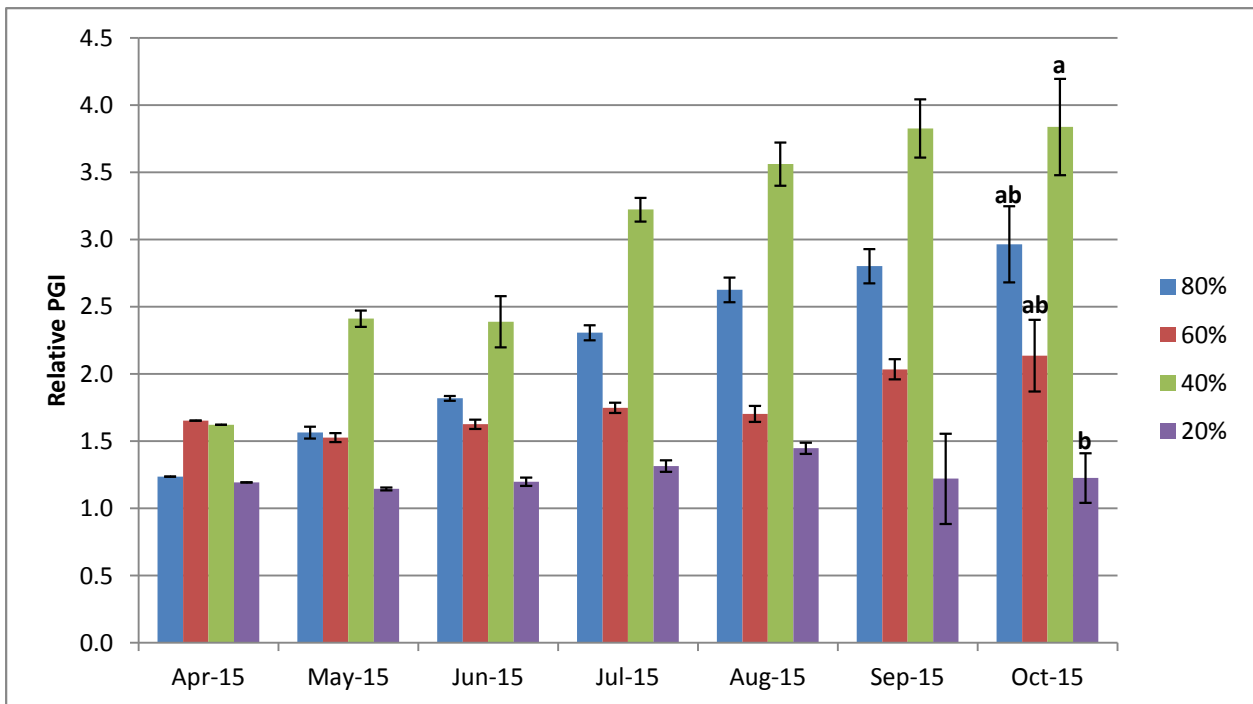


Figure 20b. Average monthly relative plant growth index for *Solanum xanti* ‘Mountain Pride’ in 2015 on 4 ET₀-based irrigation levels. Bars represent ±1 SE. For all treatments n=3. 40% treatment was significantly greater than 20% at p≤0.01 using ANOVA and Tukey’s HSD.