

2015 TABLES & FIGURES

SHADE SPECIES

Table 13. Average monthly quality ratings for *Correa pulchella* ‘Pink Eyre’ in 2015 on 4 ET₀-based irrigation levels

	Apr-15	May-15	Jun-15	Jul-15	Aug-15	Sep-15	Oct-15	AVG
Foliage								
80%	5.0	5.0	5.0	5.0	5.0	4.8	5.0	5.0
60%	4.8	4.8	4.8	4.8	4.8	4.7	4.8	4.8
40%	5.0	4.8	5.0	5.0	4.8	5.0	5.0	5.0
20%	5.0	4.8	5.0	5.0	4.8	5.0	5.0	5.0
Pest Tolerance								
80%	5	5	5	5	5	5	5	5.0
60%	5	5	5	5	5	5	5	5.0
40%	5	5	5	5	5	5	5	5.0
20%	5	5	5	5	5	5	5	5.0
Disease Resistance								
80%	5	5	5	5	5	5	5	5.0
60%	5	5	5	5	5	5	5	5.0
40%	5	5	5	5	5	5	5	5.0
20%	5	5	5	5	5	5	5	5.0
Vigor								
80%	3.8	3.9	4.5	4.2	3.8	4.0	4.0	4.0
60%	4.6	4.2	4.5	4.5	4.2	4.3	4.3	4.4
40%	4.5	4.4	4.5	4.5	4.0	4.6	4.7	4.5
20%	4.6	4.4	4.4	4.8	3.9	4.3	4.3	4.4
Overall Appearance								
80%	4.4	3.8	4.3	4.1	3.8	4.2	4.0	4.1
60%	4.5	4.2	4.2	4.3	4.0	4.0	4.4	4.2
40%	4.6	4.0	4.2	4.2	3.8	4.2	4.0	4.1
20%	4.6	4.0	4.3	4.1	3.8	4.2	4.0	4.1

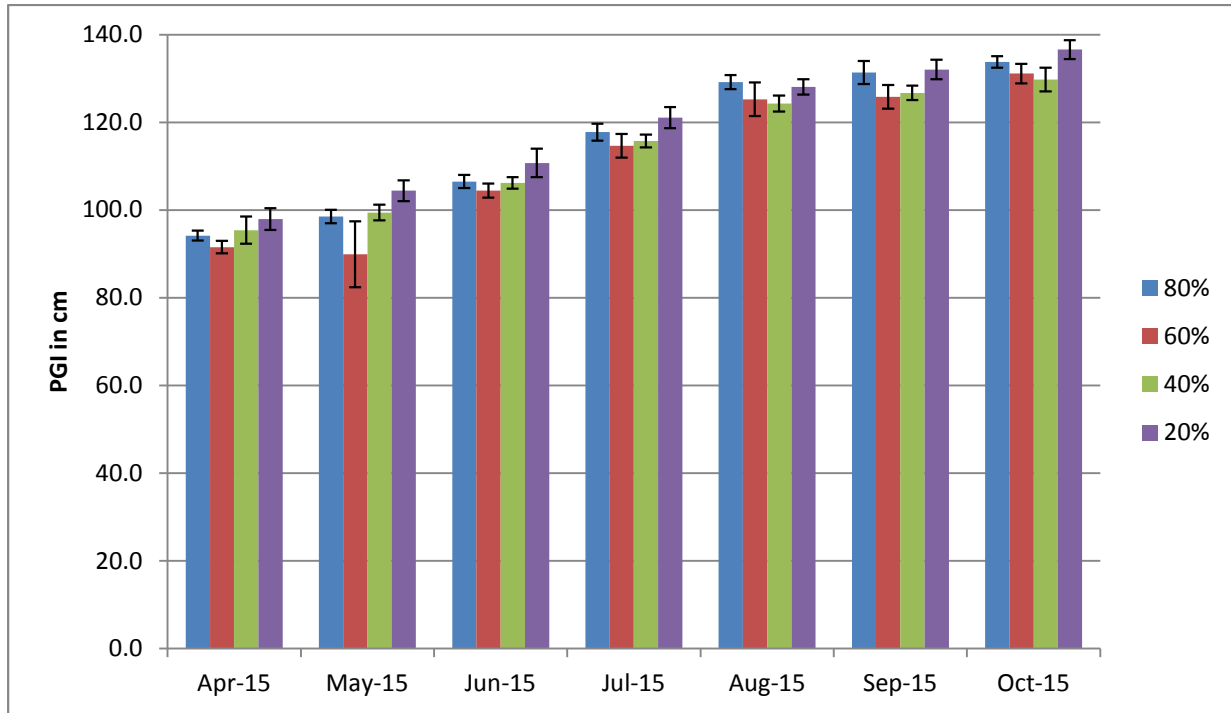


Figure 21a. Average monthly plant growth index for *Correa pulchella* ‘Pink Eyre’ in 2015 on 4 ET₀-based irrigation levels. Bars represent ±1 SE. No significant differences using ANOVA and Tukey’s HSD.

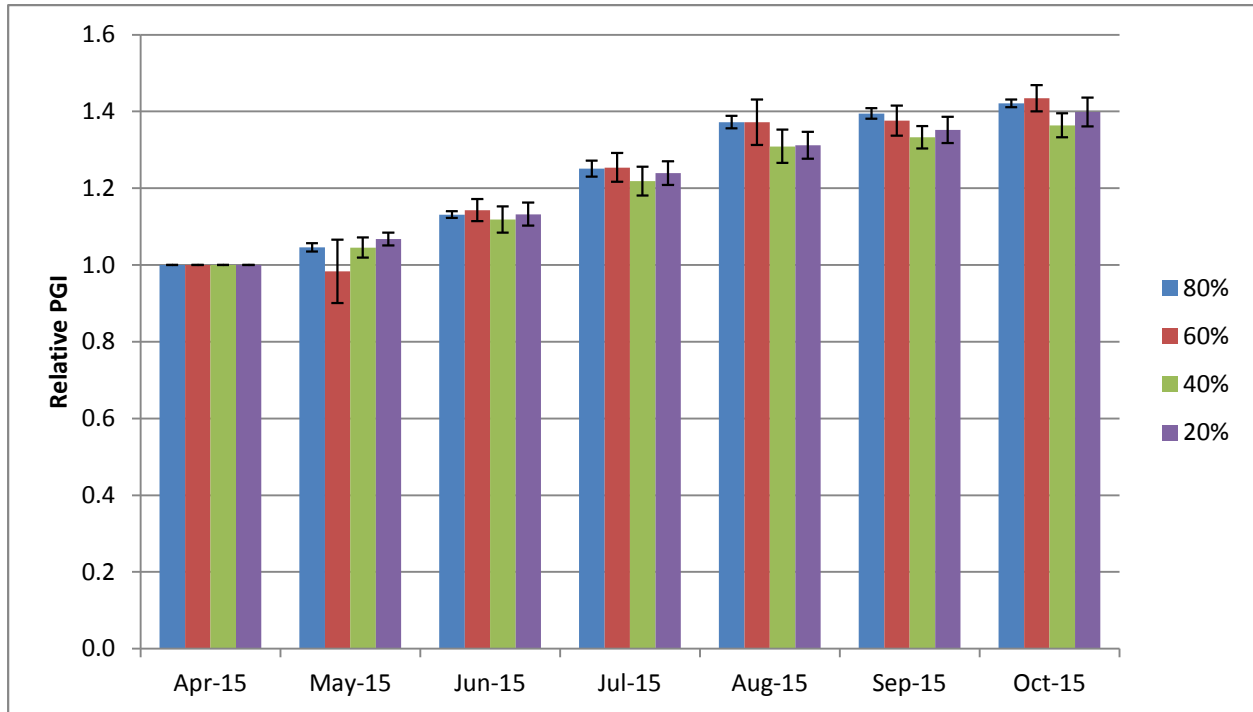


Figure 21b. Average monthly relative plant growth index for *Correa pulchella* ‘Pink Eyre’ in 2015 on 4 ET₀-based irrigation levels. Bars represent ±1 SE. No significant differences using ANOVA and Tukey’s HSD.